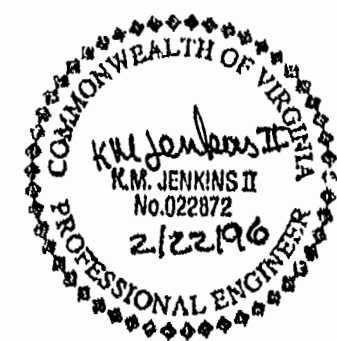
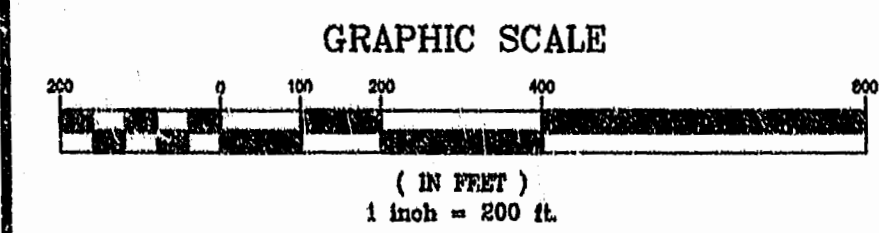
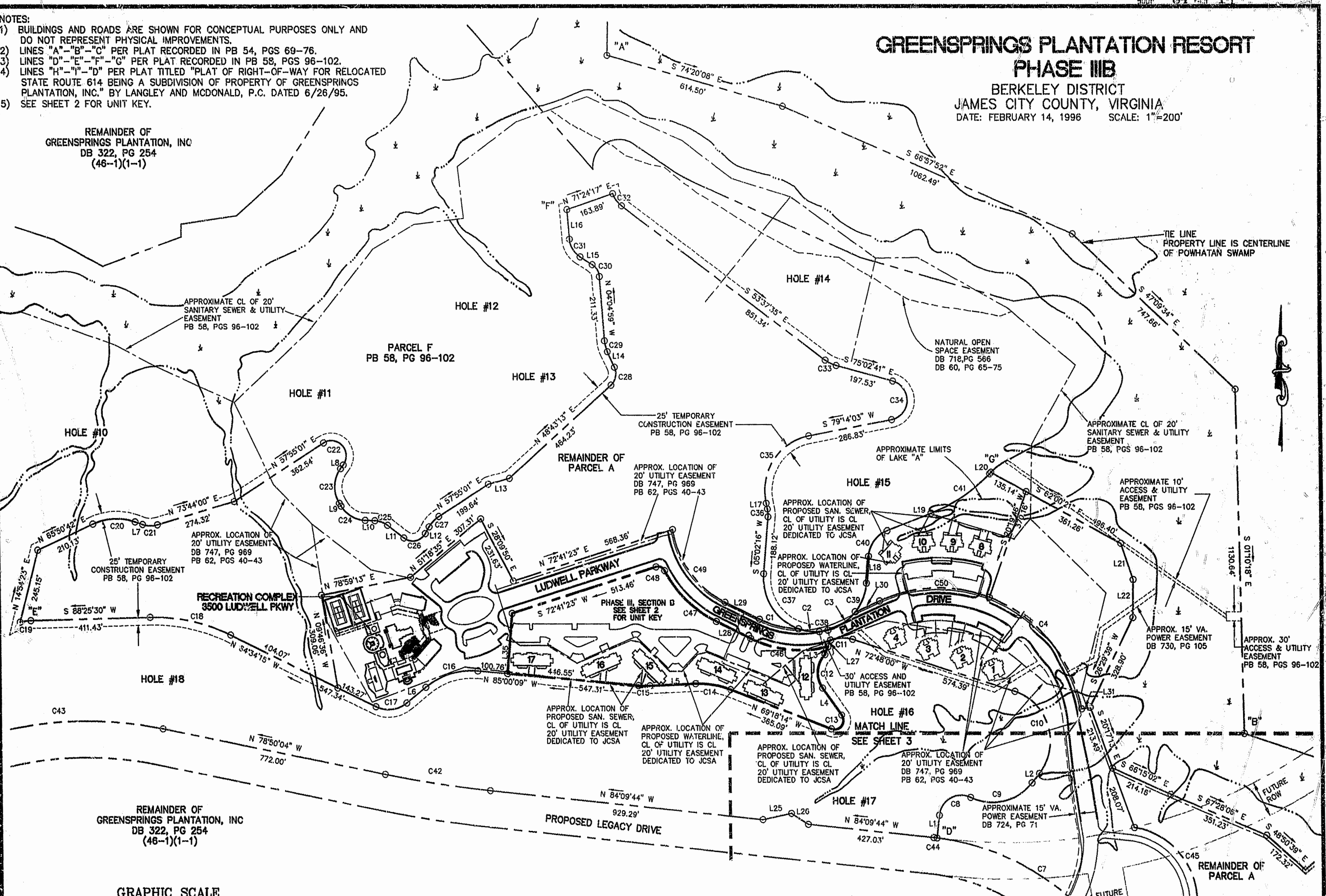


GREENSPRINGS PLANTATION RESORT PHASE III B

BERKELEY DISTRICT
JAMES CITY COUNTY, VIRGINIA
DATE: FEBRUARY 14, 1996 SCALE: 1"=200'

- NOTES:
- 1) BUILDINGS AND ROADS ARE SHOWN FOR CONCEPTUAL PURPOSES ONLY AND DO NOT REPRESENT PHYSICAL IMPROVEMENTS.
 - 2) LINES "A"-"B"-"C" PER PLAT RECORDED IN PB 54, PGS 69-76.
 - 3) LINES "D"-"E"-"F"-"G" PER PLAT RECORDED IN PB 58, PGS 96-102.
 - 4) LINES "H"-"I"-"J"-"K" PER PLAT TITLED "PLAT OF RIGHT-OF-WAY FOR RELOCATED STATE ROUTE 614 BEING A SUBDIVISION OF PROPERTY OF GREENSPRINGS PLANTATION, INC." BY LANGLEY AND MCDONALD, P.C. DATED 6/26/95.
 - 5) SEE SHEET 2 FOR UNIT KEY.

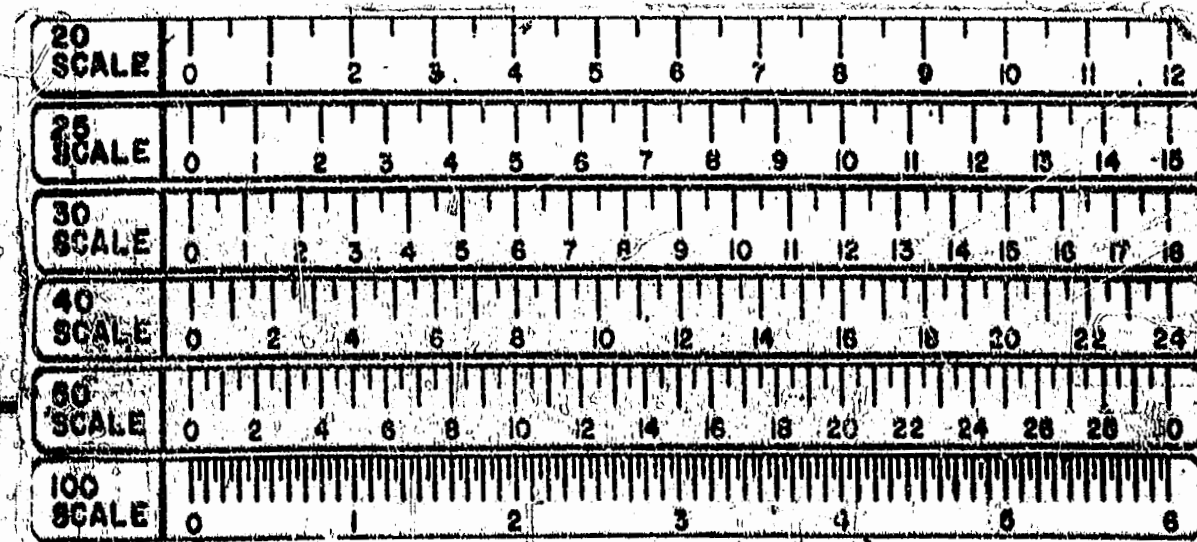
REMAINDER OF
GREENSPRINGS PLANTATION, INC
DB 322, PG 254
(46-1)(1-1)



Rickmond Engineering, Inc.

1643-C Merrimac Trail
Williamsburg VA 23185
(804)229-1776 or 898-4149

Civil Engineering
Environmental Engineering
Land Surveying



APPROX 15' VA. POWER EASEMENT DB 724, PG 71

CHESAPEAKE & POTOMAC TELEPHONE CO. EASEMENT DB 730, PG 789

RECORDED

Recorded, 1 day of May 1996

D.B. No. 785 in DB 322

[Signature]

SHEET 4 OF 4

96109.DWG