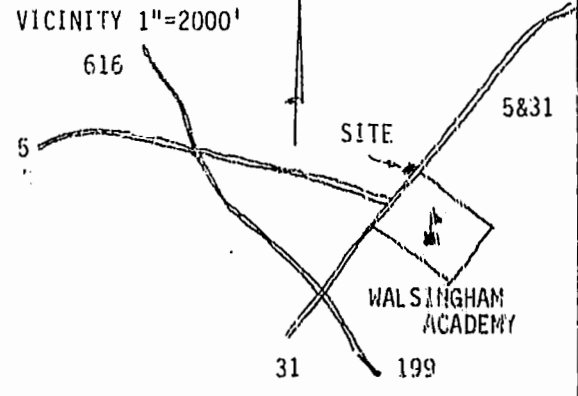
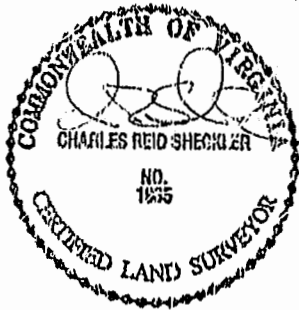
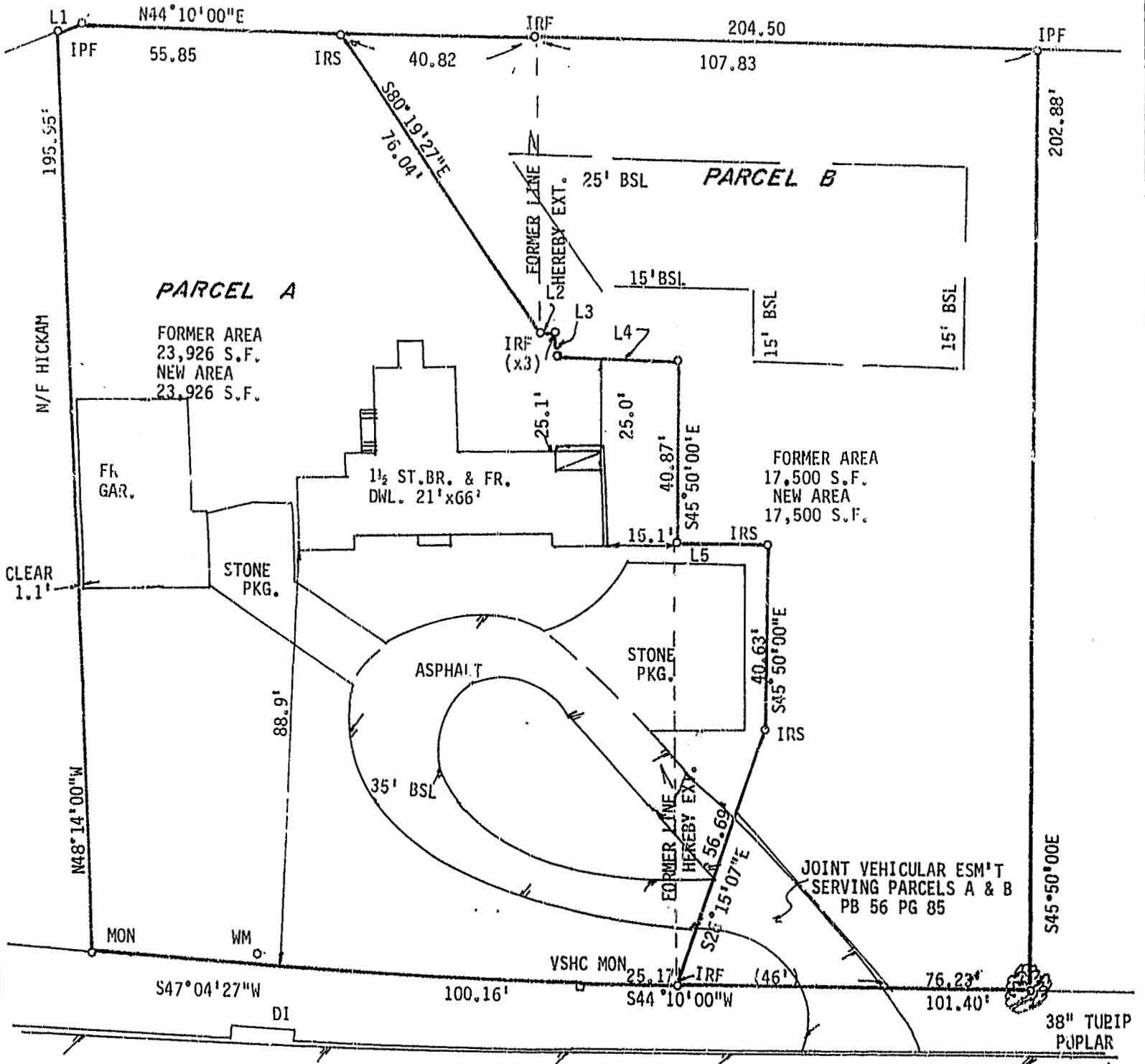


LINE TABLE

L1	N22°41'00"E, 5.52'
L2	N44°10'00"E, 3.19'
L3	S45°50'00"E, 5.30'
L4	N44°10'00"E, 26.17'
L5	N44°10'00"E, 19.00'



N/F STEELE



JAMESTOWN ROAD SR 5 & 31 VAR R/W

DB 75, PG 221
REF. DB 87, PG 345
PB 56, PG 85

THE WOODSON COMPANY SURVEYING & MAPPING 5251-18 JOHN TYLER HIGHWAY #359, WILLIAMSBURG, VIRGINIA 23185 1-800-308-6443

BOUNDARY LINE ADJUSTMENT
PARCELS A & B, HIRZ SUBDIVISION
CITY OF WILLIAMSBURG, VIRGINIA

10:36 AM
Recorded 29th day of March, 1996
in
D.B. No. 118 pages 377
Delaware Clerk

SCALE 1"=25'

MARCH 19, 1996

JO 5002-3

REV 3/21/96 CITY COMMENTS

SHEET 1 of 2

