

LOT CURVE DATA

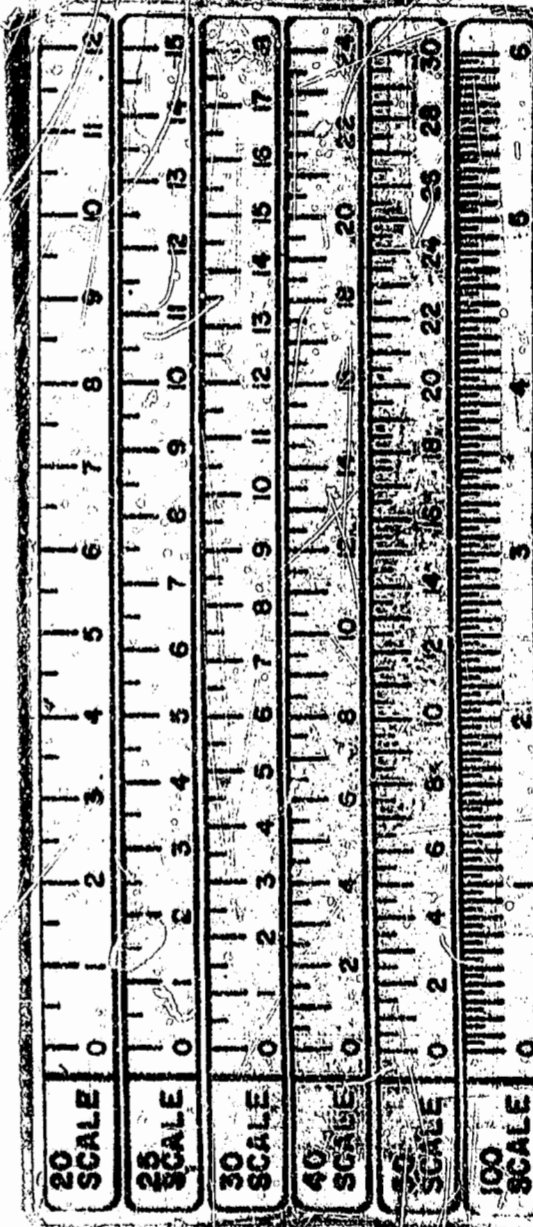
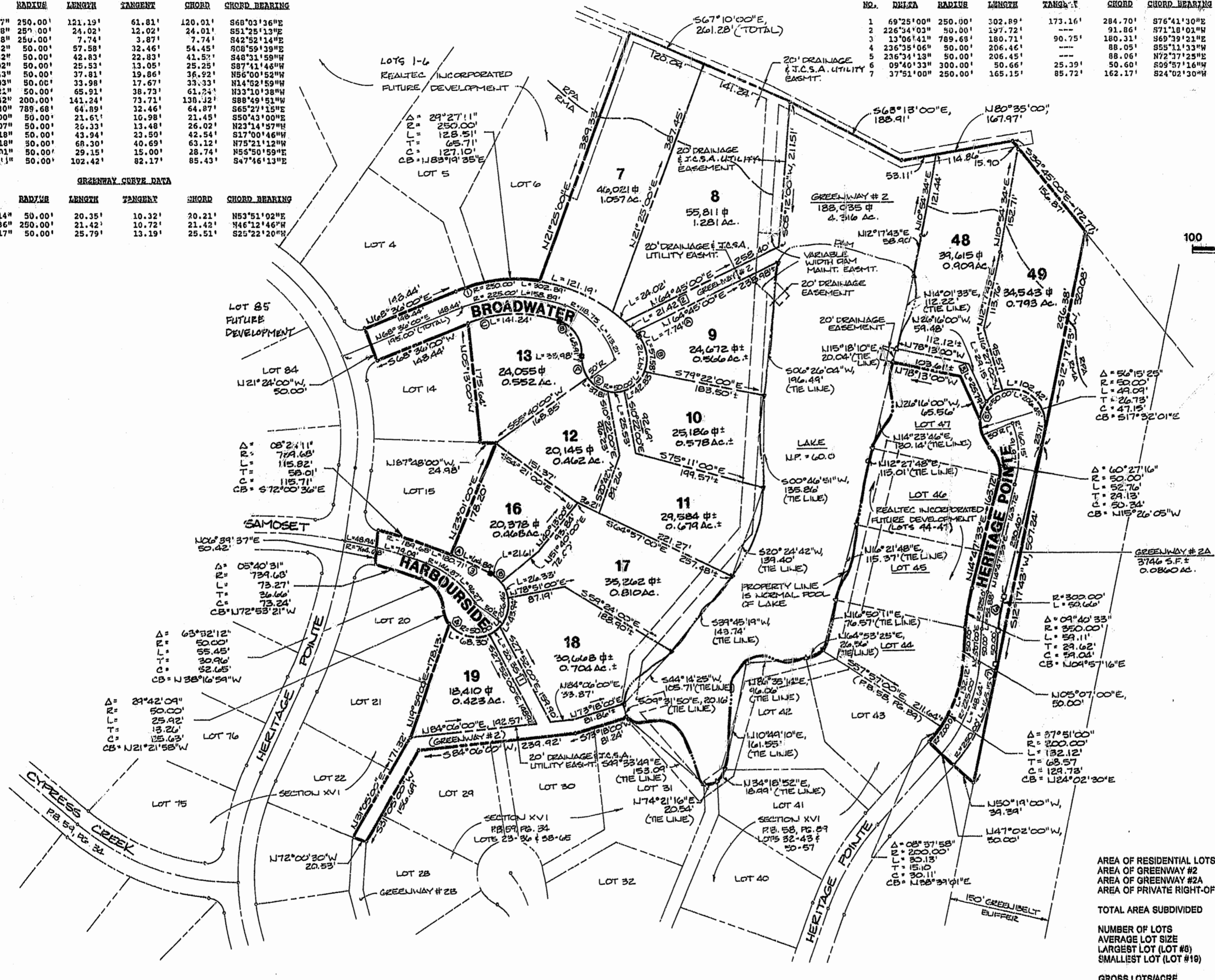
LOT NO.	DELTA	RADIUS	LENGTH	TANGENT	CHORD	CHORD BEARING
7	27°46'27"	250.00'	121.19'	61.81'	120.01'	S68°03'36"E
8	05°30'18"	250.00'	24.02'	12.02'	24.01'	S51°25'13"E
9A	01°46'28"	250.00'	7.74'	3.87'	7.74'	S42°52'14"E
9B	65°58'42"	50.00'	57.58'	32.46'	54.45'	S08°59'39"E
10	49°04'32"	50.00'	42.83'	22.83'	41.52'	S48°31'59"W
11	29°15'02"	50.00'	25.53'	13.05'	25.25'	S87°41'46"W
12	43°19'43"	50.00'	37.81'	19.86'	36.92'	N56°00'52"W
13A	38°56'03"	50.00'	33.98'	17.67'	33.33'	N14°52'59"W
13B	75°31'23"	50.00'	65.91'	38.73'	61.24'	N33°10'38"W
13C	40°27'42"	200.00'	141.24'	73.71'	138.12'	S88°49'51"W
16A	04°42'30"	789.68'	64.89'	32.46'	64.87'	S65°27'15"E
16B	24°45'00"	50.00'	21.61'	10.98'	21.45'	S50°43'00"E
17	30°10'07"	50.00'	26.33'	13.48'	26.02'	N23°14'57"W
18	50°21'18"	50.00'	43.94'	23.50'	42.54'	S17°00'46"W
19	78°16'18"	50.00'	68.30'	40.69'	63.12'	N75°21'12"W
48	33°24'01"	50.00'	29.15'	15.00'	28.74'	N55°50'59"E
49	11°7'21"	50.00'	102.42'	82.17'	85.43'	S47°16'13"E

GREENWAY CURVE DATA

NO.	DELTA	RADIUS	LENGTH	TANGENT	CHORD	CHORD BEARING
1	23°19'14"	50.00'	20.35'	10.32'	20.21'	N53°51'02"E
2	04°54'36"	250.00'	21.42'	10.72'	21.42'	N46°12'46"W
3	29°33'17"	50.00'	25.79'	13.19'	25.51'	S25°22'20"W

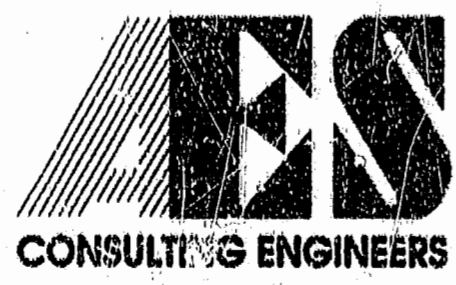
RIGHT-OF-WAY CURVE DATA

NO.	DELTA	RADIUS	LENGTH	TANGENT	CHORD	CHORD BEARING
1	69°25'00"	250.00'	302.89'	173.16'	284.70'	S76°41'30"E
2	226°34'03"	50.00'	197.72'	---	91.86'	S71°18'01"W
3	13°06'41"	789.68'	180.71'	90.75'	180.31'	S69°19'21"E
4	236°35'06"	50.00'	206.46'	---	88.05'	S55°11'33"W
5	236°34'13"	50.00'	206.45'	---	88.06'	N72°17'25"E
6	09°40'33"	300.00'	50.66'	25.39'	50.60'	S09°57'16"W
7	37°51'00"	250.00'	165.15'	85.72'	162.17'	S24°02'30"W



AREA TABULATION

	S.F.	ACRES
AREA OF RESIDENTIAL LOTS	404,350	9.283
AREA OF GREENWAY #2	188,037	4.316
AREA OF GREENWAY #2A	3,746	0.086
AREA OF PRIVATE RIGHT-OF-WAYS	73,217	1.661
TOTAL AREA SUBDIVIDED	669,350	15.366
NUMBER OF LOTS	13	
AVERAGE LOT SIZE	31,104	0.694
LARGEST LOT (LOT #8)	50,092	1.150
SMALLEST LOT (LOT #19)	18,410	0.423
GROSS LOTS/ACRE		0.648 LOTS/ACRE



5248 Olde Towne Road, Suite 1  
 Williamsburg, Virginia 23188  
 (804) 253-0040  
 Fax (804) 220-8994

PLAT OF  
**FORD'S COLONY  
 AT WILLIAMSBURG**  
 SECTION XVI, LOTS 7-13, 16-19, AND 48 & 49  
 BERKELEY DISTRICT, JAMES CITY COUNTY, VIRGINIA



NO.	DATE	REVISION / COMMENT / NOTE	BY

Designed: MHDG/AES  
 Drawn: RMJ  
 Date: 11/13/96  
 Project No.: 5852  
 Drawing No.: 2 of 2