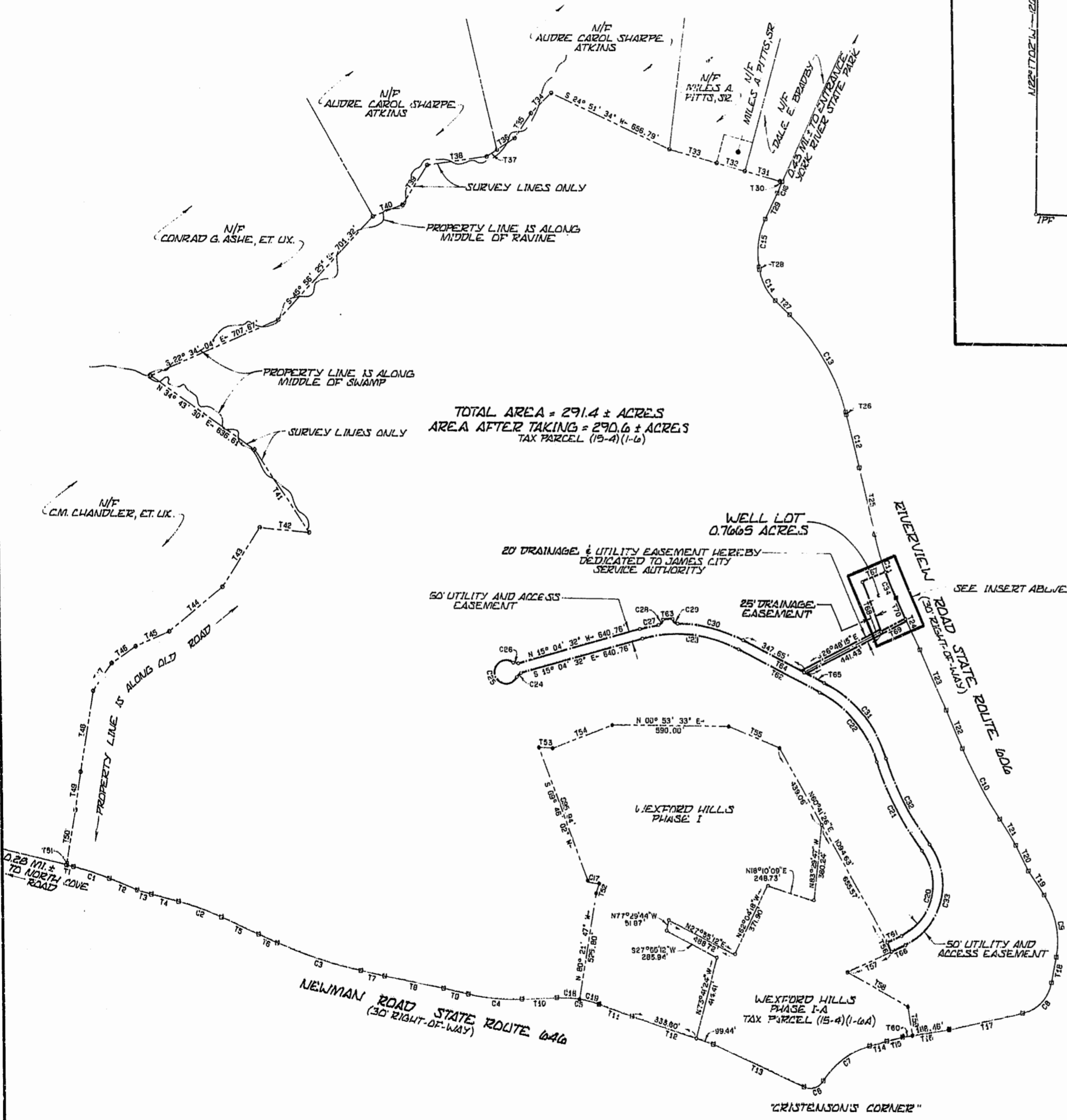


INSERT
1"=30'



TOTAL AREA = 291.4 ± ACRES
 AREA AFTER TAKING = 290.6 ± ACRES
 TAX PARCEL (15-A)(1-6)

20 SCALE	0 1 2 3 4 5 6 7 8 9 10 11 12
25 SCALE	0 1 2 3 4 5 6 7 8 9 10 11 12 13 14 15
30 SCALE	0 1 2 3 4 5 6 7 8 9 10 11 12 13 14 15 16 17 18
40 SCALE	0 2 4 6 8 10 12 14 16 18 20 22 24
50 SCALE	0 2 4 6 8 10 12 14 16 18 20 22 24 26 28 30
100 SCALE	0 1 2 3 4 5 6

GRAPHIC SCALE IN FEET
 1"=400'

PLAT OF
 WELL LOT
 WEXFORD HILLS
 BEING A SUBDIVISION OF
 WILKINSON TRACT
 JAMES CITY COUNTY, VIRGINIA
 DATE: MARCH 15, 1995 ~ SCALE: 1"=400'
 SHEET 2 OF 2

12:35 p.m.
 14th day of November, 1995
 PREPARED BY
 LANGLEY & McDONALD, P.C.
 ENGINEERS-PLANNERS-SURVEYORS
 LANDSCAPE ARCHITECTS & ENVIRONMENTAL CONSULTANTS
 VIRGINIA BEACH - WILLIAMSBURG, VIRGINIA
 D.B. No. 762 page 400
 Clerk