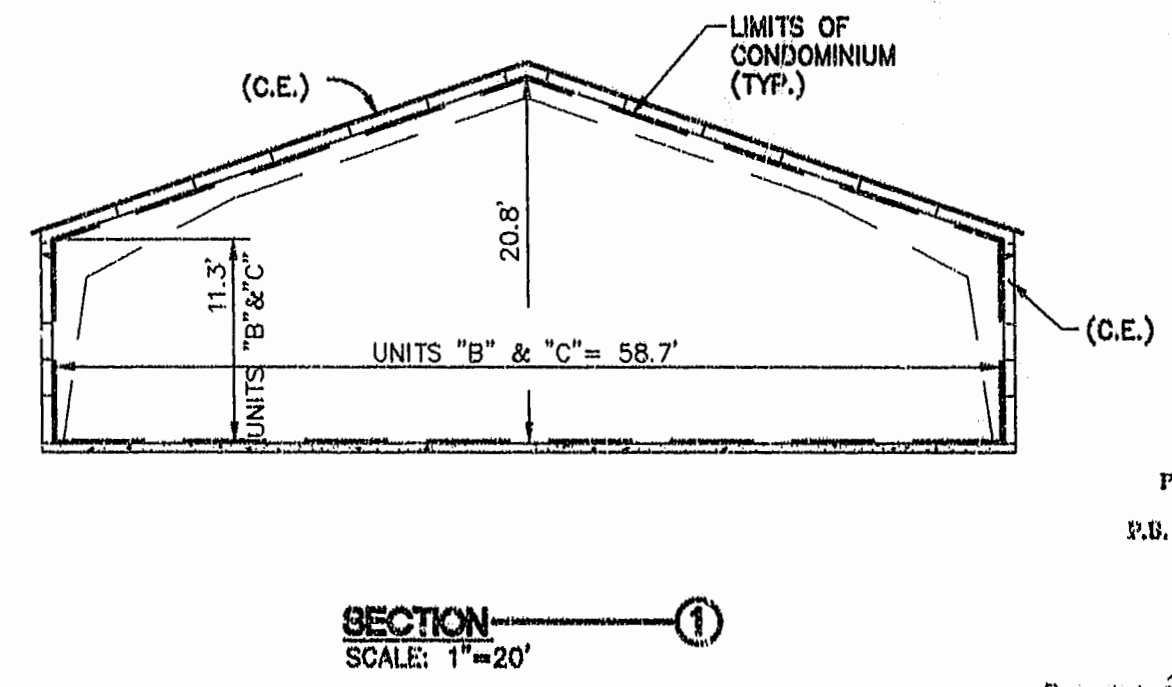
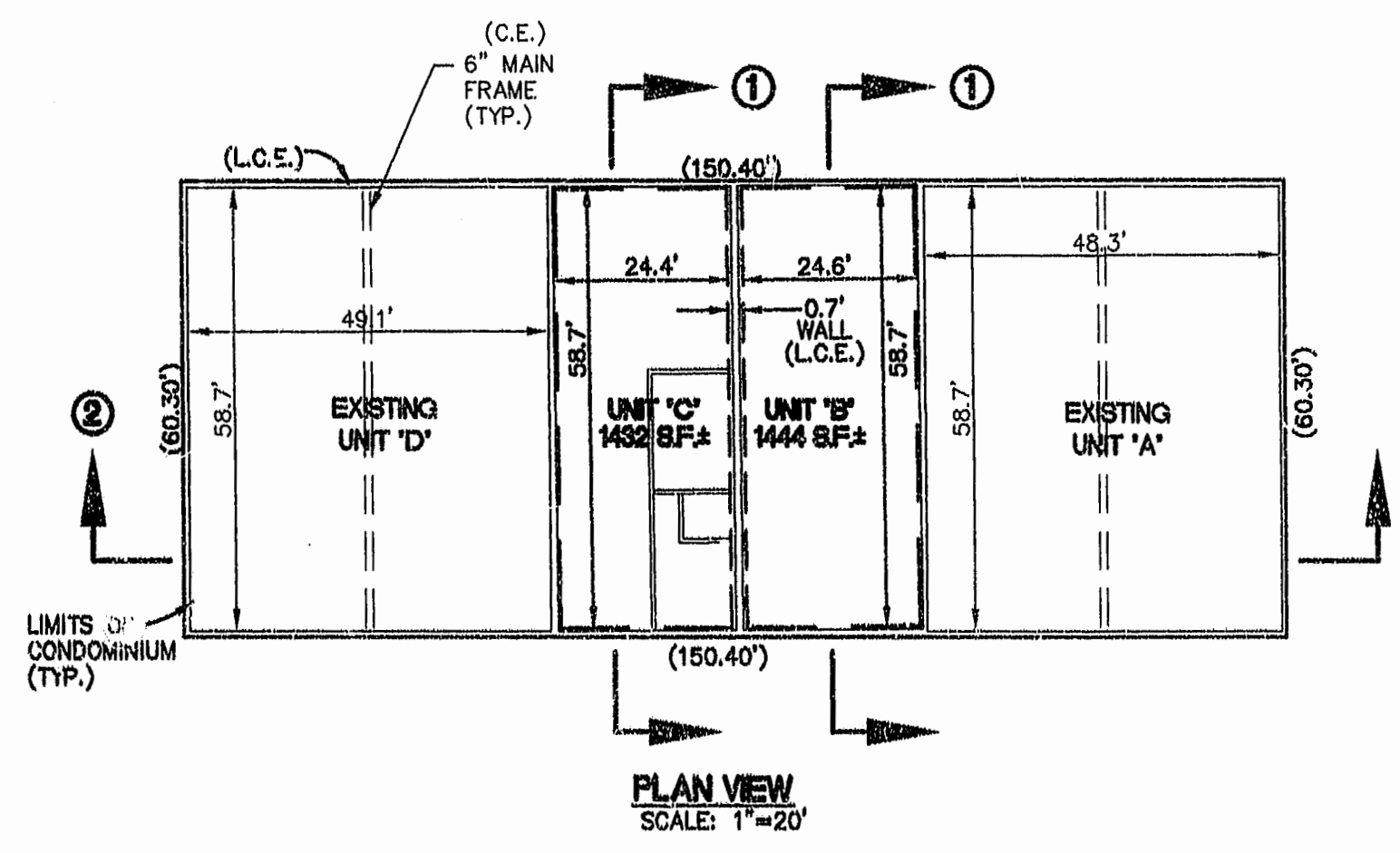
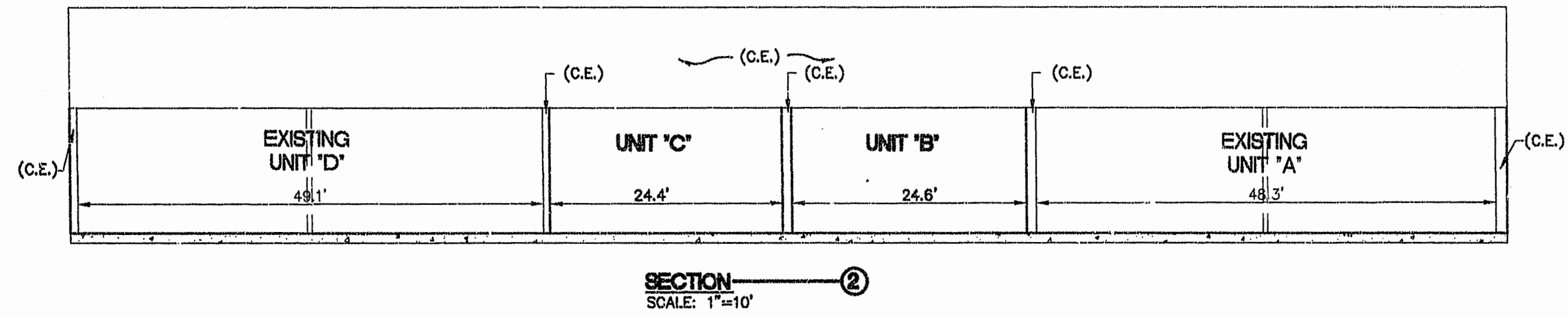


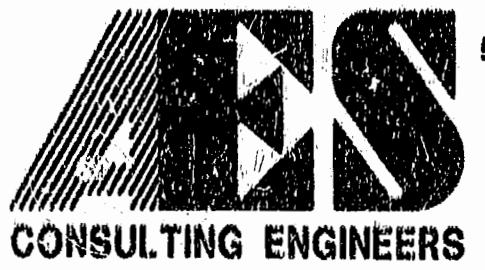
I DO HEREBY CERTIFY THAT I HAVE SURVEYED THE SUBMITTED LAND AND DO FURTHER CERTIFY THAT, TO THE BEST OF MY KNOWLEDGE AND BELIEF, THIS PLAT SHOWING LOCATION AND DIMENSIONS OF THE SUBMITTED LAND IS ACCURATE AND THE PLAT COMPLIES WITH THE PROVISIONS OF SECTION 55-79.70 (E) OF THE CODE OF VIRGINIA AS AMENDED. ALL UNITS HAVE BEEN SUBSTANTIALLY COMPLETED.

AES, a professional corporation
 BY: Ronald W. Eads - 9/27/95
 RONALD W. EADS, L.S. #1948



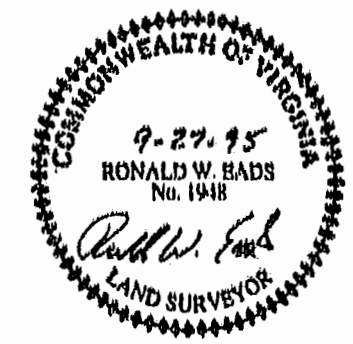
PLAT RECORDED IN
 F.S. NO. 62 PAGE 86, 87

Recorded 2:42 p.m. day of October 1995
 in
 D.B. No. 757 pages 35
Debra Howard Clerk



5248 Olde Towne Road, Suite 1
 Williamsburg, Virginia 23188
 (804) 253-0040
 Fax (804) 220-8994

EXHIBIT 'B'
 PLAT OF SUBDIVISION
 UNIT "B" TO UNITS "B" & "C"
 TEWNING BUSINESS CENTER CONDOMINIUM
 OWNER/DEVELOPER: ROBERT F. & CATHERINE J. RIPLEY
 BERKELEY DISTRICT JAMES CITY COUNTY VIRGINIA



No.	DATE	REVISION / COMMENT / NOTE	BY

Designed	Drawn
Scale	Date
AS NOTED 9/27/95	
Project No.	
7459-C-1	
Drawing No.	
2 OF 2	

09-27-95-09-29 74591P01 MLP