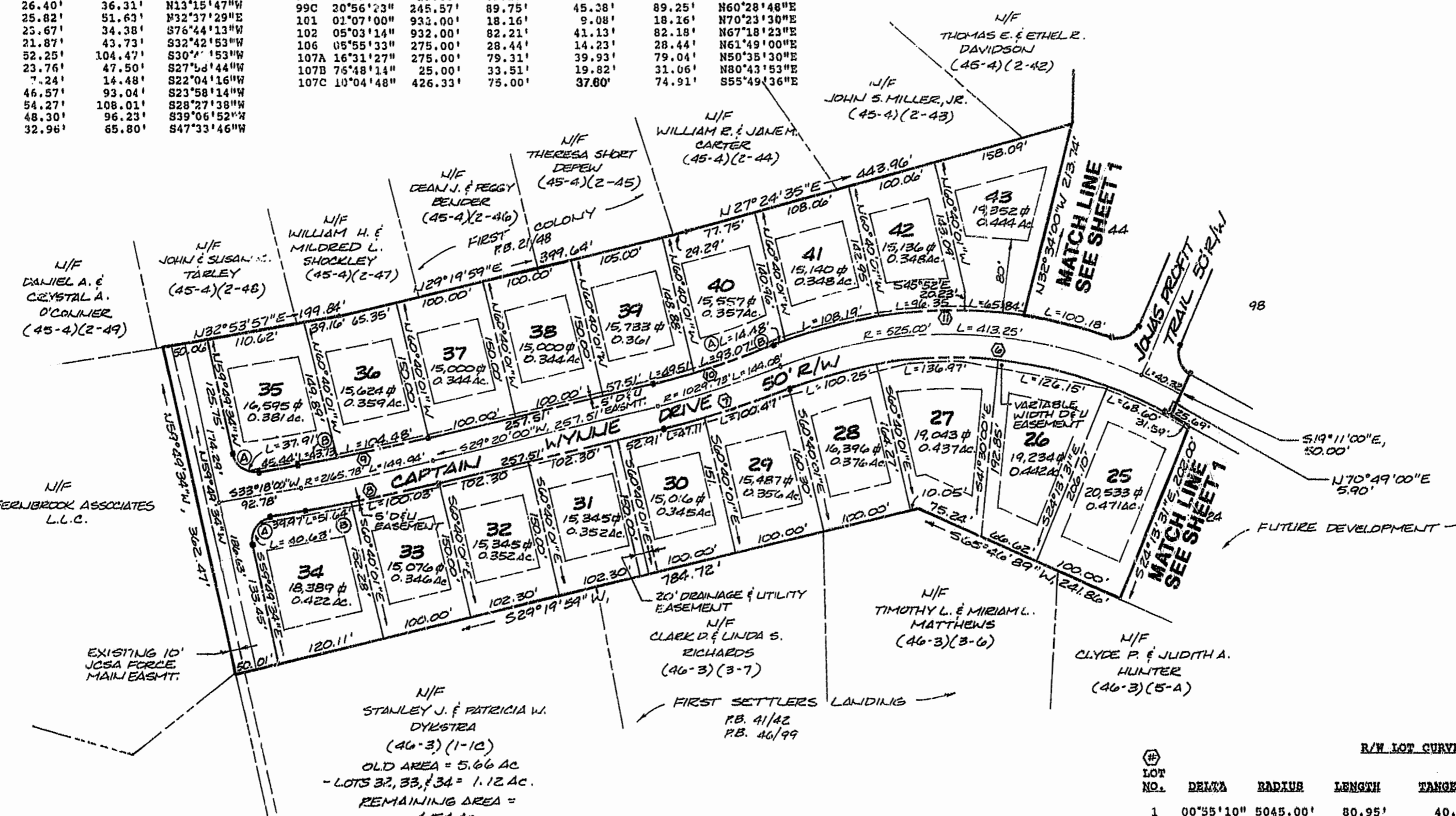
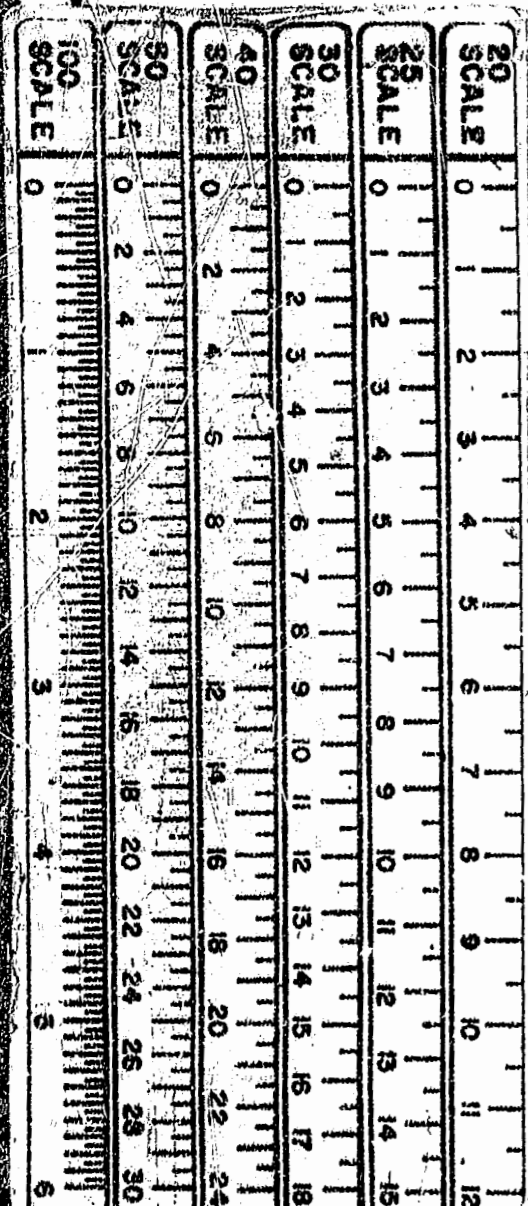
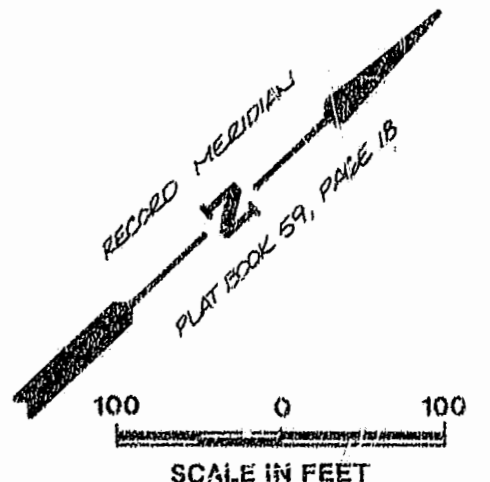


LOT CURVE DATA

LOT NO.	DELTA	RADIUS	LENGTH	TANGENT	CHORD	CHORD BEARING
1	03°56'17"	657.62'	45.01'	22.51'	45.00'	N59°40'27"W
2A	05°48'40"	1205.00'	122.21'	61.16'	122.16'	S58°43'57"E
2B	08°31'51"	657.62'	97.91'	49.05'	97.82'	N53°27'05"W
3A	04°24'20"	1205.00'	92.65'	46.35'	92.63'	S53°37'29"W
3B	02°59'10"	657.62'	34.27'	17.14'	34.27'	N47°41'53"W
4	07°59'49"	156.72'	63.75'	31.92'	63.69'	N50°11'46"W
5A	85°45'34"	25.00'	37.42'	23.22'	34.02'	S76°15'13"W
5B	06°40'11"	456.72'	55.17'	26.61'	53.14'	N57°32'05"W
5C	01°08'53"	5085.00'	101.29'	50.65'	101.29'	S53°13'42"E
5D	87°10'34"	25.00'	38.04'	23.80'	34.47'	S10°12'51"W
6A	08°08'34"	476.33'	67.69'	33.90'	67.64'	N56°47'34"W
6B	94°14'26"	25.00'	41.12'	26.92'	36.64'	N13°44'47"W
6C	91°54'37"	25.00'	40.10'	25.85'	35.94'	N79°19'44"E
25	07°51'40"	500.00'	68.60'	34.36'	68.55'	N66°53'10"E
26	14°27'20"	500.00'	126.15'	63.41'	125.81'	N55°43'40"E
27	15°41'45"	500.00'	136.97'	68.92'	135.84'	N40°39'07"E
28	11°29'15"	500.00'	104.25'	50.29'	100.08'	N27°03'37"W
29	05°27'27"	1054.73'	100.47'	50.27'	100.43'	N24°02'44"E
30	02°33'33"	1054.73'	47.11'	23.56'	47.11'	N28°03'14"W
33	04°36'58"	2190.78'	100.03'	50.03'	100.03'	N40°38'29"E
34A	93°07'34"	25.00'	40.62'	26.40'	36.31'	N13°15'47"W
34B	01°21'02"	2190.78'	51.64'	25.82'	51.63'	N32°37'29"W
35A	86°52'26"	25.00'	37.91'	25.67'	34.38'	S76°44'13"W
35B	01°10'14"	2140.78'	43.73'	21.87'	43.73'	S32°42'53"W
36	02°47'46"	2140.78'	104.48'	52.25'	104.47'	S30°4'15"W
39	02°42'32"	1004.73'	47.50'	23.76'	47.50'	S27°13'44"W
40A	01°30'32"	550.00'	14.48'	7.24'	14.48'	S22°04'16"W
40B	05°18'28"	1004.73'	93.07'	46.57'	93.04'	S23°58'14"W
41	11°16'13"	550.00'	108.19'	54.27'	108.01'	S28°27'38"W
42	10°02'15"	550.00'	96.35'	48.30'	96.23'	S39°06'52"W
43	06°51'33"	550.00'	65.84'	32.96'	65.80'	S47°33'46"W

PUMP STATION '07

DELTA	RADIUS	LENGTH	TANGENT	CHORD	CHORD BEARING
07°21'51"	391.21'	50.28'	25.18'	50.24'	S29°16'02"E

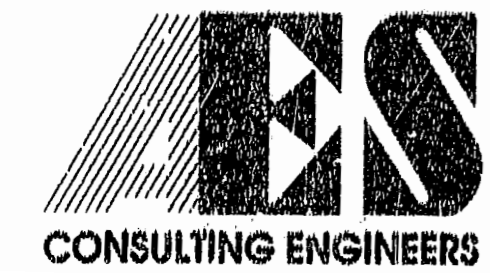


PLAT RECORDED IN
 P.B. NO. 62 PAGE 83-84
 1:28 pm
 Recorded 29 day of September 1995
 D.B. No. 753 pages 713
 Clerk

NOTE: STREETS ARE HEREBY DEDICATED FOR PUBLIC USE

R/W LOT CURVE DATA

LOT NO.	DELTA	RADIUS	LENGTH	TANGENT	CHORD	CHORD BEARING
1	00°55'10"	5045.00'	80.95'	40.48'	80.95'	S54°15'25"E
2	91°54'37"	25.00'	40.10'	25.85'	35.94'	S79°19'44"W
3	22°27'00"	275.00'	107.75'	54.58'	107.06'	S53°33'16"W
4	06°10'14"	932.00'	100.37'	50.23'	100.32'	S67°51'53"W
5	16°24'23"	441.21'	126.34'	63.60'	125.91'	S31°47'12"E
6	49°30'00"	500.00'	431.97'	230.50'	418.66'	S46°04'00"W
7	08°01'00"	1054.73'	147.58'	73.91'	147.45'	S25°19'30"W
8	03°58'00"	2190.78'	151.67'	75.87'	151.64'	S31°19'00"W
9	03°58'00"	2140.78'	148.21'	74.13'	148.18'	N31°19'00"E
10	08°01'00"	1004.73'	140.58'	70.40'	140.46'	N25°19'30"E
11	40°06'41"	550.00'	385.04'	200.79'	377.23'	N41°22'21"E
12	16°24'23"	391.21'	112.02'	56.40'	111.64'	N31°47'12"W
13	20°56'23"	295.57'	108.02'	54.62'	107.42'	N60°28'48"E
14	06°10'14"	882.00'	94.99'	47.54'	94.94'	N67°51'53"W
15	14°40'00"	506.72'	129.71'	65.21'	129.36'	N53°32'00"W
16	90°00'00"	25.00'	39.27'	25.00'	35.36'	N16°38'17"W
17	15°26'18"	657.62'	177.20'	89.14'	176.66'	S53°55'00"E
18	14°40'00"	456.72'	116.91'	58.78'	116.59'	S53°32'00"E
19	87°10'14"	25.00'	38.04'	23.79'	34.47'	S10°12'41"E



5248 Olde Towne Road, Suite 1
 Williamsburg, Virginia 23188
 (804) 253-0040
 Fax (804) 220-8994

PLAT OF SUBDIVISION
FERNBROOK
 PHASE I
 LOTS 1-6, 25-46, 73-82, & 98-107
 OWNER/DEVELOPER: FERNBROOK ASSOCIATES, L.L.C.
 AND STANLEY J. & PATRICIA W. DYKSTRA
 JAMES CITY COUNTY JAMESTOWN DISTRICT VIRGINIA



No.	DATE	REVISION / COMMENT / NOTE	BY

Designed GAM
 Drawn RMJ
 Scale 1"=100'
 Date JULY 31, 1995
 Project No. 6877
 Drawing No. 2 of 2