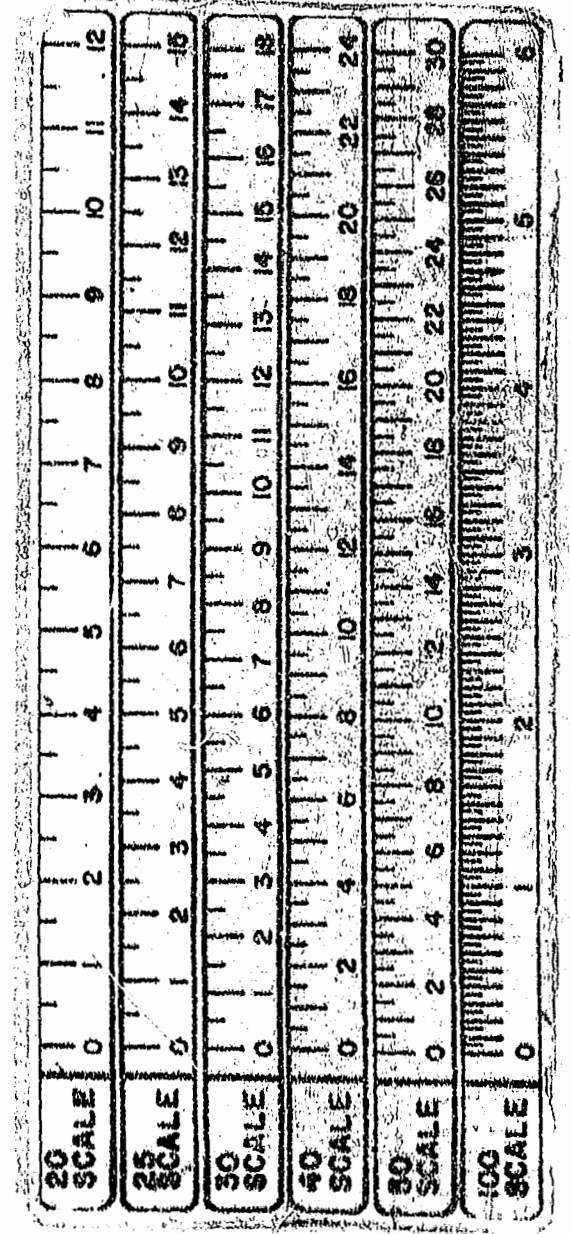
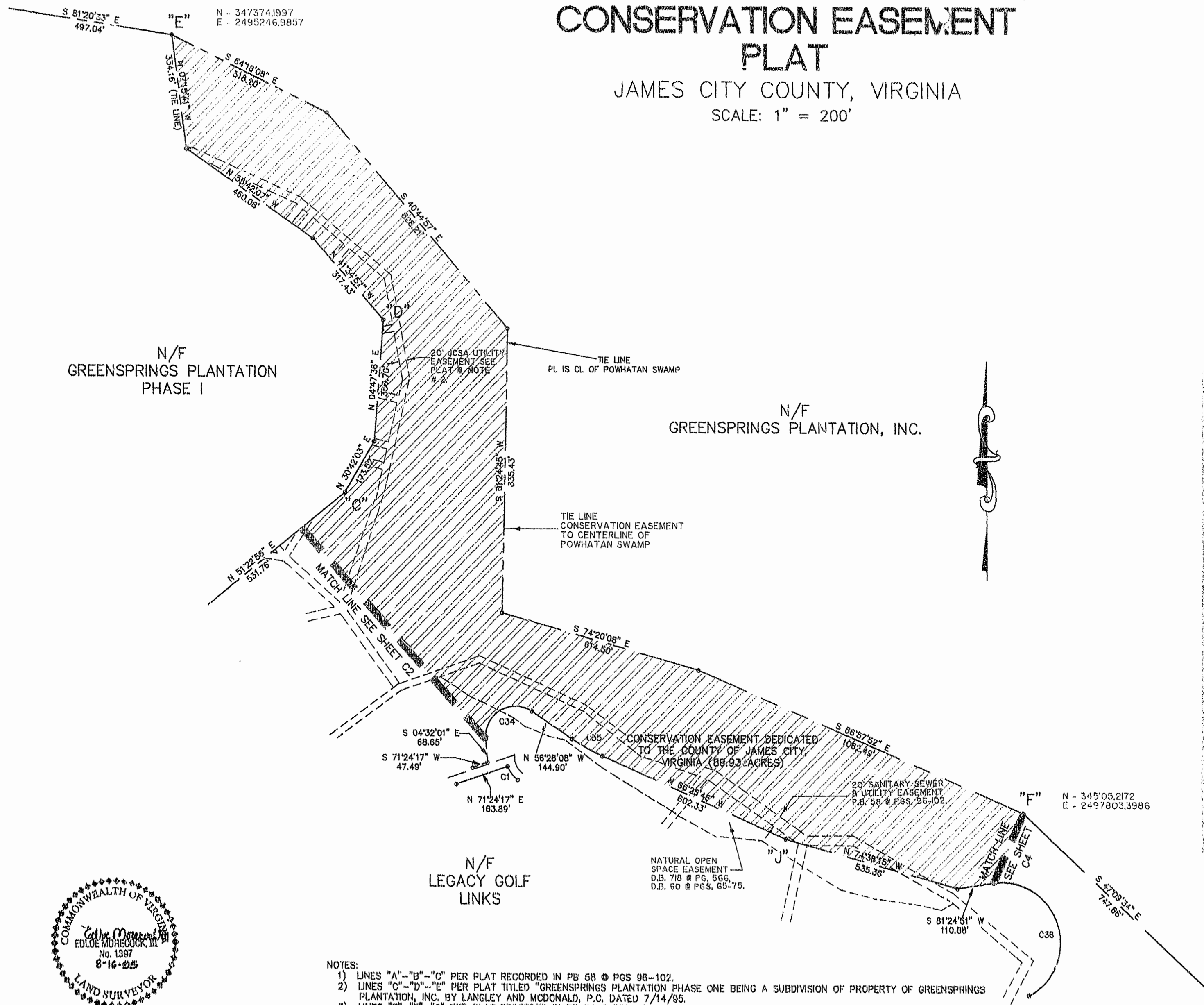
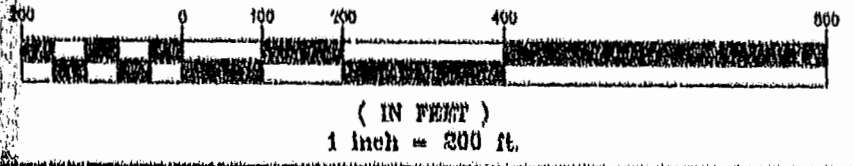


GREENSPRINGS PLANTATION CONSERVATION EASEMENT PLAT

JAMES CITY COUNTY, VIRGINIA
SCALE: 1" = 200'



GRAPHIC SCALE



- NOTES:
- 1) LINES "A"- "B"- "C" PER PLAT RECORDED IN PB 58 @ PGS 96-102.
 - 2) LINES "C"- "D"- "E" PER PLAT TITLED "GREENSPRINGS PLANTATION PHASE ONE BEING A SUBDIVISION OF PROPERTY OF GREENSPRINGS PLANTATION, INC. BY LANGLEY AND McDONALD, P.C. DATED 7/14/95.
 - 3) LINES "E"- "F"- "G" PER PLAT RECORDED IN PB 54 @ PGS 69-78.
 - 4) LINES "G"- "H"- "I" PER PLAT TITLED "SUBDIVISION OF PROPERTY OF GREENSPRINGS PLANTATION, INC." BY RICHMOND ENGINEERING, INC. DATED 6/1/95.
 - 5) LINES "I"- "J"- "K" PER PLAT RECORDED IN PB 58 @ PGS 96-102.
 - 6) LINES "A"- "L" PER PLAT TITLED "BOUNDARY LINE ADJUSTMENT LEGACY (GREENSPRINGS) LIMITED PARTNERSHIP BY LANGLEY AND McDONALD, P.C. DATED 12/19/94.

Recorded 20th day of September, 1995
 D.D. No. 255 pages 78
 Clerk
 Notary Public

Rickmond Engineering, Inc.
 1643 Merrimac Trail
 Williamsburg VA 23185
 (804)229-1776 or 875-1785
 Date: 2/21/96 Project No. 0510 Sheet No. 03