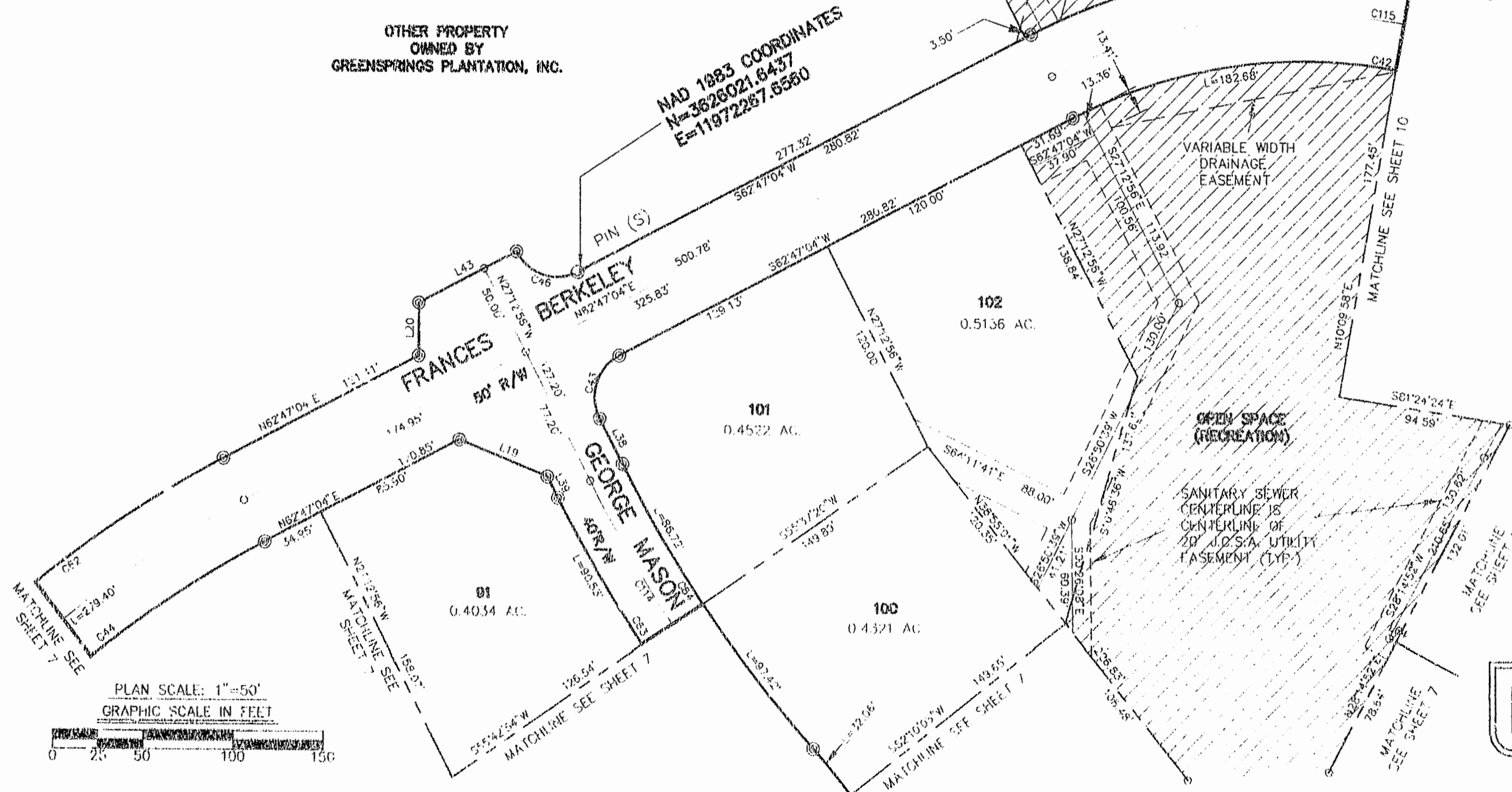
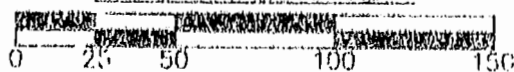


OTHER PROPERTY OWNED BY GREENSPRINGS PLANTATION, INC.

MAD 1883 COORDINATES
N=3626021.8437
E=11972267.6560



PLAN SCALE: 1"=50'
GRAPHIC SCALE IN FEET



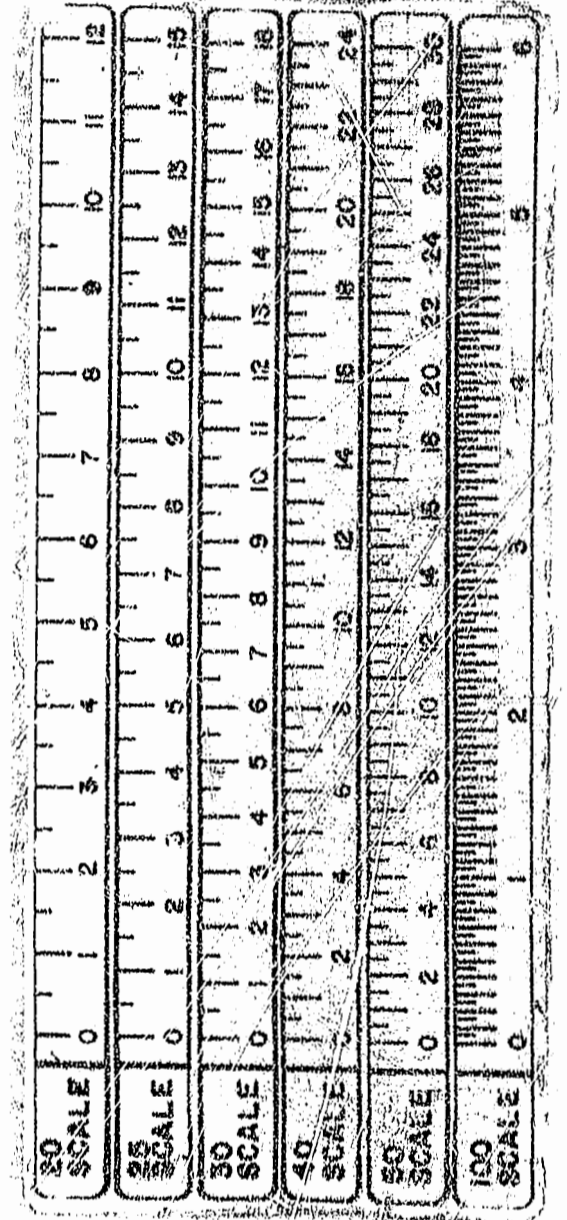
OTHER PROPERTY OWNED BY GREENSPRINGS PLANTATION, INC.

THE FARM NEAR CENTERLINE OF CENTERLINE OF 20' DRAINAGE EASEMENT (TYP.)

OPEN SPACE (RECREATION)

1059 AC

OPEN SPACE



DATE REVISIONS BY
REV. NO. 02 7/14/95-04

Revised on August 1995
REV. NO. 750 8/1/95
[Signature]

GREENSPRINGS PLANTATION
PHASE ONE
BEING A SUBDIVISION OF PROPERTY OF
GREENSPRINGS PLANTATION INC.
BERKELEY DISTRICT
JAMES CITY COUNTY, VIRGINIA
SCALE: 1"=50' 7/14/95



Langley and McDonald, P.C.

Engineers - Surveyors - Planners
Landscape Architects - Environmental Consultants

VIRGINIA BEACH

WILLIAMSBURG