

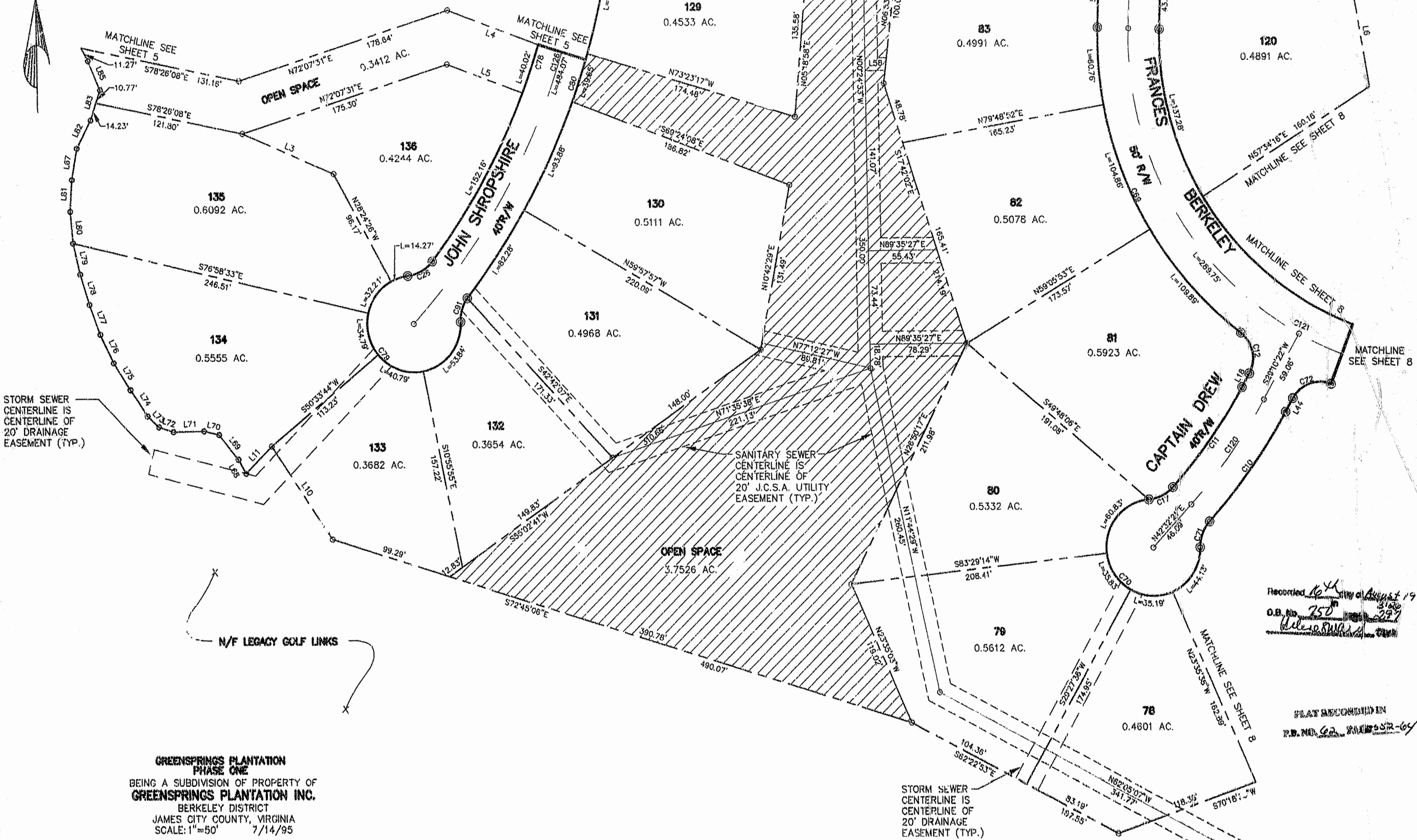
STORM SEWER CENTERLINE IS CENTERLINE OF 20' DRAINAGE EASEMENT (TYP.)

SANITARY SEWER CENTERLINE IS CENTERLINE OF 20' J.C.S.A. UTILITY EASEMENT (TYP.)

STORM SEWER CENTERLINE IS CENTERLINE OF 20' DRAINAGE EASEMENT (TYP.)

SANITARY SEWER CENTERLINE IS CENTERLINE OF 20' J.C.S.A. UTILITY EASEMENT (TYP.)

MATCHLINE SEE SHEET 8

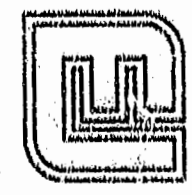


N/F LEGACY GOLF LINKS

Recorded 16th day of August 1995  
 O.B. No. 750  
 [Signature]

PLAT RECORDED IN  
 P.B. NO. 62, 2/11/95-05

**GREENSPRINGS PLANTATION**  
**PHASE ONE**  
 BEING A SUBDIVISION OF PROPERTY OF  
**GREENSPRINGS PLANTATION INC.**  
 BERKELEY DISTRICT  
 JAMES CITY COUNTY, VIRGINIA  
 SCALE: 1"=50' 7/14/95



**Langley and McDonald, P.C.**  
 Engineers - Surveyors - Planners  
 Landscape Architects - Environmental Consultants  
 VIRGINIA BEACH WILLIAMSBURG

