

RELOCATED STATE ROUTE 614
VARIABLE WIDTH RIGHT-OF-WAY

OTHER PROPERTY OWNED BY
GREENSPRINGS PLANTATION, INC.

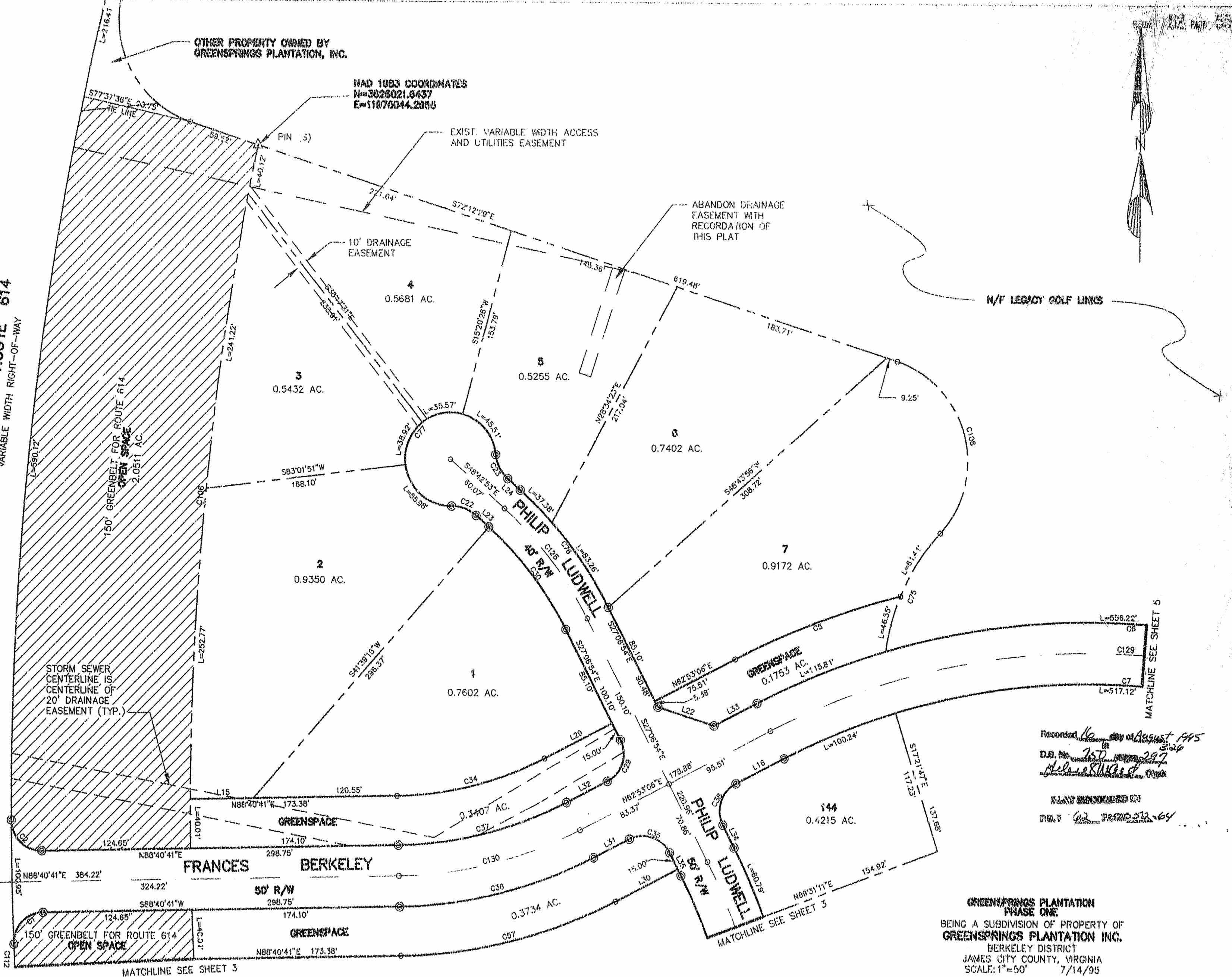
NAD 1983 COORDINATES
N=3828021.8437
E=11870044.2856

EXIST. VARIABLE WIDTH ACCESS
AND UTILITIES EASEMENT

ABANDON DRAINAGE
EASEMENT WITH
RECORDATION OF
THIS PLAT

N/F LEGACY GOLF LINKS

STORM SEWER
CENTERLINE IS
CENTERLINE OF
20' DRAINAGE
EASEMENT (TYP.)



Recorded 16 day of August 1995
D.B. No. 257
Release/Record

PLAN RECORDED IN
REG. 62 RECORD 532 164

GREENSPRINGS PLANTATION
PHASE ONE
BEING A SUBDIVISION OF PROPERTY OF
GREENSPRINGS PLANTATION INC.
BERKELEY DISTRICT
JAMES CITY COUNTY, VIRGINIA
SCALE: 1"=50' 7/14/95

Langley and McDonald, P.C.
Engineers - Surveyors - Planners
Landscape Architects - Environmental Consultants
VIRGINIA BEACH WILLIAMSBURG

Q OF 120' RIGHT-OF-WAY

MATCHLINE SEE SHEET 3

MATCHLINE SEE SHEET 3

MATCHLINE SEE SHEET 5

