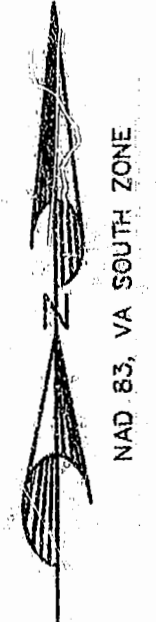
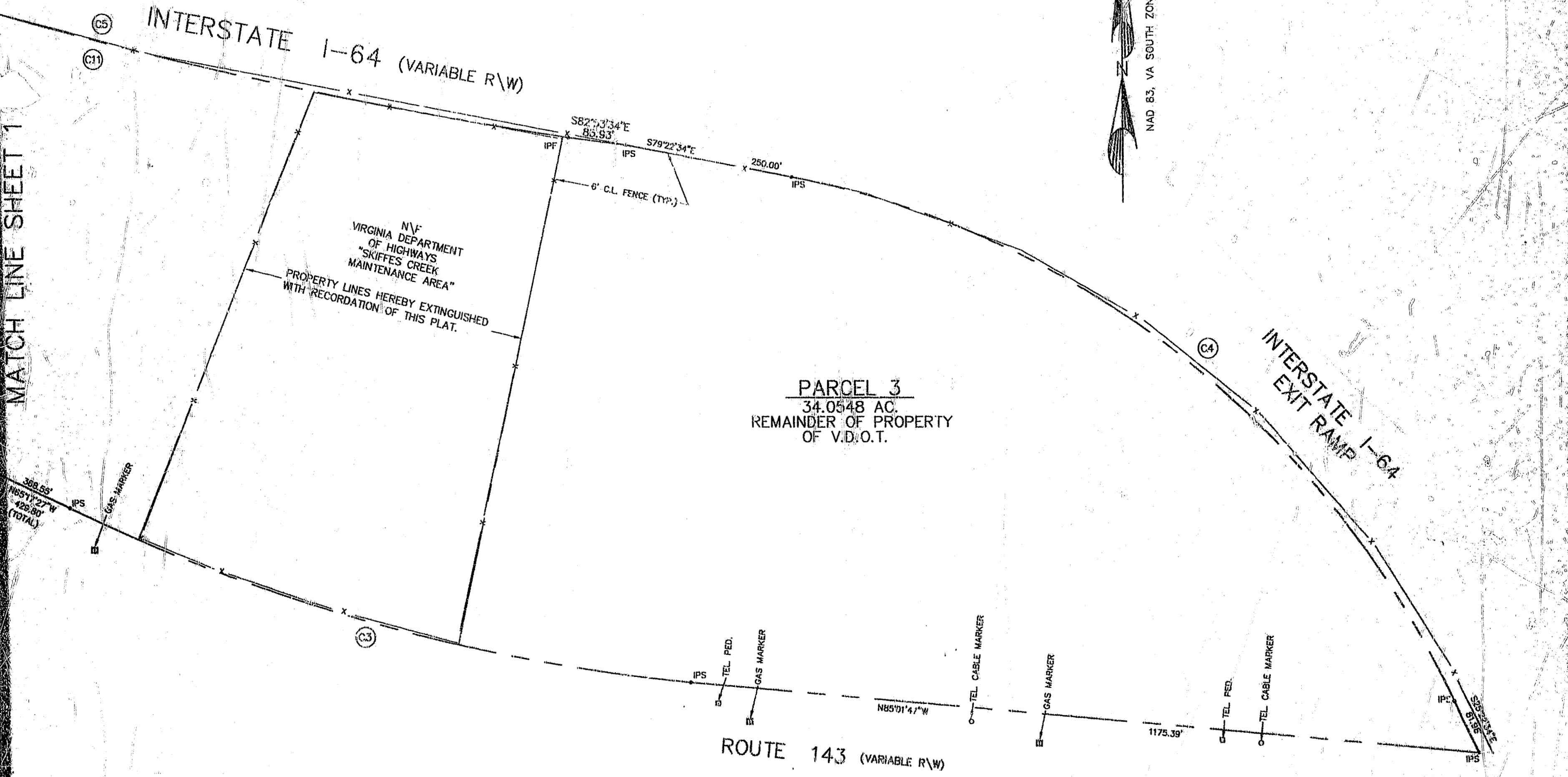


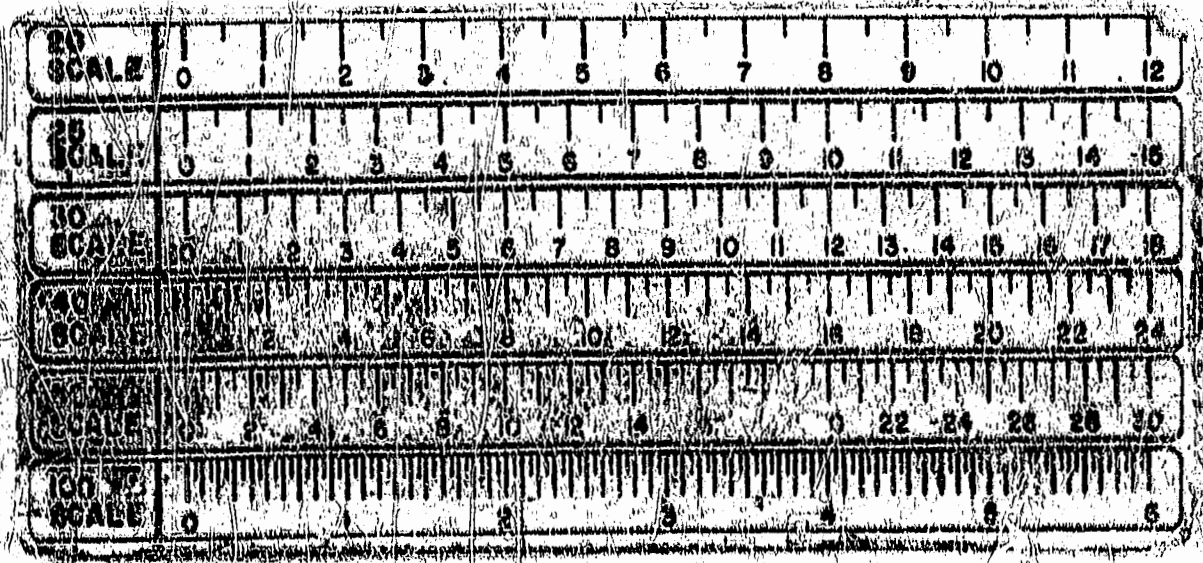
CURVE	RADIUS	LENGTH	TANGENT	CHORD	BEARING	DELTA
C1	5600.00'	1646.70'	1029.34'	1940.78'	S58°18'23"E	16°50'53"
C2	5560.10'	167.58'	83.80'	167.58'	N84°25'39"W	01°43'37"
C3	2794.79'	962.83'	426.23'	958.07'	S74°48'07"E	10°44'20"
C4	1367.35'	1284.02'	894.17'	1237.02'	N52°22'34"W	54°00'00"
C5	7243.97'	3356.12'	1768.73'	3326.18'	S88°20'57"E	28°32'42"
C6	7293.97'	1445.22'	724.98'	1442.88'	S68°41'53"E	11°21'09"
C7	7293.97'	1009.61'	505.82'	1008.81'	S59°03'23"E	07°55'51"
C8	7243.97'	2442.43'	1222.92'	2430.88'	S64°44'09"E	19°19'06"
C9	5600.00'	383.70'	191.83'	383.63'	S48°40'43"E	03°35'33"
C10	5600.00'	1263.00'	631.50'	1260.33'	N87°08'18"W	12°58'20"
C11	7243.97'	913.69'	457.45'	913.98'	S78°00'30"E	07°13'36"

REVISIONS: AS PER VDOT COMMENTS 8/4/95

MATCH LINE SHEET 1

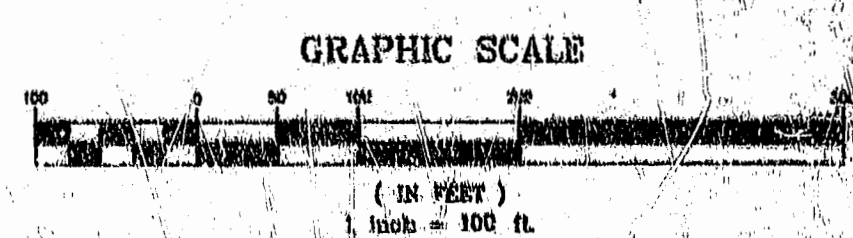


PARCEL 3
34.0548 AC.
REMAINDER OF PROPERTY
OF V.D.O.T.



PLAT
OF
PARCELS 1,2,3
BEING A SUBDIVISION OF PROPERTY OF
COMMONWEALTH OF VIRGINIA
(D.B.108, PG.518)
SCALE: 1"=100' DATE: 7/31/95
SHEET 2 OF 2

Langley and McDonald, P.C.
Engineers - Surveyors - Planners
Landscape Architects - Environmental Consultants
VIRGINIA BEACH WILLIAMSBURG



PLAT RECORDED IN
P.M. NO. 122 PAGES 50-57
Recorded 15 days of August 1995
D.B. No. 750