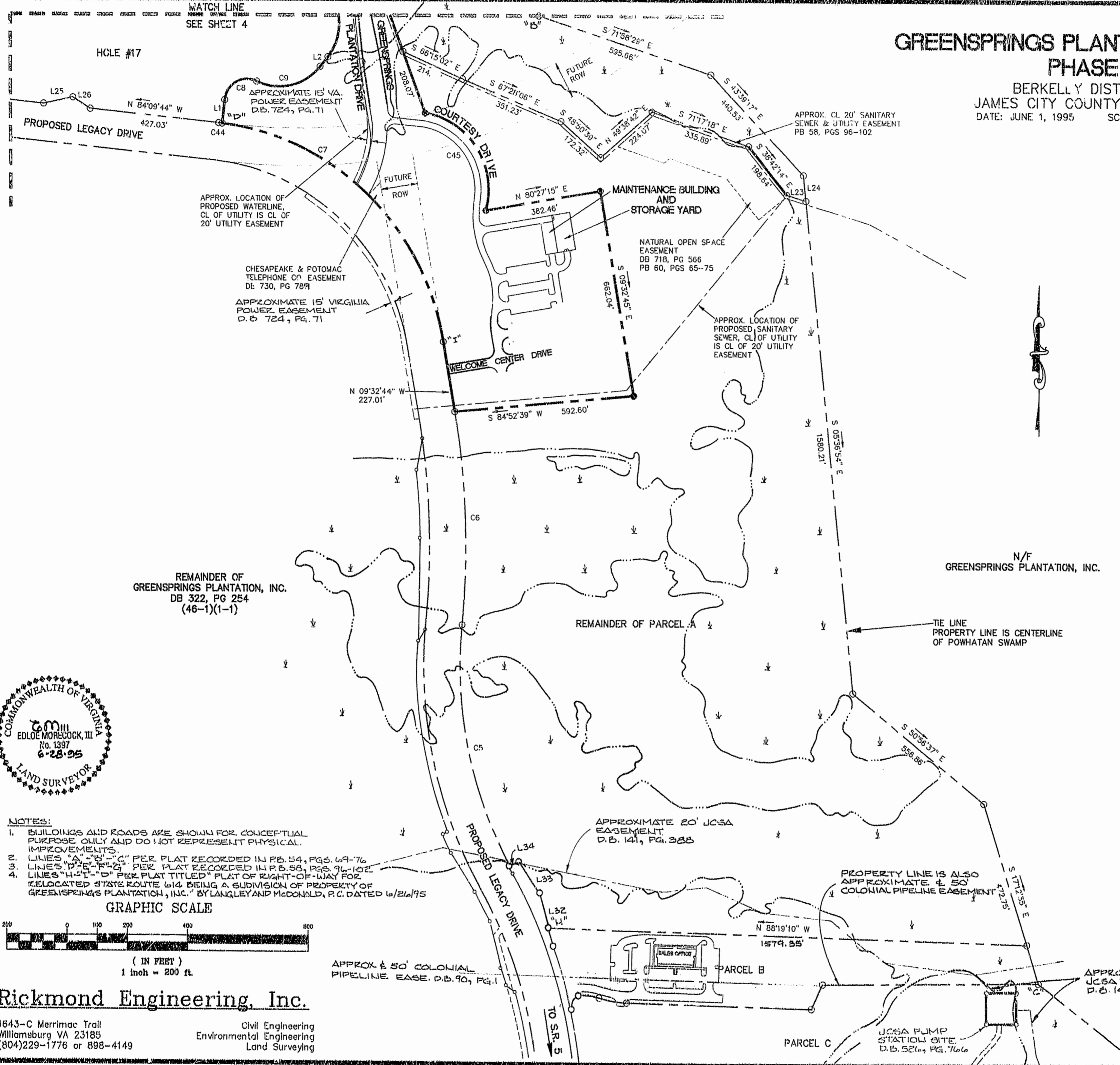


WATCH LINE  
SEE SHEET 4

# GREENSPRINGS PLANTATION RESORT PHASE I

BERKELLY DISTRICT  
JAMES CITY COUNTY, VIRGINIA  
DATE: JUNE 1, 1995 SCALE: 1"=200'



REMAINDER OF  
GREENSPRINGS PLANTATION, INC.  
DB 322, PG 254  
(46-1)(1-1)

REMAINDER OF PARCEL A

N/F  
GREENSPRINGS PLANTATION, INC.

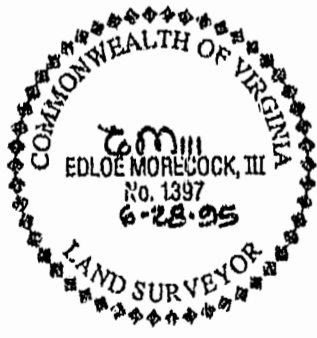
TIE LINE  
PROPERTY LINE IS CENTERLINE  
OF POWHATAN SWAMP

APPROXIMATE 20' JCSA  
EASEMENT  
D.B. 141, PG. 385

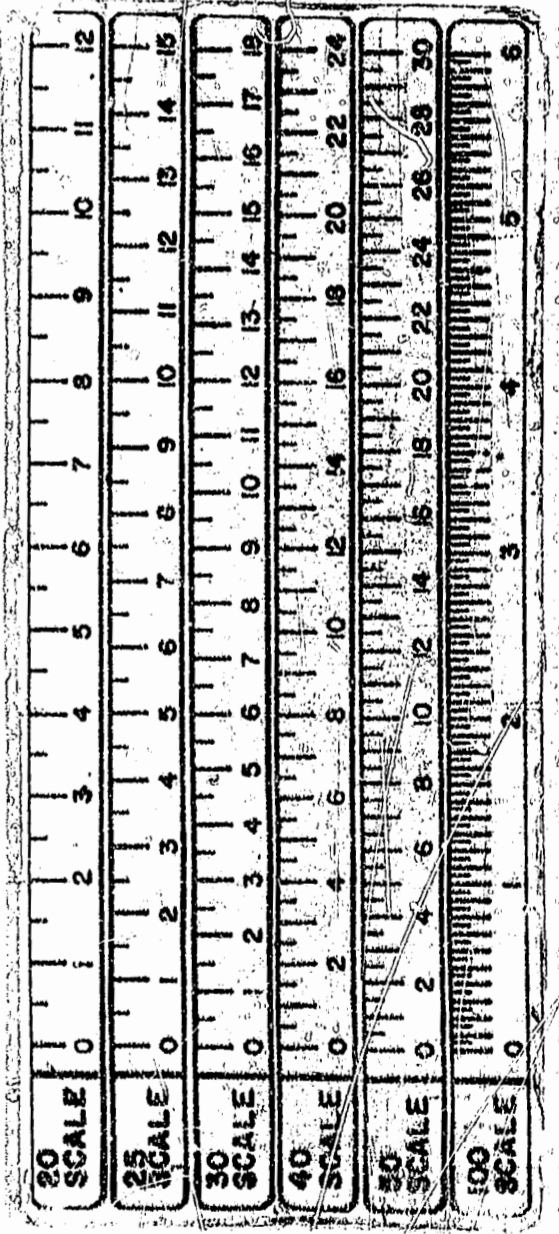
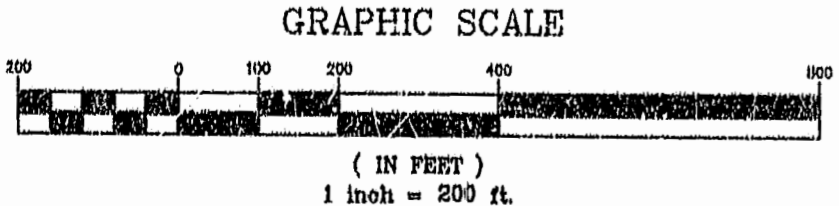
PROPERTY LINE IS ALSO  
APPROXIMATE ± 50'  
COLONIAL PIPELINE EASEMENT

APPROX. ± 50' COLONIAL  
PIPELINE. EASE. D.B. 90, PG. 1

APPROXIMATE ± 20'  
JCSA EASEMENT  
D.B. 141, PG. 385  
Recorded 15<sup>th</sup> day of Aug, 1995  
D.B. No. 747 pages 96-9  
Clerk



- NOTES:
1. BUILDINGS AND ROADS ARE SHOWN FOR CONCEPTUAL PURPOSE ONLY AND DO NOT REPRESENT PHYSICAL IMPROVEMENTS.
  2. LINES "A", "B", "C" PER PLAT RECORDED IN PB 54, PGS 69-76
  3. LINES "D", "E", "F", "G" PER PLAT RECORDED IN PB 58, PGS 96-102
  4. LINES "H", "I", "O" PER PLAT TITLED "PLAT OF RIGHT-OF-WAY FOR RELOCATED STATE ROUTE 614, BEING A SUBDIVISION OF PROPERTY OF GREENSPRINGS PLANTATION, INC." BY LANGLEY AND McDONALD, P.C. DATED 6/26/95



**Rickmond Engineering, Inc.**  
 1643-C Merrimac Trail  
 Williamsburg VA 23185  
 (804)229-1776 or 898-4149  
 Civil Engineering  
 Environmental Engineering  
 Land Surveying