

- ⓧ Δ = 107°51'23"
R = 50.00'
T = 88.64'
L = 94.12'
C = 80.83'
CB = N 25°38'50" W
- Ⓨ Δ = 07°08'07"
R = 475.00'
T = 29.61'
L = 59.15'
C = 59.12'
CB = N 83°08'35" W
- Ⓩ Δ = 13°42'38"
R = 525.00'
T = 63.12'
L = 125.63'
C = 125.33'
CB = 79°51'19" W

- ⓐ Δ = 20°44'26"
R = 145.00'
T = 28.53'
L = 52.49'
C = 52.20'
CB = N 02°31'13" E

- ⓑ Δ = 08°14'58"
R = 145.00'
T = 10.46'
L = 20.88'
C = 20.86'
CB = N 11°58'29" W

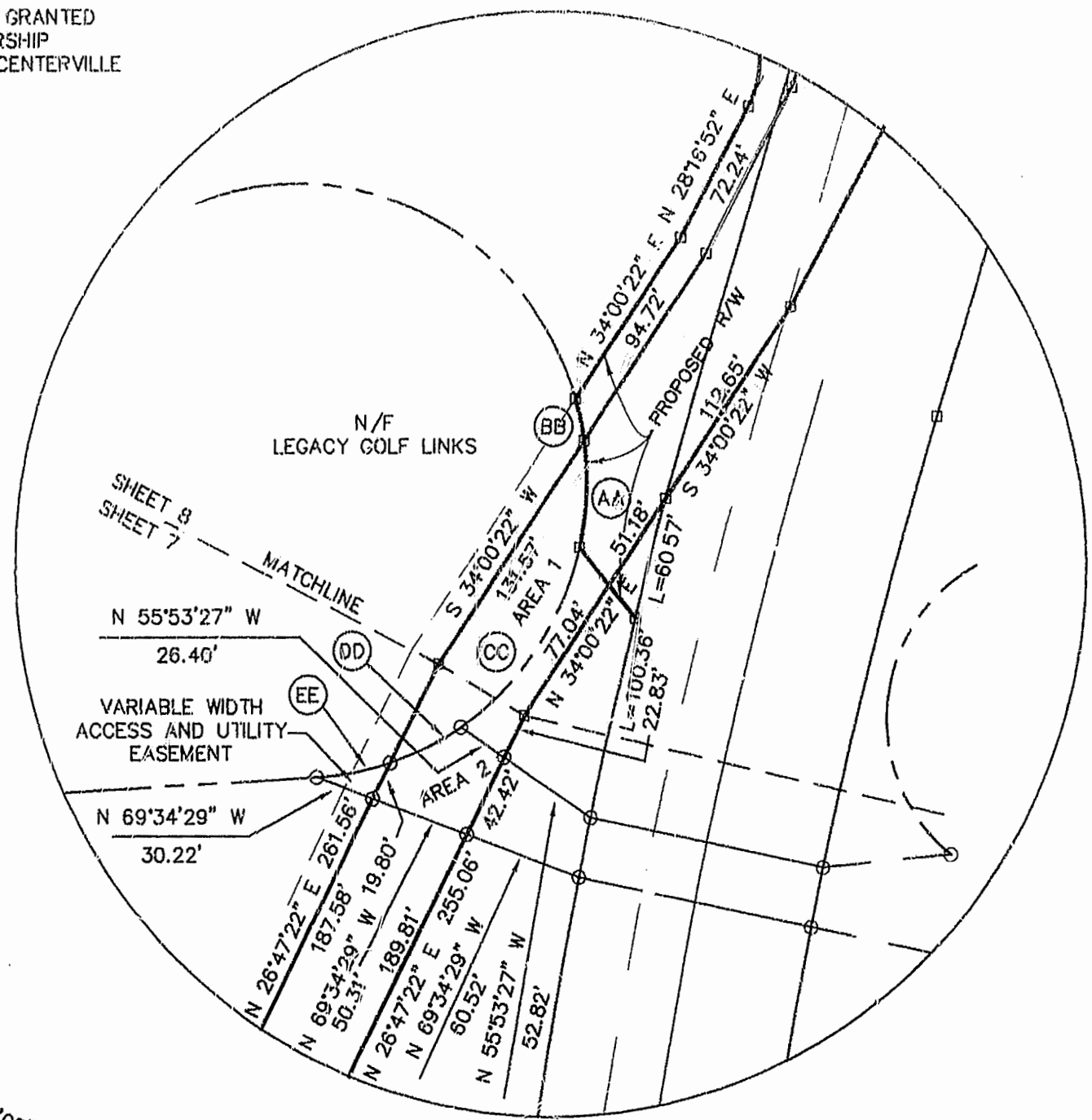
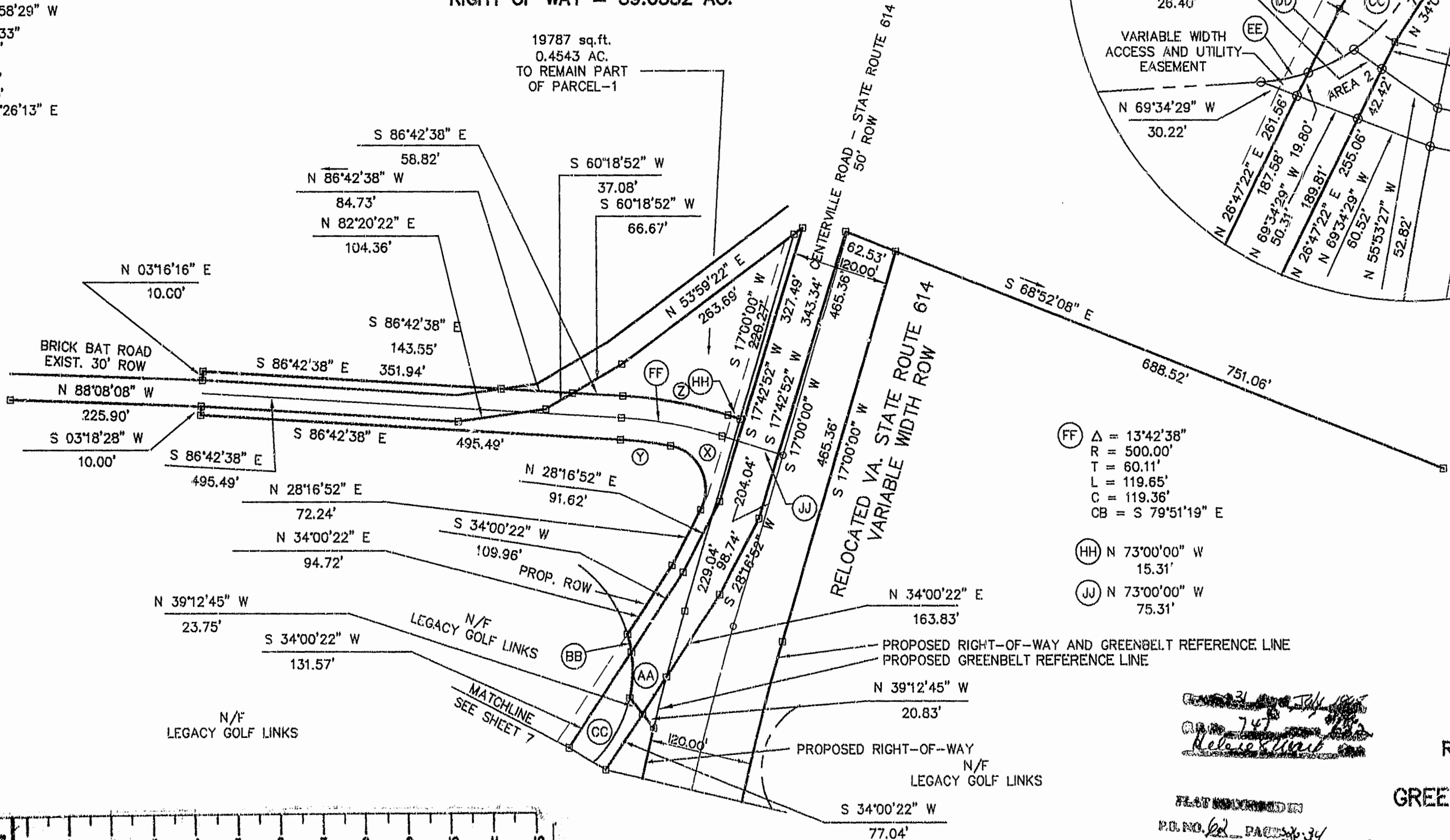
- ⓒ Δ = 43°05'33"
R = 145.00'
T = 57.25'
L = 109.06'
C = 106.50'
CB = N 34°26'13" E

AREA 1 - TO BE CONVEYED TO LEGACY (GREENSPRINGS) LIMITED PARTNERSHIP SUBJECT TO ABANDONMENT OF EXISTING CENTERVILLE ROAD RIGHT-OF-WAY.

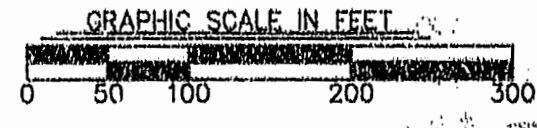
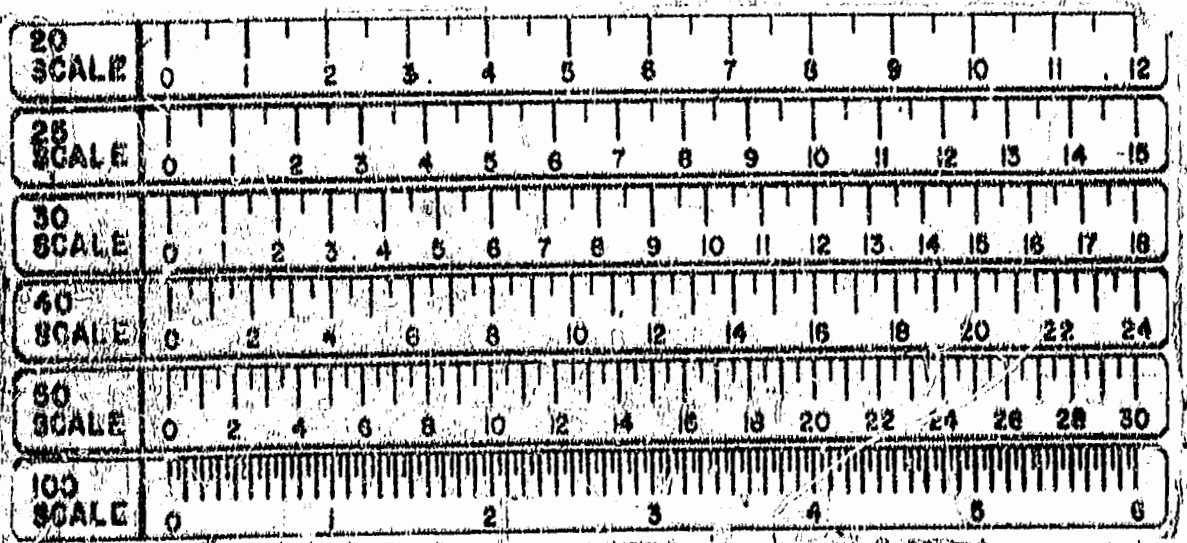
AREA 2 - ACCESS AND UTILITIES EASEMENT TO BE GRANTED LEGACY (GREENSPRINGS) LIMITED PARTNERSHIP SUBJECT TO ABANDONMENT OF EXISTING CENTERVILLE ROAD RIGHT-OF-WAY.

TOTAL AREA OF RELOCATED RIGHT OF WAY = 39.6332 AC.

19787 sq.ft.
0.4543 AC.
TO REMAIN PART OF PARCEL-1



- ⓕ Δ = 13°42'38"
R = 500.00'
T = 60.11'
L = 119.65'
C = 119.36'
CB = S 79°51'19" E
- ⓗ N 73°00'00" W
15.31'
- ⓓ N 73°00'00" W
75.31'



PLAT NO. 747
RELEASED

PLAT NO. 62
PAGE 34

PLAT OF RIGHT OF WAY FOR RELOCATED STATE ROUTE 614 BEING A SUBDIVISION OF PROPERTY OF GREENSPRINGS PLANTATION, INC. BERKELEY DISTRICT JAMES CITY COUNTY, VIRGINIA DATE: 6/26/95 SCALE: 1"=100' SHEET 8 OF 9



Langley and McDonald, P.C.
Engineers - Surveyors - Planners
Landscape Architects - Environmental Consultants
VIRGINIA BEACH WILLIAMSBURG