

(S) Δ = 30'10'25"
 R = 2087.00'
 T = 562.60'
 L = 1099.0'
 C = 1086.41'
 CB = N 18'19'51" W

(T) Δ = 04'53'19"
 R = 1967.00'
 T = 83.97'
 L = 167.83'
 C = 167.78'
 CB = N 06'19'19" W

(O) Δ = 18'15'29"
 R = 1713.00'
 T = 275.27'
 L = 545.87'
 C = 543.57'
 CB = S 12'22'23" E

(P) Δ = 18'15'29"
 R = 1833.00'
 T = 294.55'
 L = 584.11'
 C = 581.64'
 CB = N 12'22'23" W

(R) Δ = 00'38'01"
 R = 1967.00'
 T = 10.88'
 L = 21.76'
 C = 21.75'
 CB = S 03'33'39" E

Δ = 20'12'02"
 R = 1215.00'
 T = 216.43'
 L = 428.37'
 C = 428.15'
 CB = N 86'42'42" E

N/F LEGACY GOLF LINKS

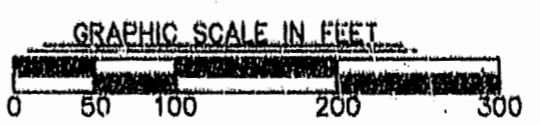
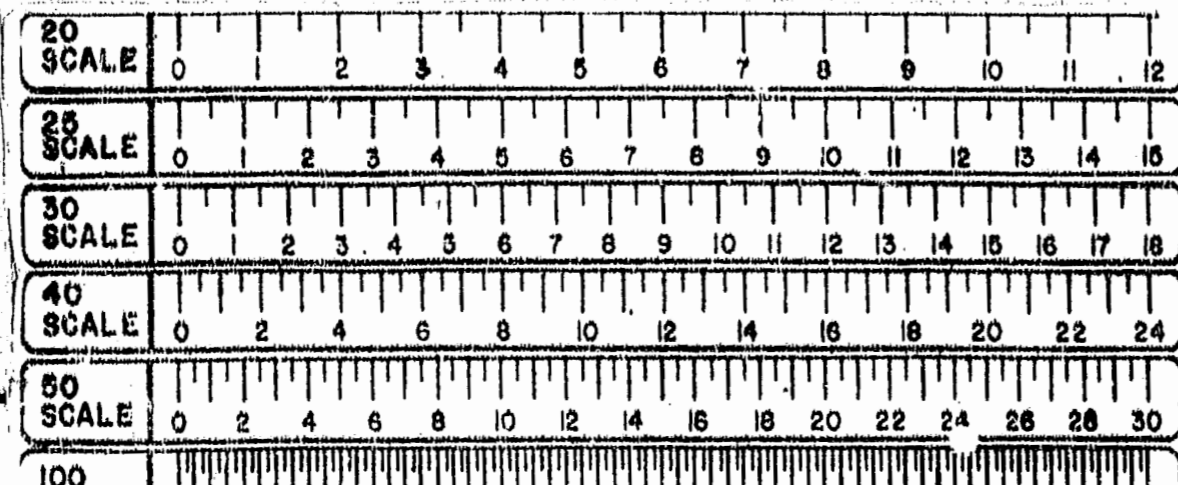
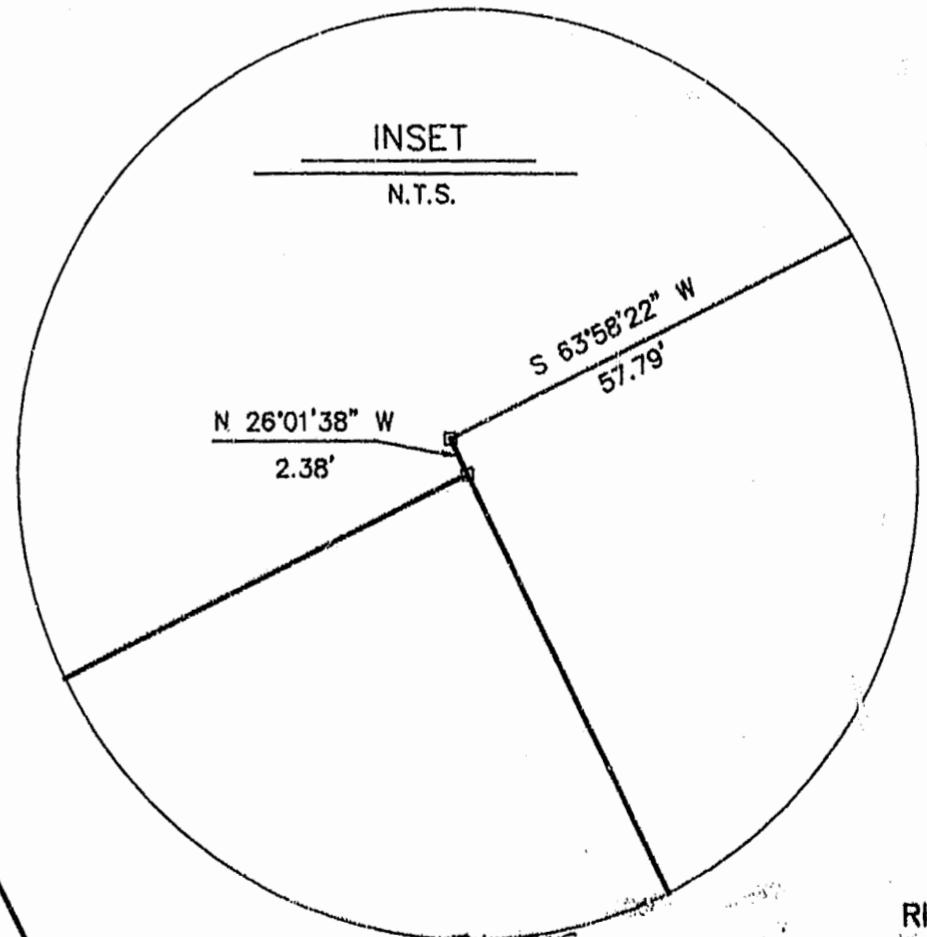
N/F LEGACY (GREENSPRINGS) LIMITED PARTNERSHIP, A VIRGINIA LIMITED PARTNERSHIP

N/F GREENSPRINGS PLANTATIONS, INC.

N/F GREENSPRINGS PLANTATIONS, INC.

U.S.A. GREENSPRINGS PLANTATION NATIONAL HISTORIC SITE

NOTE: EXISTING ROUTE 614 RIGHT-OF-WAY IS TO BE RESERVED BY V.D.O.T.



Recorded 31 day of July 1995
 D.B. No. 747 pages 6, 32
Debra S. White

PLAT RECORDED IN
 P.B. NO. 62 PAGE 26-35

PLAT OF
 RIGHT OF WAY
 FOR
RELOCATED STATE ROUTE 614
 BEING A SUBDIVISION OF
 PROPERTY OF
GREENSPRINGS PLANTATION, INC.
 BERKELEY DISTRICT
 JAMES CITY COUNTY, VIRGINIA
 DATE: 6/26/95 SCALE: 1"=100'
 SHEET 5 OF 9



Langlely and McDonald, P.C.
 Engineers - Surveyors - Planners
 Landscape Architects - Environmental Consultants
 VIRGINIA BEACH WILLIAMSBURG