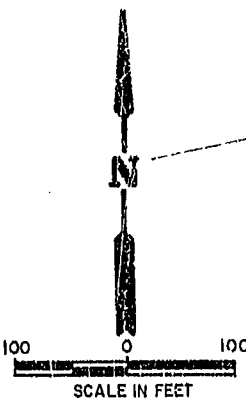


MATCH TO SHEET 3 OF 4



PARCEL 2
GOVERNOR'S LAND
FOUNDATION
PB 54, PG 49-50

NOTE REGARDING SETBACKS:
UNLESS OTHERWISE NOTED,
BUILDING SETBACKS FOR
THE LOTS SHOWN ARE AS
FOLLOWS:

FRONT: 30'
REAR: 25'
SIDE: 10'
R.S. DENOTES FRONT SETBACK
ON LOTS 23 THRU 40

THE FRONT FACADE OF
EACH DWELLING CONSTRUCTED
ON A LOT IN THIS SUBDIVISION
MUST BE GENERALLY PARALLEL
TO THE FRONT SETBACK LINE
ON SUCH LOT, AND THE OWNER
OF A LOT WILL BE OBLIGATED
TO OBTAIN THE APPROVAL
OF THE COVENANTS COMMITTEE
TO THE FACING OF EACH
HOUSE ON EACH LOT.

LOT CURVE DATA

LOT	CURVE DELTA	RADIUS	LENGTH	TANGENT	CHORD	CHORD BEARING
18	00°28'06"	610.00'	4.90'	2.45'	4.90'	N87°48'57"W
19	00°41'01"	600.00'	90.94'	45.55'	90.94'	N83°14'23"W
20	09°05'53"	600.00'	95.28'	47.74'	95.18'	N74°20'56"W
21	3°57'40"	600.00'	93.84'	47.02'	93.74'	N65°19'10"W
22	1°48'20"	600.00'	18.91'	9.45'	18.91'	N59°56'10"W
23	45°39'46"	50.00'	39.95'	21.05'	38.60'	N36°12'07"W
24	48°15'32"	50.00'	42.11'	22.40'	40.88'	N10°45'32"E
25A	84°52'15"	50.00'	74.06'	45.71'	67.48'	S41°28'00"E
25B	102°43'57"	25.00'	44.86'	31.33'	39.08'	N60°39'34"E
25C	08°53'57"	550.00'	85.43'	42.00'	85.34'	S63°28'59"E
25D	60°00'00"	50.00'	52.36'	28.87'	50.00'	S29°02'00"E
26A	09°05'51"	550.00'	87.33'	43.76'	87.24'	S83°30'04"E
26B	88°12'14"	25.00'	36.49'	24.23'	34.80'	S34°51'01"E
35	05°33'35"	1525.00'	147.10'	73.60'	147.04'	N88°32'11"W
36	05°45'37"	1525.00'	153.32'	76.72'	153.25'	N82°53'34"W
37A	92°22'54"	25.00'	40.31'	26.06'	36.08'	S55°26'33"W
37B	61°38'46"	1425.00'	43.01'	21.91'	43.01'	N79°11'23"W
38A	87°37'06"	25.00'	38.25'	23.98'	34.61'	N34°33'27"W
38B	01°45'42"	1447.25'	44.50'	22.25'	44.50'	N77°09'09"W
39	05°20'48"	1447.25'	135.05'	67.58'	135.00'	N73°55'54"W
40A	02°28'17"	1447.25'	62.43'	31.22'	62.42'	N70°01'21"W
40B	40°07'40"	50.00'	35.02'	18.26'	34.31'	N88°51'03"W
40C	47°28'11"	50.00'	41.43'	21.98'	40.25'	N85°10'47"W
41	41°05'57"	50.00'	35.97'	18.74'	35.10'	N40°53'42"W
42	44°26'44"	50.00'	38.79'	20.43'	37.82'	N01°52'38"E
43	20°57'18"	50.00'	25.27'	12.91'	25.00'	N38°34'39"E
44	48°49'47"	50.00'	42.61'	22.70'	41.33'	N77°28'12"E
45A	01°11'03"	1397.25'	28.89'	14.44'	28.88'	S69°31'11"E
45B	42°47'50"	50.00'	37.35'	19.59'	36.49'	S47°31'45"E
45C	51°59'05"	50.00'	45.37'	24.38'	43.83'	S52°07'22"E
46	01°07'14"	1397.25'	100.49'	50.27'	100.47'	N72°10'20"E
47	08°08'03"	1397.25'	100.82'	50.43'	100.80'	S76°17'58"W
50	01°55'58"	1475.00'	49.83'	24.92'	49.83'	S79°20'04"E
51	03°43'57"	1475.00'	102.95'	51.50'	102.93'	S82°18'07"E
52	04°11'20"	1475.00'	107.84'	53.94'	107.81'	S86°23'45"E

OPEN SPACE CURVE DATA

OPEN SPACE/CURVE DELTA	RADIUS	LENGTH	TANGENT	CHORD	CHORD BEARING	
2C	09°38'56"	1677.64'	282.52'	141.60'	282.19'	N87°31'28"W
2D	08°02'54"	25.00'	38.42'	24.16'	34.75'	S53°16'33"W
3A	61°12'27"	50.00'	53.41'	29.57'	50.94'	N65°29'31"E
3B	19°44'19"	1025.96'	353.41'	178.47'	351.67'	S87°25'51"W
3C	31°57'06"	25.00'	40.12'	25.87'	35.95'	N36°43'27"W
3E	31°35'31"	25.00'	37.35'	23.15'	33.97'	N43°48'19"E
4B	01°02'59"	787.08'	14.42'	7.21'	14.42'	N87°07'34"E
4C	09°38'56"	1587.64'	269.05'	134.84'	268.73'	S87°31'28"E
4D	91°57'06"	25.00'	40.12'	25.87'	35.95'	S36°43'27"E
5A	88°02'54"	25.00'	38.42'	24.16'	34.75'	N53°16'33"E
5B	04°01'35"	1105.16'	77.71'	38.87'	77.70'	S84°42'47"E

MAJOR OPEN SPACE CURVE DATA

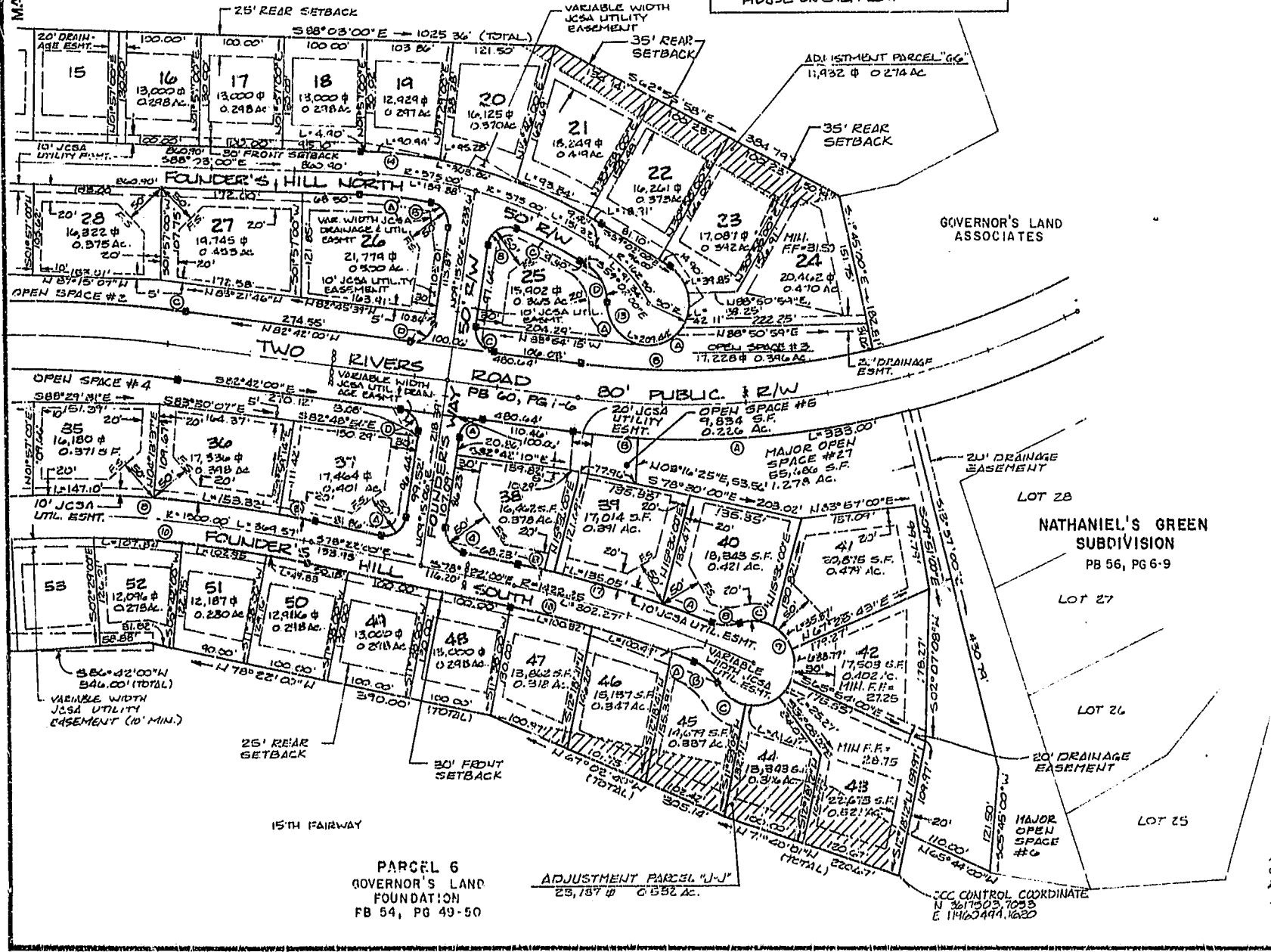
MAJOR OPEN SPACE/CURVE DELTA	RADIUS	LENGTH	TANGENT	CHORD	CHORD BEARING	
27A	17°15'10"	1105.86'	333.00'	167.77'	331.74'	N84°08'50"E

RIGHT-OF-WAY CURVE DATA

CURVE DELTA	RADIUS	LENGTH	TANGENT	CHORD	CHORD BEARING	
8	14°07'00"	1525.00'	375.74'	188.82'	374.78'	S85°25'30"E
9	262°47'03"	50.00'	229.32'	---	75.02'	S22°28'39"W
10	14°07'00"	1475.00'	363.41'	182.63'	362.50'	N85°25'30"W
13	240°00'00"	50.00'	209.44'	---	86.60'	N60°58'00"E
14	29°01'00"	600.00'	303.86'	155.26'	300.63'	N73°32'30"W
17	09°34'47"	1447.25'	241.98'	121.27'	241.70'	S73°34'36"E
18	09°26'20"	1397.25'	230.19'	115.35'	229.93'	N73°38'50"W

NOTE: VDOT IS NOT LIABLE
OR RESPONSIBLE FOR
DETENTION PONDS OR
ITS STRUCTURES.

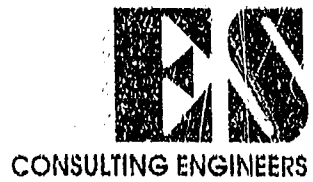
1:43 PM
[Handwritten signatures and dates]



PARCEL 6
GOVERNOR'S LAND
FOUNDATION
PB 54, PG 49-50

ADJUSTMENT PARCEL "J-J"
23,157 S.F. 0.532 AC.

CC CONTROL COORDINATE
N 301180.23, 705.3
E 1146049.1, 1620



5248 Olde Towne Road, Suite 1
Williamsburg, Virginia 23188
(804) 253-0040
Fax (804) 220-8994

PLAT OF
FOUNDER'S HILL
THE
GOVERNOR'S LAND
At Two Rivers
POWhatan DISTRICT JAMES CITY COUNTY VIRGINIA



No.	DATE	REVISION	COMMENT	NOTE	BY

Designed	Drawn
VMB	AES
Date	Date
11/11/95	6/95
Scale	1" = 100'
Project No.	7173
Drawing No.	4 of 4