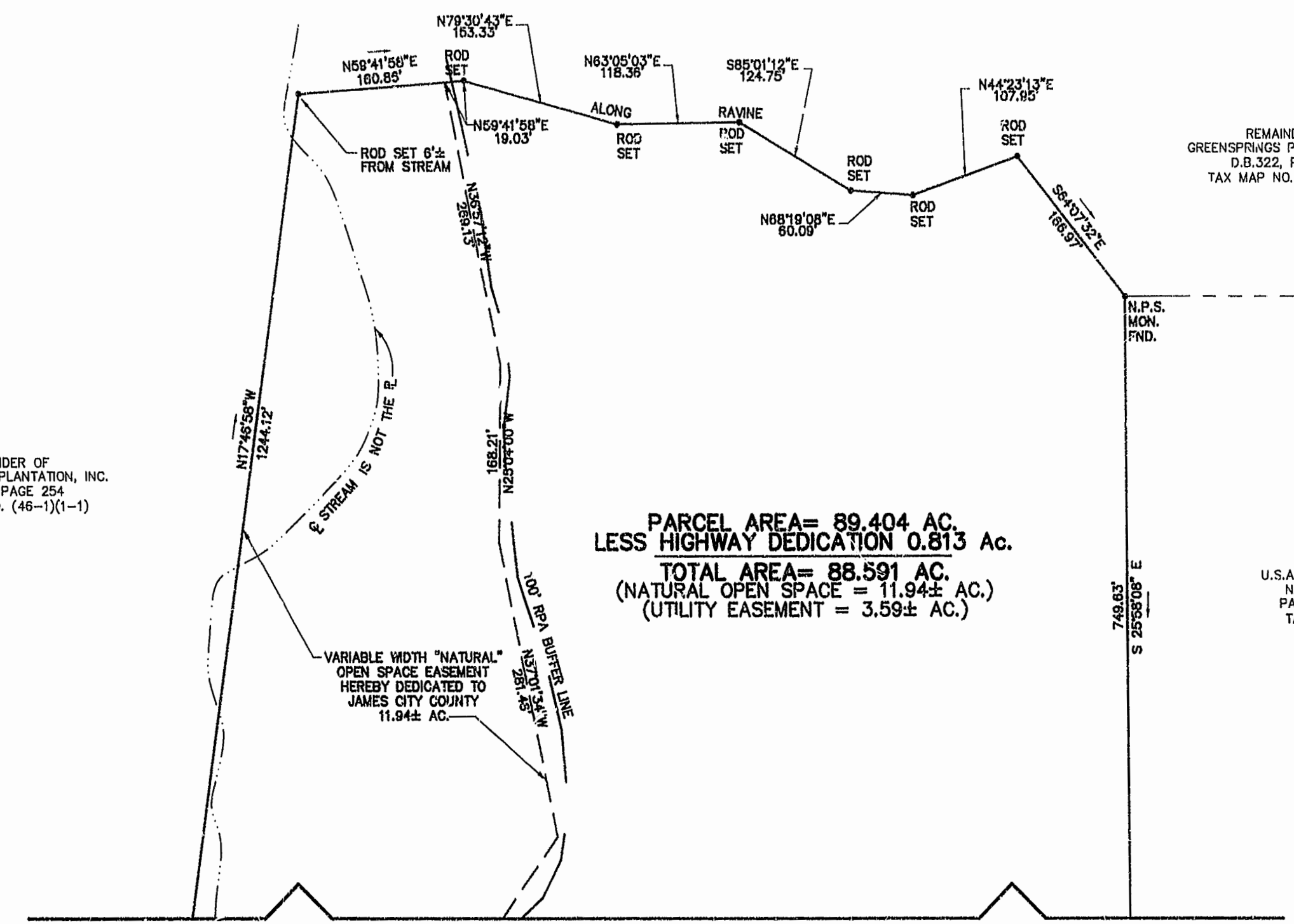


REMAINDER OF
GREENSPRINGS PLANTATION, INC.
D.B.322, PAGE 254
TAX MAP NO. (46-1)(1-1)

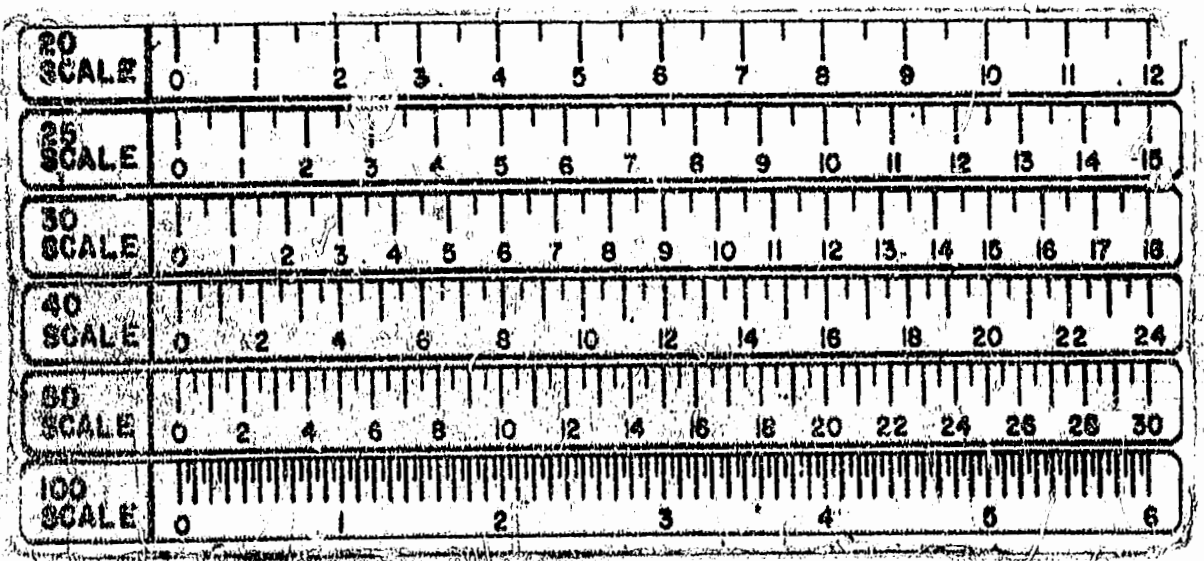


PARCEL AREA= 89.404 AC.
LESS HIGHWAY DEDICATION 0.813 Ac.
TOTAL AREA= 88.591 AC.
(NATURAL OPEN SPACE = 11.94± AC.)
(UTILITY EASEMENT = 3.59± AC.)

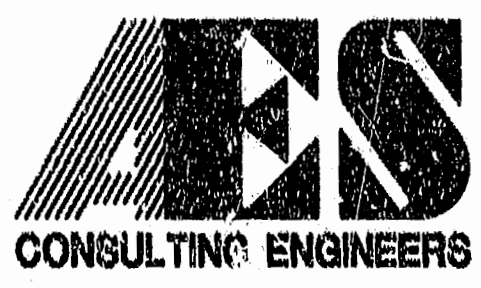
REMAINDER OF
GREENSPRINGS PLANTATION, INC.
D.B.322, PAGE 254
TAX MAP NO. (46-1)(1-1)

U.S.A. GREENSPRINGS PLANTATION
NATIONAL HISTORICAL SITE
PART OF D.B.181, PAGE 533
TAX MAP NO. (45-2)(1-1)

MATCH LINE - SEE SHEET 2 OF 3



1:14 PM
Recorded 14th day of July 1991
D.B. No. 745 pages 525
Robert M. ... Clerk



5248 Old Towne Road, Suite 1
Williamsburg, Virginia 23186
(804) 253-0040
Fax (804) 220-8004

PLAT
SHOWING VARIOUS EASEMENTS
AND DEDICATIONS
PATRIOTS COLONY, PHASE I
BERKELEY DISTRICT JAMES CITY COUNTY VIRGINIA



No.	DATE	REVISION / COMMENT / NOTE	BY
1	5/21/95	REVISED SIGN. BLOCKS & ADDED JCO COORD. REF.	GAH
1	5/22/95	REVISED OPEN SPACE EASEMENT PER DEVELOPER	GAH

Designed	Drawn
Scale	Date
1"=100'	3/13/95
Project No.	
7793	
Drawing No.	
3 of 3	