

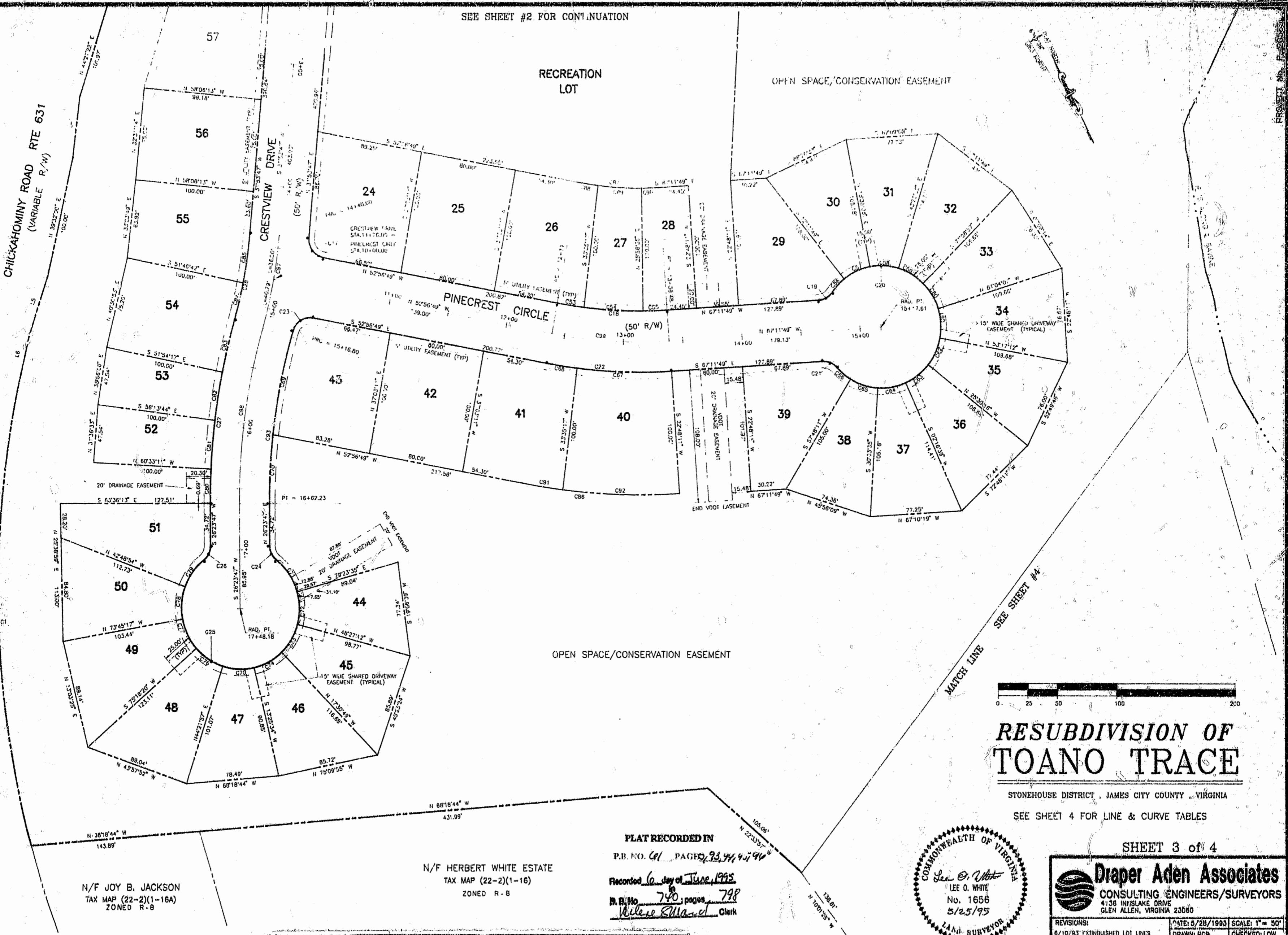
SEE SHEET #2 FOR CONTINUATION

CHICKAHOMINY ROAD RTE 631
(VARIABLE R/W)

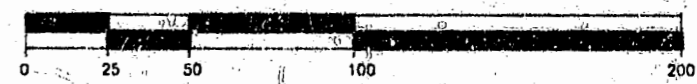
CRESTVIEW DRIVE

RECREATION LOT

OPEN SPACE/CONSERVATION EASEMENT



OPEN SPACE/CONSERVATION EASEMENT



RESUBDIVISION OF TOANO TRACE

STONEHOUSE DISTRICT, JAMES CITY COUNTY, VIRGINIA

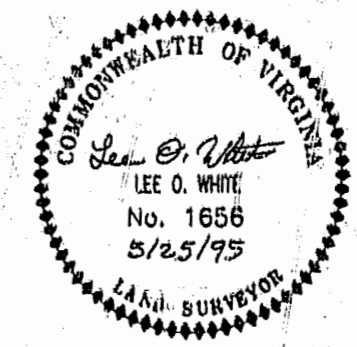
SEE SHEET 4 FOR LINE & CURVE TABLES

SHEET 3 of 4

N/F JOY B. JACKSON
TAX MAP (22-2)(1-16A)
ZONED R-8

N/F HERBERT WHITE ESTATE
TAX MAP (22-2)(1-16)
ZONED R-8

PLAT RECORDED IN
P.B. NO. 61 PAGES 73, 94, 95, 96
Recorded 6th day of June, 1995
B. B. No. 740 pages 798
Walter E. Randal Clerk



Draper Aden Associates
CONSULTING ENGINEERS/SURVEYORS
4138 HINSLAKE DRIVE
GLEN ALLEN, VIRGINIA 23060

REVISIONS:
8/10/93 EXTINGUISHED LOT LINES
9/25/95 ROAD C/L'S

DATE: 6/28/1993 SCALE: 1" = 50'
DRAWN: PCB CHECKED: LOW
PROJECT No. P-20585

