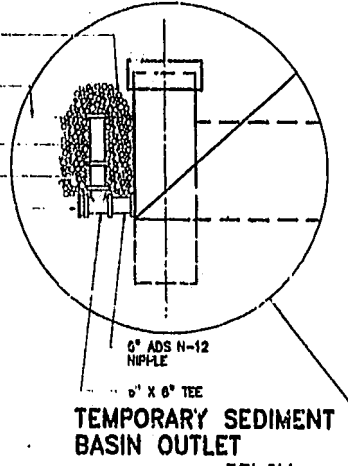
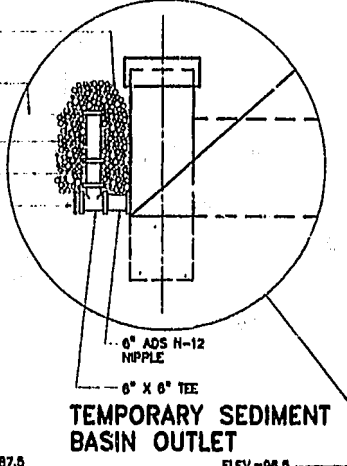


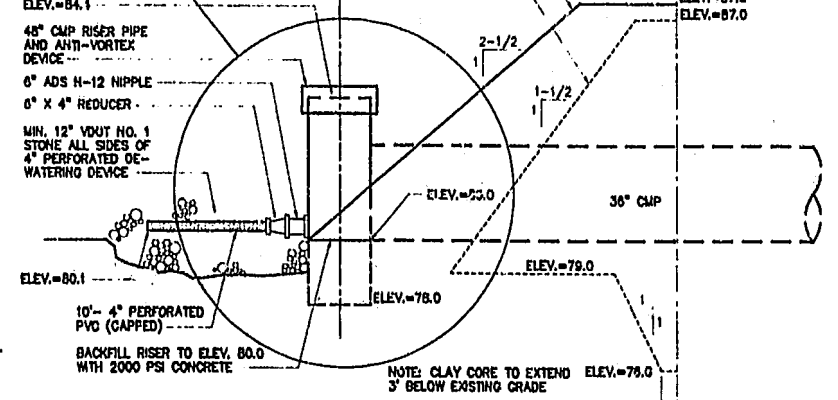
OFFSITE DRAINAGE CHANNEL



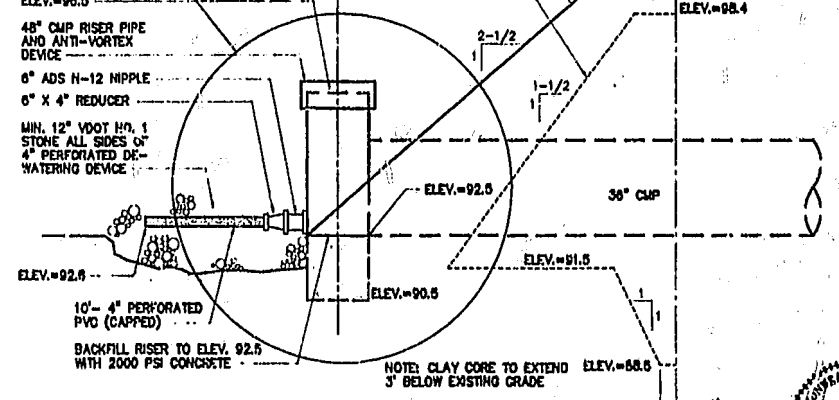
TEMPORARY SEDIMENT BASIN OUTLET



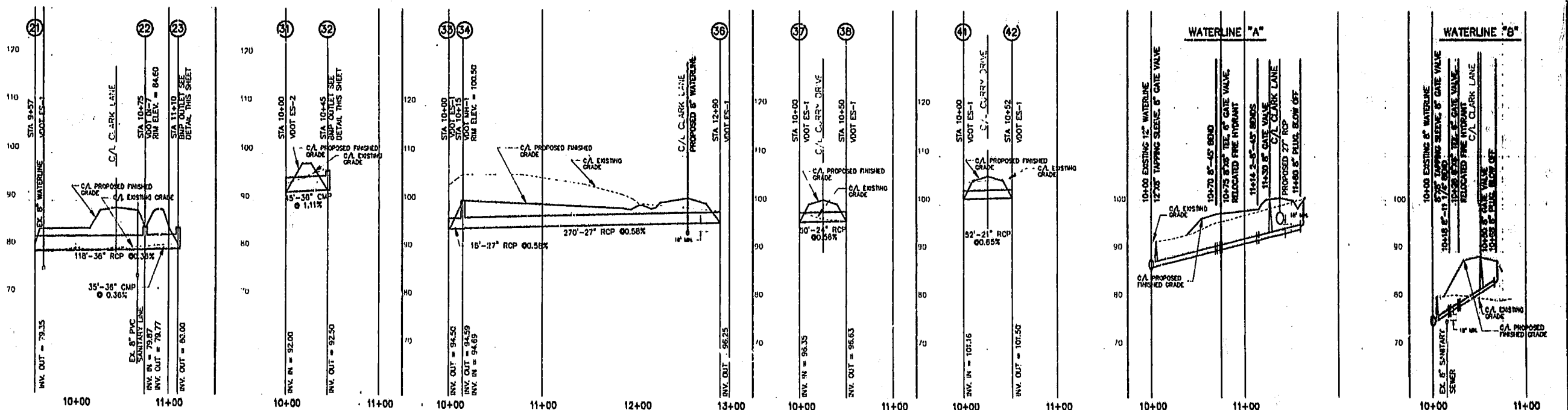
TEMPORARY SEDIMENT BASIN OUTLET



PERMANENT BMP A OUTLET  
NOT TO SCALE



PERMANENT BMP B OUTLET  
NOT TO SCALE



**Draper Aden Associates**  
CONSULTING ENGINEERS  
BLACKSBURG, VIRGINIA - RICHMOND, VIRGINIA - NASHVILLE, TENNESSEE

DESIGNED: QVS  
DRAWN: OFD  
CHECKED: SPH  
DATE: 8-1-94

**STORM SEWER AND WATERLINE PROFILES AND BMP DETAILS**  
MOORETOWN ROAD NEIGHBORHOOD IMPROVEMENTS  
JAMES CITY COUNTY, VIRGINIA

Recorded *2/17/11* by *...*  
D.B. No. *737* 3/20/08  
*Wilbur Smith* Clerk

REVISIONS:  
8-18-94 PER COUNTY COMMENT  
11-16-94 PER COUNTY COMMENT  
12-8-94 PER COUNTY COMMENT

SCALE: HORIZ. 1"=50' VERT. 1"=10'

PLAN NO. T-21086

SHEET 6 OF 7