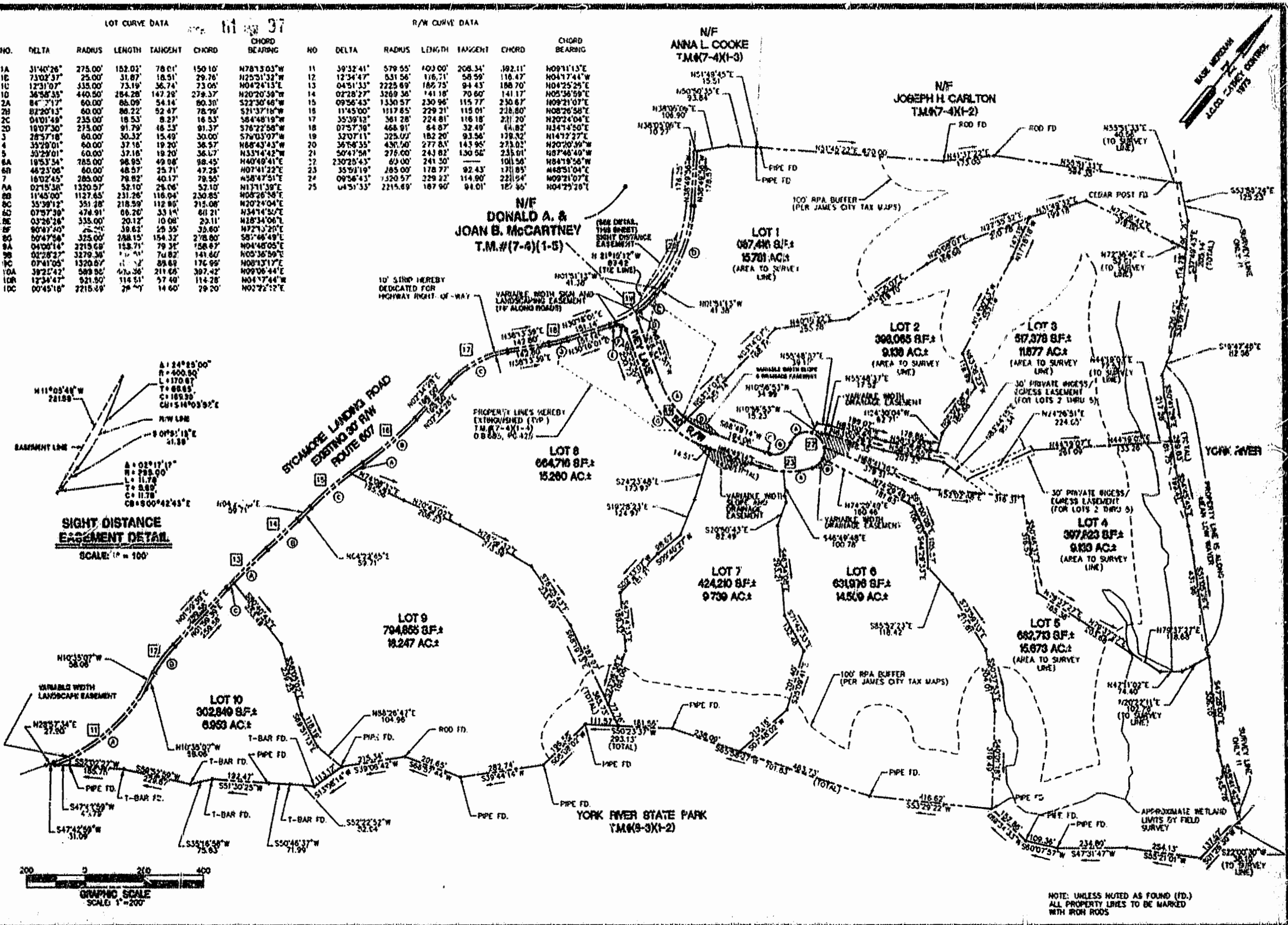


LOT CURVE DATA

NO.	DELTA	RADIUS	LENGTH	TANGENT	CHORD	CHORD BEARING
1A	31°40'26"	275.00'	152.02'	78.01'	150.10'	N78°13'03"W
1B	73°02'37"	25.00'	31.87'	18.51'	29.70'	N25°31'32"W
1C	12°31'07"	335.00'	73.19'	36.74'	73.06'	N04°24'13"E
1D	36°58'55"	440.50'	284.28'	147.28'	278.37'	N20°20'38"W
2A	84°27'17"	60.00'	68.09'	54.14'	80.31'	S22°30'48"W
2B	82°20'13"	60.00'	88.22'	52.47'	78.78'	S21°37'16"W
2C	04°01'49"	235.00'	18.53'	8.27'	18.53'	S84°48'19"W
2D	19°07'30"	275.00'	91.79'	46.25'	91.37'	S78°22'58"W
3	28°57'18"	60.00'	30.32'	15.49'	30.00'	S79°03'07"W
4	35°29'01"	60.00'	37.16'	19.20'	36.57'	N68°43'43"W
5	30°29'01"	60.00'	37.16'	19.20'	36.57'	N33°44'42"E
6A	19°53'34"	285.00'	98.95'	49.08'	98.45'	N40°40'41"E
6B	48°23'06"	60.00'	48.57'	25.71'	47.28'	N07°41'22"E
7	18°02'45"	285.00'	79.82'	40.17'	79.55'	N58°47'51"E
8A	02°15'38"	1320.57'	52.10'	28.06'	52.10'	N11°11'39"E
8B	11°45'00"	1127.65'	231.26'	116.94'	230.85'	N05°26'58"E
8C	35°39'12"	351.28'	218.59'	112.80'	218.08'	N20°24'04"E
8D	07°57'39"	474.91'	68.20'	33.14'	68.21'	N34°14'50"E
8E	03°26'28"	335.00'	20.12'	10.08'	20.11'	N18°34'08"E
8F	80°47'40"	25.00'	38.82'	23.55'	39.80'	N72°13'20"E
8G	00°47'58"	325.00'	288.15'	154.32'	278.80'	S87°48'49"E
8H	04°00'14"	2215.68'	158.71'	79.35'	158.67'	N04°48'05"E
8I	01°28'27"	3279.38'	74.82'	37.82'	74.82'	N03°36'59"E
8J	07°41'05"	1320.57'	11.52'	5.81'	11.52'	N08°13'17"E
8K	39°23'42"	589.86'	415.36'	211.68'	397.42'	N09°06'44"E
8L	17°34'47"	521.50'	114.51'	57.40'	114.28'	N04°17'44"W
8M	00°45'18"	2215.68'	29.44'	14.60'	29.20'	N02°22'32"E

R/W CURVE DATA

NO.	DELTA	RADIUS	LENGTH	TANGENT	CHORD	CHORD BEARING
11	39°32'41"	579.55'	103.00'	208.34'	182.11'	N09°11'15"E
12	12°34'47"	531.56'	116.71'	58.59'	116.47'	N04°17'44"W
13	04°51'33"	2225.89'	182.75'	94.43'	188.70'	N04°25'25"E
14	07°28'27"	3269.36'	141.18'	70.60'	141.17'	N05°36'58"E
15	09°56'43"	1330.57'	230.96'	115.77'	230.67'	N09°21'07"E
16	11°45'00"	1117.85'	229.21'	115.01'	228.80'	N08°26'58"E
17	35°39'12"	381.28'	224.81'	116.18'	211.20'	N20°24'04"E
18	07°57'39"	468.91'	84.87'	32.49'	84.82'	N34°14'50"E
19	32°07'11"	325.00'	182.20'	93.56'	178.32'	N14°17'27"E
20	36°58'55"	430.50'	277.84'	143.95'	273.02'	N20°20'38"W
21	50°47'58"	276.00'	243.82'	130.58'	235.01'	N07°48'40"W
22	23°02'43"	60.00'	241.30'	101.56'	101.56'	N84°19'56"W
23	35°29'12"	285.00'	243.82'	130.58'	235.01'	N07°48'40"W
24	09°56'43"	1320.57'	229.21'	114.90'	223.54'	N09°21'07"E
25	04°51'33"	2215.68'	187.90'	94.01'	187.96'	N04°25'25"E



SIGHT DISTANCE EASEMENT DETAIL
SCALE: 1" = 100'

NOTE: UNLESS NOTED AS FOUND (FD.) ALL PROPERTY LINES TO BE MARKED WITH IRON RODS



6243 Old Towne Blvd, Suite 1
Williamsburg, Virginia 23188
(800) 263-0010
Fax (564) 220-8964

PLAT OF SUBDIVISION
& PROPERTY LINE EXTINGUISHMENT
IVEY DELL
OWNER / DEVELOPER: STONEHOUSE, INC.
STONEHOUSE DISTRICT JAMES CITY COUNTY VIRGINIA



Prepared	Drawn
Date	Date
1"=200'	10/20/04
Project No.	5894
Sheet No.	1 of 2

Prepared	Drawn
Date	Date
1"=200'	10/20/04
Project No.	5894
Sheet No.	1 of 2