

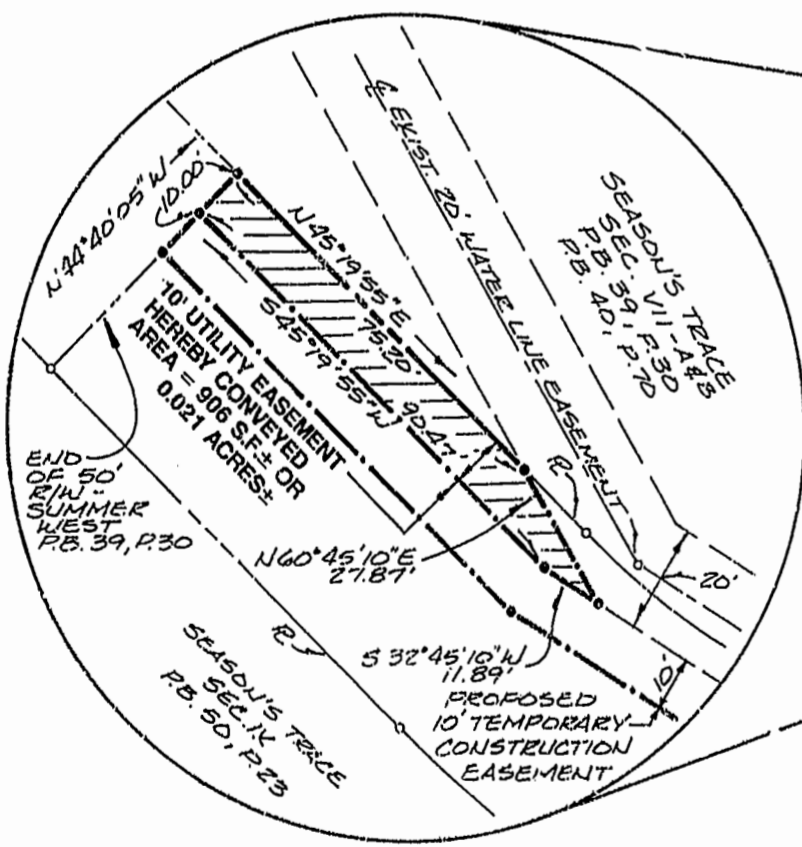
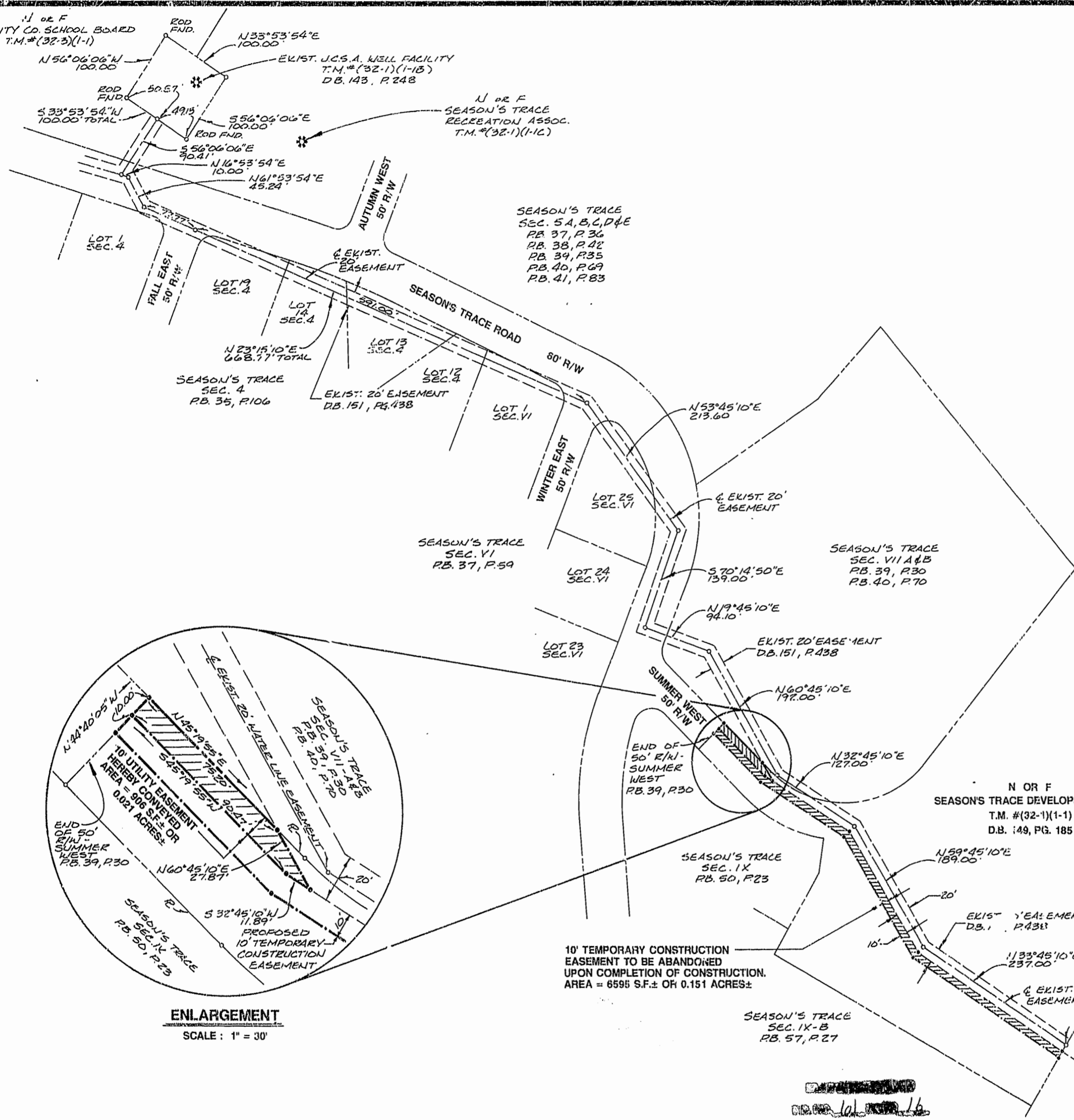
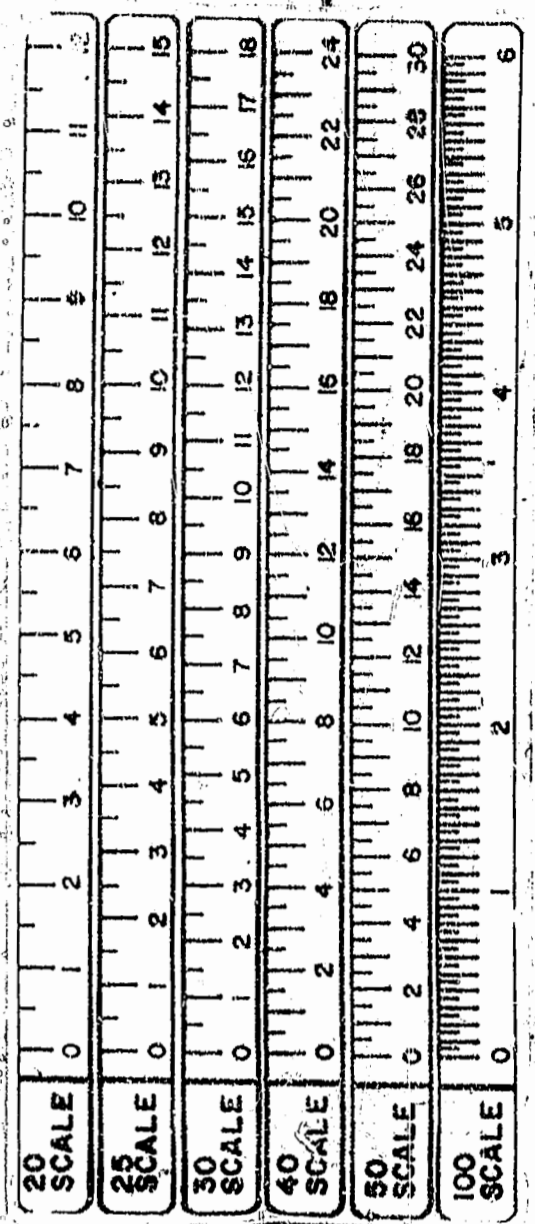
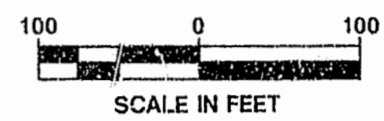
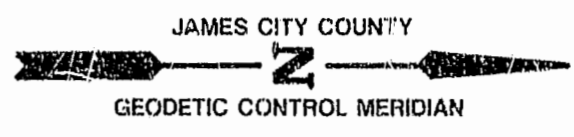
N OR F
JAMES CITY CO. SCHOOL BOARD
T.M.#(32-3)(1-1)

ROD FND.
N33°53'54"E
100.00'

EXIST. J.C.S.A. WELL FACILITY
T.M.#(32-1)(1-1B)
D.B. 143, P. 242

N OR F
SEASON'S TRACE
RECREATION ASSOC.
T.M.#(32-1)(1-1C)

SEASON'S TRACE
SEC. 5A, B, C, D & E
P.B. 37, P. 36
P.B. 38, P. 42
P.B. 39, P. 35
P.B. 40, P. 69
P.B. 41, P. 83



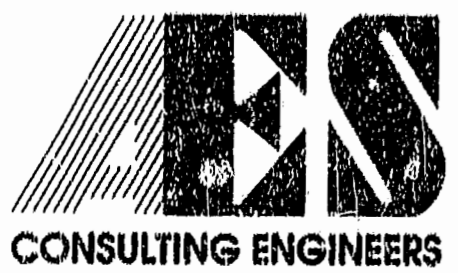
ENLARGEMENT
SCALE: 1" = 30'

10' TEMPORARY CONSTRUCTION
EASEMENT TO BE ABANDONED
UPON COMPLETION OF CONSTRUCTION.
AREA = 6595 S.F. ± OR 0.151 ACRES ±

N OR F
SEASON'S TRACE DEVELOPMENT, INC.
T.M.#(32-1)(1-1)
D.B. 149, PG. 185

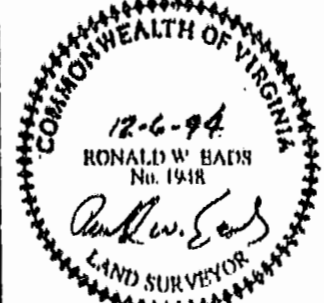
N OR F
TMB SERVICE CORP.
T.M.#(32-2)(1-57)
"NARHILL" TRACT

10:53 AM
Recorded
D.B. No. 729
579



5248 Old Towne Road, Suite 1
Williamsburg, Virginia 23188
(804) 253-0040
Fax (804) 220-8994

PLAT SHOWING
10' UTILITY EASEMENT &
10' TEMPORARY CONSTRUCTION EASEMENT
FOR CONVEYANCE
TO: JAMES CITY SERVICE AUTHORITY
FROM: SEASON'S TRACE DEVELOPMENT, INC.
POWATAN DISTRICT JAMES CITY COUNTY VIRGINIA



No.	DATE	REVISION / COMMENT / NOTE	BY

Designed	Drawn
Scale 1" = 100'	Date 12/6/94
Project No. 7806-8	
Drawing No. 1 OF 1	