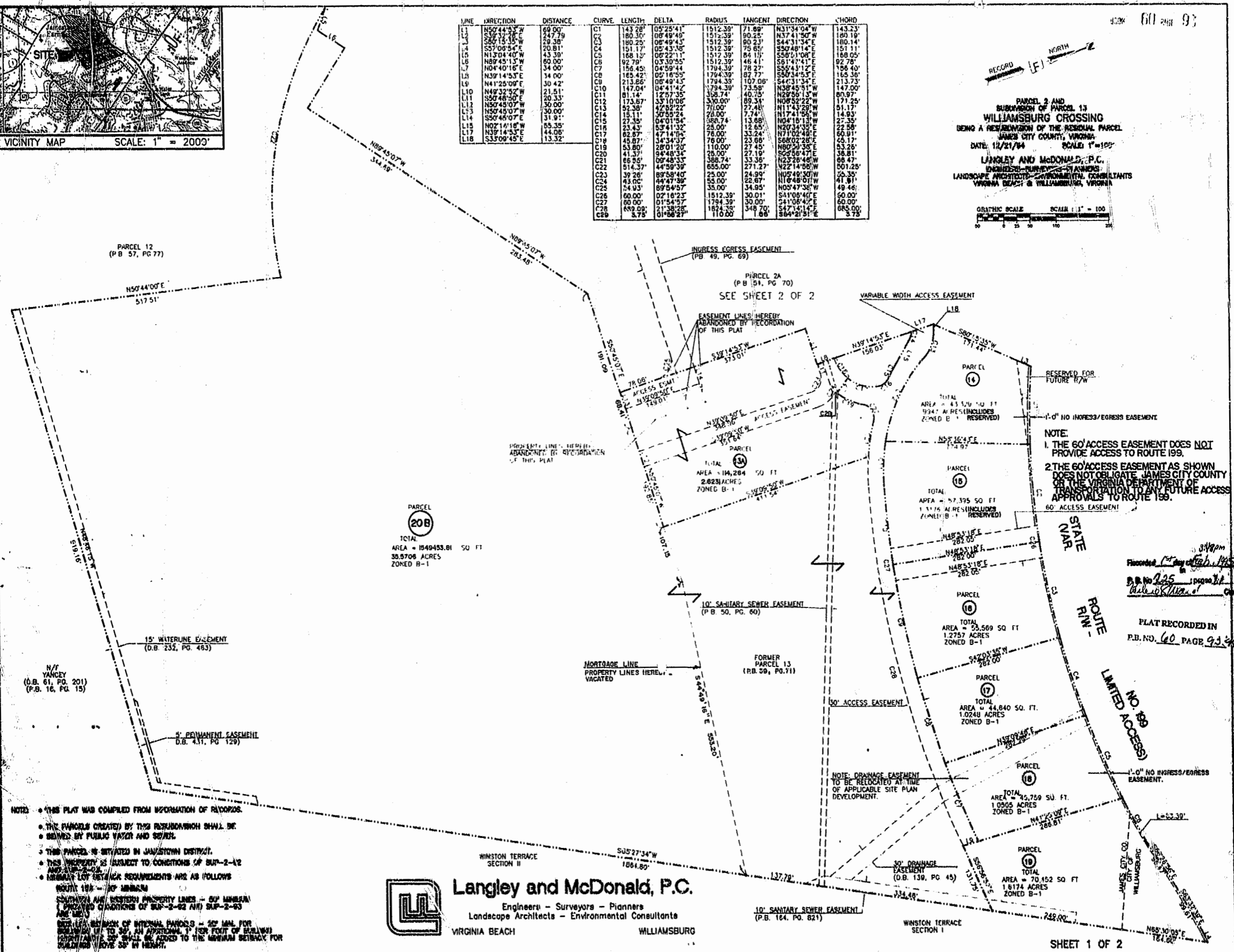
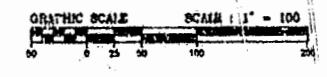


LINE	DIRECTION	DISTANCE	CURVE	LENGTH	DELTA	RADIUS	TANGENT	DIRECTION	CHORD
L1	N50°44'52"W	69.00'	C1	143.28'	08°25'41"	1512.39'	71.89'	N31°34'04"W	143.23'
L2	S39°32'16"E	147.79'	C2	180.30'	08°49'40"	1512.39'	80.25'	N37°41'50"W	180.18'
L3	S57°00'54"E	20.81'	C3	180.25'	08°49'43"	1512.39'	80.23'	S44°31'34"E	180.14'
L4	N13°04'40"W	43.39'	C4	151.17'	02°43'36"	1512.39'	75.65'	S50°48'14"E	151.11'
L5	N89°45'13"W	60.00'	C5	168.13'	00°22'11"	1512.39'	84.11'	S56°01'08"E	168.05'
L6	N04°40'16"E	34.00'	C6	92.79'	03°30'55"	1512.39'	46.41'	S61°41'41"E	92.78'
L7	N39°14'53"E	34.00'	C7	156.45'	04°59'44"	1794.39'	78.27'	S55°43'12"E	156.40'
L8	N41°25'09"E	30.42'	C8	213.26'	02°18'55"	1794.39'	87.77'	S50°34'53"E	165.36'
L9	N49°32'52"W	21.51'	C9	147.04'	04°41'42"	1794.39'	73.58'	N38°45'51"W	147.00'
L10	S50°48'00"E	20.33'	C10	81.14'	12°57'35"	308.74'	40.75'	N29°56'13"W	80.97'
L11	N50°45'07"W	30.00'	C11	173.87'	33°10'06"	300.00'	89.31'	N09°52'22"W	171.25'
L12	S50°46'07"E	31.91'	C12	52.38'	47°32'22"	71.00'	27.48'	N11°43'29"W	51.17'
L13	N02°16'18"E	55.35'	C13	15.11'	30°55'24"	29.00'	7.74'	N17°41'59"W	14.83'
L14	N39°14'53"E	44.06'	C14	27.35'	04°01'54"	380.74'	13.68'	N04°18'11"W	25.35'
L15	S33°09'45"E	13.32'	C15	23.43'	53°41'32"	25.00'	12.65'	N20°34'39"E	22.56'
L16			C16	82.87'	47°14'05"	76.00'	33.24'	N71°02'48"E	60.81'
L17			C17	45.87'	34°34'37"	76.00'	23.68'	S68°02'28"E	45.17'
L18			C18	53.80'	28°01'20"	110.00'	27.45'	N80°20'36"E	53.25'
L19			C19	41.37'	94°48'34"	28.00'	27.19'	S25°56'47"E	38.81'
L20			C20	66.59'	00°48'33"	388.74'	33.36'	N23°28'48"W	66.47'
L21			C21	514.37'	4°59'39"	655.00'	271.27'	N27°14'58"W	601.25'
L22			C22	39.78'	89°59'40"	25.00'	24.99'	N05°40'50"W	39.35'
L23			C23	43.06'	44°47'39"	53.00'	22.67'	N10°48'01"W	41.81'
L24			C24	24.93'	89°54'57"	35.00'	34.95'	N09°47'38"W	49.48'
L25			C25	60.00'	02°16'23"	1512.39'	30.01'	S41°08'40"E	60.00'
L26			C26	60.00'	01°54'57"	1794.39'	30.00'	S41°08'42"E	60.00'
L27			C27	692.09'	21°38'28"	1824.39'	348.70'	S47°14'14"E	685.00'
L28			C28	5.75'	01°06'27"	110.00'	1.66'	S64°21'51"E	5.75'

PARCEL 2 AND SUBDIVISION OF PARCEL 13 WILLIAMSBURG CROSSING BEING A REZONING OF THE RESIDUAL PARCEL JAMES CITY COUNTY, VIRGINIA DATE: 11/21/94 SCALE: 1"=100'

LANGLEY AND McDONALD, P.C. ENGINEERS - SURVEYORS - PLANNERS LANDSCAPE ARCHITECTS - ENVIRONMENTAL CONSULTANTS VIRGINIA BEACH & WILLIAMSBURG, VIRGINIA



NOTE:  
 1. THE 60' ACCESS EASEMENT DOES NOT PROVIDE ACCESS TO ROUTE 199.  
 2. THE 60' ACCESS EASEMENT AS SHOWN DOES NOT OBLIGATE JAMES CITY COUNTY OR THE VIRGINIA DEPARTMENT OF TRANSPORTATION TO ANY FUTURE ACCESS APPROVALS TO ROUTE 199.

Recorded 11/21/94  
 P.B. No. 60 Page 93  
 Date 11/21/94

PLAT RECORDED IN P.B. NO. 60 PAGE 93

NO. 199 LIMITED ACCESS

NOTE: THIS PLAT WAS COMPILED FROM INFORMATION OF RECORDS.  
 • THE PARCELS CREATED BY THIS REZONING SHALL BE BOUND BY FILING WATER AND SEWER.  
 • THIS PARCEL IS SITUATED IN JAMES CITY COUNTY.  
 • THIS PROPERTY IS SUBJECT TO CONDITIONS OF SUP-2-82 AND SUP-2-83.  
 • MINIMUM LOT SETBACK REQUIREMENTS ARE AS FOLLOWS:  
 ROUTE 199 - 20' MINIMUM  
 SOUTH AND WESTERN PROPERTY LINES - 50' MINIMUM (PROVIDED CONDITIONS OF SUP-2-82 AND SUP-2-83 ARE MET)  
 SETBACK BETWEEN INTERNAL PARCELS - 10' MIN. FOR PARCELS UP TO 30' AN APPROX. 1' PER FOOT OF BUILDING HEIGHT. SETBACK SHALL BE ADDED TO THE MINIMUM SETBACK FOR BUILDINGS OVER 30' IN HEIGHT.

**Langley and McDonald, P.C.**  
 Engineers - Surveyors - Planners  
 Landscape Architects - Environmental Consultants  
 VIRGINIA BEACH WILLIAMSBURG