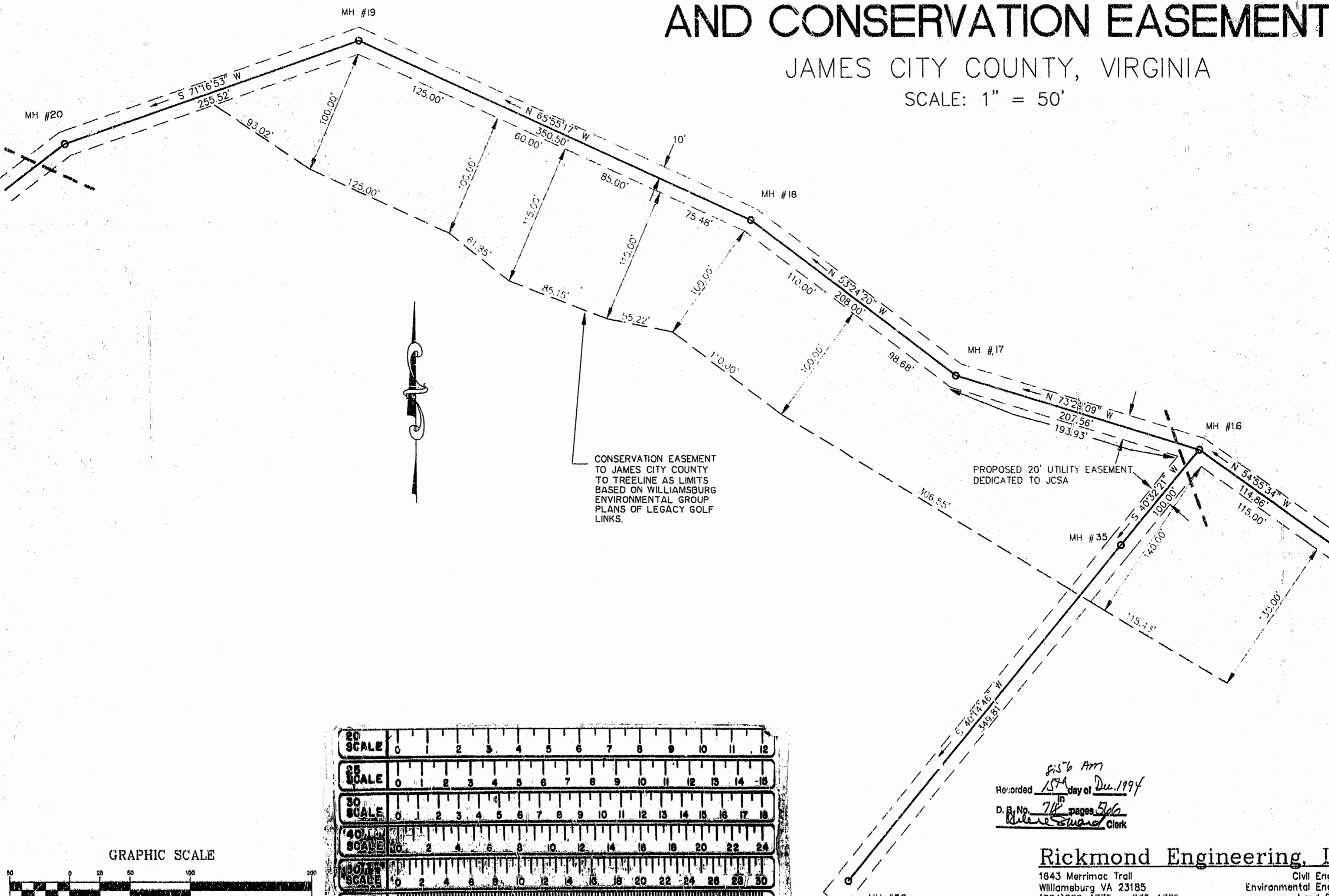


GREENSPRINGS PLANTATION SANITARY SEWER EASEMENT AND CONSERVATION EASEMENT

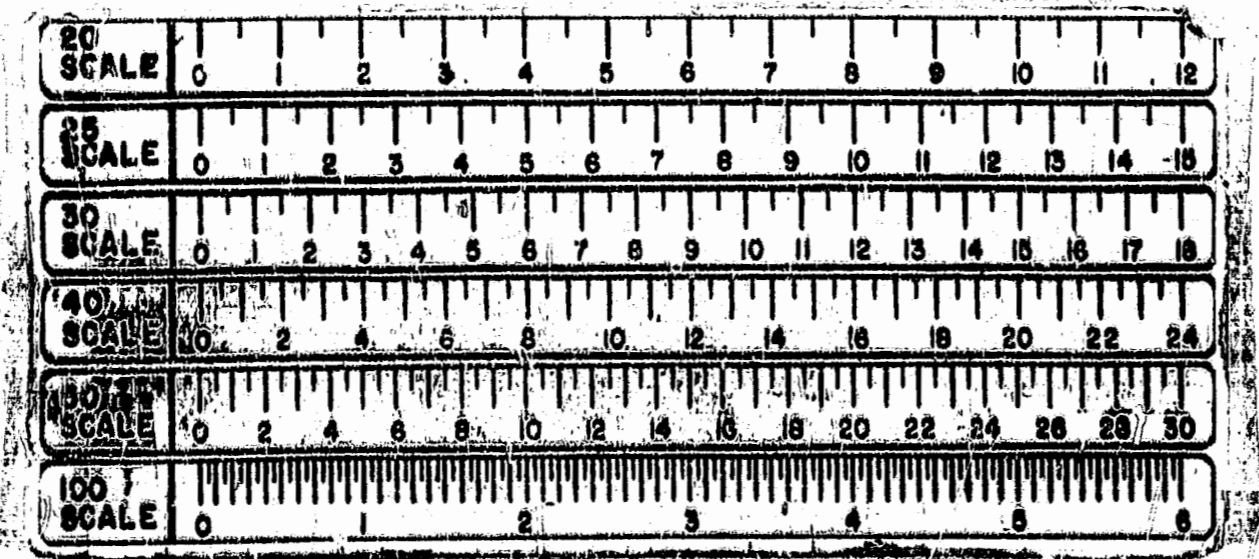
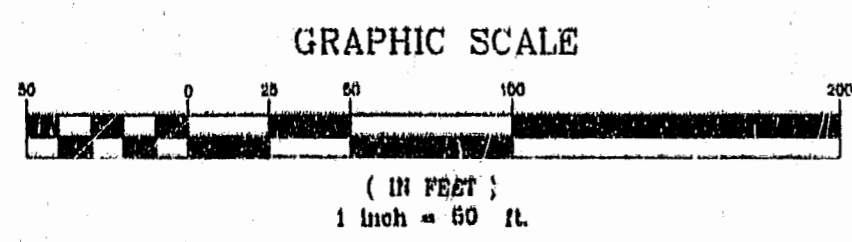
JAMES CITY COUNTY, VIRGINIA

SCALE: 1" = 50'

SEE SHEET C7 FOR CONTINUATION



SEE SHEET C5 FOR CONTINUATION



Recorded *8:56 AM*
13th day of *Dec.* 1994
D. B. No. *718* pages *566*
Richard Swann Clerk

Rickmond Engineering, Inc.
1643 Merrimac Trill
Williamsburg VA 23185
(804)229-1778 or 875-1785

Civil Engineering
Environmental Engineering
Land Surveying