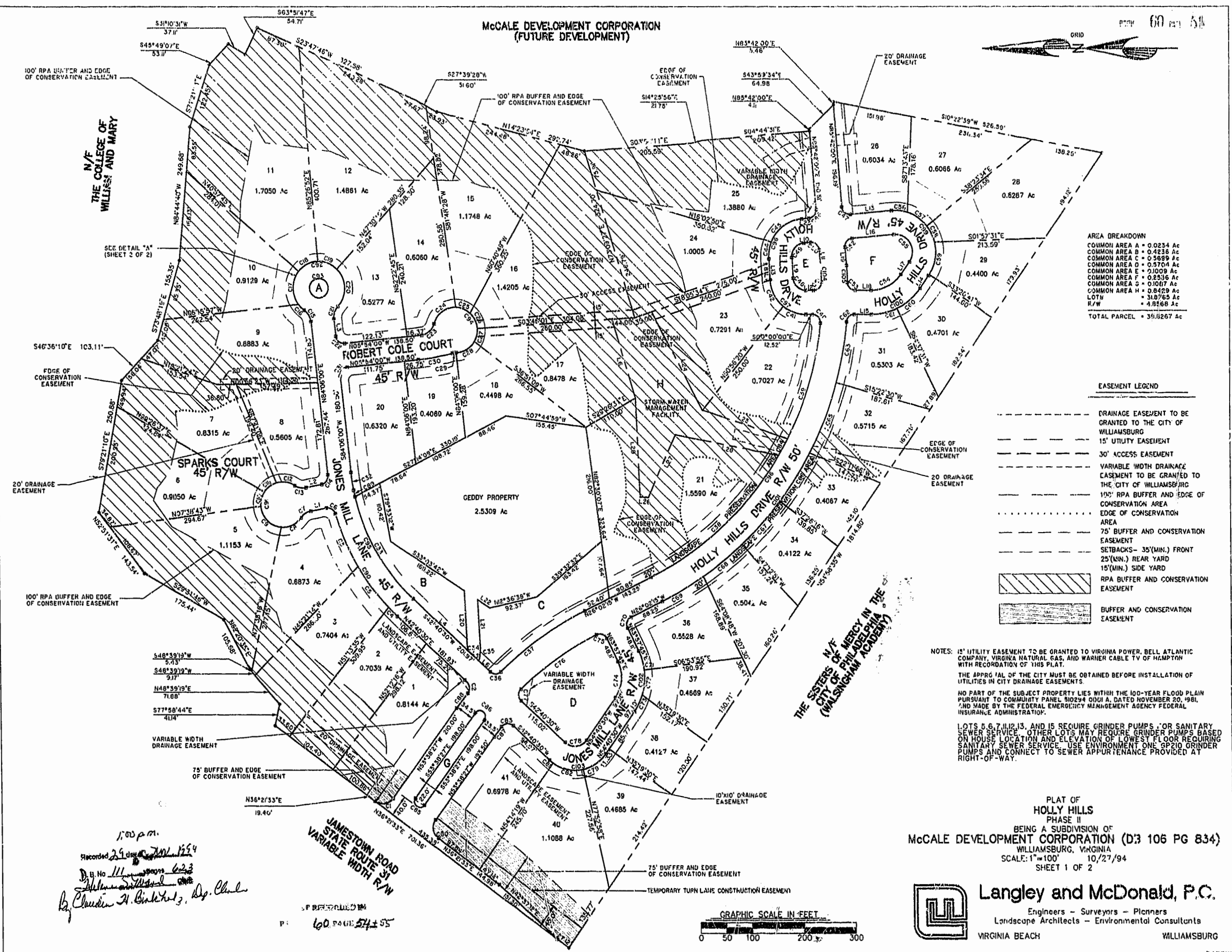
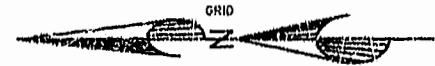


McCALE DEVELOPMENT CORPORATION
(FUTURE DEVELOPMENT)



AREA BREAKDOWN

COMMON AREA A	= 0.0234 Ac
COMMON AREA B	= 0.4236 Ac
COMMON AREA C	= 0.5689 Ac
COMMON AREA D	= 0.5704 Ac
COMMON AREA E	= 2.1009 Ac
COMMON AREA F	= 0.2535 Ac
COMMON AREA G	= 0.1017 Ac
COMMON AREA H	= 0.8429 Ac
LOT#	= 31.8765 Ac
R/W	= 4.8768 Ac
TOTAL PARCEL	= 31.8267 Ac

EASEMENT LEGEND

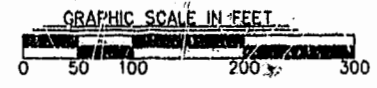
	DRAINAGE EASEMENT TO BE GRANTED TO THE CITY OF WILLIAMSBURG
	15' UTILITY EASEMENT
	30' ACCESS EASEMENT
	VARIABLE WIDTH DRAINAGE EASEMENT TO BE GRANTED TO THE CITY OF WILLIAMSBURG
	100' RPA BUFFER AND EDGE OF CONSERVATION AREA
	EDGE OF CONSERVATION AREA
	75' BUFFER AND CONSERVATION EASEMENT
	SETBACKS- 35'(MIN.) FRONT 25'(MIN.) REAR YARD 15'(MIN.) SIDE YARD
	RPA BUFFER AND CONSERVATION EASEMENT
	BUFFER AND CONSERVATION EASEMENT

NOTES: 15' UTILITY EASEMENT TO BE GRANTED TO VIRGINIA POWER, BELL ATLANTIC COMPANY, VIRGINIA NATURAL GAS, AND WARNER CABLE TV OF HAMPTON WITH RECORDATION OF THIS PLAT.
THE APPROVAL OF THE CITY MUST BE OBTAINED BEFORE INSTALLATION OF UTILITIES IN CITY DRAINAGE EASEMENTS.
NO PART OF THE SUBJECT PROPERTY LIES WITHIN THE 100-YEAR FLOOD PLAIN PURSUANT TO COMMUNITY PANEL #10294 DD1A, DATED NOVEMBER 20, 1981, AND MADE BY THE FEDERAL EMERGENCY MANAGEMENT AGENCY FEDERAL INSURANCE ADMINISTRATION.
LOTS 5, 6, 7, 11, 12, 13, AND 15 REQUIRE GRINDER PUMPS FOR SANITARY SEWER SERVICE. OTHER LOTS MAY REQUIRE GRINDER PUMPS BASED ON HOUSE LOCATION AND ELEVATION OF LOWEST FLOOR REQUIRING SANITARY SEWER SERVICE. USE ENVIRONMENT ONE SP210 GRINDER PUMPS AND CONNECT TO SEWER APPURTENANCE PROVIDED AT RIGHT-OF-WAY.

PLAT OF
HOLLY HILLS
PHASE II
BEING A SUBDIVISION OF
McCALE DEVELOPMENT CORPORATION (D3 106 PG 834)
WILLIAMSBURG, VIRGINIA
SCALE: 1"=100' 10/27/94
SHEET 1 OF 2



Langley and McDonald, P.C.
Engineers - Surveyors - Planners
Landscape Architects - Environmental Consultants
VIRGINIA BEACH WILLIAMSBURG



1:00 p.m.
Recorded 29 days 1254
D.B. No. 111 623
by *Chaudin H. Binkley, Jr., Dep. Clerk*

JAMESTOWN ROAD
STATE ROUTE 31
VARIABLE WIDTH R/W