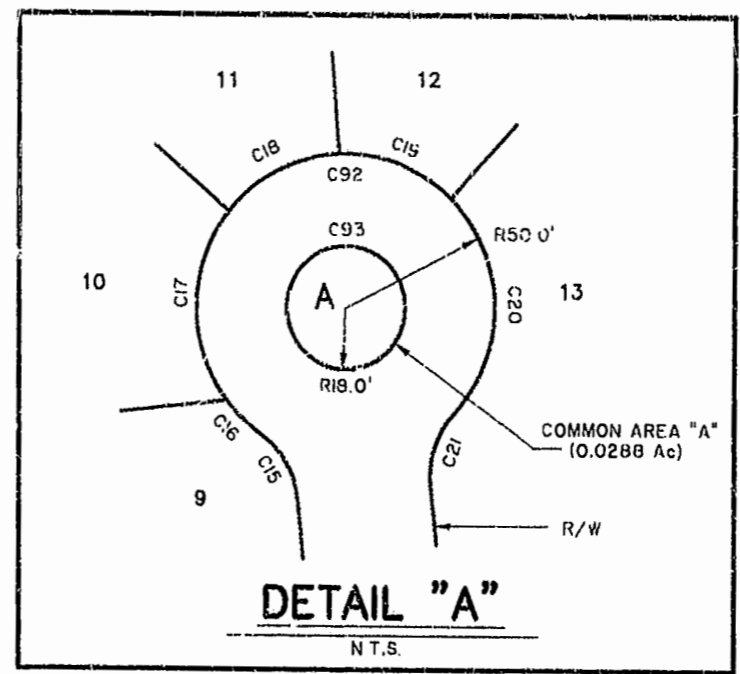
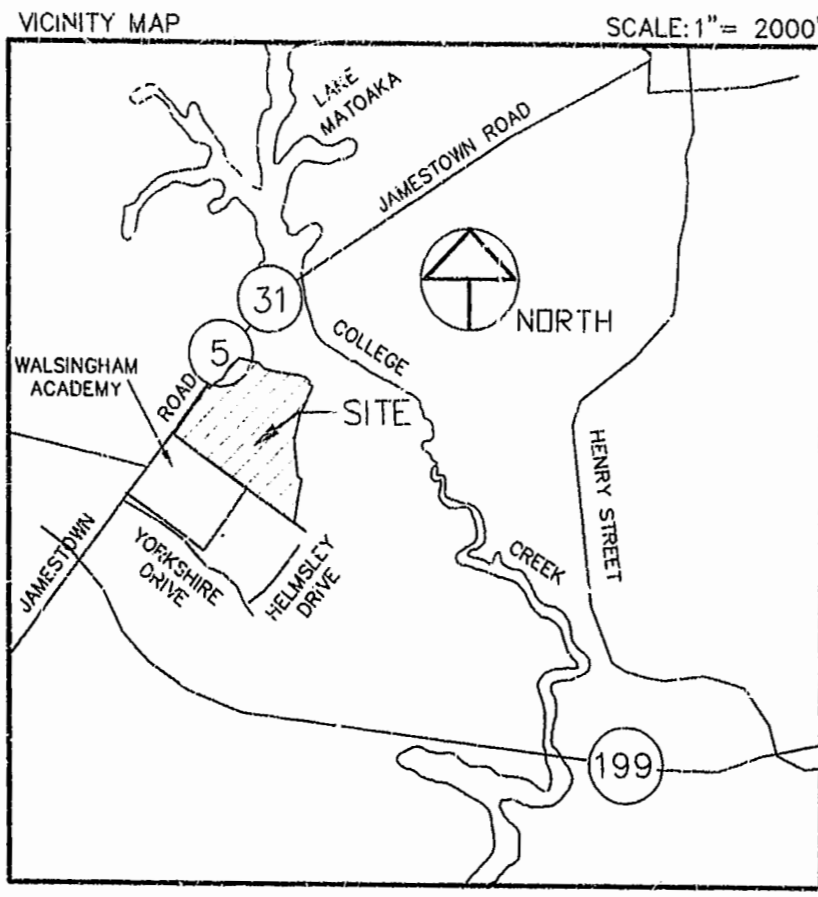




SURVEYOR'S CERTIFICATE  
 I HEREBY CERTIFY THAT TO THE BEST OF MY KNOWLEDGE AND BELIEF, ALL OF THE REQUIREMENTS OF THE APPLICABLE CODES AND REGULATIONS OF THE CITY OF WILLIAMSBURG, VIRGINIA, REGARDING THE PLATTING OF SUBDIVISIONS WITHIN THE CITY HAVE BEEN COMPLIED WITH.

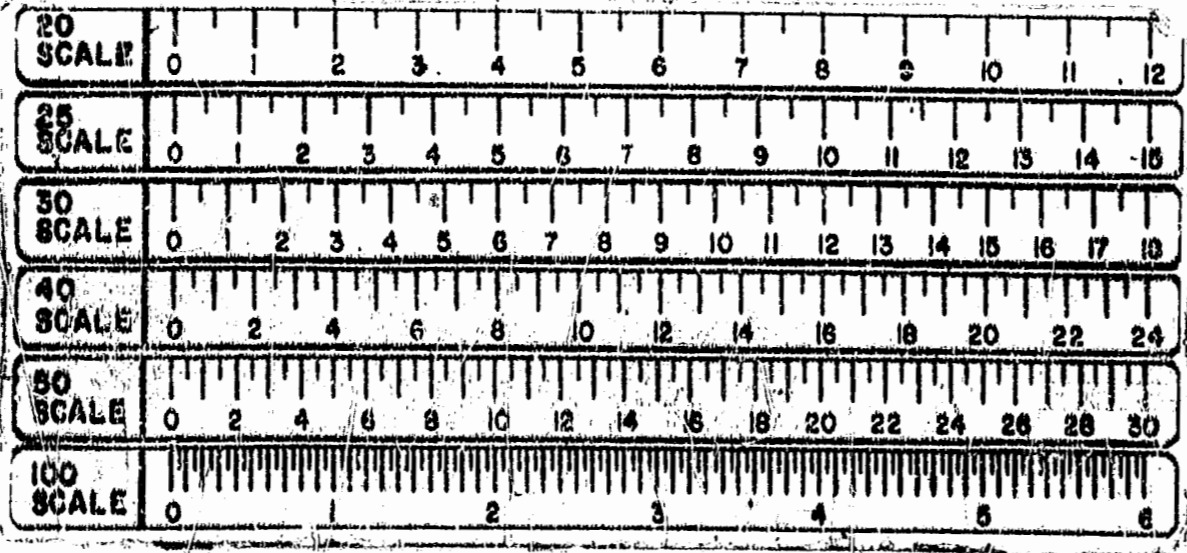
10-27-94 Stephen Romeo  
 DATE NAME

CURVE	LENTH	DEI.TA	RADI'S	TANGENT	DIRECTION	CHORD
C1	39.27'	90°00'00"	25.00'	25.00'	S08°38'27"E	35.36'
C2	22.72'	86°47'10"	15.00'	15.00'	N86°34'20"E	20.61'
C3	107.98'	14°45'23"	419.20'	54.29'	N66°33'59"E	107.68'
C4	24.25'	03°18'50"	419.20'	12.13'	N44°19'55"E	24.24'
C5	96.56'	13°11'54"	419.20'	48.50'	N52°35'17"E	96.35'
C6	22.26'	65°02'44"	15.00'	13.76'	N31°25'22"E	20.28'
C7	22.83'	43°36'10"	30.00'	12.00'	S52°54'05"E	22.28'
C8	44.55'	60°03'34"	42.50'	24.57'	S24°40'23"E	42.54'
C9	59.77'	80°34'48"	42.50'	36.03'	N45°38'48"E	54.97'
C10	27.78'	37°27'09"	42.50'	14.41'	S75°20'14"E	27.29'
C11	29.40'	39°38'25"	42.50'	15.32'	S36°47'27"E	28.82'
C12	36.70'	49°28'25"	42.50'	19.58'	N07°45'58"E	35.57'
C13	22.83'	43°36'10"	30.00'	12.00'	N10°42'05"E	22.26'
C14	22.26'	86°02'44"	15.00'	13.76'	S53°37'22"E	20.28'
C15	25.55'	48°59'08"	30.00'	13.67'	N59°36'26"E	24.87'
C16	15.54'	17°49'28"	50.00'	7.83'	N44°01'06"E	15.48'
C17	66.10'	75°44'58"	50.00'	38.89'	S89°12'10"E	61.39'
C18	42.66'	48°52'51"	50.00'	22.72'	S28°53'16"E	41.37'
C19	40.77'	46°57'16"	50.00'	21.72'	N2°01'47"E	39.84'
C20	77.11'	88°34'43"	50.00'	48.77'	N88°47'46"E	69.83'
C21	25.69'	48°59'08"	30.00'	13.67'	S71°24'26"E	24.87'
C22	23.56'	90°00'00"	15.00'	15.00'	N39°06'00"E	21.21'
C23	34.67'	66°13'10"	30.00'	19.56'	S40°46'52"E	32.77'
C24	55.80'	75°13'54"	42.50'	32.75'	S36°16'30"E	51.88'
C25	30.38'	40°57'16"	42.50'	15.87'	N21°49'05"E	29.74'
C26	32.59'	43°56'17"	42.50'	17.14'	N64°15'51"E	31.80'
C27	25.31'	34°13'36"	42.50'	13.09'	S76°39'13"E	25.01'
C28	43.30'	50°22'23"	42.50'	23.74'	S30°21'13"E	41.45'
C29	7.25'	13°51'03"	30.00'	3.64'	S08°05'33"E	7.23'
C30	67.52'	09°07'05"	42.46'	33.86'	S10°27'33"E	67.50'
C31	23.56'	90°00'00"	15.00'	15.00'	S50°54'00"E	21.21'
C32	33.95'	06°12'00"	374.20'	16.99'	N81°33'00"E	33.95'
C33	224.34'	34°21'00"	374.20'	115.66'	N89°51'00"E	221.00'
C34	2.05'	02°44'29"	42.77'	1.02'	N88°34'23"E	2.05'
C35	23.79'	20°07'00"	67.77'	12.02'	S82°44'22"E	23.67'
C36	22.70'	86°41'45"	15.00'	14.16'	N00°40'22"W	20.59'
C37	199.50'	17°59'00"	635.61'	100.58'	S35°01'45"E	194.68'
C38	342.03'	32°57'25"	594.61'	176.89'	S42°30'58"E	337.33'
C39	226.36'	21°48'44"	594.61'	114.57'	S73°20'04"E	225.00'
C40	25.07'	95°45'34"	15.00'	15.59'	N47°52'47"E	22.25'
C41	47.06'	39°03'40"	69.02'	24.48'	N19°31'50"E	46.15'
C42	57.52'	47°44'40"	69.02'	30.55'	N62°56'00"E	55.87'
C43	32.15'	26°07'54"	70.67'	16.36'	S80°09'43"E	31.97'
C44	76.37'	61°54'46"	70.67'	42.39'	S36°10'23"E	72.70'
C45	23.32'	89°05'00"	15.00'	14.76'	S49°45'30"E	21.04'
C46	23.80'	90°45'00"	15.00'	15.24'	N40°14'30"E	21.36'
C47	36.40'	88°48'21"	24.02'	22.72'	N43°24'10"E	33.02'
C48	39.42'	87°58'40"	24.67'	24.78'	S49°12'20"E	35.66'
C49	23.80'	90°55'00"	15.00'	15.24'	N40°14'30"E	21.36'
C50	24.00'	91°39'52"	15.00'	15.44'	S45°49'56"E	21.52'
C51	23.32'	89°05'00"	15.00'	14.76'	S49°45'30"E	21.04'
C52	23.18'	88°32'15"	15.00'	14.62'	N44°16'07"E	20.94'
C53	66.93'	54°58'35"	69.75'	36.29'	S27°29'18"E	64.39'
C54	73.51'	130°14'25"	32.34'	69.73'	N59°54'13"E	58.67'
C55	30.36'	22°29'43"	77.34'	15.38'	N06°01'51"E	30.17'
C56	46.34'	34°19'44"	77.34'	23.89'	N34°26'35"E	45.65'
C57	33.60'	24°53'21"	77.34'	17.07'	N64°03'07"E	33.33'
C58	63.24'	46°50'54"	77.34'	33.51'	S80°04'46"E	61.49'
C59	59.29'	29°36'05"	114.75'	30.32'	S40°10'32"E	58.63'
C60	50.82'	25°22'29"	114.75'	25.83'	S12°41'14"E	50.41'
C61	22.24'	84°56'28"	15.00'	13.73'	S42°28'14"E	20.26'
C62	116.06'	109°15'58"	644.61'	58.19'	S79°46'59"E	115.91'
C63	141.59'	121°35'08"	644.61'	71.08'	S68°19'56"E	141.31'
C64	106.62'	09°28'37"	644.61'	53.44'	S57°18'03"E	106.50'
C65	109.99'	09°46'35"	644.61'	55.13'	S47°40'22"E	109.86'
C66	96.14'	08°35'23"	644.61'	48.41'	S36°29'28"E	93.53'
C67	91.79'	08°09'31"	644.61'	45.97'	S30°07'01"E	91.71'
C68	23.56'	90°00'00"	15.00'	15.00'	S71°02'15"E	21.21'
C69	37.35'	19°08'20"	111.83'	18.85'	N73°31'55"E	37.18'
C70	47.62'	24°23'52"	111.83'	24.18'	S84°41'59"E	47.26'
C71	34.79'	17°49'33"	111.83'	17.54'	S63°35'17"E	34.65'
C72	71.57'	61°21'45"	66.83'	39.65'	S85°21'22"E	68.20'
C73	23.56'	90°00'00"	15.00'	15.00'	N18°57'45"E	21.21'
C74	179.06'	17°31'10"	585.61'	90.24'	S34°47'50"E	178.37'
C75	24.53'	93°46'05"	15.00'	16.02'	N89°33'33"E	21.90'
C76	46.93'	97°21'00"	27.62'	31.41'	N06°00'00"W	41.48'
C77	53.94'	42°33'28"	72.62'	28.28'	S33°23'46"E	52.71'
C78	39.27'	90°00'00"	25.00'	25.00'	N81°21'33"E	35.36'
C79	8.76'	06°54'50"	72.62'	4.39'	N39°13'05"E	8.76'
C80	60.68'	47°52'43"	72.62'	32.24'	N11°49'19"E	58.93'
C81	24.58'	93°54'19"	15.00'	16.06'	N04°16'39"W	21.92'
C82	35.64'	03°26'02"	54.48'	17.82'	S60°42'41"E	35.63'
C83	34.56'	180°00'00"	11.00'	---	N36°21'33"E	22.00'
C84	34.56'	180°00'00"	11.00'	---	N36°21'33"E	22.00'
C85	23.80'	02°24'38"	565.61'	11.90'	S52°26'08"E	23.80'
C86	35.59'	03°06'37"	655.61'	17.80'	S52°05'09"E	35.58'
C87	12.25'	01°52'30"	374.20'	6.12'	N77°57'45"E	12.25'
C88	228.70'	31°16'14"	419.20'	117.32'	N1°18'37"E	225.96'
C89	198.20'	26°12'20"	42.50'	---	S6°54'00"E	61.55'
C90	242.58'	27°58'16"	50.00'	---	N05°54'00"W	65.62'
C91	113.10'	360°00'00"	18.00'	---	N90°00'00"E	0.00'
C92	187.46'	252°43'25"	42.50'	---	N52°28'16"E	68.45'
C93	270.55'	41°25'30"	374.20'	141.49'	N63°23'15"E	264.69'
C94	604.03'	58°12'11"	594.61'	330.98'	S55°08'21"E	578.39'
C95	104.57'	86°48'21"	69.02'	65.28'	N43°24'10"E	94.86'
C96	108.52'	87°58'40"	70.67'	68.22'	S49°12'20"E	78.16'
C97	173.54'	128°33'41"	77.34'	160.56'	N59°03'51"E	139.35'
C98	110.11'	54°58'35"	114.75'	59.71'	S27°29'18"E	105.93'
C99	662.70'	58°54'13"	644.61'	363.99'	S55°29'21"E	633.90'
C100	82.41'	42°13'25"	111.83'	43.18'	S75°47'13"E	80.56'
C101	69.45'	54°47'33"	72.62'	37.64'	N16°16'44"E	66.83'
C102	27.35'	02°38'08"	594.61'	13.60'	N87°01'04"E	27.35'
C103	31.92'	02°30'15"	644.61'	15.96'	N87°07'07"E	31.92'



LOT NO.	DISTANCE TO FRONT SETBACK	LOT NO.	DISTANCE TO FRONT SETBACK	LOT NO.	DISTANCE TO FRONT SETBACK
1	35.00' - FACING LOT 4	19	35.00'	36	35.00' - FACING LOT 21
2	35.00' - FACING JONES MILL LANE	20	35.00' - FACING ROBERT COLE COURT	37	35.00' - FACING COMMON AREA "D"
3	35.00'	21	35.00' - FACING JONES MILL LANE	38	35.00'
4	35.00' - FACING JONES MILL LANE	22	35.00'	39	40.17'
5	35.00' - FACING SPARKS COURT	23	35.00' - FACING COMMON AREA "E"	40	40.00'
6	106.13'	24	44.30'	41	35.00' - FACING COMMON AREA "D"
7	100.14'	25	70.14'	42	35.00' - FACING LOT 1
8	35.00' - FACING SPARKS COURT	26	35.00' - FACING COMMON AREA "E"		
9	35.00' - FACING JONES MILL LANE	27	35.00' - FACING LOT 26		
10	35.00'	28	35.00' - FACING LOT 25		
11	67.19'	29	35.00' - FACING COMMON AREA "F"		
12	64.96'	30	35.00' - FACING COMMON AREA "F"		
13	35.00' - FACING JONES MILL LANE	31	35.00' - FACING COMMON AREA "F"		
14	35.00' - FACING ROBERT COLE COURT	32	35.00' - FACING LOT 22		
15	100.85'	33	35.00'		
16	59.78'	34	35.00'		
17	VARIES (ALONG S. SIDE CONS. ESMT)	35	35.00'		
18	61.54'				

LINE	DIRECTION	DISTANCE	LINE	DIRECTION	DISTANCE
L1	S11°08'00"E	31.12'	L15	N00°00'00"W	33.83'
L2	S11°06'00"E	31.12'	L16	S08°13'00"E	81.37'
L3	N84°06'00"E	32.14'	L17	S84°58'38"E	28.75'
L4	S42°04'38"W	140.83'	L18	N00°00'00"W	31.27'
L5	S42°40'30"W	29.82'	L19	N88°41'00"E	34.17'
L6	S73°24'22"W	103.61'	L20	S87°12'08"W	109.88'
L7	S86°48'20"W	14.31'	L21	S87°12'08"W	91.51'
L8	N88°48'20"E	24.25'	L22	N33°03'42"E	28.16'
L9	S88°48'20"W	38.57'	L23	N05°13'00"E	14.07'
L10	S08°13'00"E	12.87'	L24	N62°12'00"E	207.89'
L11	N88°42'00"E	32.89'	L25	S18°01'48"W	172.41'
L12	S00°00'00"E	15.20'	L26	S02°52'35"W	16.46'
L13	S08°13'00"E	80.17'	L27	N88°55'11"W	128.00'
L14	N64°18'35"W	20.75'	L28	S10°50'14"W	203.89'
			L29	S87°31'28"W	185.00'



PLAT OF  
**HOLLY HILLS**  
 PHASE II  
 BEING A SUBDIVISION OF  
**McCALE DEVELOPMENT CORPORATION (DB 106 PG 834)**  
 WILLIAMSBURG, VIRGINIA  
 SCALE: 1"=100' 10/27/94  
 SHEET 2 OF 2

**Langley and McDonald, P.C.**  
 Engineers - Surveyors - Planners  
 Landscape Architects - Environmental Consultants  
 VIRGINIA BEACH WILLIAMSBURG

1:00 pm  
 29th Nov 1994  
 11/28/94  
 Delta to Survey