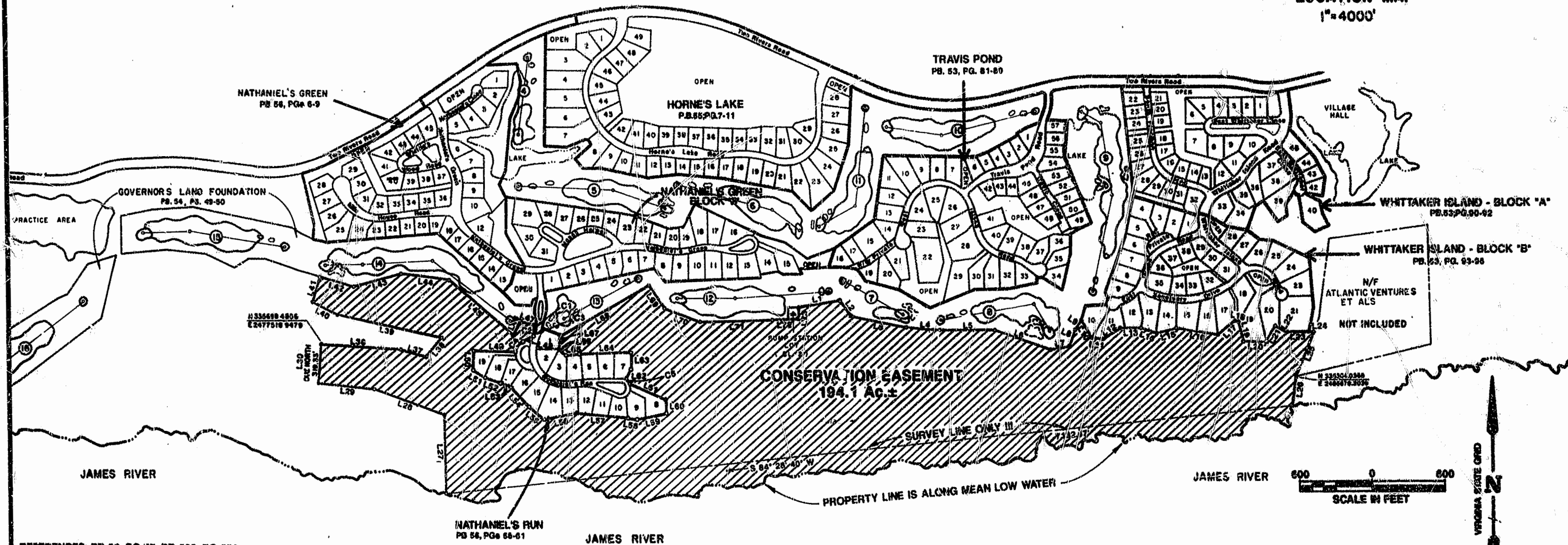
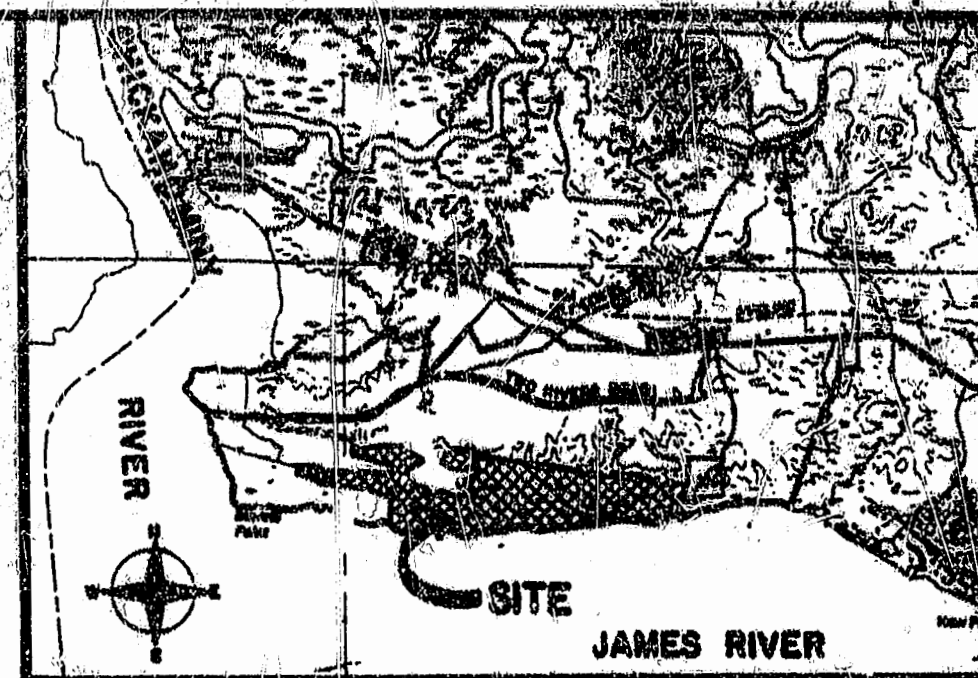
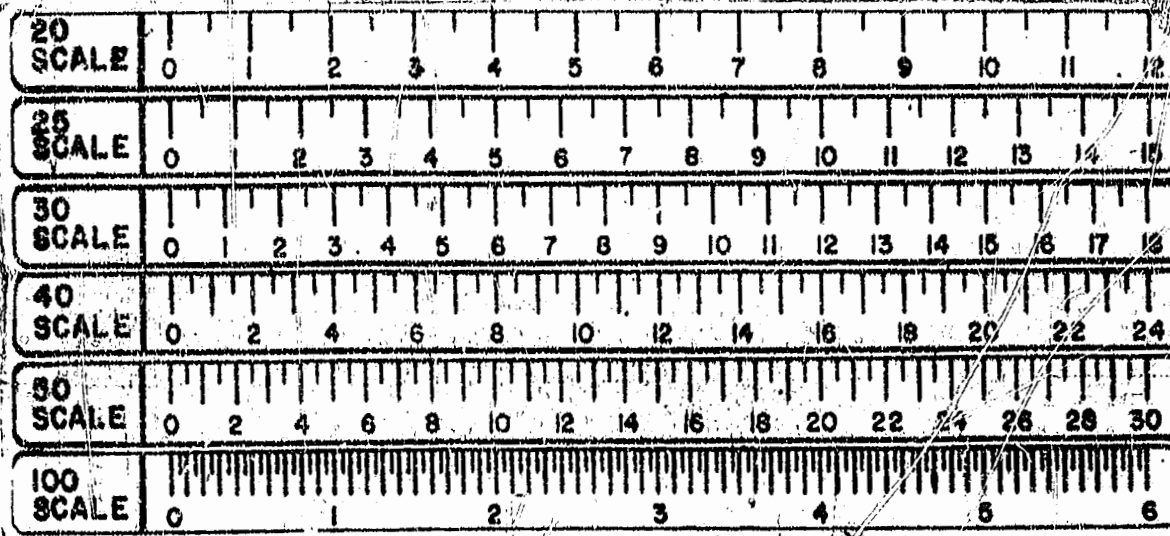


✓ DENOTES CONSERVATION EASEMENT OF 194.1 ACRES, MORE OR LESS, TO BE DEDICATED TO THE LOWER JAMES RIVER ASSOCIATION AND THE HISTORIC RIVERS LAND CONSERVANCY



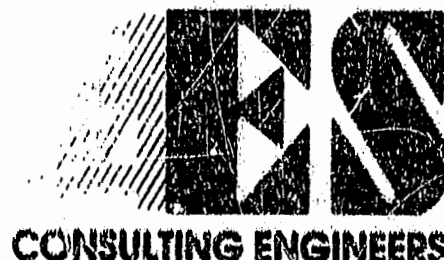
REFERENCES: PB 56, PG 77; DB 598, PG 556

LINE	BEARING	DISTANCE	LINE	BEARING	DISTANCE	LINE	BEARING	DISTANCE	LINE	BEARING	DISTANCE	LINE	BEARING	DISTANCE
L 1	N80 33'00"E	330.45 ft	L16	S80 32'00"E	353.00 ft	L36	S86 11'00"E	670.90 ft	L46	N27 48'00"E	125.00 ft	L61	N66 59'00"W	327.30 ft
L 2	S35 50'00"E	171.00 ft	L17	N51 05'00"E	191.23 ft	L37	S75 21'00"E	249.00 ft	L47	S76 11'00"E	125.30 ft	L62	N28 35'00"E	90.34 ft
L 3	S78 52'00"E	466.00 ft	L18	S60 00'00"E	30.25 ft	L38	N38 19'00"E	209.00 ft	L48	S62 26'25"W	102.20 ft	L63	N0 13'00"W	139.45 ft
L 4	S85 53'00"E	278.00 ft	L19	S10 59'00"E	168.00 ft	L39	N78 28'00"W	893.00 ft	L49	N88 29'00"W	357.05 ft	L64	S88 17'00"W	420.00 ft
L 5	N89 53'00"E	458.00 ft	L20	S89 59'00"E	195.00 ft	L40	N65 38'00"W	243.00 ft	L50	S1 40'00"W	163.50 ft	L65	S85 01'00"W	108.10 ft
L 6	S71 05'00"E	494.00 ft	L21	N29 19'00"E	149.09 ft	L41	N18 16'00"E	223.75 ft	L51	S61 40'00"E	122.04 ft	L66	N61 12'49"W	79.19 ft
L 7	N81 28'00"E	167.00 ft	L22	S59 58'00"E	117.86 ft	L42	S73 35'00"E	310.02 ft	L52	S70 36'00"E	133.21 ft	L67	N11 51'56"E	109.71 ft
L 8	N15 46'00"E	120.20 ft	L23	N88 28'00"E	181.00 ft	L43	N74 56'00"E	404.00 ft	L53	S71 31'00"E	92.25 ft	L68	N61 01'00"E	846.00 ft
L 9	N26 35'00"E	116.83 ft	L24	N88 28'00"E	35.19 ft	L44	S82 56'00"E	408.00 ft	L54	S42 03'14"E	214.81 ft	L69	S34 21'00"E	230.00 ft
L10	S28 22'00"E	176.00 ft	L25	S22 09'57"W	413.32 ft	L45	S49 53'00"E	699.00 ft	L55	S50 37'00"E	167.29 ft	L70	S69 50'00"E	319.00 ft
L11	S83 15'00"E	85.00 ft	L26	DUE SOUTH	225.71 ft				L56	N79 59'00"E	277.96 ft	L71	N88 37'00"E	600.00 ft
L12	S59 16'00"E	176.00 ft	L27	DUE NORTH	653.00 ft				L57	S84 11'00"E	399.50 ft	L72	N87 47'49"E	236.03 ft
L13	S88 07'00"E	185.00 ft	L28	N70 19'00"W	618.00 ft				L58	S81 58'36"E	83.27 ft	L73	DUE NORTH	101.42 ft
L14	S69 29'00"E	125.00 ft	L29	N64 17'00"W	472.35 ft				L59	N79 12'00"E	261.70 ft			
L15	N74 33'00"E	180.00 ft	L30	DUE NORTH	319.33 ft				L60	N2 47'00"W	115.00 ft			

CURVE	DELTA	RADIUS	LENGTH	TANGENT	CHORD	CHORD BEARING
C1	05 51'44"	235.00'	24.04'	12.03'	24.03'	S 4 53'00"W
C2	00 28'08"	1646.67'	13.47'	6.74'	13.47'	S 8 02'57"W
C3	10 49'24"	235.00'	44.39'	22.26'	44.33'	S13 41'42"W
C4	50 30'11"	122.50'	107.98'	57.78'	104.52'	S37 11'16"W
C5	35 21'10"	79.50'	49.05'	25.34'	48.28'	N43 44'25"W

Recorded 1944 day of Oct 1994
 D.A. No. 711 pages 279
 No. 10 5/10/24

PLAT RECORDED IN
 P.B. NO. 60 PAGE 17



5248 Olde Towne Road, Suite 1
 Williamsburg, Virginia 23188
 (804) 253-0040
 Fax (804) 220-8904

**MAP SHOWING CONSERVATION EASEMENT
 DEDICATED TO THE LOWER JAMES RIVER
 ASSOCIATION AND THE
 HISTORIC RIVERS LAND CONSERVANCY**
 THE GOVERNOR'S LAND AT TWO RIVERS
 POWHATAN DISTRICT JAMES CITY COUNTY VIRGINIA



NO.	DATE	REVISION / COMMENT / NOTE	BY

Designed: AES
 Scale: 1" = 600'
 Date: JAN. 1994
 Project No.: 7173
 Drawing No.: 1 OF 1