

60 PAGE 10

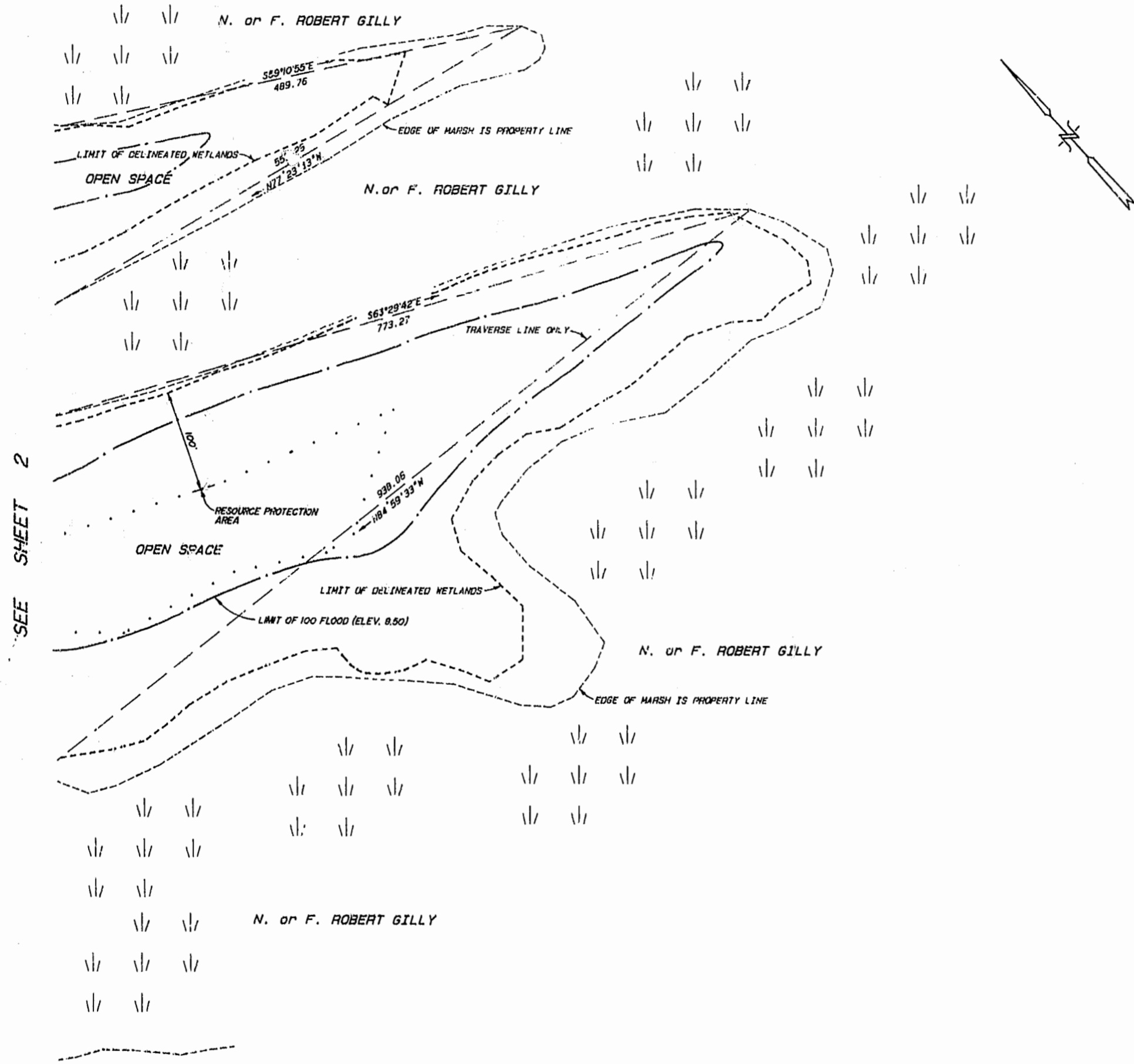
PELEG'S POINT

SECTIONS TWO & THREE
JAMESTOWN DISTRICT
JAMES CITY COUNTY, VIRGINIA
C. K. TUDOR ENGINEERS, INC.
11524 JEFFERSON AVENUE
NEWPORT NEWS, VIRGINIA

SCALE: 1"=100'

JUNE 6, 1994

SHEET 3 OF 3



COLONIAL NATIONAL PARKWAY
DB 33 PG 505



11:29 AM
Recorded 6/14/94
D. G. No. 709
Notarized

