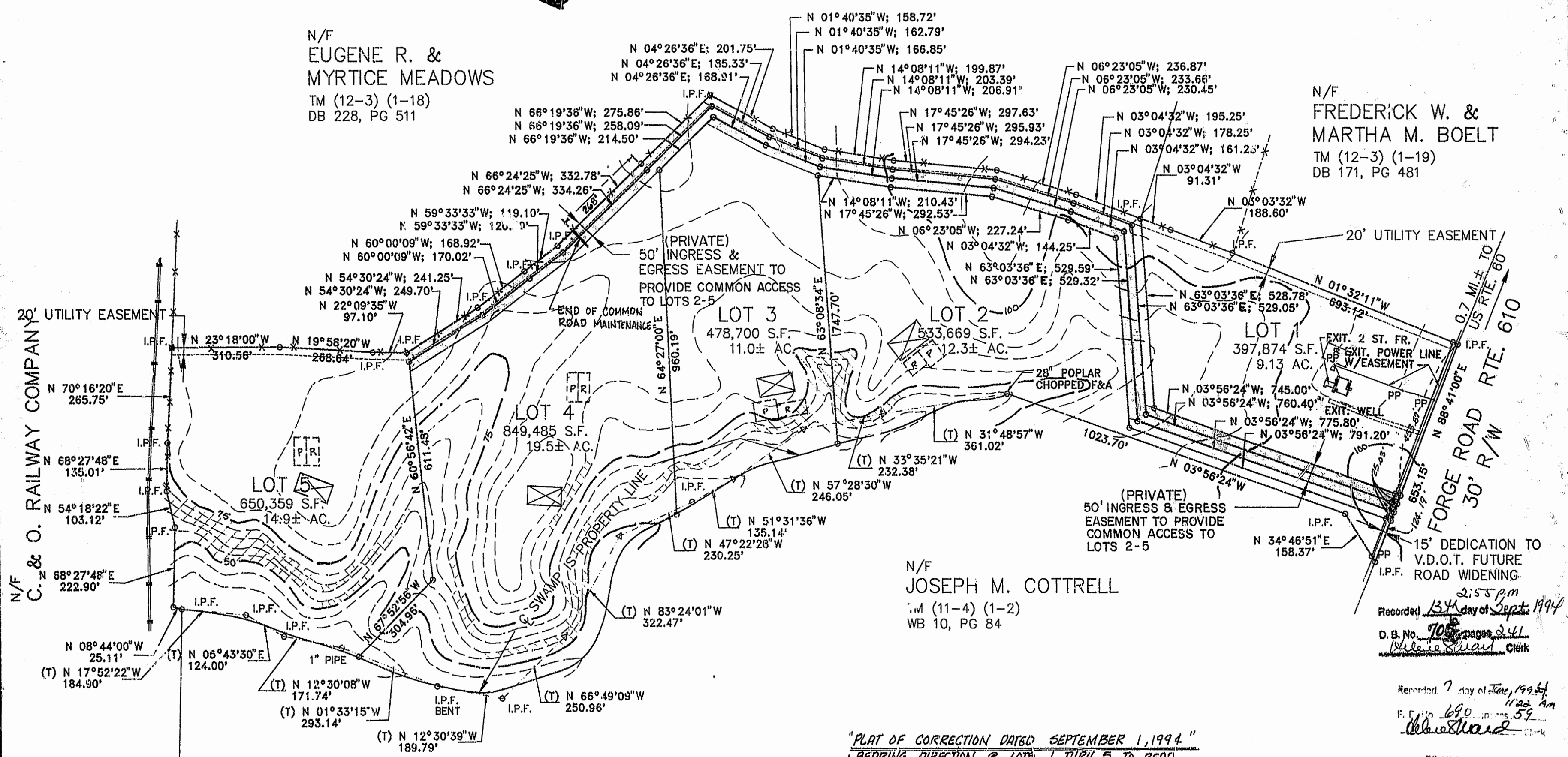


N/F
EUGENE R. &
MYRTICE MEADOWS
TM (12-3) (1-18)
DB 228, PG 511

N/F
FREDERICK W. &
MARTHA M. BOELT
TM (12-3) (1-19)
DB 171, PG 481



N/F
C. & O. RAILWAY COMPANY'S
20' UTILITY EASEMENT

- PRIMARY DRAINAGE FIELD
- RESERVE DRAINAGE FIELD
- DENOTES SLOPES 25% OR GREATER
- (T) TRAVERSE LINE ONLY

N/F
JOSEPH M. COTTRELL
TM (11-4) (1-2)
WB 10, PG 84

Recorded 13th day of Sept. 1994
D.B. No. 705 pages 241
Clerk

Recorded 7 day of June, 1994
P. No. 690 pages 59
Clerk

"PLAT OF CORRECTION DATED SEPTEMBER 1, 1994"
BEARING DIRECTION & LOTS 1 THRU 5 TO READ
N 63°-03'-36"E
BEARING & LOTS 4 AND 5 TO READ N 60°-56'-42"E
COMMON ROAD MAINTENANCE ENDS AT A POINT
2168'-N 66°-24'-25" W FROM BEGINNING OF COURSE ALONG
EASTERN BOUNDARY OF LOT 4 AS DESIGNATED ON PLAT.

PLAT RECORDED IN
P.B. NO. 57 PAGE 50-51

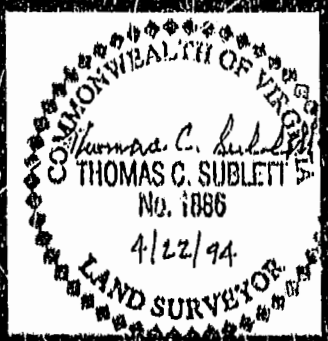
GRAPHIC SCALE

PLAT RECORDED IN
P.B. NO. 59 PAGE 90-91

COMMISSION NO.
5496



ENGINEERS • ARCHITECTS • SURVEYORS
INTERIOR DESIGNERS PLANNERS
P.O. BOX 3505 WILLIAMSBURG, VIRGINIA 23187
(804)253-0673 (804)874-5015



REF. DB 66/539-541
DB 28/210
WB 8/368
VEPCO EASEMENT
DB 99/582
PE 3/22
DB 682/188

SUBDIVISION PLAT
OF
CHADWICKE ESTATES
STONEHOUSE DISTRICT

JAMES CITY COUNTY VIRGINIA

DATE APRIL 22, 1994 DESIGNED TCS DRAWN LBA SCALE 1"=200'