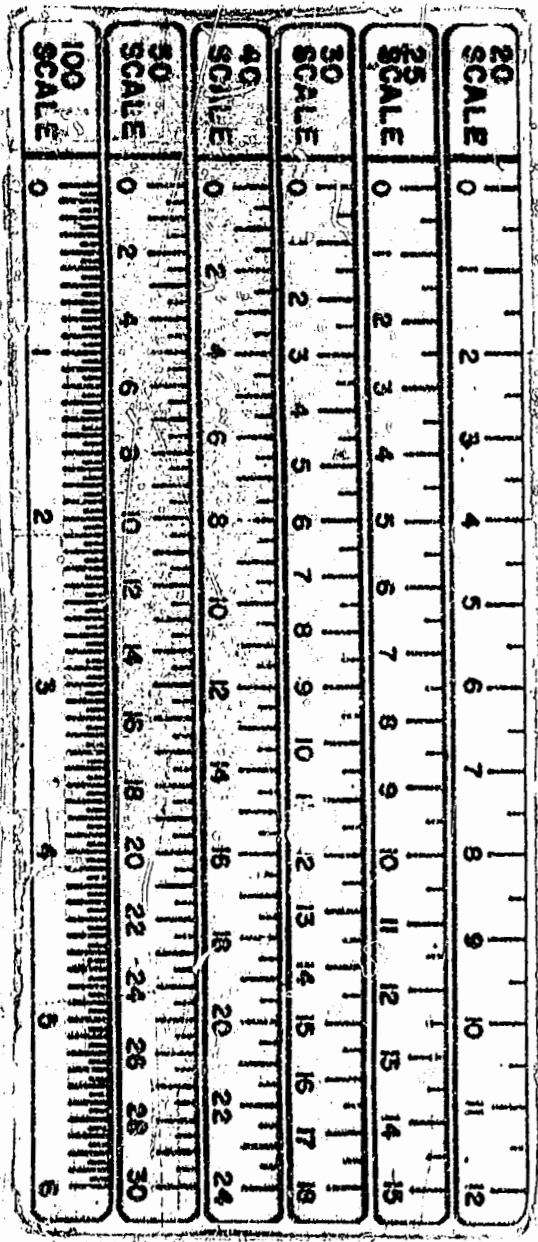
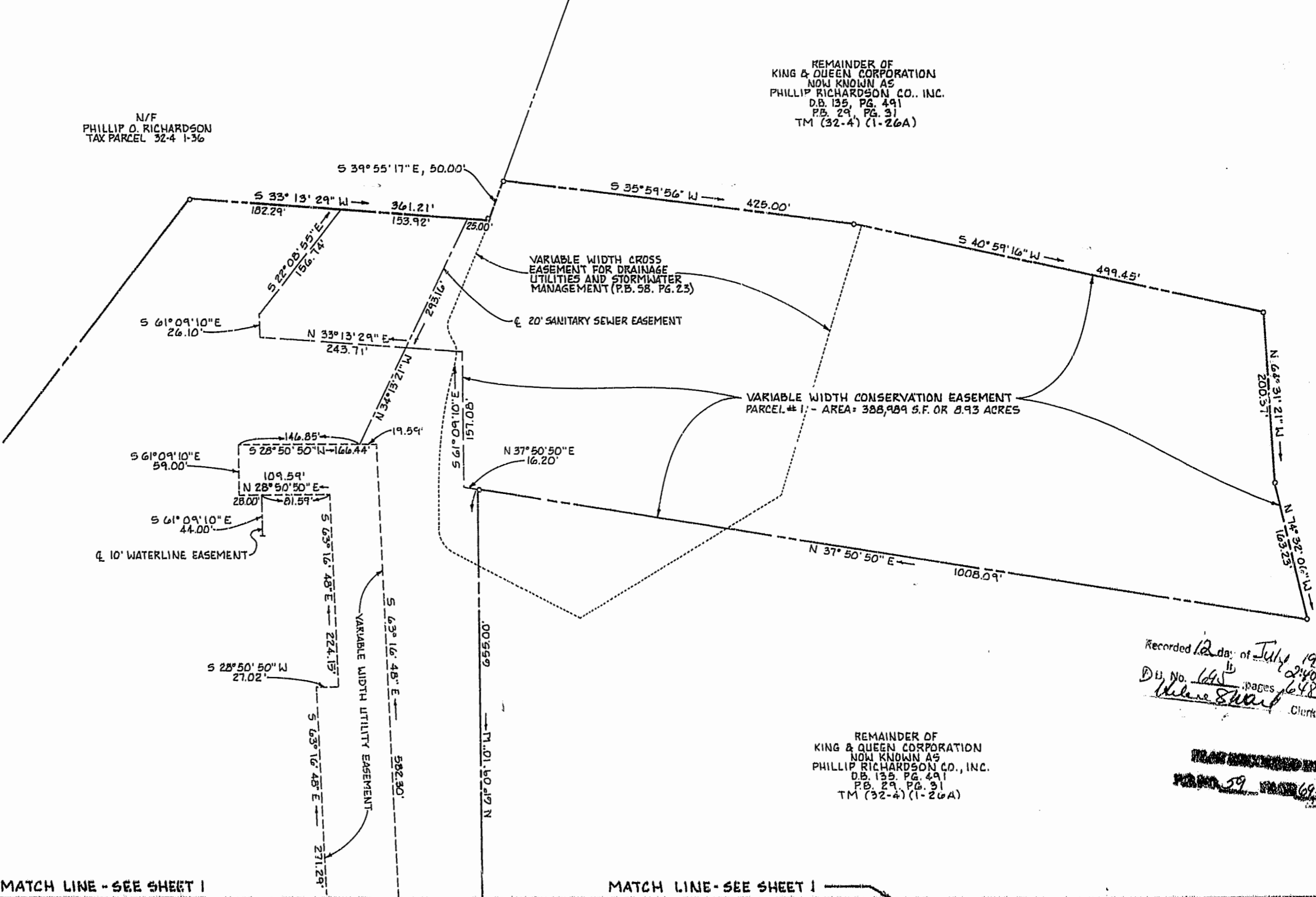


N/F
PHILLIP O. RICHARDSON
TAX PARCEL 32-4 1-36

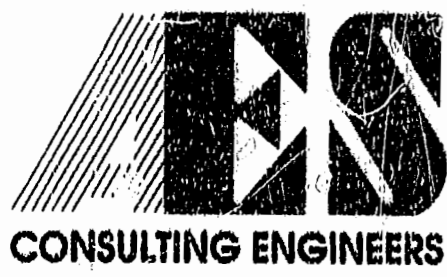
REMAINDER OF
KING & QUEEN CORPORATION
NOW KNOWN AS
PHILLIP RICHARDSON CO., INC.
D.B. 135, PG. 491
P.B. 29, PG. 31
TM (32-4) (1-26A)



Recorded 12 days of July 1994
D.B. No. 645, pages 46-48
Walter Shaw, Clerk

REMAINDER OF
KING & QUEEN CORPORATION
NOW KNOWN AS
PHILLIP RICHARDSON CO., INC.
D.B. 135, PG. 491
P.B. 29, PG. 31
TM (32-4) (1-26A)

PLAT SHOWING UTILITY, SCENIC, AND CONSERVATION EASEMENTS
WILLIAMSBURG PLANTATION, PHASE 1
OWNER: WILLIAMSBURG PLANTATION, INC.



5248 Olde Towne Road, Suite 1
Williamsburg, Virginia 23188
(804) 253-0040
Fax (804) 220-8994

PLAT SHOWING UTILITY, SCENIC,
AND CONSERVATION EASEMENTS
WILLIAMSBURG PLANTATION, PHASE 1
OWNER: WILLIAMSBURG PLANTATION, INC.
BERKELEY DISTRICT JAMES CITY COUNTY VIRGINIA



No.	DATE	REVISION / COMMENT / NOTE	BY
1	5-26-94	REVISIONS PER J.C.C. COMMENTS	EMG

Designed EMG	Drawn CLJ
Scale 1"=100'	Date 10/14/94
Project No. 7555	
Drawing No. 2 OF 2	