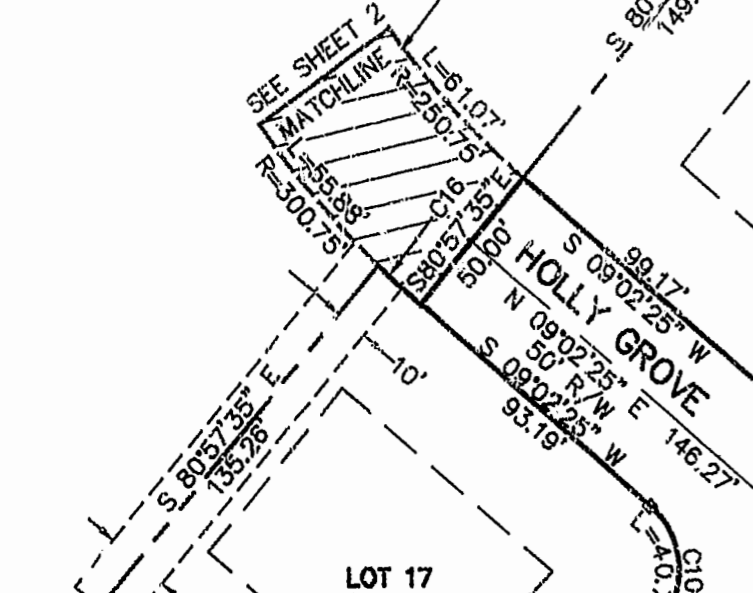
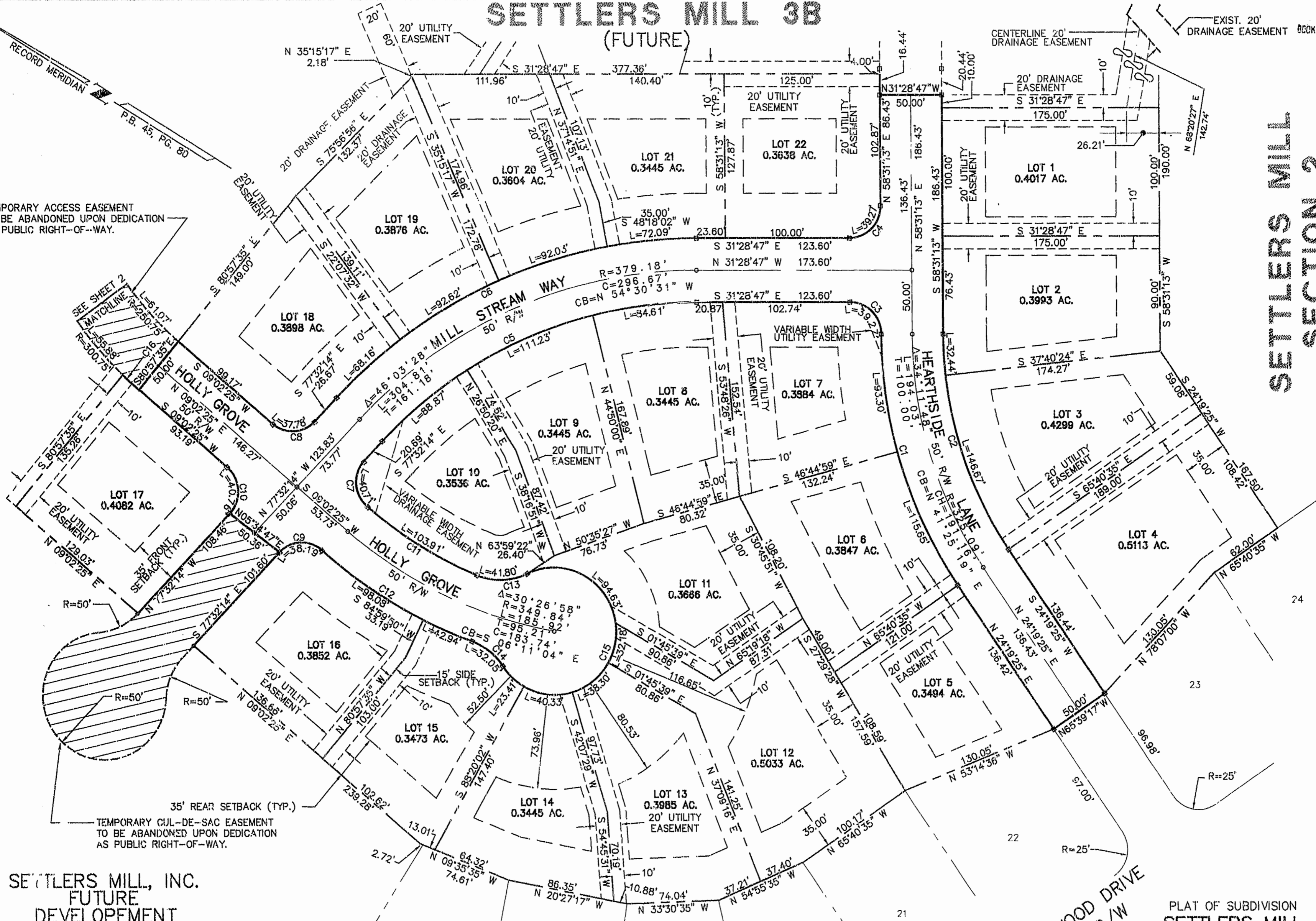


# SETTLERS MILL 3B (FUTURE)

## SETTLERS MILL SECTION 2

TEMPORARY ACCESS EASEMENT  
TO BE ABANDONED UPON DEDICATION  
AS PUBLIC RIGHT-OF-WAY.

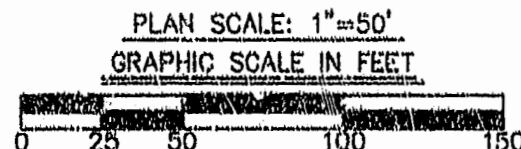


SETTLERS MILL, INC.  
FUTURE  
DEVELOPEMENT

## SETTLERS MILL SECTION 1

LAKEWOOD DRIVE  
50' R/W

PLAT OF SUBDIVISION  
SETTLERS MILL  
AT JAMESTOWN  
SECTION 3A  
FOR SETTLERS MILL INC.  
JAMES CITY COUNTY, VIRGINIA  
SCALE: 1" = 50' DATE: 5/24/94  
SHEET 2 OF 2



10:06 AM  
RECORDED 16th day of June 1994  
D. B. No. 691, Page 1, 2, 3, 4  
John L. Hutcherson



**Langley and McDonald, P.C.**  
Engineers - Surveyors - Planners  
Landscape Architects - Environmental Consultants  
VIRGINIA BEACH WILLIAMSBURG