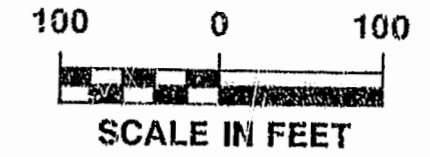


AREA TABULATION  
 FORD'S COLONY, SECTION XVI-A, PHASE I  
 LOTS 23 - 36 AND LOTS 58 - 65

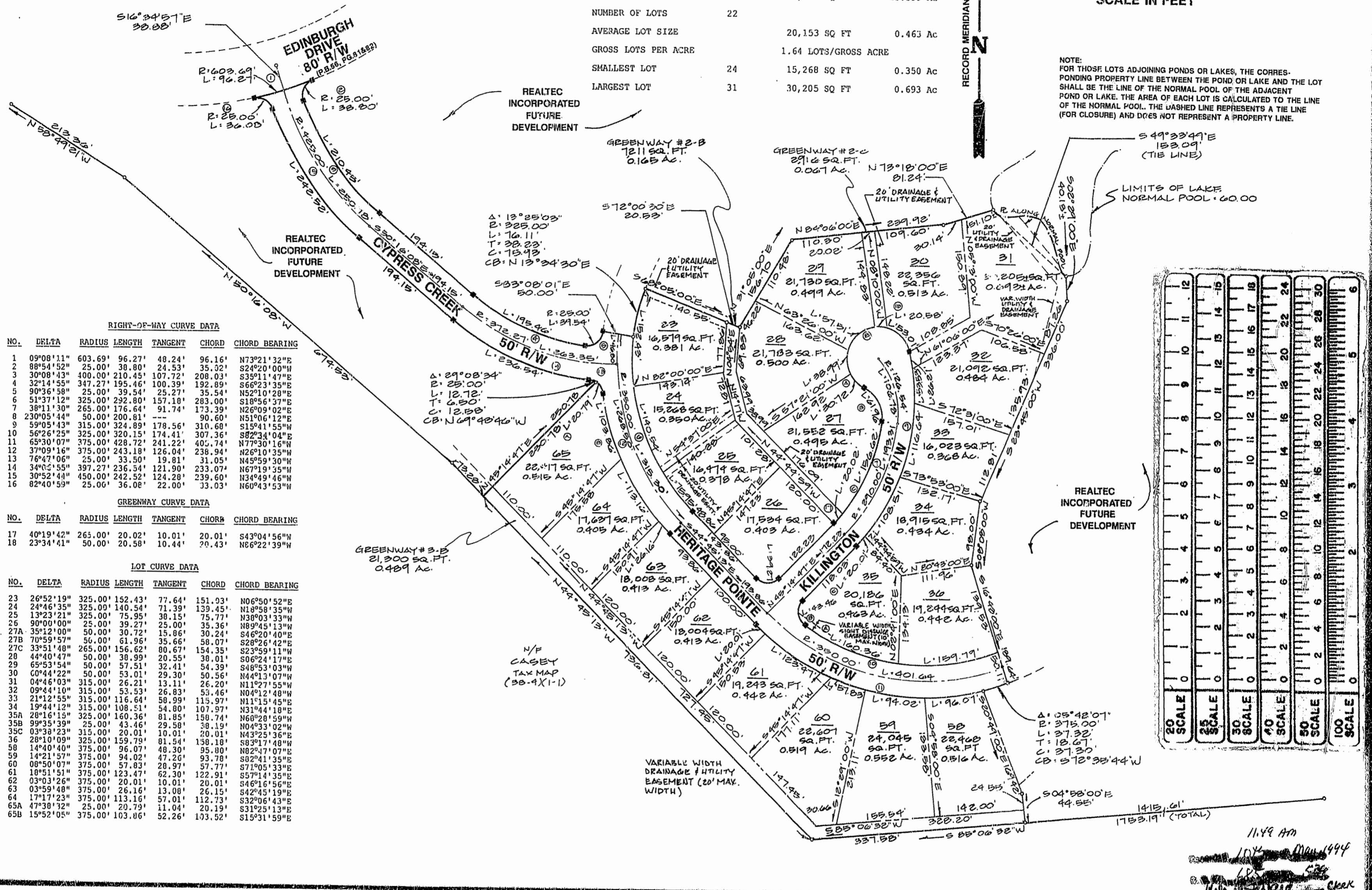
BOOK 59 PAGE 24

AREA OF RESIDENTIAL LOTS	443,367 SQ FT	10.178 Ac
AREA OF GREENWAYS	31,427 SQ FT	0.722 Ac
AREA OF RIGHT-OF-WAYS	108,866 SQ FT	2.499 Ac
TOTAL AREA SUBDIVIDED	583,660 SQ FT	13.399 Ac
NUMBER OF LOTS	22	
AVERAGE LOT SIZE	20,153 SQ FT	0.463 Ac
GROSS LOTS PER ACRE	1.64 LOTS/GROSS ACRE	
SMALLEST LOT	24	15,268 SQ FT 0.350 Ac
LARGEST LOT	31	30,205 SQ FT 0.693 Ac



RECORD MERIDIAN  
 N

NOTE:  
 FOR THOSE LOTS ADJOINING PONDS OR LAKES, THE CORRESPONDING PROPERTY LINE BETWEEN THE POND OR LAKE AND THE LOT SHALL BE THE LINE OF THE NORMAL POOL OF THE ADJACENT POND OR LAKE. THE AREA OF EACH LOT IS CALCULATED TO THE LINE OF THE NORMAL POOL. THE DASHED LINE REPRESENTS A TIE LINE (FOR CLOSURE) AND DOES NOT REPRESENT A PROPERTY LINE.



RIGHT-OF-WAY CURVE DATA

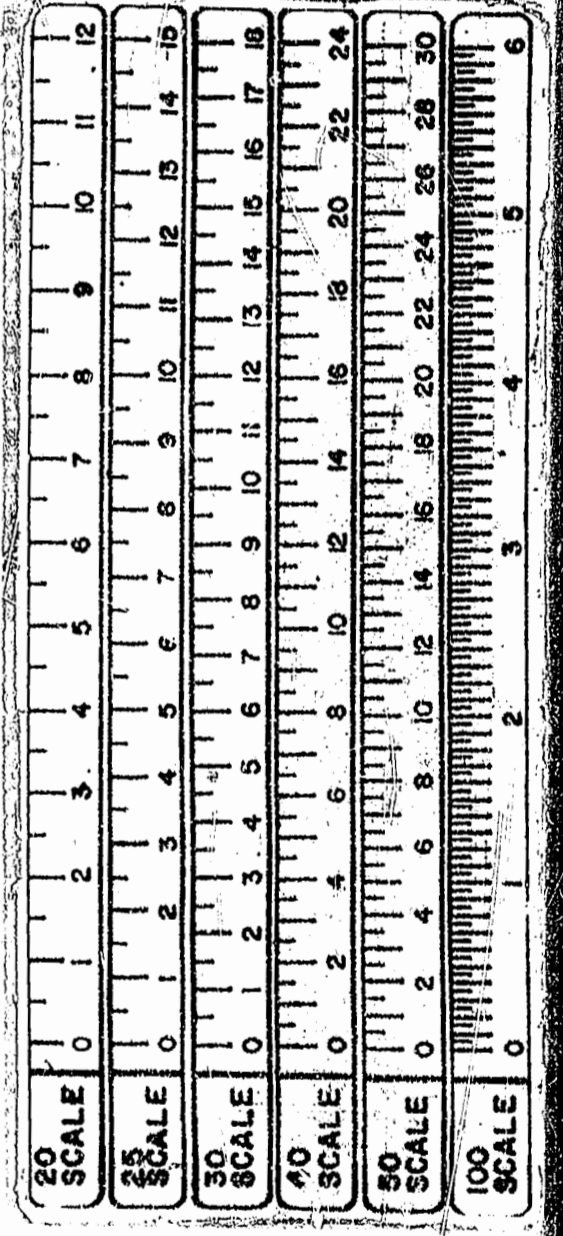
NO.	DELTA	RADIUS	LENGTH	TANGENT	CHORD	CHORD BEARING
1	09°08'11"	603.69'	96.27'	48.24'	96.16'	N73°21'32"E
2	88°54'52"	25.00'	38.80'	24.53'	35.32'	S24°20'00"W
3	30°08'43"	400.00'	210.45'	107.72'	208.03'	S35°11'47"E
4	32°14'55"	347.27'	195.46'	100.39'	192.89'	S66°23'35"E
5	90°36'58"	25.00'	39.54'	25.27'	35.54'	N52°10'28"E
6	51°37'12"	325.00'	232.80'	157.18'	283.00'	S18°56'37"E
7	38°11'30"	265.00'	176.64'	91.74'	173.39'	N26°09'02"E
8	230°05'44"	50.00'	200.81'	---	90.60'	N51°06'12"E
9	59°05'43"	315.00'	324.89'	178.56'	310.68'	S15°41'55"W
10	56°26'25"	325.00'	320.15'	174.41'	307.36'	S82°34'04"E
11	65°30'07"	375.00'	428.72'	241.22'	405.74'	N77°30'16"W
12	37°09'16"	375.00'	243.18'	126.04'	238.94'	N26°10'35"W
13	76°47'06"	25.00'	33.50'	19.81'	31.05'	N45°59'30"W
14	34°05'55"	397.27'	236.54'	121.90'	233.07'	N67°19'35"W
15	30°52'41"	450.00'	242.52'	124.28'	239.60'	N34°49'46"W
16	82°40'59"	25.00'	36.08'	22.00'	33.03'	N60°43'53"W

GREENWAY CURVE DATA

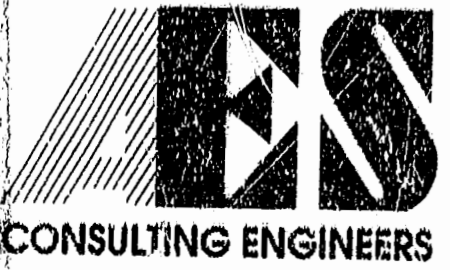
NO.	DELTA	RADIUS	LENGTH	TANGENT	CHORD	CHORD BEARING
17	40°19'42"	265.00'	20.02'	10.01'	20.01'	S43°04'56"W
18	23°34'41"	50.00'	20.58'	10.44'	20.43'	N86°22'39"W

LOT CURVE DATA

NO.	DELTA	RADIUS	LENGTH	TANGENT	CHORD	CHORD BEARING
23	26°52'19"	325.00'	152.43'	77.64'	151.03'	N06°50'52"E
24	24°46'35"	325.00'	140.54'	71.39'	139.45'	N18°58'35"E
25	13°23'21"	325.00'	75.95'	38.15'	75.77'	N38°03'33"W
26	90°00'00"	25.00'	39.27'	25.00'	35.36'	N89°45'13"W
27A	35°12'00"	50.00'	30.72'	15.86'	30.24'	S46°20'40"E
27B	70°59'57"	50.00'	61.96'	35.66'	58.07'	S28°26'42"E
27C	33°51'48"	265.00'	156.62'	80.67'	154.35'	S23°59'11"W
28	44°40'47"	50.00'	38.99'	20.55'	38.01'	S06°24'17"E
29	65°53'54"	50.00'	57.51'	32.41'	54.39'	S48°53'03"W
30	60°44'22"	50.00'	53.01'	29.30'	50.56'	N44°13'07"W
31	04°46'03"	315.00'	26.21'	13.11'	26.20'	N11°27'55"W
32	09°44'10"	315.00'	53.53'	26.83'	53.46'	N04°12'48"W
33	21°12'55"	315.00'	116.64'	58.99'	115.97'	N11°15'45"E
34	19°44'12"	315.00'	108.51'	54.80'	107.97'	N31°44'18"E
35A	28°16'15"	325.00'	160.36'	81.85'	158.74'	N60°28'59"W
35B	99°35'39"	25.00'	43.46'	29.58'	38.19'	N04°33'02"W
35C	03°38'23"	315.00'	20.01'	10.01'	20.01'	N43°25'36"E
36	28°10'09"	325.00'	159.79'	81.54'	158.18'	S83°17'48"W
58	14°40'40"	375.00'	96.07'	48.30'	95.80'	N82°47'07"E
59	14°21'57"	375.00'	94.02'	47.26'	93.78'	S82°41'35"E
60	08°50'07"	375.00'	57.83'	28.97'	57.77'	S71°05'33"E
61	18°51'51"	375.00'	123.47'	62.30'	122.91'	S57°14'35"E
62	03°03'26"	375.00'	20.01'	10.01'	20.01'	S46°16'56"E
63	03°59'48"	375.00'	26.16'	13.08'	26.15'	S42°45'19"E
64	17°17'23"	375.00'	113.16'	57.01'	112.73'	S32°06'43"E
65A	47°38'32"	25.00'	20.79'	11.04'	20.19'	S31°25'13"E
65B	15°52'05"	375.00'	103.06'	52.26'	103.52'	S15°31'59"E

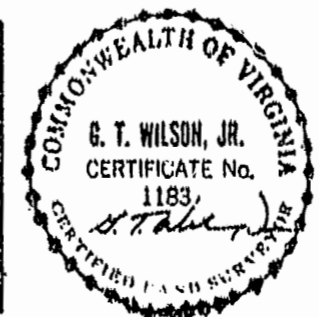


11:49 AM  
 10/15/99  
 10/15/99  
 10/15/99



5248 Olde Towne Road, Suite 1  
 Williamsburg, Virginia 23188  
 (804) 253-0040  
 Fax (804) 220-8994

CORRECTED  
 PLAT OF  
**FORD'S COLONY**  
**@ WILLIAMSBURG**  
 SECTION XVI-A, LOTS 23-36 & LOTS 58-65  
 BERKELEY DISTRICT    JAMES CITY COUNTY    VIRGINIA



No.	DATE	REVISION / COMMENT / NOTE	BY
1	5/9/94	REVISED SECTION NUMBER ONLY - SEC. 10 TO SEC. XVI-A	ATW

Designed SOW	Drawn ERT
Scale 1"=100'	Date OCT. 1999
Project No. 5652	
Drawing No. 2 of 2	