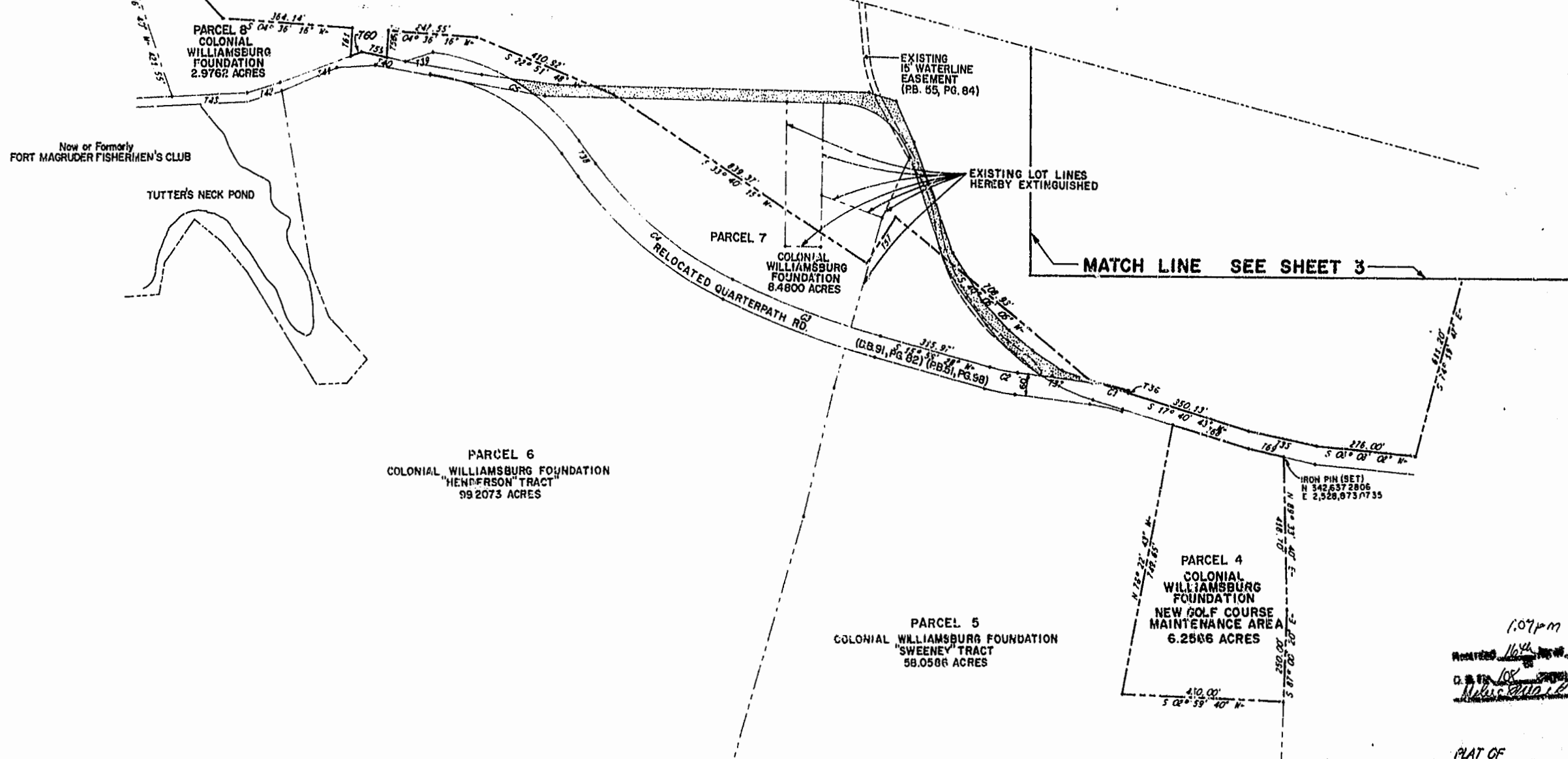




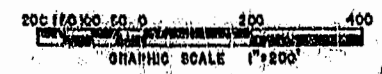
MATCH LINE SEE SHEET 2

MATCH LINE SEE SHEET 3



1.07 p.m.  
 REVISION 10/24/99  
 D. S. P. 108  
 [Signature]

PLAT OF  
 NEW GOLF COURSE PARCEL  
 FOR  
 COLONIAL WILLIAMSBURG FOUNDATION  
 SITUATED IN THE  
 CITY OF WILLIAMSBURG, VIRGINIA  
 DATE: MARCH 1999 SCALE: 1" = 200'  
 Langley and McDonald, P.C.  
 ENGINEERS PLANNERS SURVEYORS  
 VIRGINIA BEACH AND WILLIAMSBURG, VIRGINIA



REV. 3-23-93

SHEET 4 OF 4

944FW