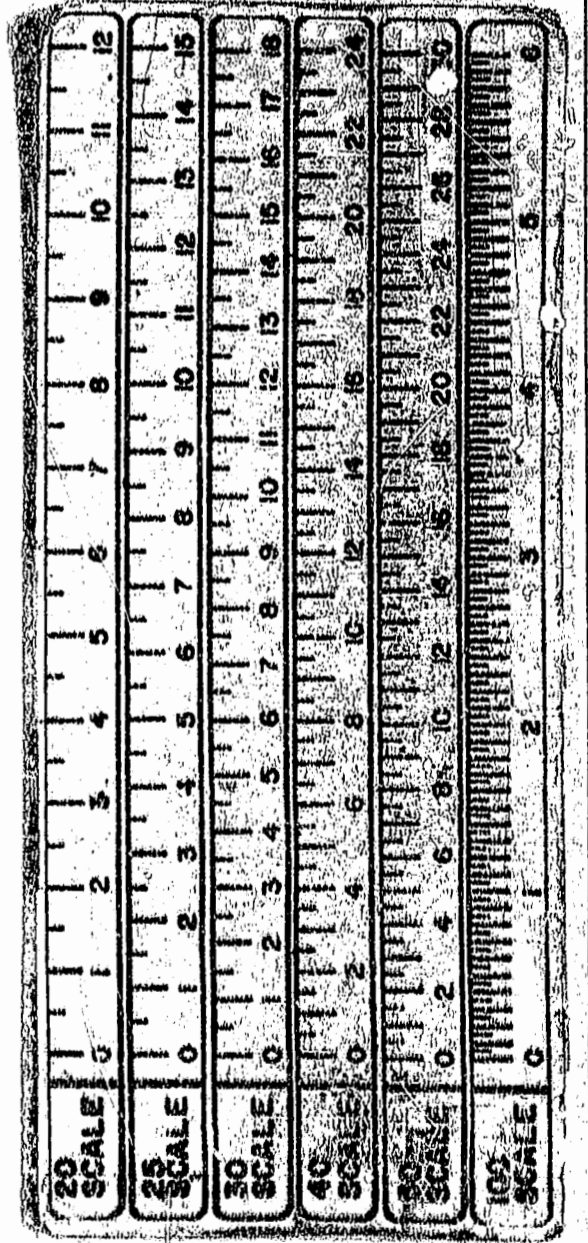
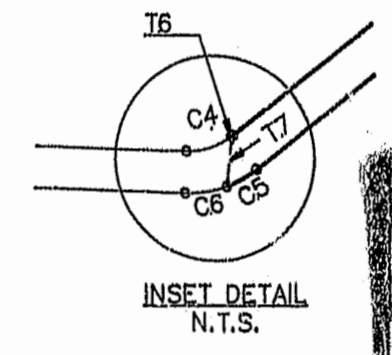
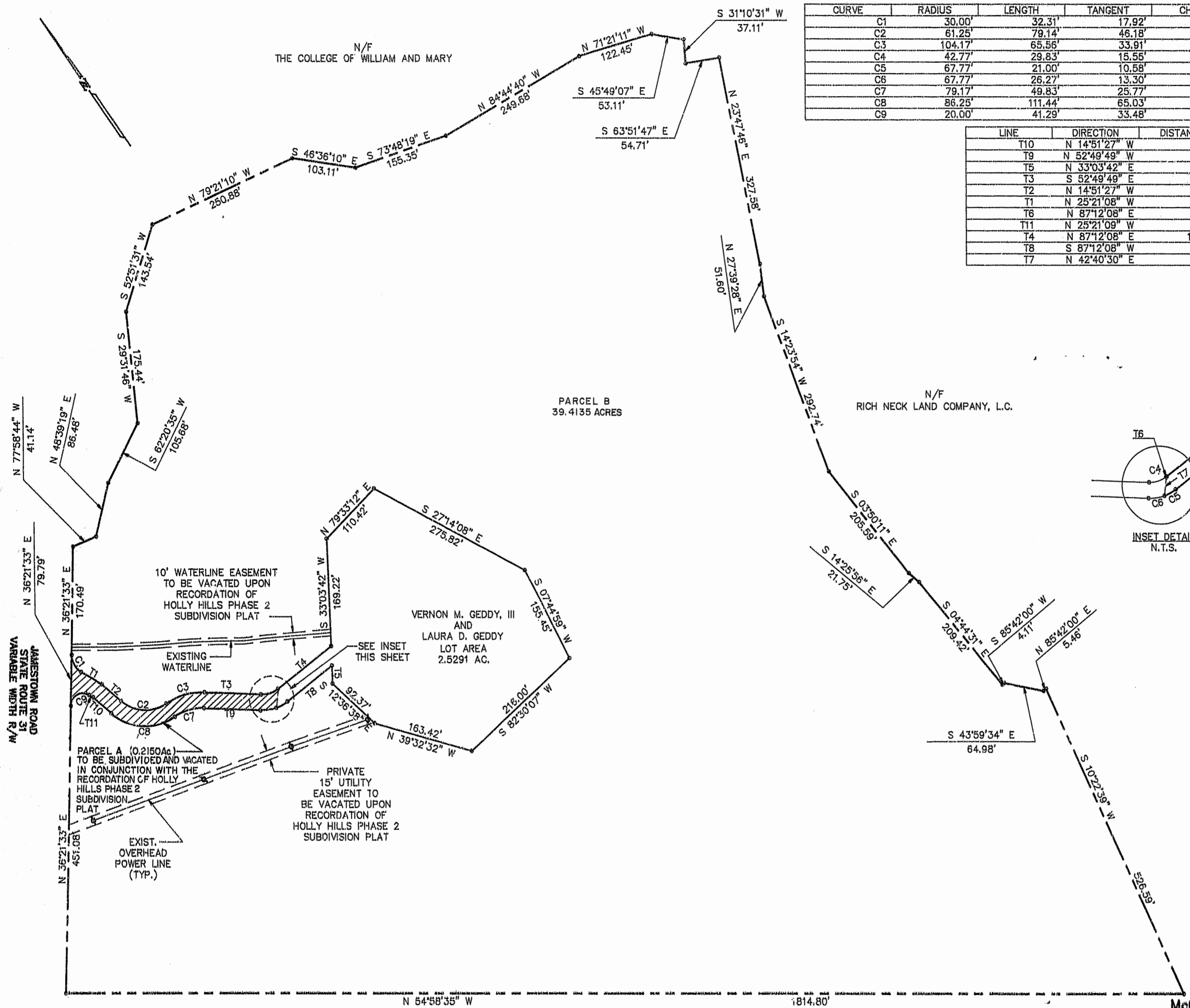


CURVE	RADIUS	LENGTH	TANGENT	CHORD	BEARING	DELTA
C1	30.00'	32.31'	17.92'	30.77'	S 05°30'13" W	61°42'41"
C2	61.25'	79.14'	46.18'	73.75'	S 51°52'25" E	74°01'56"
C3	104.17'	65.56'	33.91'	64.48'	N 70°51'36" W	36°03'34"
C4	42.77'	29.83'	15.55'	29.23'	S 72°48'50" E	39°58'03"
C5	67.77'	21.00'	10.58'	20.92'	S 83°55'15" E	17°45'14"
C6	67.77'	26.27'	13.30'	26.11'	S 63°56'13" E	22°12'49"
C7	79.17'	49.83'	25.77'	49.01'	N 70°51'36" W	36°03'34"
C8	86.25'	111.44'	65.03'	103.85'	S 51°52'25" E	74°01'56"
C9	20.00'	41.29'	33.48'	34.34'	N 84°29'47" W	118°17'19"

LINE	DIRECTION	DISTANCE
T10	N 14°51'27" W	38.47'
T9	N 52°49'49" W	92.31'
T5	N 33°03'42" E	26.16'
T3	S 52°49'49" E	92.31'
T2	N 14°51'27" W	40.76'
T1	N 25°21'08" W	38.87'
T6	N 87°12'08" E	1.47'
T11	N 25°21'09" W	7.56'
T4	N 87°12'08" E	109.58'
T8	S 87°12'08" W	91.51'
T7	N 42°40'30" E	31.05'



JAMESTOWN ROAD
STATE ROUTE 31
VARIABLE WIDTH R/W

N/F
THE COLLEGE OF WILLIAM AND MARY

PARCEL B
39.4135 ACRES

N/F
RICH NECK LAND COMPANY, L.C.

10' WATERLINE EASEMENT
TO BE VACATED UPON
RECORDATION OF
HOLLY HILLS PHASE 2
SUBDIVISION PLAT

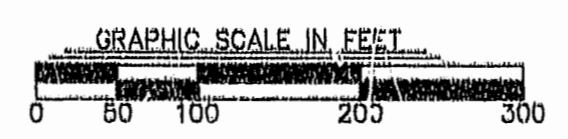
VERNON M. GEDDY, III
AND
LAURA D. GEDDY
LOT AREA
2.5291 AC.

PARCEL A (0.2150 ac)
TO BE SUBDIVIDED AND VACATED
IN CONJUNCTION WITH THE
RECORDATION OF HOLLY
HILLS PHASE 2
SUBDIVISION
PLAT

PRIVATE
15' UTILITY
EASEMENT TO
BE VACATED UPON
RECORDATION OF
HOLLY HILLS PHASE 2
SUBDIVISION PLAT

EXIST.
OVERHEAD
POWER LINE
(TYP.)

N/F
THE SISTERS OF MERCY
IN THE
CITY OF PHILADELPHIA
(WALSINGHAM ACADEMY)



12:02 pm
Recorded 3rd day of December, 1993
D. B. No. 106
D. B. No. 106

PLAT OF 39.4135 ACRES
TO BE CONVEYED TO
McCALE DEVELOPMENT CORPORATION
BEING A SUBDIVISION OF PROPERTY OF
RICH NECK LAND COMPANY, L.C.
WILLIAMSBURG, VIRGINIA
11/16/93 SCALE: 1"=100'
LANGLEY and McDONALD, P.C.
ENGINEERS-PLANNERS-SURVEYORS
LANDSCAPE ARCHITECTS-ENVIRONMENTAL CONSULTANTS
VIRGINIA BEACH AND WILLIAMSBURG, VIRGINIA
SHEET 2 OF 2