

LOCATION MAP  
Scale: 1" = 2000'

**CANNON'S CERTIFICATION**

THE SUBDIVISION OF LAND SHOWN ON THIS PLAN AND KNOWN AS THE MEWS AT WILLIAMSBURG, PHASE VI IS WITH THE FREE CONSENT AND IN ACCORDANCE WITH THE DESIRE OF THE UNDERSIGNED OWNERS, PROPRIETORS AND OR TRUSTEES.

11-12-93  
DATE

*[Signature]*  
NAME

**CERTIFICATE OF AUTHORIZATION**

STATE OF VIRGINIA

CITY/COUNTY OF JAMES CITY I, **WILLIAM F. MATOZ**, NOTARY PUBLIC IN AND FOR THE CITY/COUNTY AND STATE AFORESAID, DO HEREBY CERTIFY THAT THE PERSONS WHOSE NAMES ARE SIGNED TO THE FOREGOING WRITING HAVE ACKNOWLEDGED THE SAME BEFORE ME, IN THE CITY/COUNTY AFORESAID, GIVEN UNDER MY NAME THIS 12th DAY OF NOVEMBER 1993 MY COMMISSION EXPIRES

*[Signature]*  
WILLIAM F. MATOZ  
SIGNATURE

**CERTIFICATE OF SOURCE OF TITLE**

THE PROPERTY SHOWN ON THIS PLAN WAS CONVEYED BY THE MEWS AT WILLIAMSBURG, INC. TO C. LEWIS WALTHIP, INC. BY DEED DATED FEBRUARY 11, 1987 AND RECORDED IN THE OFFICE OF THE CLERK OF THE CIRCUIT COURT OF THE COUNTY OF JAMES CITY IN DEED BOOK 731 PAGE 239.

**ENGINEER OR SURVEYOR'S CERTIFICATE**

I HEREBY CERTIFY THAT TO THE BEST OF MY KNOWLEDGE OR BELIEF, THIS PLAN COMPLIES WITH ALL OF THE REQUIREMENTS OF THE BOARD OF SURVEYORS AND MEASUREMENTS OF THE COUNTY OF JAMES CITY, VIRGINIA, REGARDING THE PLATTING OF SUBDIVISIONS WITHIN THE COUNTY.

NOV 13 1993  
DATE

*[Signature]*  
G.T. WILSON, JR. C.E.S.

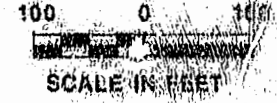
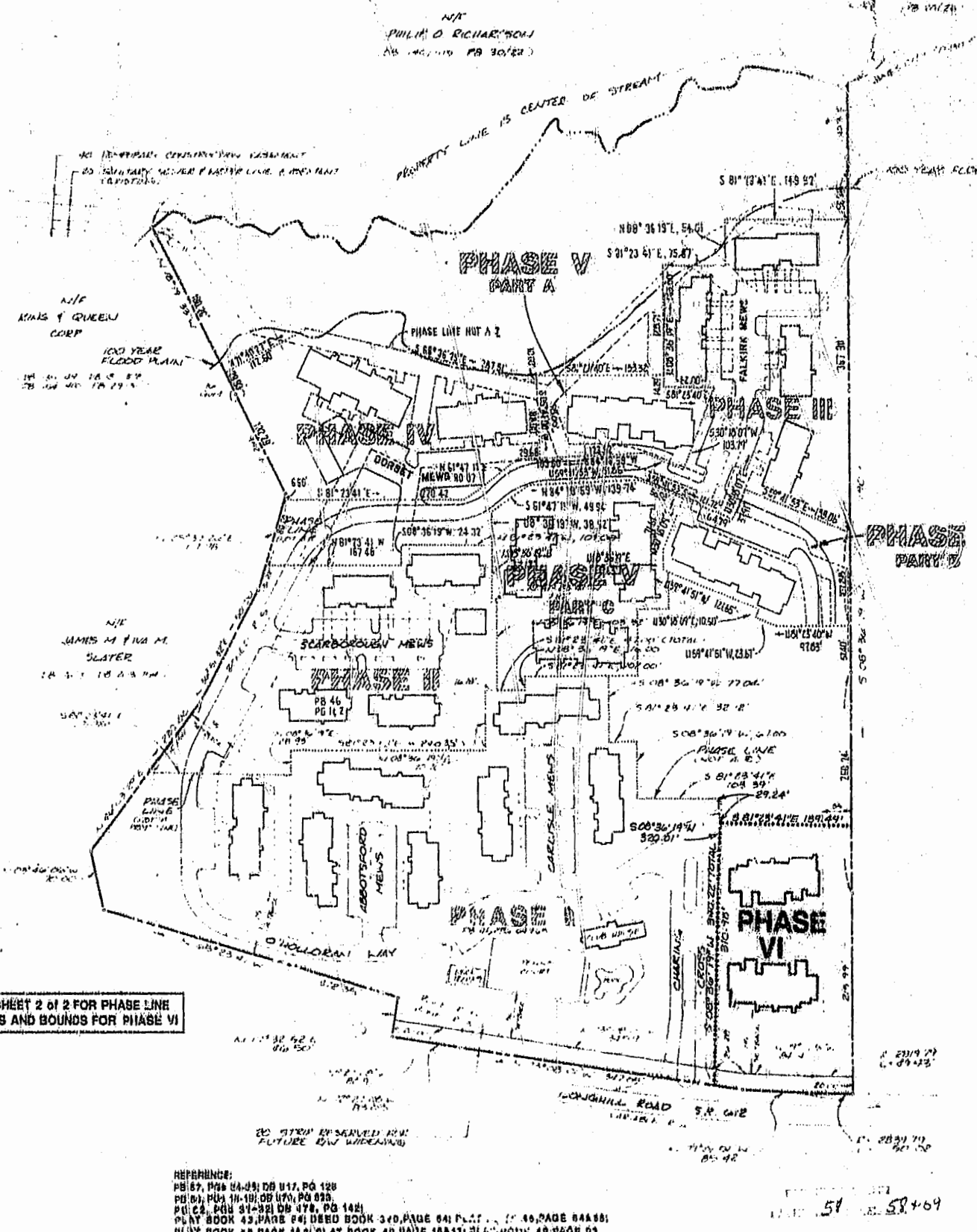
**CERTIFICATE OF APPROVAL**

THIS SUBDIVISION IS APPROVED BY THE UNDERSIGNED IN ACCORDANCE WITH EXISTING SUBDIVISION REGULATIONS AND MAY BE ADMITTED TO RECORD.

DATE  
*[Signature]*

VIRGINIA DEPARTMENT OF  
LOCALITY  
*[Signature]*  
SUBDIVISION AGENT OF  
JAMES CITY COUNTY

NOTE: SEE SHEET 2 OF 2 FOR PHASE LINE MEASUREMENTS AND BOUNDS FOR PHASE VI



**GENERAL NOTES**

1. ALL LOTS ARE TO BE PROVIDED WITH WATER AND SEWER SERVICE BY THE JAMES CITY SERVICE AUTHORITY.
2. ALL STREETS ARE TO BE PRIVATELY OWNED AND MAINTAINED.
3. ALL LOTS ARE WITHIN THE ORIGINAL BOUNDARY SURVEY OF RECORD.
4. \*\*\*\*\* DATES PHASE LINE

NOTE: THE MEWS AT WILLIAMSBURG, INC. RESERVES RIGHTS-OF-WAY AND EASEMENTS FOR UTILITIES, SIDEWALKS, EXTERIOR MAINTENANCE AND SLOPE AND DRAINAGE OVER AND ACROSS EACH OF THE LOTS, PARCELS, AND STREETS SHOWN HEREON. THE MEWS AT WILLIAMSBURG, INC. ALSO RESERVES ON BEHALF OF ITSELF AND ALL PRESENT AND FUTURE OWNERS OF UNITS, THEIR FAMILIES AND HEIRS, EASEMENT OVER AND THROUGH PROPERTIES SHOWN HEREON FOR PURPOSES OF ACCESS, EGRESS, AND ROADS.

THE RECORDING OF THIS PLAN BY THE MEWS AT WILLIAMSBURG, INC. WITH SUCCESSORS' ASSIGNS, SHALL NOT BE CONSTRUED AS A DEDICATION TO THE PUBLIC OF ANY STREET, ROAD, WAY, VOUCHER OR OTHER PORTION OF THE LAND SHOWN AND DESCRIBED IN THIS PLAN.

A LINE RUNNING LONGITUDINALLY DOWN THE CENTER OF A PARTY WALL, AS THAT TERM IS DEFINED IN THE DECLARATION OF COVENANTS, CONDITIONS AND RESTRICTIONS OF THE MEWS AT WILLIAMSBURG REFERRED TO BELOW, SHALL FORM THE LOT LINE FOR THE ADJOINING LOTS ON EITHER SIDE OF SUCH PARTY WALL, NOTWITHSTANDING THE FACT THAT THESE PLATS MIGHT SHOW SUCH LOT LINES BEING SITUATED ELSEWHERE.

THE LANDS DEPICTED AND SHOWN ON THIS PLAN ARE SUBJECT TO THE PROVISIONS OF THE DECLARATION OF COVENANTS, CONDITIONS AND RESTRICTIONS OF THE MEWS AT WILLIAMSBURG, RECORDED IN THE CLERK'S OFFICE OF THE CIRCUIT COURT OF JAMES CITY COUNTY, VIRGINIA.

FOR PURPOSES OF COMPLIANCE WITH BUILDING FOOTPRINT REQUIREMENTS OF JAMES CITY COUNTY, BUILDING FOOTPRINTS, BUILDING RESTRICTION LINES, CONSTRUCTION AREA LINES, AND DISTANCE LINES REFERRED TO THEREIN ARE HEREBY CONTRACTED WITH THE LOT PROPERTY LINES.

**AREA TABULATION**

AREA OF LOTS FOR UNITS 103-110	24,807 S.F.	0.570 Ac.
TOTAL COMMON AREA	25,688 S.F.	0.589 Ac.
TOTAL AREA PHASE VI	50,476 S.F.	1.159 Ac.

REFERENCES:  
 PB 67, PG 64-65; DB 117, PG 120  
 PB 68, PG 14-15; DB 170, PG 82  
 PL 68, PG 37-38; DB 178, PG 142  
 PL 68, PG 39; DB 178, PG 142  
 PL 68, PG 40; DB 178, PG 142  
 PL 68, PG 41; DB 178, PG 142  
 PL 68, PG 42; DB 178, PG 142  
 PL 68, PG 43; DB 178, PG 142  
 PL 68, PG 44; DB 178, PG 142  
 PL 68, PG 45; DB 178, PG 142  
 PL 68, PG 46; DB 178, PG 142  
 PL 68, PG 47; DB 178, PG 142  
 PL 68, PG 48; DB 178, PG 142  
 PL 68, PG 49; DB 178, PG 142  
 PL 68, PG 50; DB 178, PG 142  
 PL 68, PG 51; DB 178, PG 142  
 PL 68, PG 52; DB 178, PG 142  
 PL 68, PG 53; DB 178, PG 142  
 PL 68, PG 54; DB 178, PG 142  
 PL 68, PG 55; DB 178, PG 142  
 PL 68, PG 56; DB 178, PG 142  
 PL 68, PG 57; DB 178, PG 142  
 PL 68, PG 58; DB 178, PG 142  
 PL 68, PG 59; DB 178, PG 142  
 PL 68, PG 60; DB 178, PG 142  
 PL 68, PG 61; DB 178, PG 142  
 PL 68, PG 62; DB 178, PG 142  
 PL 68, PG 63; DB 178, PG 142  
 PL 68, PG 64; DB 178, PG 142  
 PL 68, PG 65; DB 178, PG 142  
 PL 68, PG 66; DB 178, PG 142  
 PL 68, PG 67; DB 178, PG 142  
 PL 68, PG 68; DB 178, PG 142  
 PL 68, PG 69; DB 178, PG 142  
 PL 68, PG 70; DB 178, PG 142  
 PL 68, PG 71; DB 178, PG 142  
 PL 68, PG 72; DB 178, PG 142  
 PL 68, PG 73; DB 178, PG 142  
 PL 68, PG 74; DB 178, PG 142  
 PL 68, PG 75; DB 178, PG 142  
 PL 68, PG 76; DB 178, PG 142  
 PL 68, PG 77; DB 178, PG 142  
 PL 68, PG 78; DB 178, PG 142  
 PL 68, PG 79; DB 178, PG 142  
 PL 68, PG 80; DB 178, PG 142  
 PL 68, PG 81; DB 178, PG 142  
 PL 68, PG 82; DB 178, PG 142  
 PL 68, PG 83; DB 178, PG 142  
 PL 68, PG 84; DB 178, PG 142  
 PL 68, PG 85; DB 178, PG 142  
 PL 68, PG 86; DB 178, PG 142  
 PL 68, PG 87; DB 178, PG 142  
 PL 68, PG 88; DB 178, PG 142  
 PL 68, PG 89; DB 178, PG 142  
 PL 68, PG 90; DB 178, PG 142  
 PL 68, PG 91; DB 178, PG 142  
 PL 68, PG 92; DB 178, PG 142  
 PL 68, PG 93; DB 178, PG 142  
 PL 68, PG 94; DB 178, PG 142  
 PL 68, PG 95; DB 178, PG 142  
 PL 68, PG 96; DB 178, PG 142  
 PL 68, PG 97; DB 178, PG 142  
 PL 68, PG 98; DB 178, PG 142  
 PL 68, PG 99; DB 178, PG 142  
 PL 68, PG 100; DB 178, PG 142

**AES**, a professional corporation  
 5248 Olde Towne Road, Suite 1  
 Williamsburg, Virginia 23185  
 (804) 253-0040  
 Engineering, Planning, Surveying

**PLAT OF SUBDIVISION IN THE MEWS AT WILLIAMSBURG**  
 PHASE VI - UNITS 103-110  
 OWNER: C. LEWIS WALTHIP DEVELOPMENT, INC.  
 BERKELEY DISTRICT JAMES CITY COUNTY VIRGINIA

COMMONWEALTH OF VIRGINIA  
 G. T. WILSON, JR.  
 CERTIFICATE No. 1183  
 SURVEYOR

NO.	DATE	REVISION / COMMENT / NOTE	BY

Designed by: AEB  
 Drawn by: AEB  
 Scale: 1"=100'  
 Date: NOV, 1993  
 Project No.: 5858  
 Drawing No.: 1 of 2