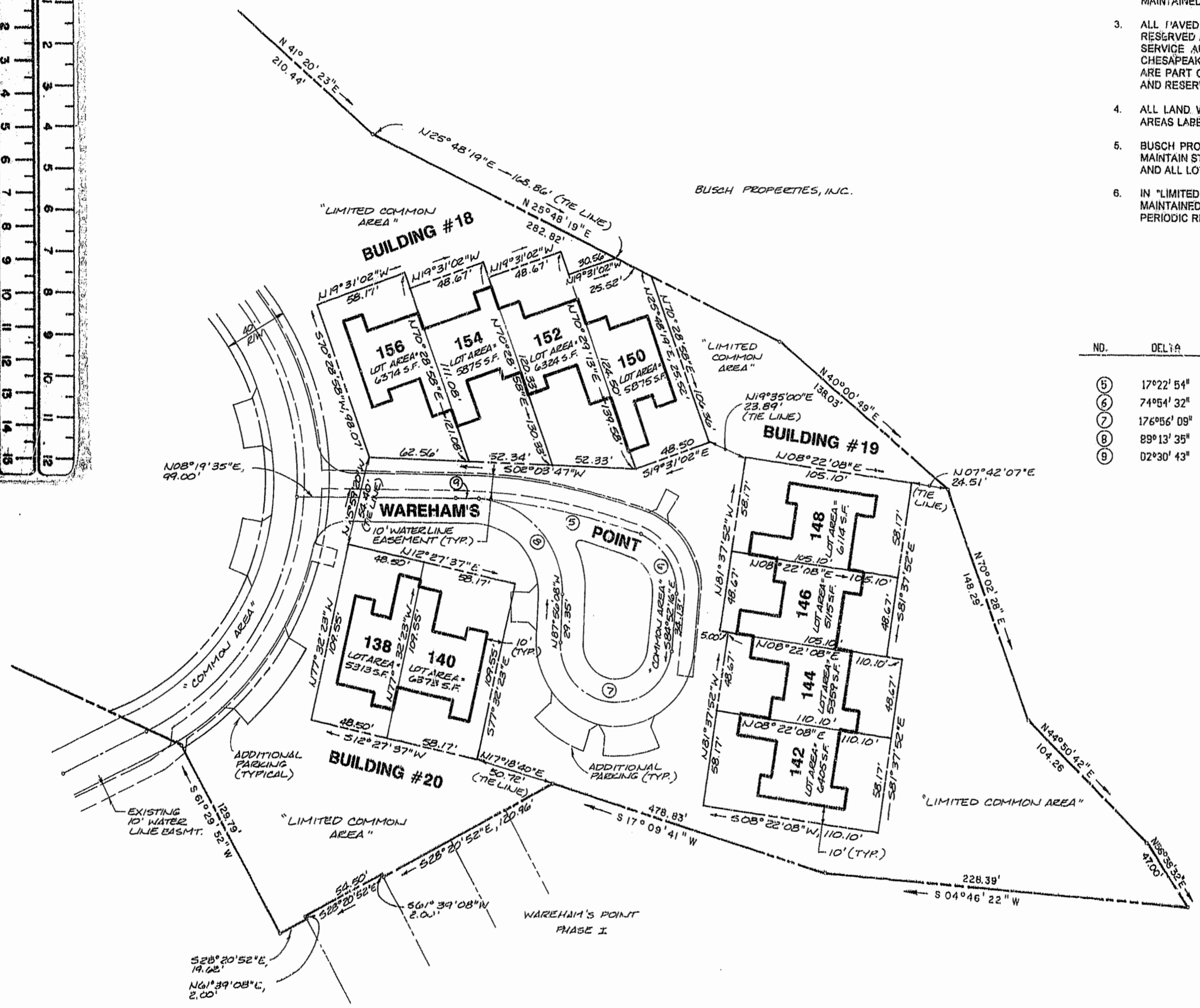


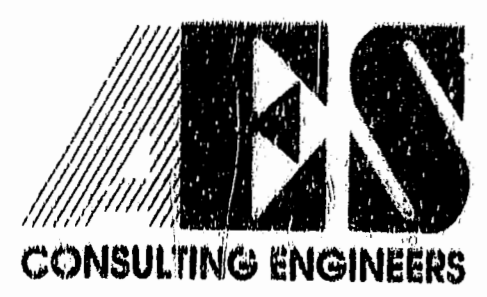
- NOTES:
1. USE OF COMMON AREA IS RESERVED IN ACCORDANCE WITH DECLARATION OF COVENANTS, CONDITION AND RESTRICTIONS APPLYING TO WAREHAM'S POINT.
  2. LATERALS FOR UTILITY SERVICE MAY BE INSTALLED ACROSS AND MAINTAINED WITHIN LIMITED COMMON AREAS AND COMMON AREAS.
  3. ALL PAVED AREAS TO BE UTILIZED FOR VEHICULAR ACCESS ARE RESERVED AS EASEMENTS FOR BUSCH PROPERTIES, INC., JAMES CITY SERVICE AUTHORITY, CITY OF NEWPORT NEWS, VIRGINIA POWER, CHESAPEAKE AND POTOMAC TELE. CO. AND VIRGINIA NATURAL GAS AND ARE PART OF COMMON AREAS AND LIMITED COMMON AREAS OWNED AND RESERVED BY BUSCH PROPERTIES, INC.
  4. ALL LAND WITHIN WAREHAM'S POINT EXCLUDING ROADS, LOTS AND AREAS LABELED "COMMON AREA" IS LIMITED COMMON AREA.
  5. BUSCH PROPERTIES, INC. RESERVES THE RIGHT TO CONSTRUCT AND MAINTAIN STORM DRAINAGE FACILITIES ACROSS THAT PORTION OF ANY AND ALL LOTS NOT OCCUPIED BY DWELLING UNITS.
  6. IN "LIMITED COMMON AREAS", VISTAS CURRENTLY EXISTING TO BE MAINTAINED BY WAREHAM'S POINT PARCEL IN ACCORDANCE WITH PERIODIC REQUIREMENTS.

CENTERLINE CURVE DATA

NO.	DELTA	RADIUS	LENGTH	TANGENT	CHORD	CHORD BEARING
⑤	17°22'54"	342.14'	103.79'	52.30'	103.40'	N11°31'44"E
⑥	74°54'32"	35.00'	45.76'	26.81'	42.57'	N57°40'28"E
⑦	176°56'09"	35.00'	108.08'	1308.60'	69.98'	S03°35'49"W
⑧	89°13'35"	55.00'	85.65'	54.26'	77.26'	S47°27'06"W
⑨	02°30'43"	342.14'	15.00'	7.50'	15.00'	N01°35'01"E



NOTE: ALL LOTS TO BE SERVED BY PUBLIC WATER AND PUBLIC SEWER.



5248 Olde Towne Road, Suite 1  
 Williamsburg, Virginia 23188  
 (804) 253-0040  
 Fax (804) 220-8994

PLAT OF SUBDIVISION  
**WAREHAM'S POINT  
 PHASE III**  
 OWNER/DEVELOPER: BUSCH PROPERTIES, INC.  
 JAMES CITY COUNTY VIRGINIA



No.	DATE	REVISION / COMMENT / NOTE	BY

Designed	Drawn
Scale	Date
Project No.	
7753	
Drawing No.	
2 OF 2	