

WE HEREBY CERTIFY THAT WE HAVE SURVEYED ALL OF THE UNITS ON PORTIONS THEREOF AND DO FURTHER CERTIFY THAT THESE PLANS ARE ACCURATE AND THEY COMPLY WITH SECTION 55-79.10(B) OF THE CODE OF VIRGINIA, AS AMENDED. ALL STRUCTURES ARE SUBSTANTIALLY COMPLETE.

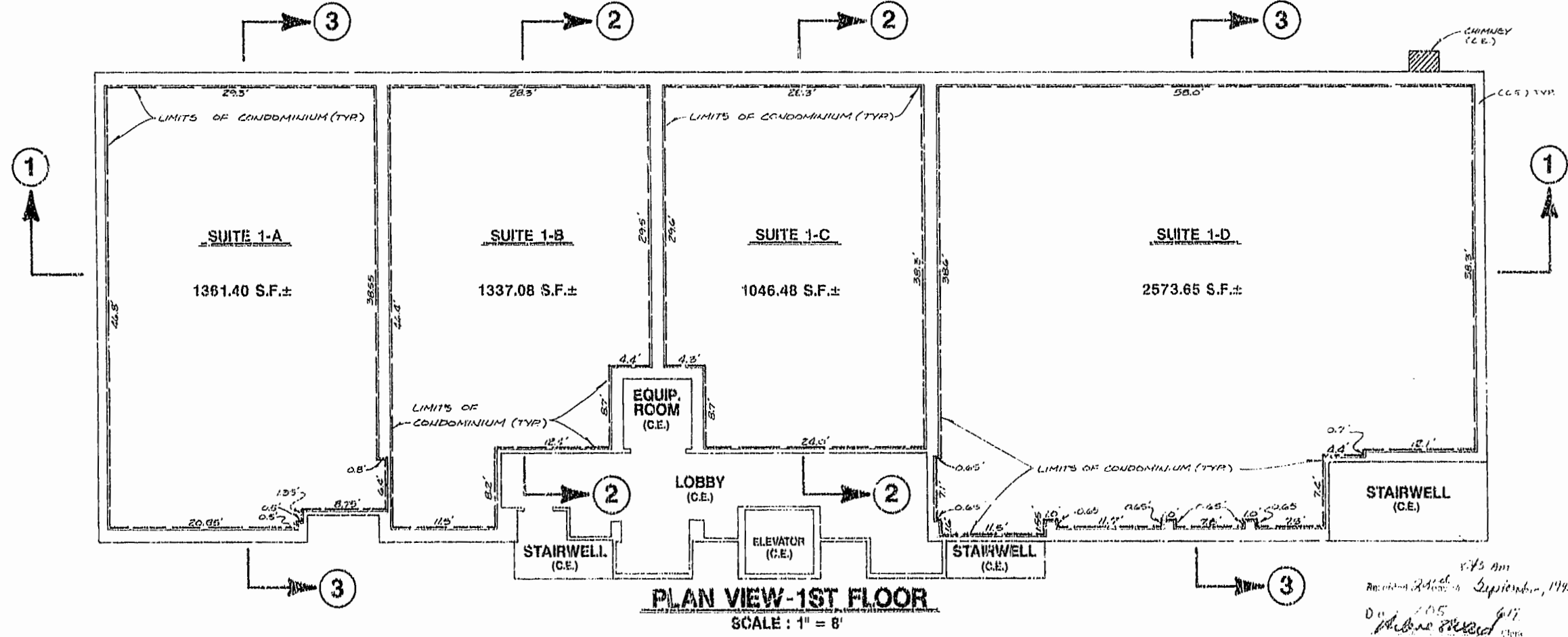
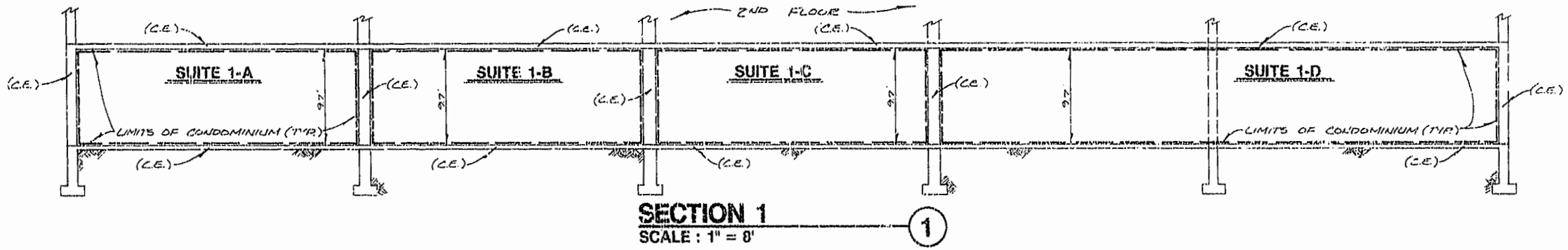
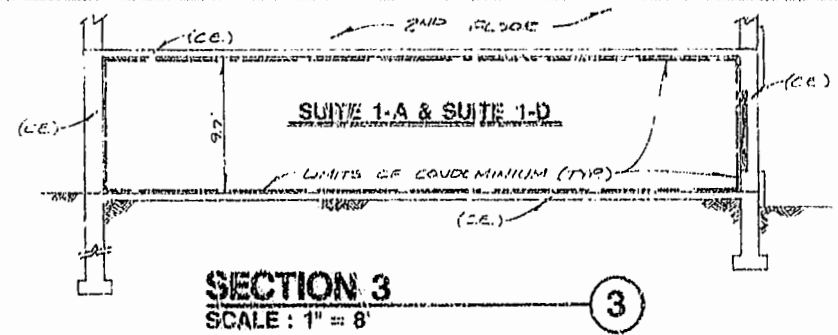
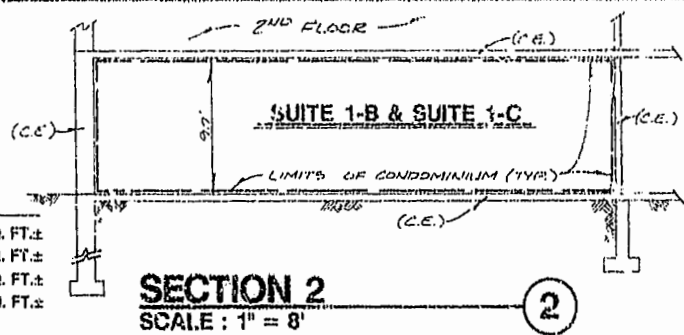
AES CONSULTING ENGINEERS

BY: G. T. Wilson, Jr.
G. T. WILSON, JR., C.E.S.

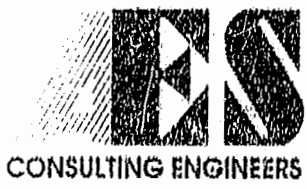
(C.E.) = COMMON ELEMENT

AREA TABULATION - 1ST LEVEL

| | |
|--|-------------------------|
| SUITE 1-A | 1361.40 SQ. FT.± |
| SUITE 1-B | 1337.08 SQ. FT.± |
| SUITE 1-C | 1046.48 SQ. FT.± |
| SUITE 1-D | 2573.65 SQ. FT.± |
| COMMON ELEMENTS (C.E.) - WALLS, LOBBY, STAIRS, EQUIPMENT ROOM, ELEVATOR, CHIMNEY | 1180.94 SQ. FT.± |
| TOTAL AREA 1ST LEVEL | 7505.55 SQ. FT.± |



8/15 AM
Revised 2/23/01
D. Wilson
Checked



5248 Old Towne Road, Suite 1
Williamsburg, Virginia 23188
(804) 253-0040
Fax (804) 220-8994

EXHIBIT B
WILLIAMSBURG PROFESSIONAL CENTRE CONDOMINIUMS
OWNER/DEVELOPER: ALVIN P. ANDERSON, TRUSTEE
CITY OF WILLIAMSBURG VIRGINIA



| No. | DATE | REVISION / COMMENT / NOTE | BY |
|-----|------|---------------------------|----|
| | | | |
| | | | |
| | | | |

| | |
|-----------------------|------------------|
| Designed by AES | Drawn by FWH |
| Scale NOTED | Date 12/23/01 |
| Project No. 7240 | |
| Drawing No. 2 OF 4 | |

