

POWHATAN PLANTATION PHASE VIIC

JAMES CITY COUNTY, VIRGINIA
DATE: AUGUST 10, 1993 SCALE: 1"=200'

SCALE	0	1	2	3	4	5	6	7	8	9	10	11	12
SCALE	0	2	4	6	8	10	12	14	16	18	20	22	24
SCALE	0	2	4	6	8	10	12	14	16	18	20	22	24
SCALE	0	2	4	6	8	10	12	14	16	18	20	22	24
SCALE	0	2	4	6	8	10	12	14	16	18	20	22	24
SCALE	0	2	4	6	8	10	12	14	16	18	20	22	24

N/F POWHATAN ENTERPRISES, INC.

POWHATAN ASSOCIATES

POWHATAN ASSOCIATES

N/F T.D. WALTRIP

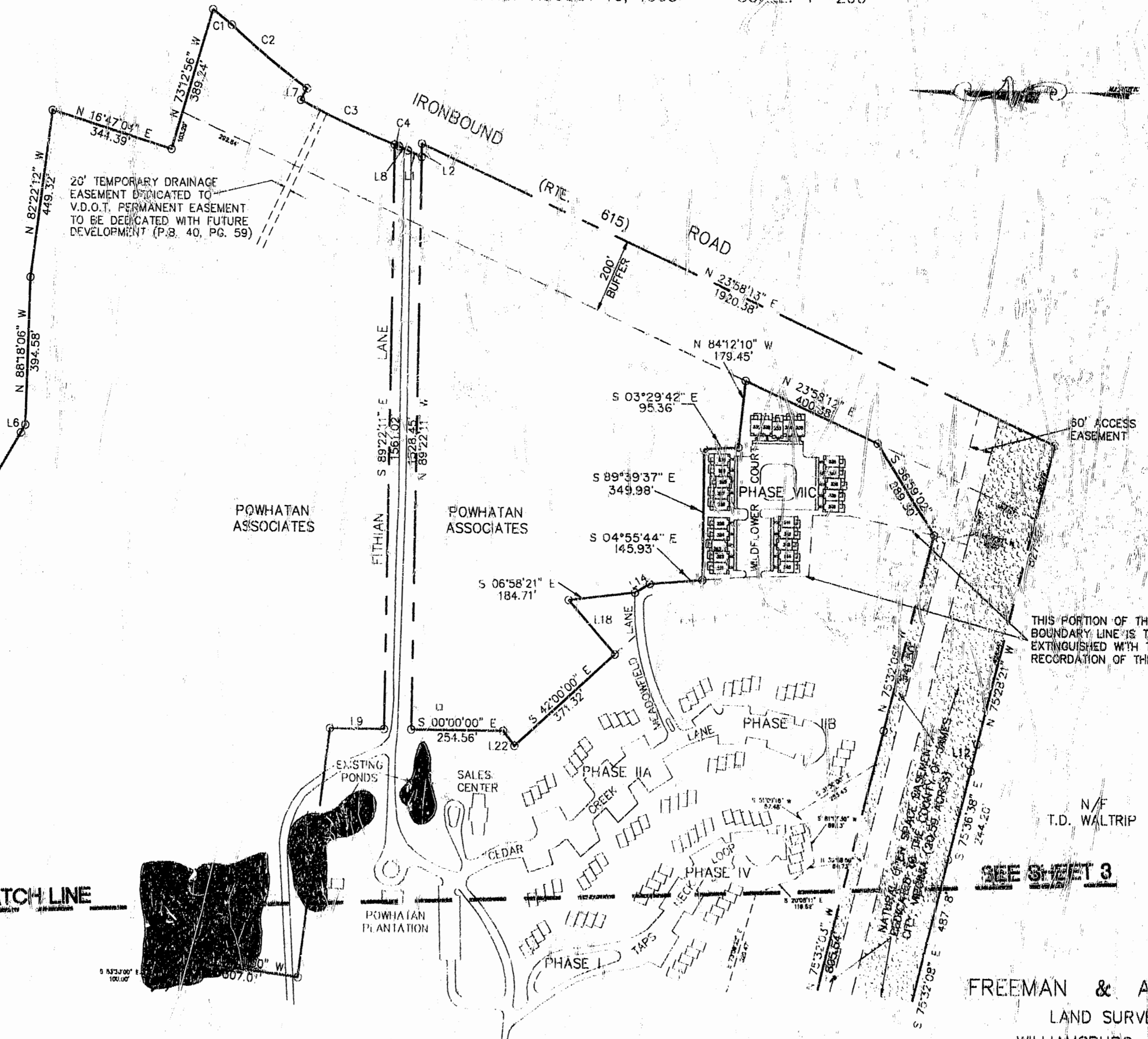
MATCH LINE

SEE SHEET 3

FREEMAN & ASSOCIATES
LAND SURVEYORS
WILLIAMSBURG, VIRGINIA

PHASE I THRU VI, VII & VIIC
102.24 TOTAL ACRES

SHEET 2 OF 3



11:24 am
Received 30th of August 1993
62 102