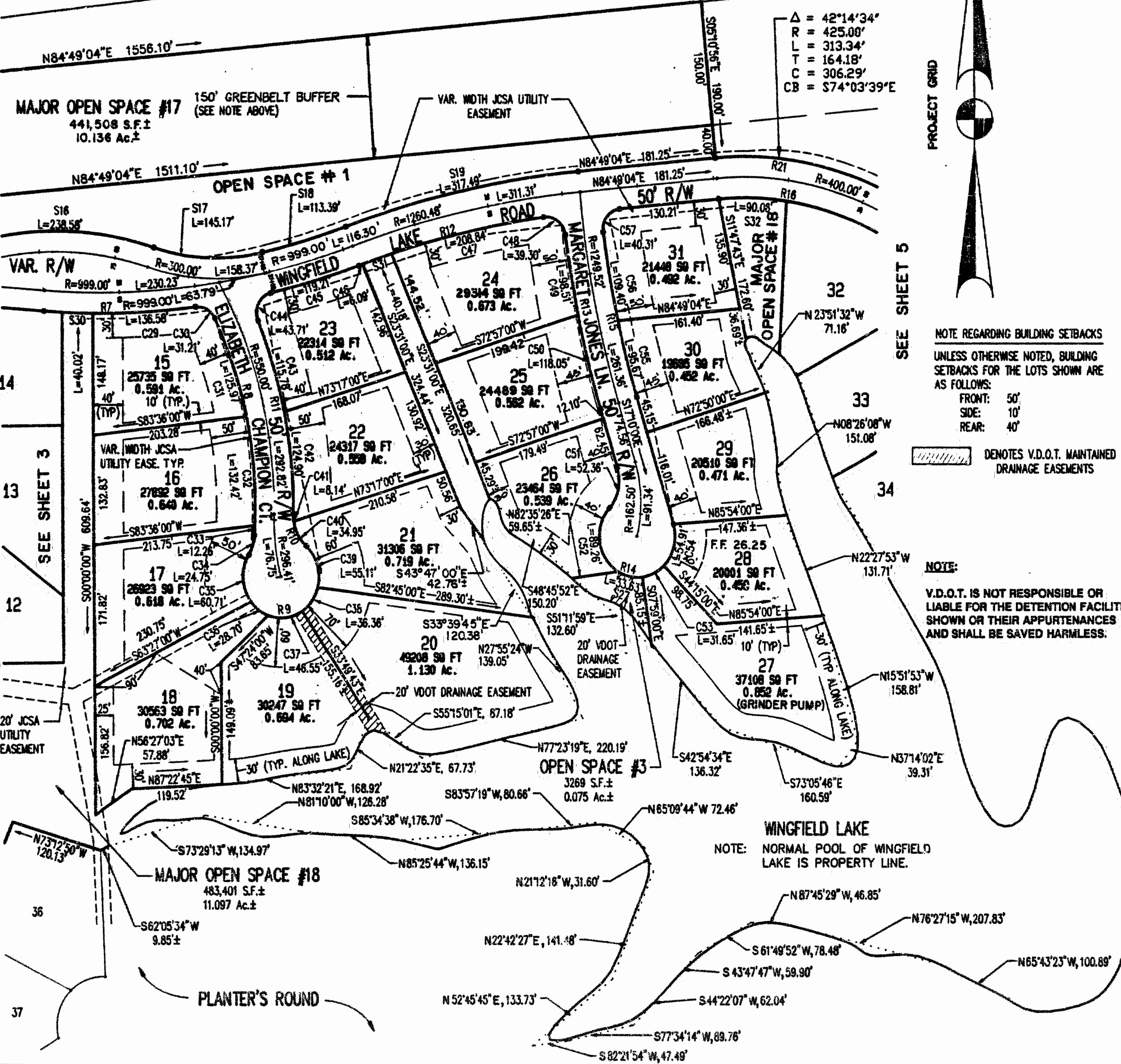


150' GREENBELT BUFFER ALONG THE PROPERTY'S ROUTE 5 FRONTAGE (EXCLUSIVE OF RIGHT-OF-WAY DEDICATED HEREIN FOR FUTURE IMPROVEMENTS OF ROUTE 5 TO A FOUR-LANE DIVIDED HIGHWAY) AS DEFINED BY THE GREENBELT CORRIDOR POLICY OF JAMES CITY COUNTY. THE "GREENBELT" BUFFERS SHALL BE UNDISTURBED AND EXCLUSIVE OF ANY LOTS, EXCEPT FOR APPROVED UTILITIES, DRAINAGE IMPROVEMENTS, JOGGING/NATURE TRAILS, COMMUNITY ENTRANCE ROADS AS SHOWN GENERALLY ON THE MASTER PLAN AND APPROPRIATE HISTORICAL, ENVIRONMENTAL, DIRECTIONAL, AND COMMUNITY IDENTIFICATION SIGNAGE AS APPROVED BY THE PLANNING COMMISSION.



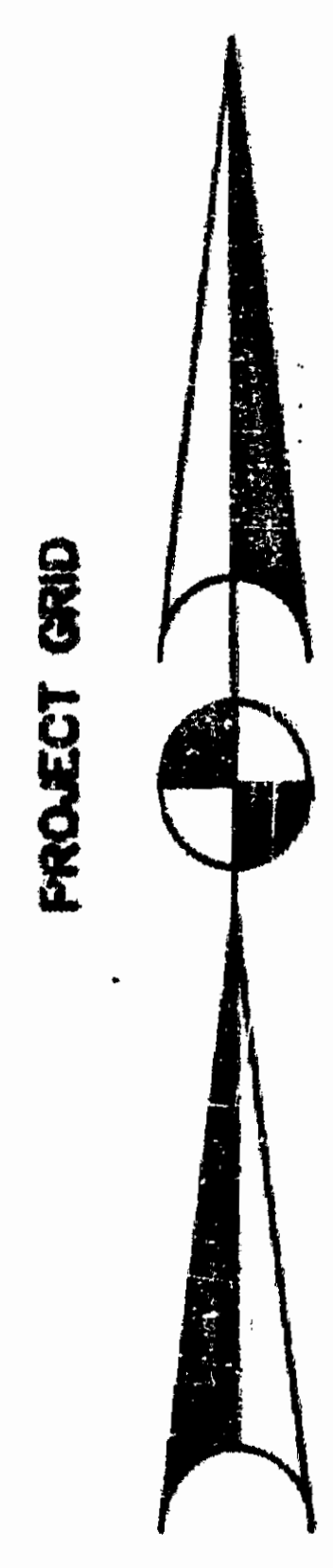
ROUTE 5 JOHN TYLER HIGHWAY

PREVIOUS R/W DEDICATION TO JAMES CITY COUNTY P.B. 53, PG. 81-89



LOT CURVE DATA TABLE

Table with 7 columns: No., DELTA, RADIUS, LENGTH, TANGENT, CHORD, CHORD BEARING. Lists curve data for lots C29 through C57.



SEE SHEET 5

NOTE REGARDING BUILDING SETBACKS UNLESS OTHERWISE NOTED, BUILDING SETBACKS FOR THE LOTS SHOWN ARE AS FOLLOWS: FRONT: 50' SIDE: 10' REAR: 40'

DENOTES V.D.O.T. MAINTAINED DRAINAGE EASEMENTS

RIGHT-OF-WAY CURVE TABLE

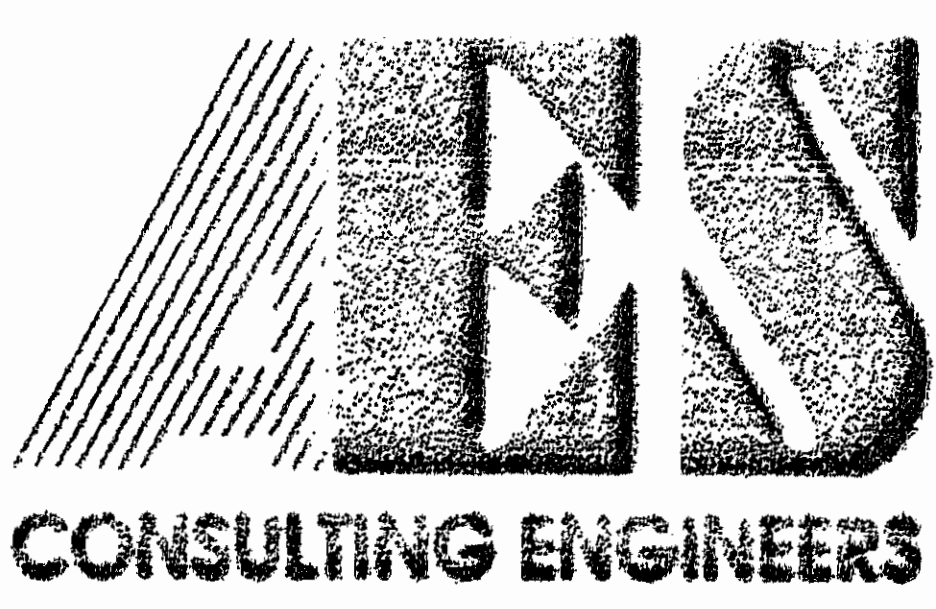
Table with 7 columns: No., DELTA, RADIUS, LENGTH, TANGENT, CHORD, CHORD BEARING. Lists curve data for lots R7 through R21.

NOTE: V.D.O.T. IS NOT RESPONSIBLE OR LIABLE FOR THE DETENTION FACILITIES SHOWN OR THEIR APPURTENANCES AND SHALL BE SAVED HARMLESS.

OPEN SPACE CURVE DATA TABLE

Table with 7 columns: No., DELTA, RADIUS, LENGTH, TANGENT, CHORD, CHORD BEARING. Lists curve data for lots S16 through S32.

NOTE: FOR THOSE LOTS ADJOINING PONDS OR LAKES, THE CORRESPONDING PROPERTY LINE BETWEEN THE LAKE OR POND AND THE LOT SHALL BE THE LINE OF NORMAL POOL OF THE ADJACENT POND OR LAKE. THE AREA OF EACH LOT IS CALCULATED TO THE LINE OF NORMAL POOL. THE DOTTED LINE REPRESENTS A TIE LINE (FOR CLOSURE) AND DOES NOT REPRESENT A PROPERTY LINE.



5248 Olde Towne Road, Suite 1 Williamsburg, Virginia 23188 (804) 253-0040 Fax (804) 220-8994

PLAT OF WINGFIELD LAKE THE GOVERNOR'S LAND. Includes 'At Two Rivers' signature and POWHATAN DISTRICT JAMES CITY COUNTY VIRGINIA.



Table with columns: No., DATE, REVISION / COMMENT / NOTE, BY. Includes handwritten notes and dates.

Table with columns: Designed, Drawn, Scale, Date, Project No., Drawing No. Values: 7173, 4 of 5.