

LOT CURVE DATA TABLE

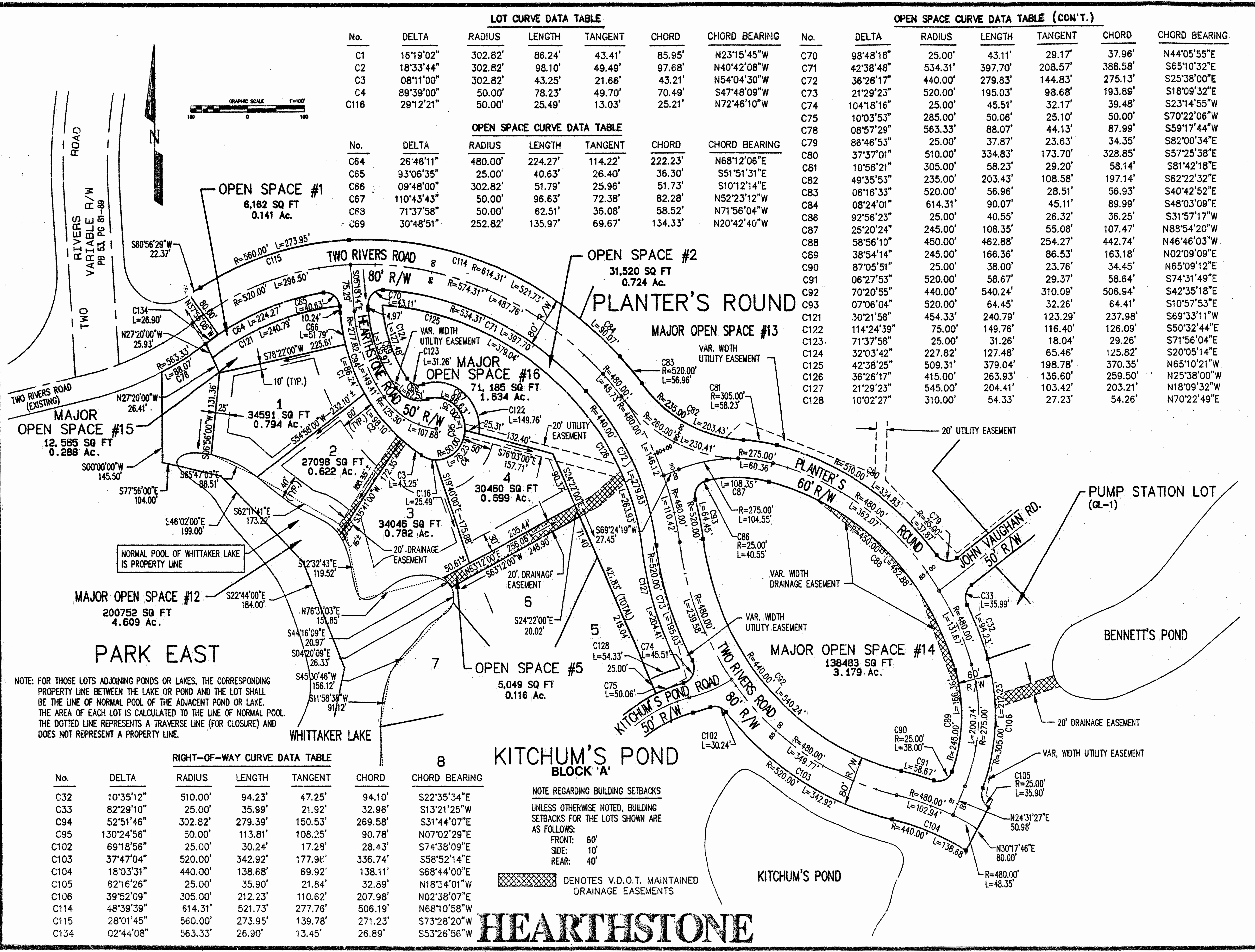
No.	DELTA	RADIUS	LENGTH	TANGENT	CHORD	CHORD BEARING
C1	16°19'02"	302.82'	86.24'	4.341'	85.95'	N23°15'45"W
C2	18°33'44"	302.82'	98.10'	49.49'	97.68'	N40°42'08"W
C3	08°11'00"	302.82'	43.25'	21.66'	43.21'	N54°04'30"W
C4	89°39'00"	50.00'	78.23'	49.70'	70.49'	S47°48'09"W
C116	29°12'21"	50.00'	25.49'	13.03'	25.21'	N72°46'10"W

OPEN SPACE CURVE DATA TABLE (CON'T.)

No.	DELTA	RADIUS	LENGTH	TANGENT	CHORD	CHORD BEARING
C70	98°48'18"	25.00'	43.11'	29.17'	37.96'	N44°05'55"E
C71	42°38'48"	534.31'	397.70'	208.57'	388.58'	S65°10'32"E
C72	36°26'17"	440.00'	279.83'	144.83'	275.13'	S25°38'00"E
C73	21°29'23"	520.00'	195.03'	98.68'	193.89'	S18°09'32"E
C74	104°18'16"	25.00'	45.51'	32.17'	39.48'	S23°14'55"W
C75	10°03'53"	285.00'	50.06'	25.10'	50.00'	S70°22'06"W
C78	08°57'29"	563.33'	88.07'	44.13'	87.99'	S59°17'44"W
C79	86°46'53"	25.00'	37.87'	23.63'	34.35'	S82°00'34"E
C80	37°37'01"	510.00'	334.83'	173.70'	328.85'	S57°25'38"E
C81	10°56'21"	305.00'	58.23'	29.20'	58.14'	S81°42'18"E
C82	49°35'53"	235.00'	203.43'	108.58'	197.14'	S62°22'32"E
C83	08°16'33"	520.00'	56.96'	28.51'	56.93'	S40°42'52"E
C84	08°24'01"	614.31'	90.07'	45.11'	89.99'	S48°03'09"E
C86	92°56'23"	25.00'	40.55'	26.32'	36.25'	S31°57'17"W
C87	25°20'24"	245.00'	108.35'	55.08'	107.47'	N88°54'20"W
C88	58°56'10"	450.00'	462.88'	254.27'	442.74'	N46°46'03"W
C89	38°54'14"	245.00'	166.36'	86.53'	163.18'	N02°09'09"E
C90	87°05'51"	25.00'	38.00'	23.76'	34.45'	N65°09'12"E
C91	06°27'53"	520.00'	58.67'	29.37'	58.64'	S74°31'49"E
C92	70°20'55"	440.00'	540.24'	310.09'	506.94'	S42°35'18"E
C93	07°06'04"	520.00'	64.45'	32.26'	64.41'	S10°57'53"E
C121	30°21'58"	454.33'	240.79'	123.29'	237.98'	S69°33'11"W
C122	114°24'39"	75.00'	149.76'	116.40'	126.09'	S50°32'44"E
C123	71°37'58"	25.00'	31.26'	18.04'	29.26'	S71°56'04"E
C124	32°03'42"	227.82'	127.48'	65.46'	125.82'	S20°05'14"E
C125	42°38'25"	509.31'	379.04'	198.78'	370.35'	N65°10'21"W
C126	36°26'17"	415.00'	263.93'	136.60'	259.50'	N25°38'00"W
C127	21°29'23"	545.00'	204.41'	103.42'	203.21'	N18°09'32"W
C128	10°02'27"	310.00'	54.33'	27.23'	54.26'	N70°22'49"E

OPEN SPACE CURVE DATA TABLE

No.	DELTA	RADIUS	LENGTH	TANGENT	CHORD	CHORD BEARING
C64	26°46'11"	480.00'	224.27'	114.22'	222.23'	N68°12'06"E
C65	93°06'35"	25.00'	40.63'	26.40'	36.30'	S51°51'31"E
C66	09°48'00"	302.82'	51.79'	25.96'	51.73'	S10°12'14"E
C67	110°43'43"	50.00'	96.63'	72.38'	82.28'	N52°23'12"W
C68	71°37'58"	50.00'	62.51'	36.08'	58.52'	N71°56'04"W
C69	30°48'51"	252.82'	135.97'	69.67'	134.33'	N20°42'40"W



NOTE: FOR THOSE LOTS ADJOINING PONDS OR LAKES, THE CORRESPONDING PROPERTY LINE BETWEEN THE LAKE OR POND AND THE LOT SHALL BE THE LINE OF NORMAL POOL OF THE ADJACENT POND OR LAKE. THE AREA OF EACH LOT IS CALCULATED TO THE LINE OF NORMAL POOL. THE DOTTED LINE REPRESENTS A TRAVERSE LINE (FOR CLOSURE) AND DOES NOT REPRESENT A PROPERTY LINE.

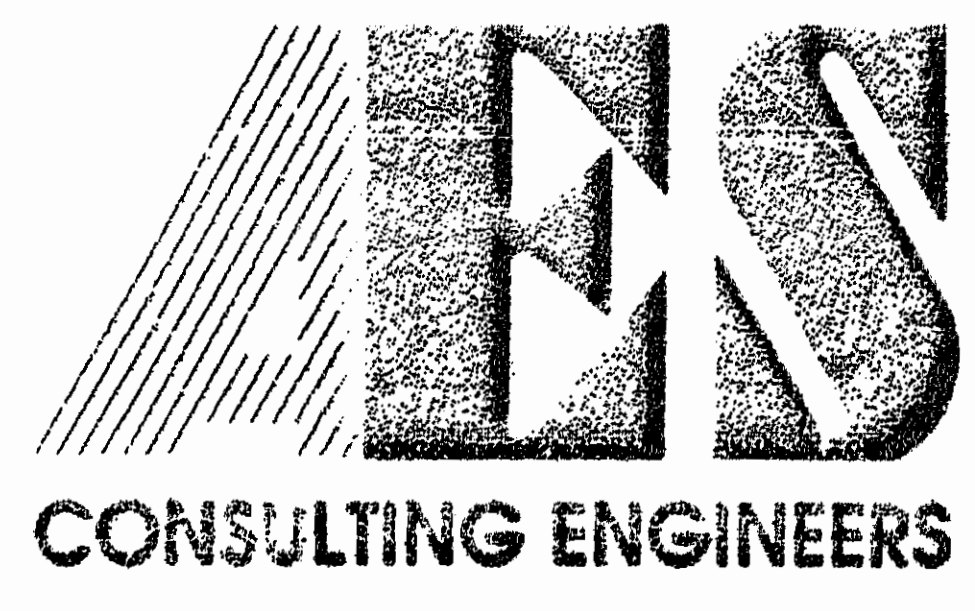
RIGHT-OF-WAY CURVE DATA TABLE

No.	DELTA	RADIUS	LENGTH	TANGENT	CHORD	CHORD BEARING
C32	10°35'12"	510.00'	94.23'	47.25'	94.10'	S22°35'34"E
C33	82°29'10"	25.00'	35.99'	21.92'	32.96'	S13°21'25"W
C94	52°51'46"	302.82'	279.39'	150.53'	269.58'	S31°44'07"E
C95	130°24'56"	50.00'	113.81'	108.25'	90.78'	N07°02'29"E
C102	69°18'56"	25.00'	30.24'	17.28'	28.43'	S74°38'09"E
C103	37°47'04"	520.00'	342.92'	177.96'	336.74'	S58°52'14"E
C104	18°03'31"	440.00'	138.68'	69.92'	138.11'	S68°44'00"E
C105	82°16'26"	25.00'	35.90'	21.84'	32.89'	N18°34'01"W
C106	39°52'09"	305.00'	212.23'	110.62'	207.98'	N02°38'07"E
C114	48°39'39"	614.31'	521.73'	277.76'	506.19'	N68°10'58"W
C115	28°01'45"	560.00'	273.95'	139.78'	271.23'	S73°28'20"W
C134	02°44'08"	563.33'	26.90'	13.45'	26.89'	S53°26'56"W

NOTE REGARDING BUILDING SETBACKS
UNLESS OTHERWISE NOTED, BUILDING SETBACKS FOR THE LOTS SHOWN ARE AS FOLLOWS:
FRONT: 60'
SIDE: 10'
REAR: 40'

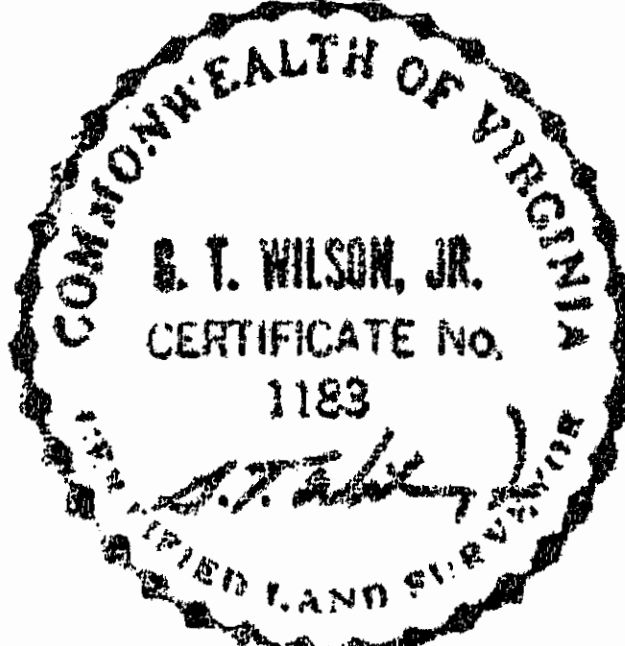
☒ DENOTES V.D.O.T. MAINTAINED DRAINAGE EASEMENTS

HEARTHSTONE



5248 Olde Towne Road, Suite 1
Williamsburg, Virginia 23188
(804) 253-0040
Fax (804) 220-8994

PLAT OF
HEARTHSTONE
THE
GOVERNOR'S LAND
At Two Rivers
JAMES CITY COUNTY
VIRGINIA



No.	DATE	REVISION / COMMENT / NOTE	BY

Designed VMB	Drawn
Scale 1"=100'	Date 4/23/93
Project No. 7173	
Drawing No. 3 of 5	