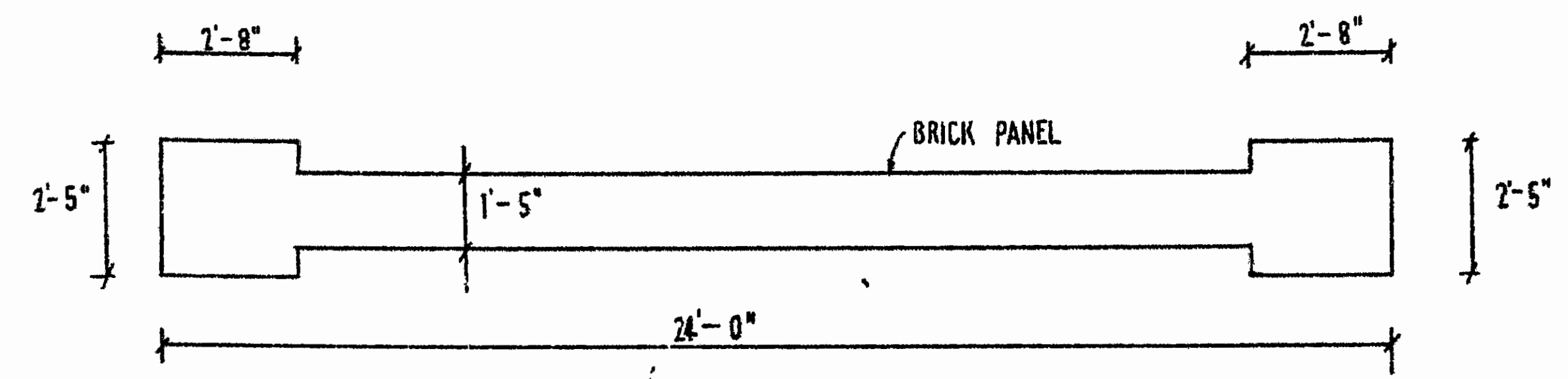
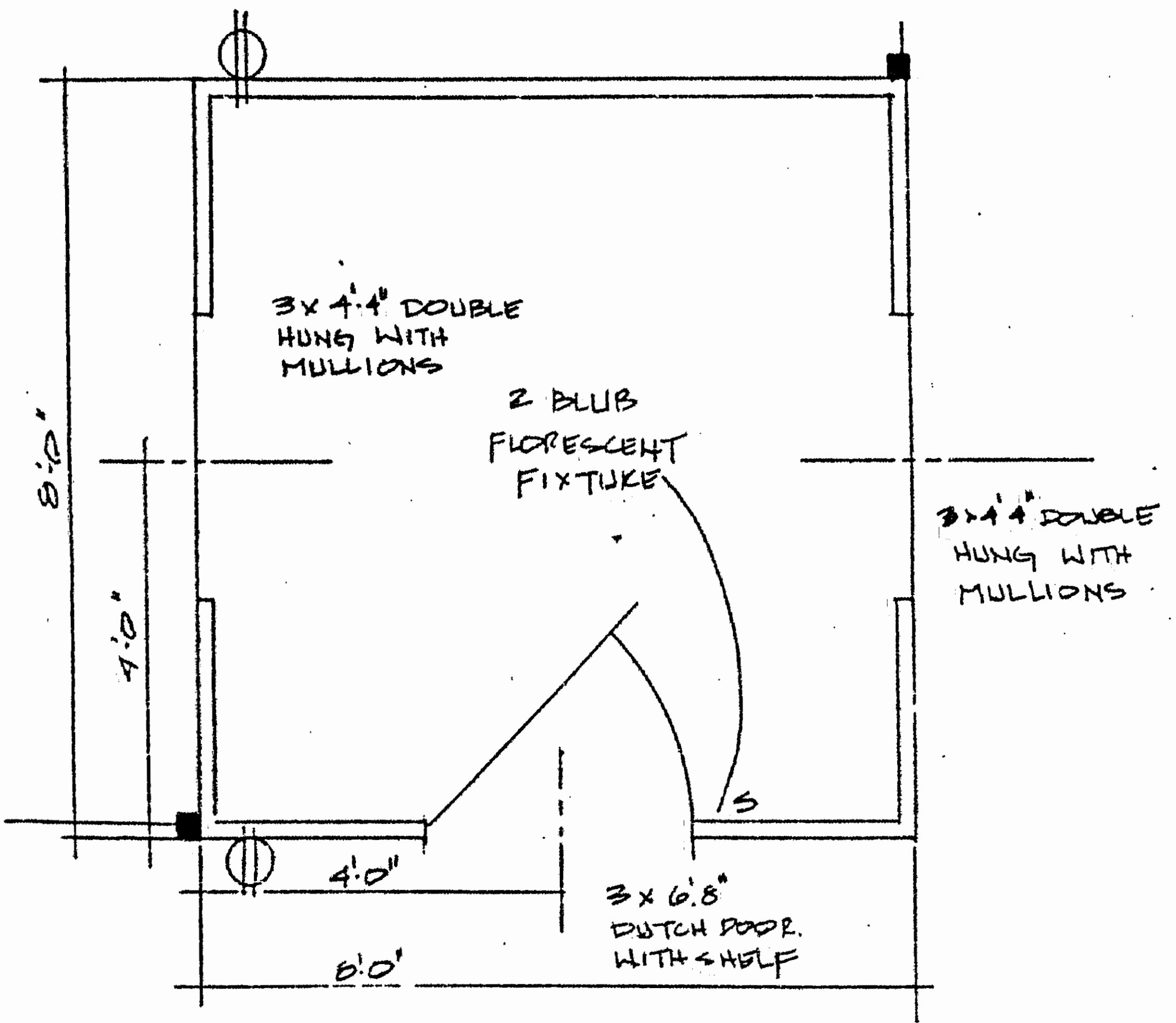


FOUNTAIN
COMMON ELEMENT



ENTRANCE WALL
COMMON ELEMENT
(TWO PROVIDED)



OUT BUILDING PLAN
COMMON ELEMENT
TWO PROVIDED

NOTE: LOCATIONS AND DIMENSIONS OF PAVILIONS, GAZEBOES, AND OTHER SIMILAR RECREATIONAL AND LANDSCAPE AMENITIES ARE APPROXIMATE ONLY. THE DECLARANT RESERVES THE RIGHT TO MODIFY SAME FOR PURPOSES OF ENGINEERING AND AESTHETIC CONSIDERATIONS.

ARCHITECT'S CERTIFICATE

I HERBY CERTIFY THAT THIS IS CORRECT AND ACCURATE PLAN, THAT THIS PLAN IS IN COMPLIANCE WITH VIRGINIA CODE ANN. SUBSECTIONS 55-79.58 (b) AND (e), AND THAT THE UNITS DEPICTED HEREON HAVE BEEN SUBSTANTIALLY COMPLETED.

Peter H. Hand
PETER H. HAND, A.I.A. DATE

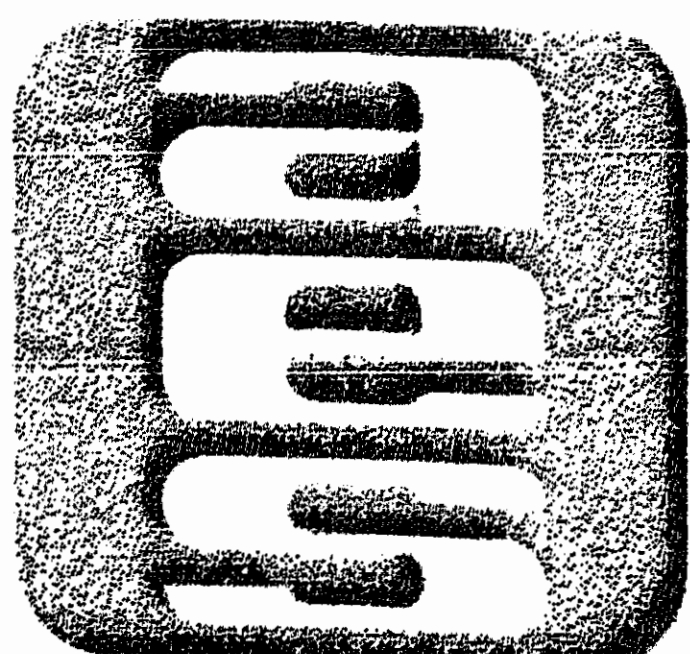


EXHIBIT A-3
AES, a professional corporation
5248 Olde Towne Road, Suite 1
Williamsburg, Va. 23185
804-253-0040
Engineering, Planning, Surveying

PLAT OF CONDOMINIUM
THE MANOR CLUB
AT FORD'S COLONY
PHASE ONE
DECLARANT: REALTEC INCORPORATED

POWhatan District JAMES CITY COUNTY VIRGINIA

12:16 p.m.

Recorded	17th day of May 1993		
P. B. No.	618, pages 744		
	<i>Richard</i> Clerk		
2	4/20/93	REVISED UNIT NUMBERS	STL
1	3/5/93	REVISED TITLE	GTW
NO.	DATE	REVISION / COMMENT / NOTE	BY

Designed	Drawn
Scale	Date
NONE	MAR. 1993
Project No.	7739
Drawing No.	9 of 9

