

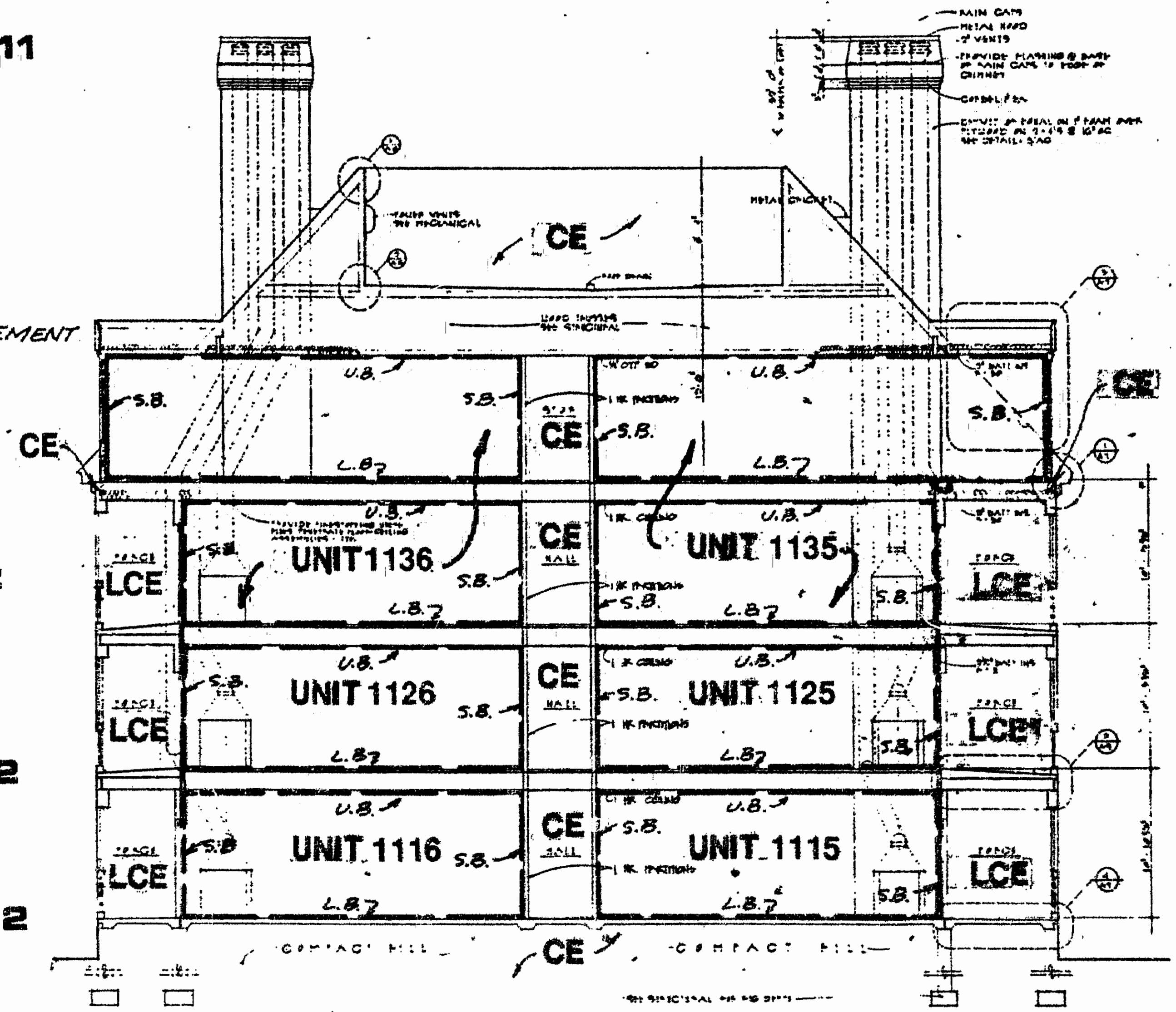
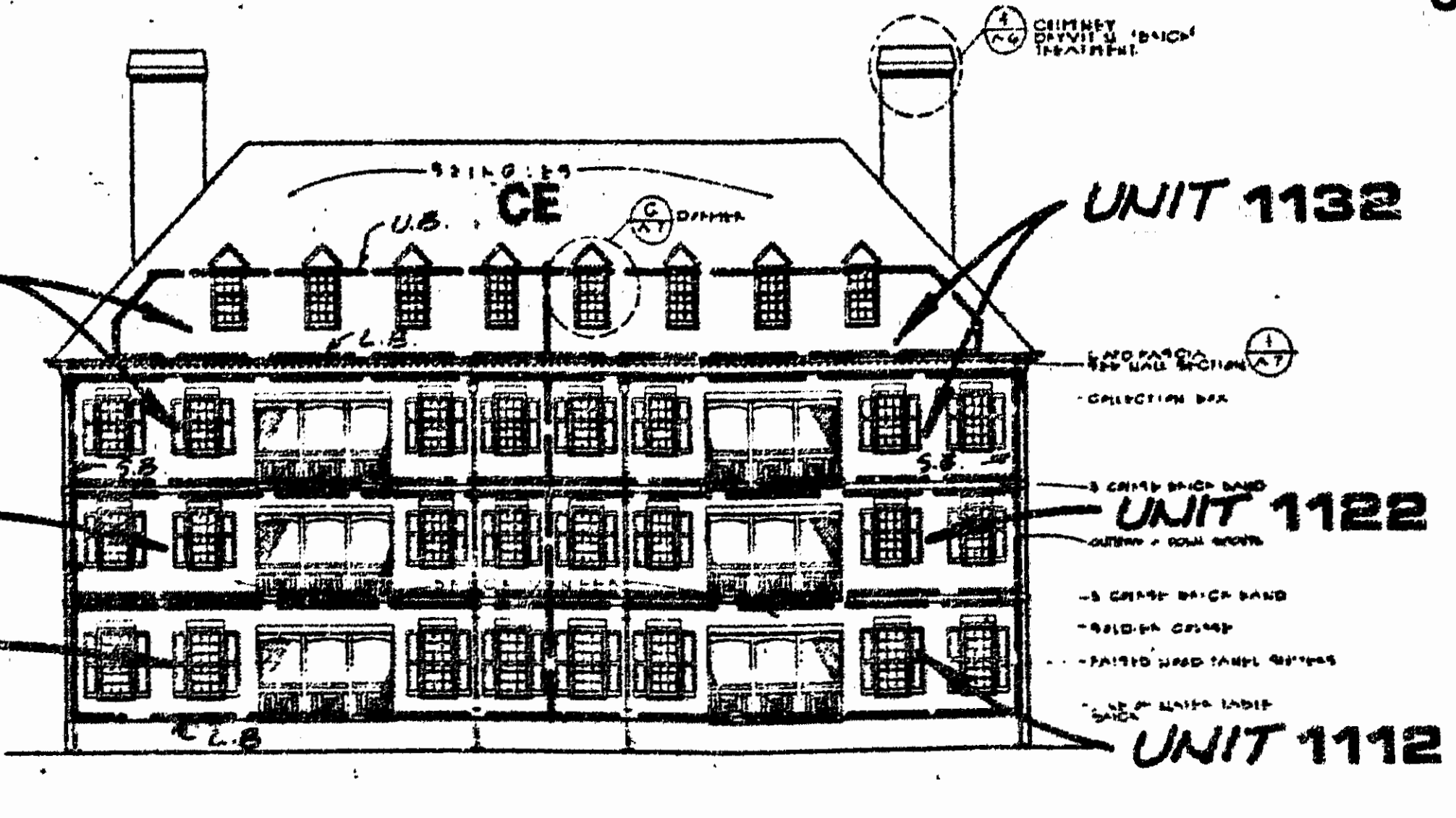
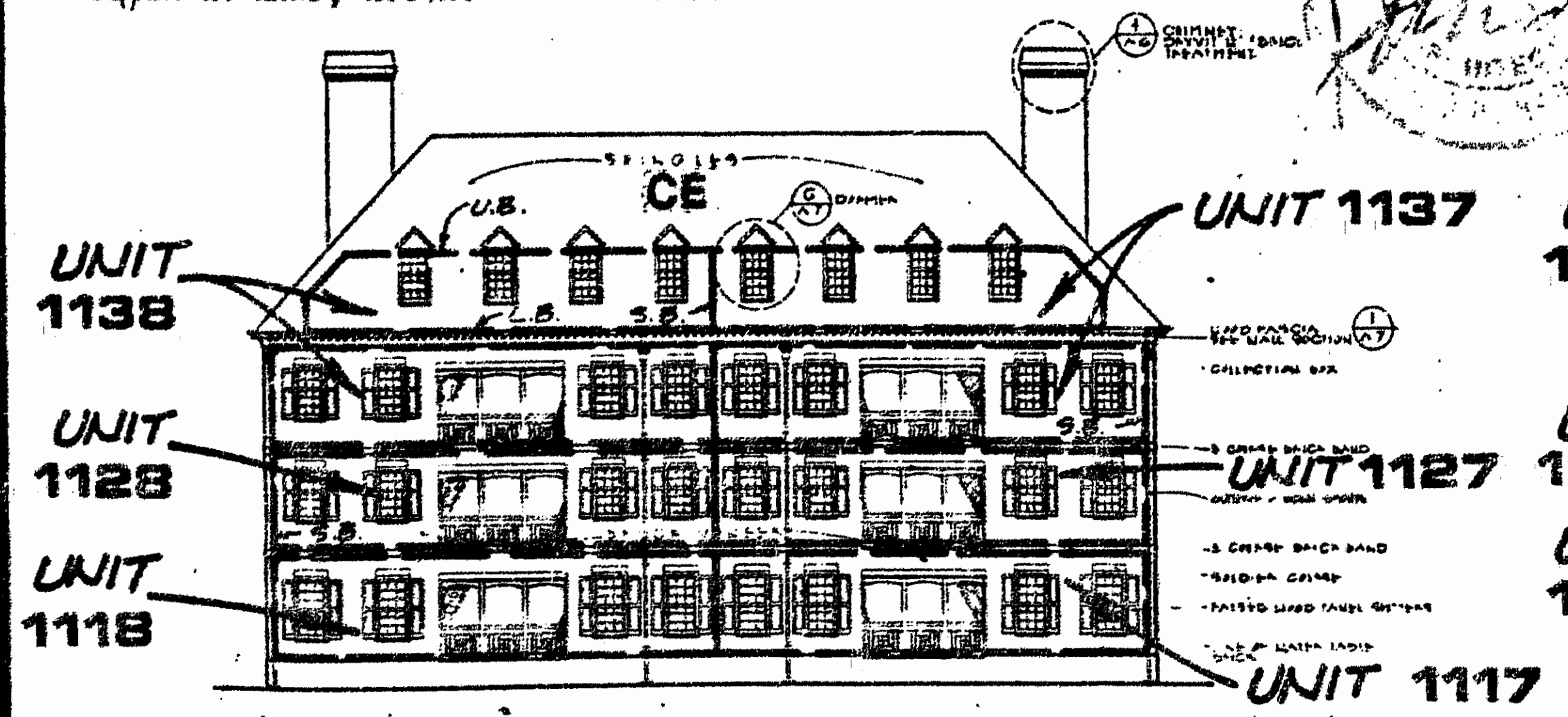
BUILDING SECTION A - A

ARCHITECT'S CERTIFICATE

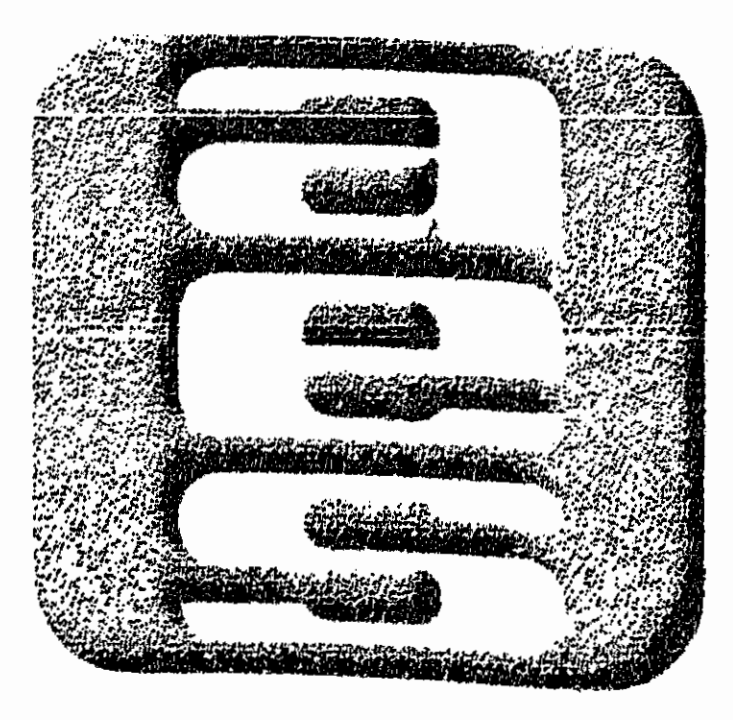
I HERBY CERTIFY THAT THIS IS CORRECT AND ACCURATE PLAN, THAT THIS PLAN IS IN COMPLIANCE WITH VIRGINIA CODE ANN. SUBSECTIONS 55-79.58 (b) AND (e), AND THAT THE UNITS DEPICTED HEREON HAVE BEEN SUBSTANTIALLY COMPLETED.

Prater H. Hand
 PRATER H. HAND, A.T.A. DATE 7/11/93

LEGEND
 L.B. - LOWER BOUNDARY
 S.B. - SIDE BOUNDARY
 U.B. - UPPER BOUNDARY
 CE - COMMON ELEMENT
 LCE - LIMITED COMMON ELEMENT



BUILDING SECTION B - B



AES, a professional corporation
 5248 Olde Towne Road, Suite 1
 Williamsburg, Va. 23185
 804-253-0040
 Engineering, Planning, Surveying

**PLAT OF CONDOMINIUM
 THE MANOR CLUB
 AT FORD'S COLONY
 PHASE ONE**
 DECLARANT: REALTEC INCORPORATED
 POWHATAN DISTRICT JAMES CITY COUNTY VIRGINIA

DESIGNED	12/16/91		
DRAWN	1/17/92		
SCALE	AS SHOWN		
DATE	MAY 1993		
PROJECT NO.	7739		
DRAWING NO.	7 of 9		
NO.	DATE	REVISION / COMMENT / NOTE	BY
2	4/20/93	REVISED UNIT NUMBERS	GTI
1	3/5/93	REVISED TITLE	GTI

