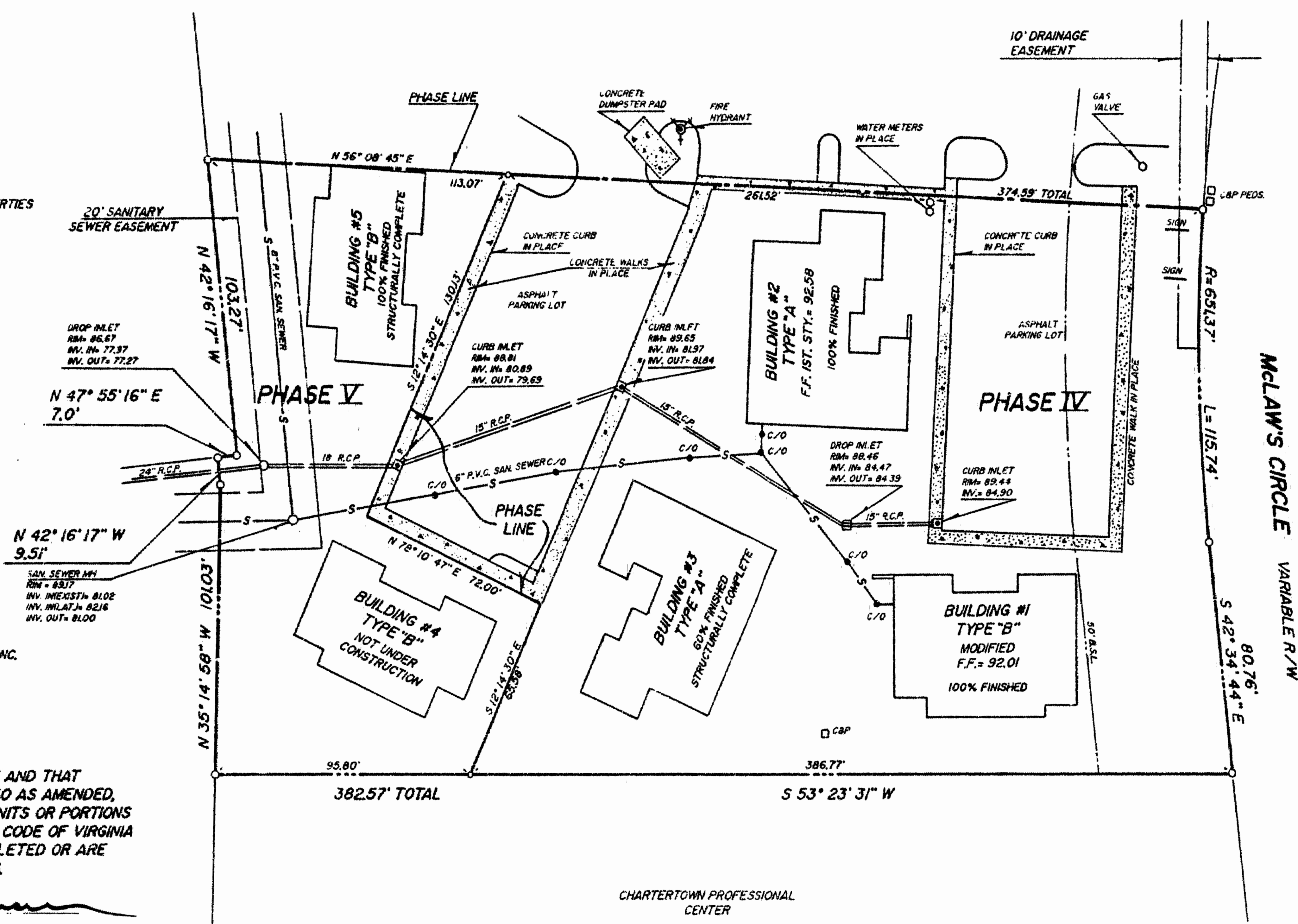


VICINITY MAP SCALE: 1" = 2,000'

"QUARTERLAND COMMONS" PHASE II



BUILDING TYPES
 BUILDING #1 IS A 1 STORY BRICK & FRAME
 BUILDING #2 IS A 2 STORY BRICK & FRAME
 "FINISHED" IS DEFINED AS SPACE READY FOR OCCUPANCY

I HEREBY CERTIFY THAT THIS PLAT IS ACCURATE AND THAT IT COMPLIES WITH THE CODE OF VIRGINIA OF 1950 AS AMENDED, 55-79, 58, AND I FURTHER CERTIFY THAT ALL UNITS OR PORTIONS THEREOF DEPICTED HEREON, PURSUANT TO THE CODE OF VIRGINIA 55-79, 58 (a), HAVE BEEN SUBSTANTIALLY COMPLETED OR ARE PRESENTLY IN STATUS SHOWN ON EACH BUILDING.

SIGNED: *Roger D. Spearman*

CHARTERTOWN PROFESSIONAL CENTER



SPEARMAN & ASSOCIATES, P. C.
 SURVEYING AND PLANNING
 489 McLaws Circle — WILLIAMSBURG, VIRGINIA
 (804) 253-8720



EXHIBIT B
"QUARTERLAND COMMONS" - II
 PHASES IV & V

OFFICE CONDOMINIUMS
 LOCATED
 BUSCH CORPORATE CENTER
 JAMES CITY COUNTY, VIRGINIA
 SCALE: 1" = 40' DATE: APRIL 10, 1993
 PREPARED FOR
JIM GRIFFITH BUILDER
 C.O. # 6280 F.B. #

1817 mm
 Recorded 23 day of April 1993
 in
 D. B. No. 614 pages 661
John W. [Signature] Clerk

