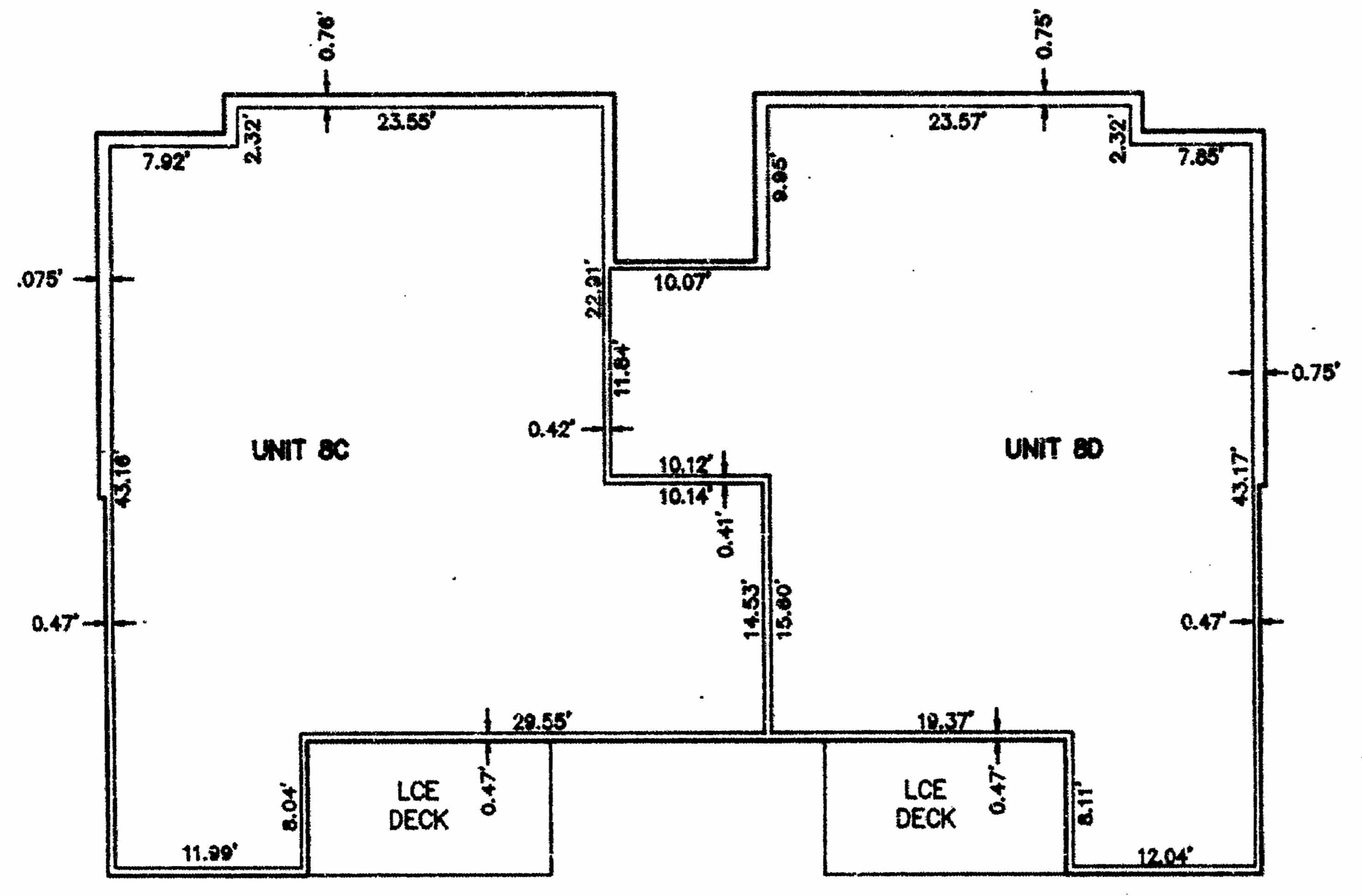
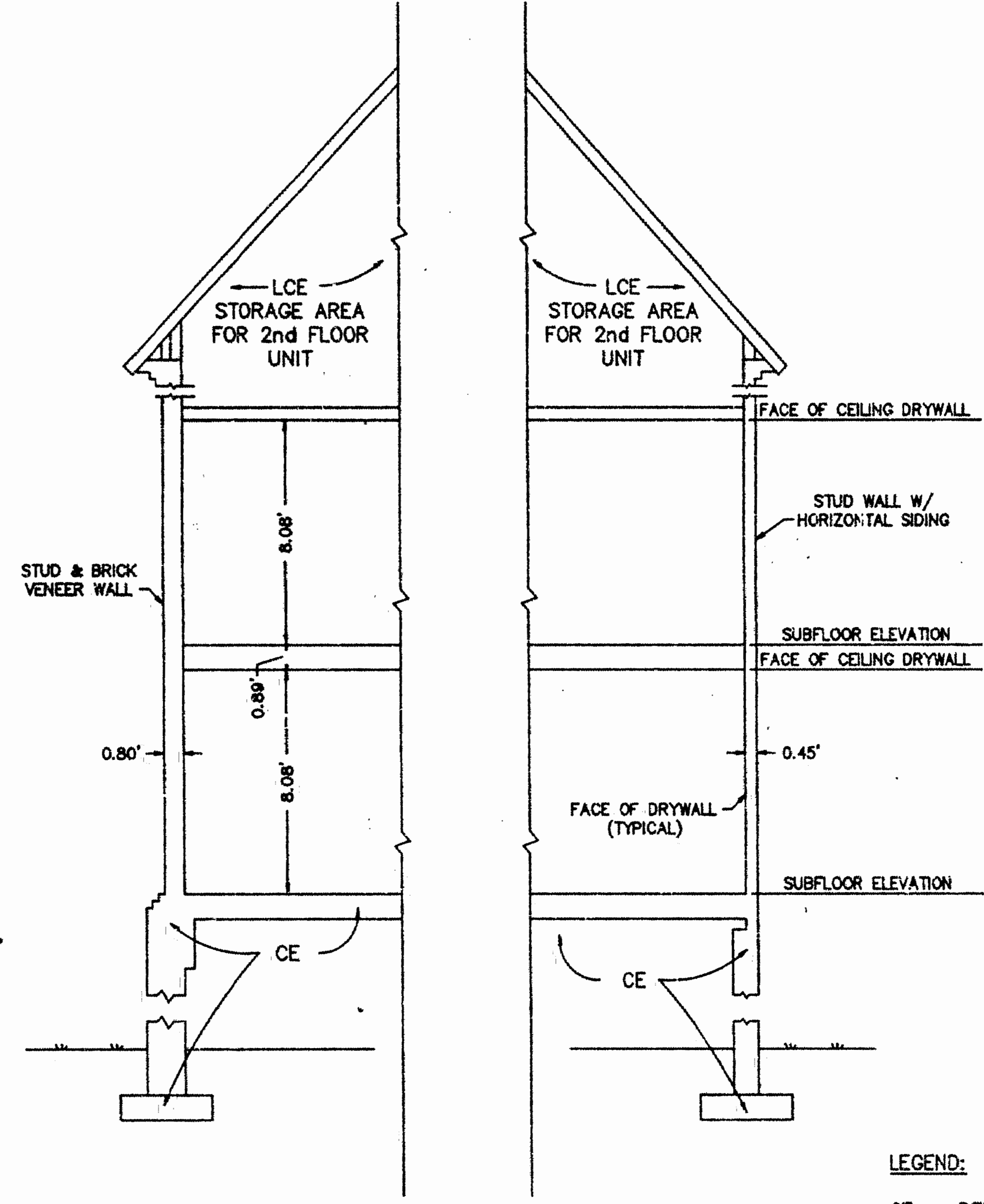


EXHIBIT C-5
 CONDOMINIUM PLANS
 THE WOODLANDS A CONDOMINIUM
 PHASE V, BUILDING NO. 8
 OWNER/DEVELOPER: S.W.N. ASSOCIATES
 THE CITY OF WILLIAMSBURG, VIRGINIA
 SCALE: 1" = 10' MARCH 5, 1993
 0 5 10 20 30 40 FEET
 GRAPHIC SCALE

THE SIRINE GROUP, LTD.
 SURVEYORS • ENGINEERS • PLANNERS
 P.O. BOX 450, ROUTE 17
 WHITE MARSH, VIRGINIA 23183



SECOND FLOOR
 SCALE: 1" = 10'

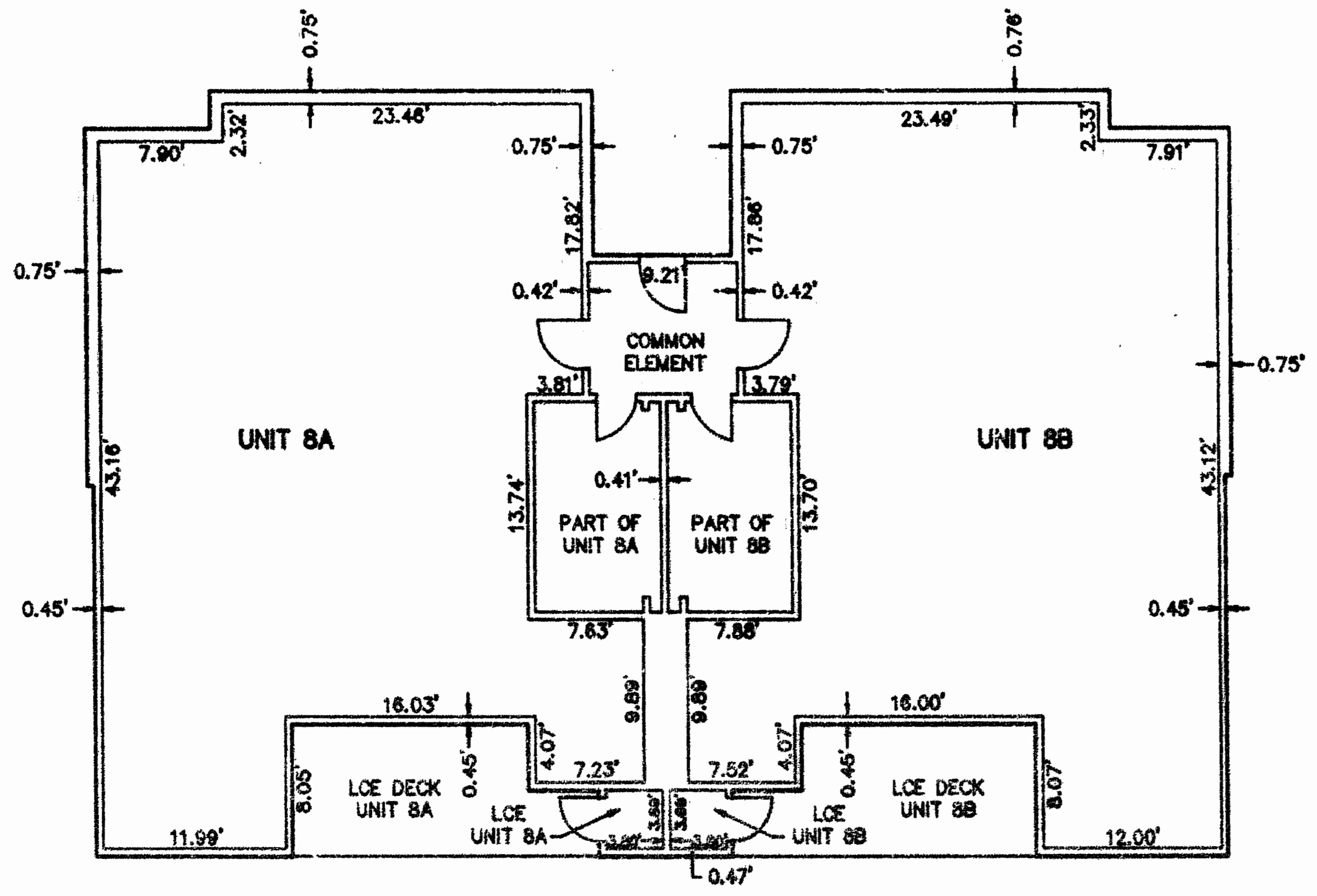


SECTION
 SCALE: 1" = 4'

LEGEND:
 CE DENOTES "COMMON ELEMENT"
 LCE DENOTES "LIMITED COMMON ELEMENT"

I HEREBY CERTIFY THAT I HAVE SURVEYED THE UNITS AND DO FURTHER CERTIFY THAT THE PLANS ARE ACCURATE AND THE PLANS COMPLY WITH THE PROVISIONS OF SECTION 55-79.58 (b) OF THE CODE OF VIRGINIA AS AMENDED. ALL UNITS HAVE BEEN SUBSTANTIALLY COMPLETED.

SIGNED: *Kenton B. Patrick* DATE: 3/5/93
 KENTON B. PATRICK, P.E.



FIRST FLOOR
 SCALE: 1" = 10'

3:37 p.m.
 Recorded 15th day of March 1993
 in
 B. No. 102, pages 551
Delina S. Ward Clerk

