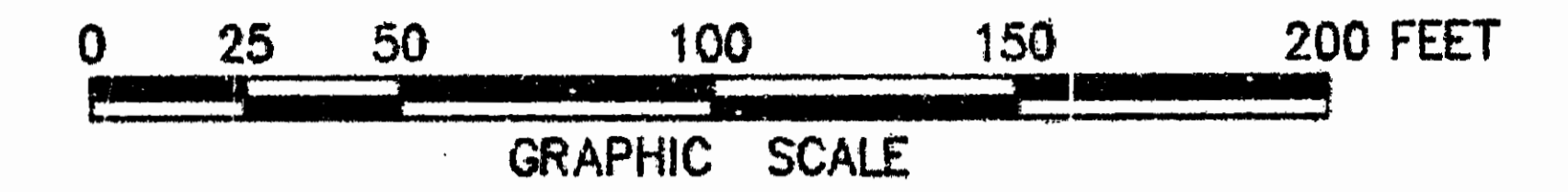
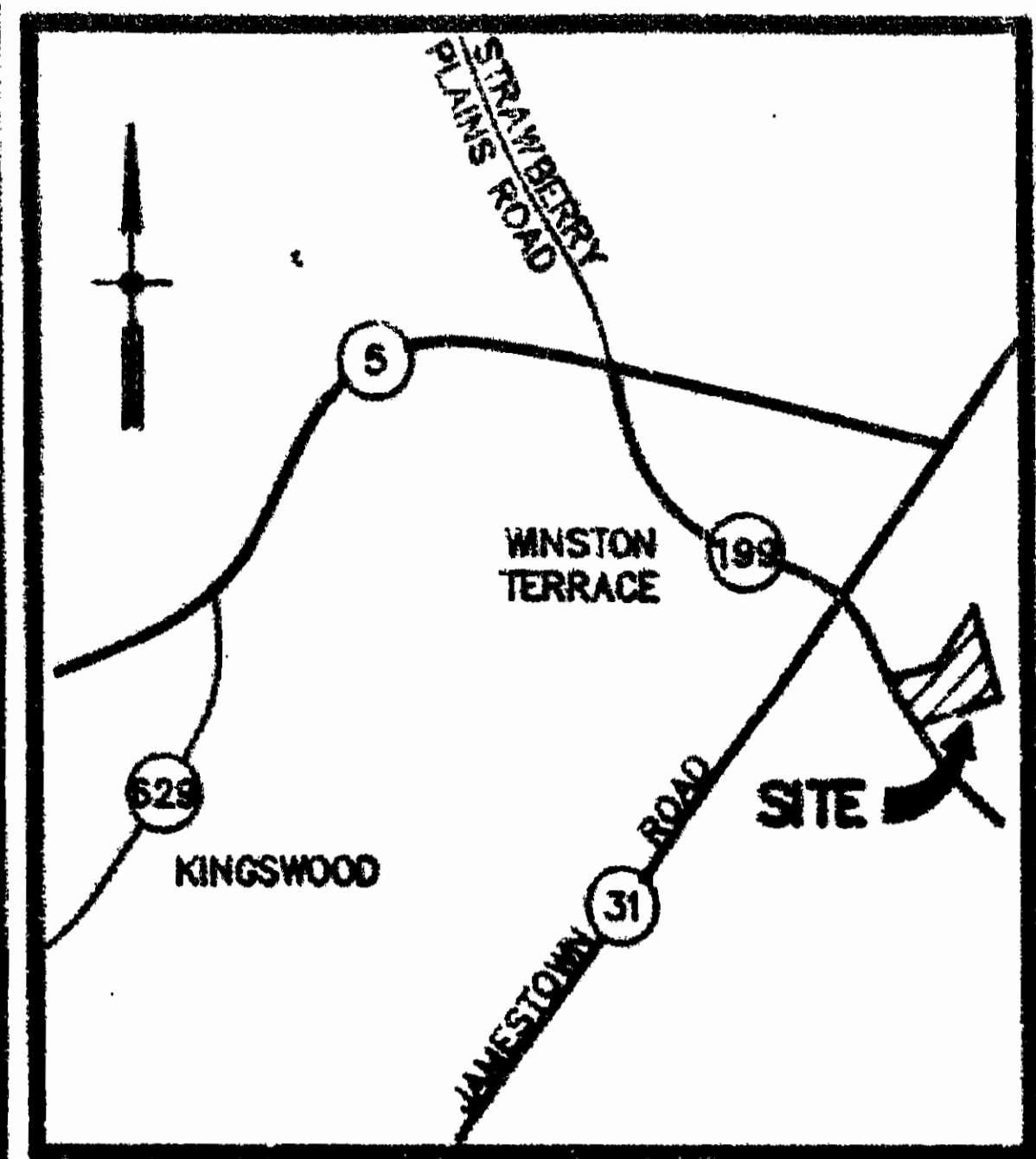


EXHIBIT B
CONDOMINIUM PLAT
THE WOODLANDS A CONDOMINIUM
PHASE V, BUILDING NO. 8
OWNER/DEVELOPER: S.W.N. ASSOCIATES

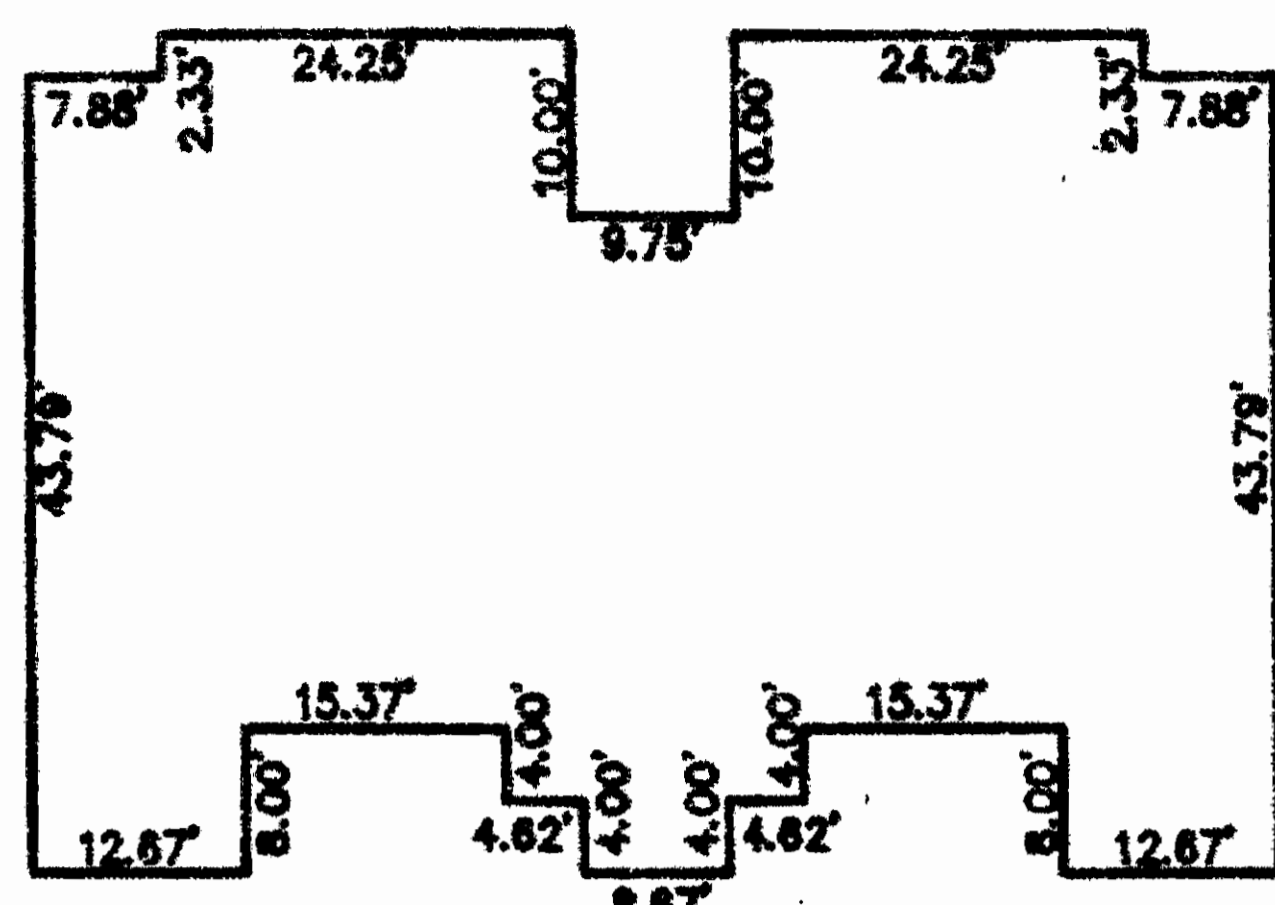
THE CITY OF WILLIAMSBURG, VIRGINIA
SCALE: 1" = 50' MARCH 5, 1993



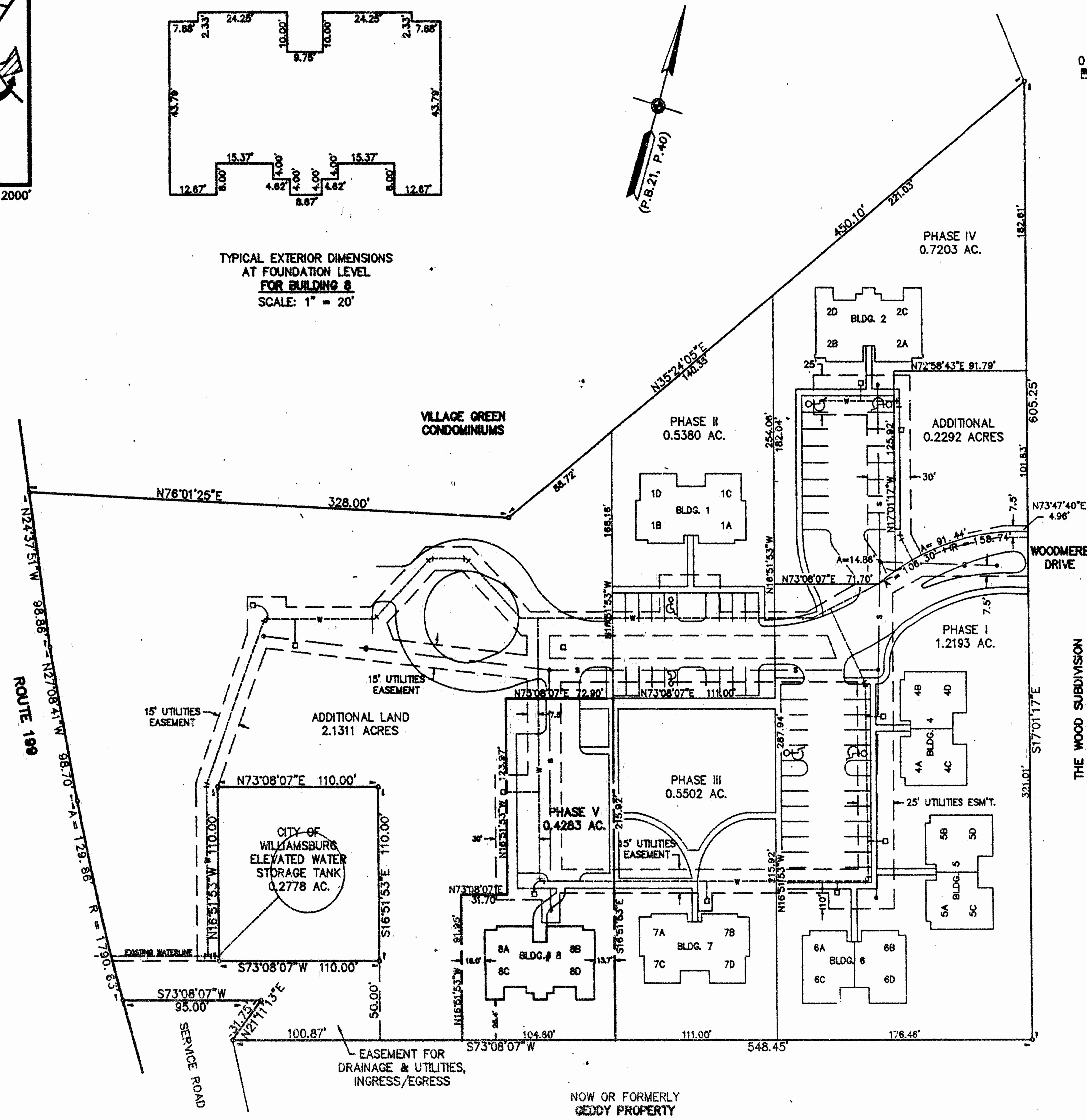
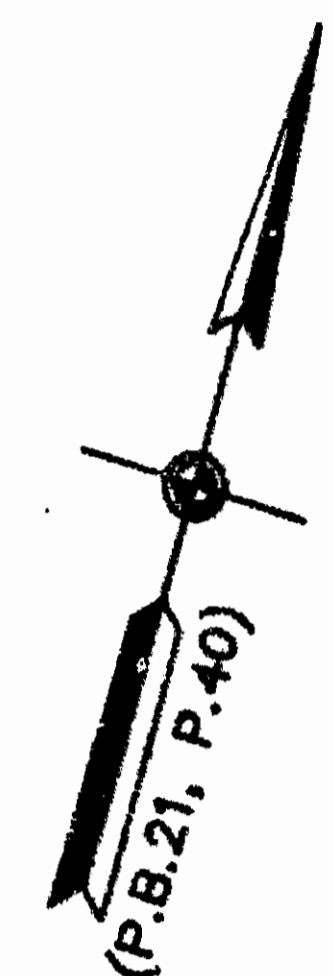
THE SIRINE GROUP, LTD.
SURVEYORS • ENGINEERS • PLANNERS
P.O. BOX 450, ROUTE 17
WHITE MARSH, VIRGINIA 23183



VICINITY MAP SCALE: 1" = 2000'



TYPICAL EXTERIOR DIMENSIONS
AT FOUNDATION LEVEL
FOR BUILDING 8
SCALE: 1" = 20'



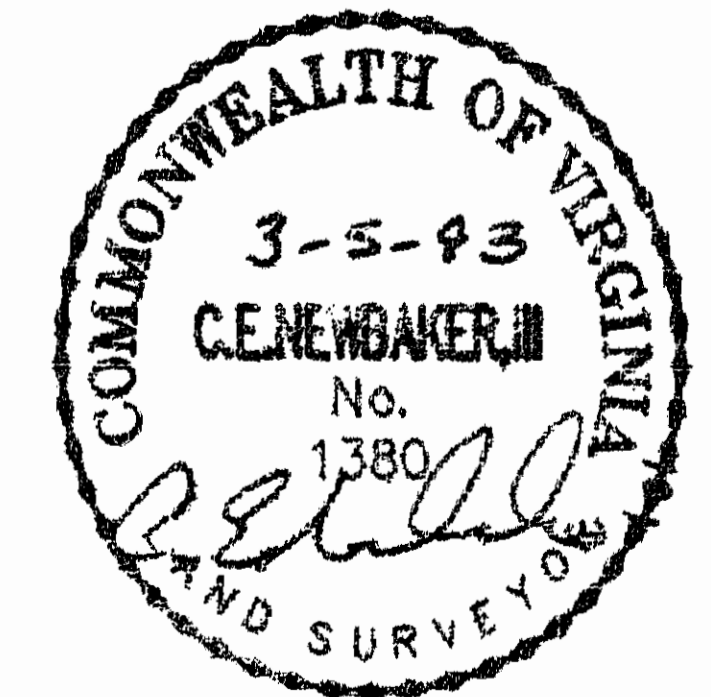
THE WOOD SUBDIVISION

DENOTES PHASE BOUNDARY:

NOTE:
ALL UTILITY EASEMENTS SHOWN HEREON ARE HEREBY DEDICATED TO THE CITY OF WILLIAMSBURG. (SEE "PLAT OF DRAINAGE & UTILITIES EASEMENTS", DATED AUGUST 1987), D.B. 81, P. 423.

I HEREBY CERTIFY THAT I HAVE SURVEYED THE SUBMITTED LAND AND DO FURTHER CERTIFY THAT THIS PLAT SHOWING LOCATIONS AND DIMENSIONS OF THE SUBMITTED LAND IS ACCURATE AND THE PLAT COMPLIES WITH THE PROVISIONS OF SECTION 55-79.58 (a) OF THE CODE OF VIRGINIA AS AMENDED. ALL UNITS HAVE BEEN SUBSTANTIALLY COMPLETED.

SIGNED: DATE: 3-5-93
C.E. NEWBAKER, III
L.S. # 1380



3:37 p.m.
Recorded 15th day of March, 1993
P.B. No. 102; pages 551
 Clerk

PLAT RECORDED IN
F.B. NO. 57 PAGE 6-7

