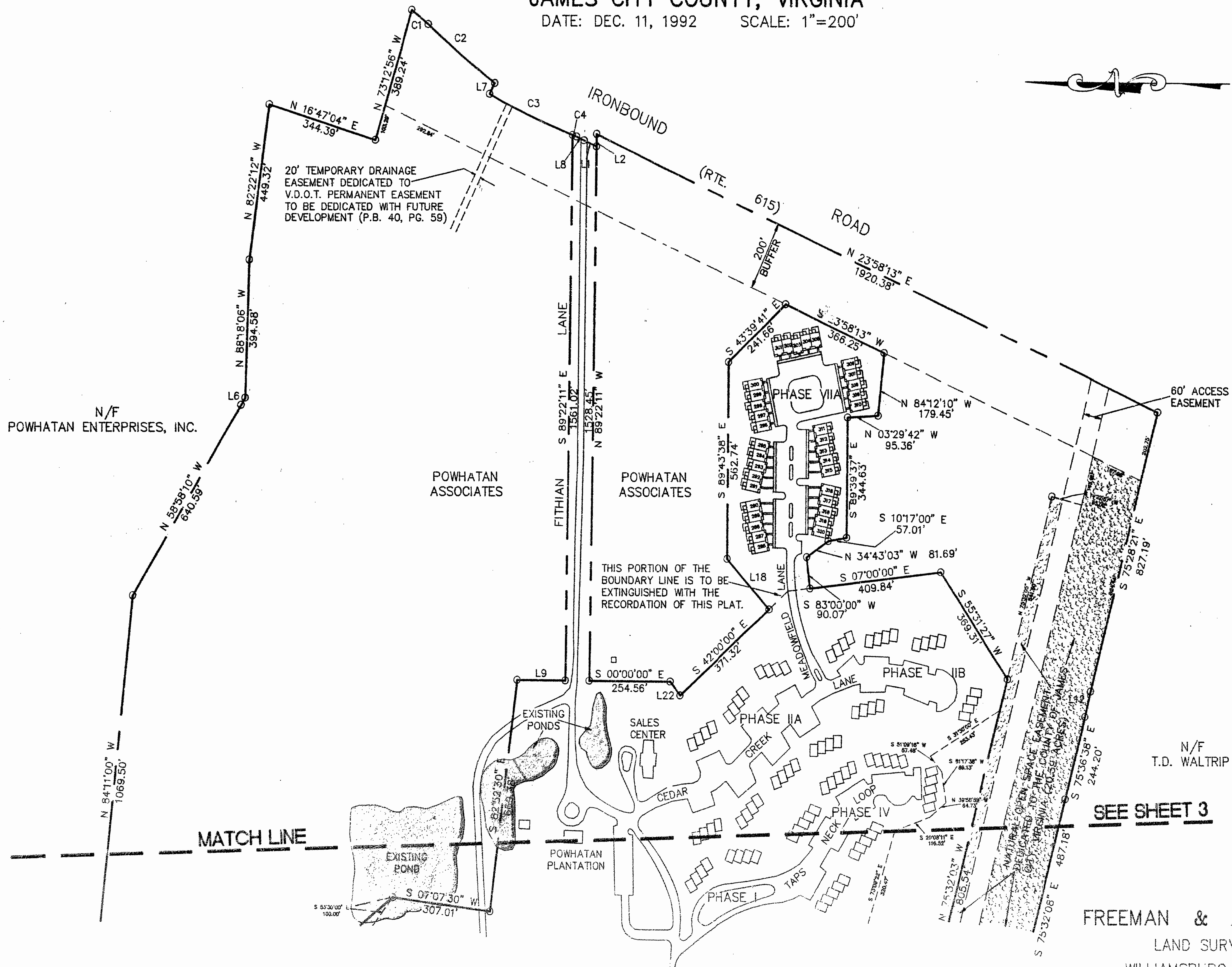


POWHATAN PLANTATION PHASE VIIA

JAMES CITY COUNTY, VIRGINIA

DATE: DEC. 11, 1992 SCALE: 1"=200'



N/F
POWHATAN ENTERPRISES, INC.

POWHATAN ASSOCIATES

POWHATAN ASSOCIATES

60' ACCESS EASEMENT

N/F
T.D. WALTRIP

MATCH LINE

SEE SHEET 3

FREEMAN & ASSOCIATES
LAND SURVEYORS
WILLIAMSBURG, VIRGINIA

PHASE I THRU VIIA
99.80 TOTAL ACRES

SHEET 2 OF 3

