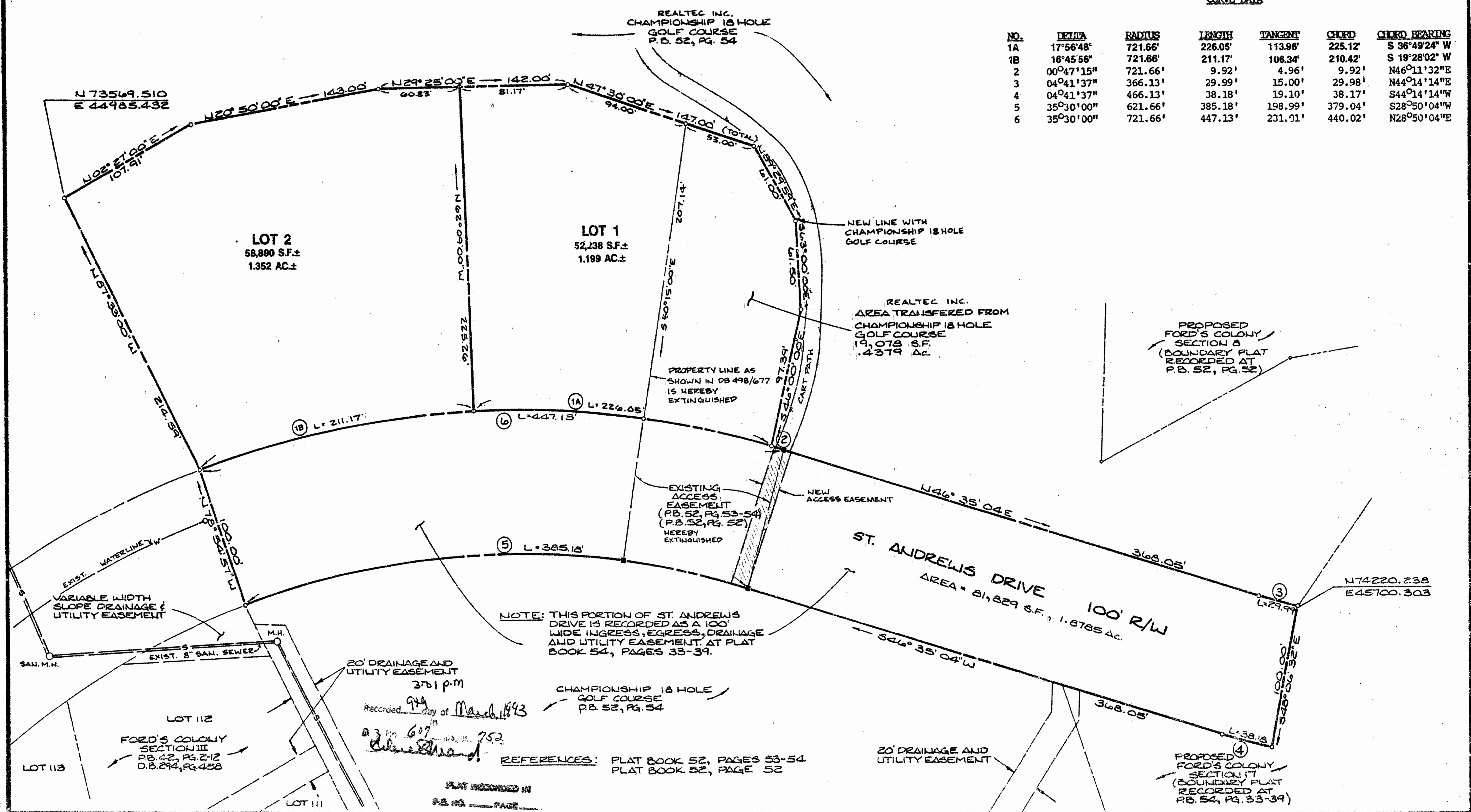


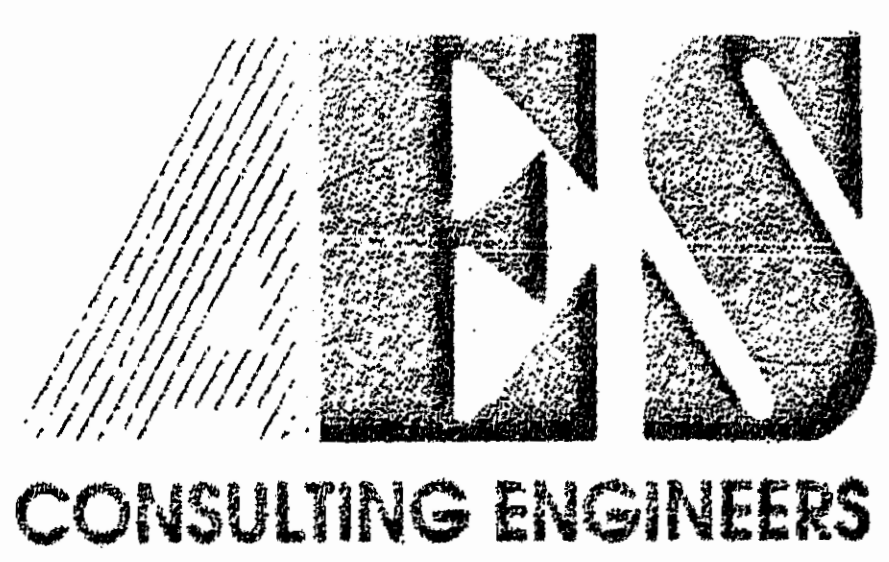
CURVE DATA

NO.	DELTA	RADIUS	LENGTH	TANGENT	CHORD	CHORD BEARING
1A	17°56'48"	721.66'	226.05'	113.98'	225.12'	S 36°49'24" W
1B	16°45'56"	721.66'	211.17'	106.34'	210.42'	S 19°28'02" W
2	00°47'15"	721.66'	9.92'	4.96'	9.92'	N46°11'32"E
3	04°41'37"	366.13'	29.99'	15.00'	29.98'	N44°14'14"E
4	04°41'37"	466.13'	38.18'	19.10'	38.17'	S44°14'14"W
5	35°30'00"	621.66'	385.18'	198.99'	379.04'	S28°50'04"W
6	35°30'00"	721.66'	447.13'	231.91'	440.02'	N28°50'04"E



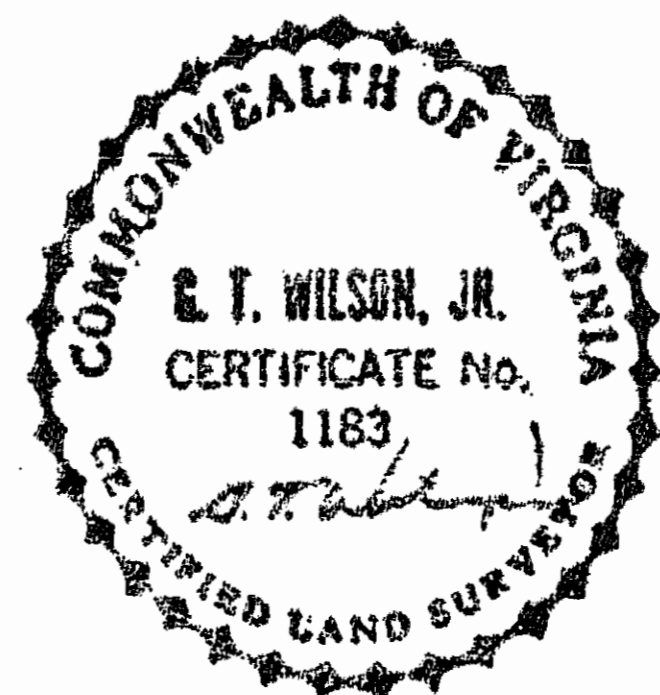
NOTE: THIS PORTION OF ST. ANDREW'S DRIVE IS RECORDED AS A 100' WIDE INGRESS, EGRESS, DRAINAGE AND UTILITY EASEMENT AT PLAT BOOK 54, PAGES 33-39.

REFERENCES: PLAT BOOK 52, PAGES 53-54
PLAT BOOK 52, PAGE 52



5248 Olde Towne Road, Suite 1
Williamsburg, Virginia 23188
(804) 253-0040
Fax (804) 220-8994

PLAT OF SUBDIVISION
AND BOUNDARY LINE ADJUSTMENT
FORD'S COLONY
@ WILLIAMSBURG
SECTION III-A, LOTS 1 - 2
POWhatan DISTRICT JAMES CITY COUNTY VIRGINIA



NO.	DATE	REVISION / COMMENT / NOTE	BY

Designed GTW	Drawn AES
Scale 1" = 50'	Date FF 2, 1993
Project No. 5652	
Drawing No. 2 OF 2	