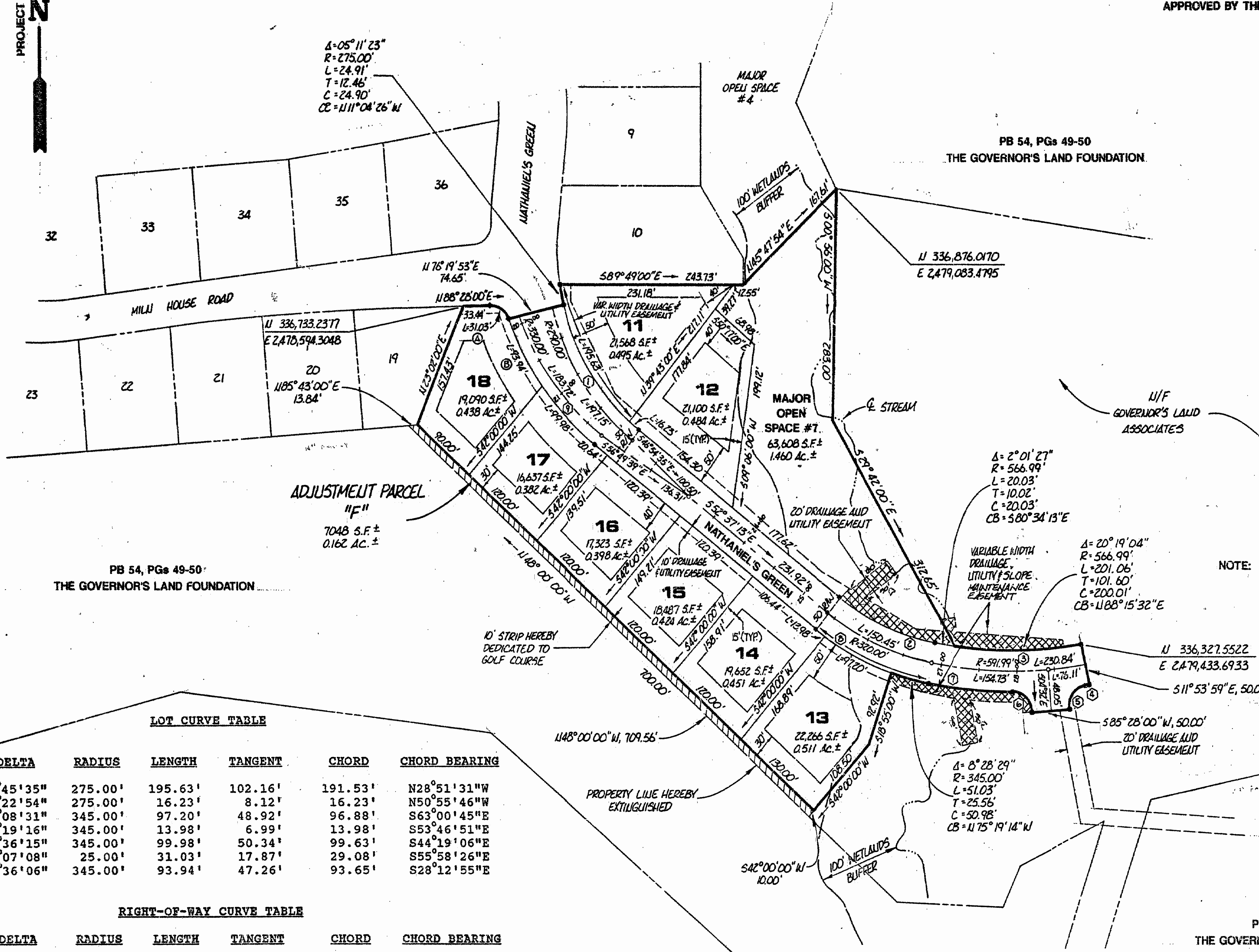
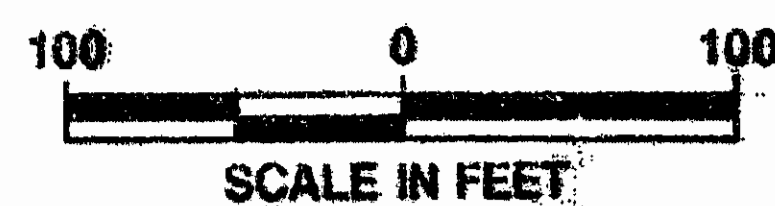


NOTE REGARDING BUILDING SETBACKS
UNLESS OTHERWISE NOTED, BUILDING SETBACKS FOR
THE LOTS SHOWN ARE AS FOLLOWS:
FRONT: 40' SIDE: 15'
REAR: 30'

RESTRICTIONS IN AREAS OF MAJOR OPEN SPACE
THOSE AREAS SHOWN AND DENOTED AS
'MAJOR OPEN SPACE' SHALL BE UNDISTURBED
AND EXCLUSIVE OF ANY LOTS, EXCEPT
FOR GOLF FAIRWAYS, UTILITIES, DRAINAGE
IMPROVEMENTS, ROADS AS SHOWN GENERALLY
ON THE MASTER PLAN FOR GOV. JONAS
LAND, JOGGING, NATURE, OR GOLF
TRAILS OR BRIDGES, AND SIGNAGE
APPROVED BY THE PLANNING COMMISSION.



PB 54, Pgs 49-50
THE GOVERNOR'S LAND FOUNDATION

NOTE: DENOTES VIRGINIA DEPARTMENT OF TRANSPORTATION EASEMENT

LOT CURVE TABLE

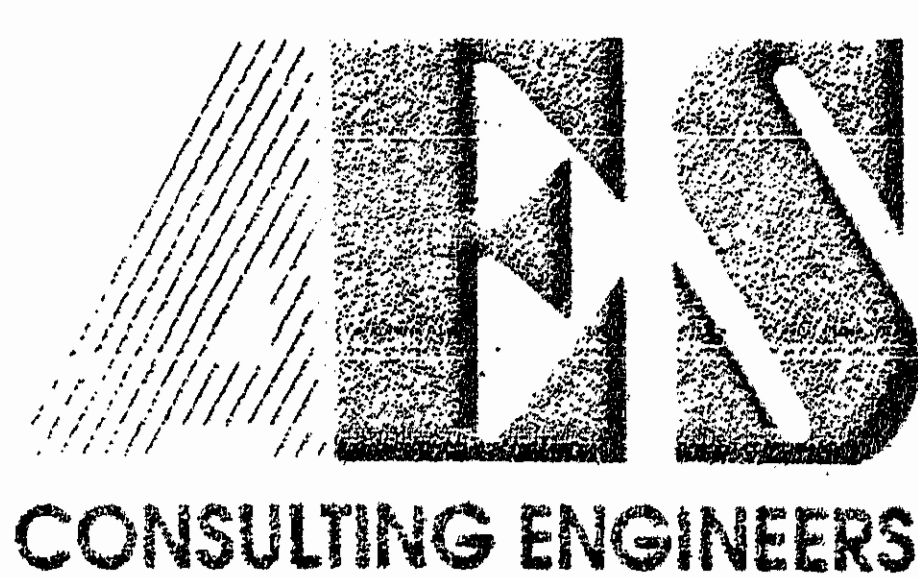
NO.	DELTA	RADIUS	LENGTH	TANGENT	CHORD	CHORD BEARING
11	40°45'35"	275.00'	195.63'	102.16'	191.53'	N28°51'31"W
12	03°22'54"	275.00'	16.23'	8.12'	16.23'	N50°55'46"W
13	16°08'31"	345.00'	97.20'	48.92'	96.88'	S63°00'45"E
14	02°19'16"	345.00'	13.98'	6.99'	13.98'	S53°46'51"E
17	16°36'15"	345.00'	99.98'	50.34'	99.63'	S44°19'06"E
18A	71°07'08"	25.00'	31.03'	17.87'	29.08'	S55°58'26"E
18B	15°36'06"	345.00'	93.94'	47.26'	93.65'	S28°12'55"E

RIGHT-OF-WAY CURVE TABLE

NO.	DELTA	RADIUS	LENGTH	TANGENT	CHORD	CHORD BEARING
1	38°57'06"	275.00'	186.95'	97.25'	183.38'	S33°08'40"E
2	26°56'16"	295.00'	138.70'	70.65'	137.42'	S66°05'21"E
3	22°20'31"	566.99'	221.09'	111.97'	219.69'	N89°16'15"E
4	02°53'59"	616.99'	31.23'	15.62'	31.22'	S79°32'59"W
5	85°31'59"	25.00'	37.32'	23.12'	33.95'	S38°14'00"W
6	85°31'59"	25.00'	37.32'	23.12'	33.95'	N47°17'59"W
7	10°30'30"	616.99'	113.16'	56.74'	113.00'	N84°48'44"W
8	26°56'16"	345.00'	162.20'	82.63'	160.71'	N66°05'21"W
9	32°12'21"	345.00'	193.92'	99.60'	191.38'	N36°31'02"W

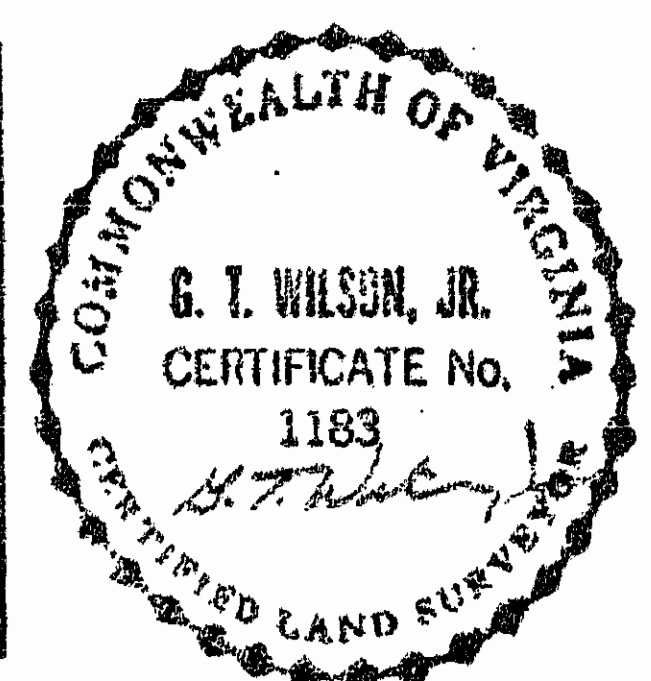
REFERENCE IS HEREBY EXPRESSLY MADE TO THE GENERAL NOTES AS THEY APPEAR ON SHEET #1 OF THIS PLAT, AND THE DECLARATION FOR THE GOVERNOR'S LAND AT TWO RIVERS FOR ADDITIONAL INFORMATION, RULES AND REGULATIONS REGARDING THIS SUBDIVISION.

11:59 AM
Recorded 309 of 1992
in
D. B. No. 593, pages 533
Clerk



5248 Olde Towne Road, Suite 1
Williamsburg, Virginia 23188
(804) 253-0040
Fax (804) 220-8994

PLAT OF
NATHANIEL'S GREEN, LOTS 11-18
THE
GOVERNOR'S LAND
At Two Rivers
POWhatan District JAMES CITY COUNTY VIRGINIA



NO.	DATE	REVISION	COMMENT	NOT	BY

Designed VMB	Drawn BJU
Scale 1"=100'	Date AUG. 1992
Project No. 7173	
Drawing No. 3 of 3	