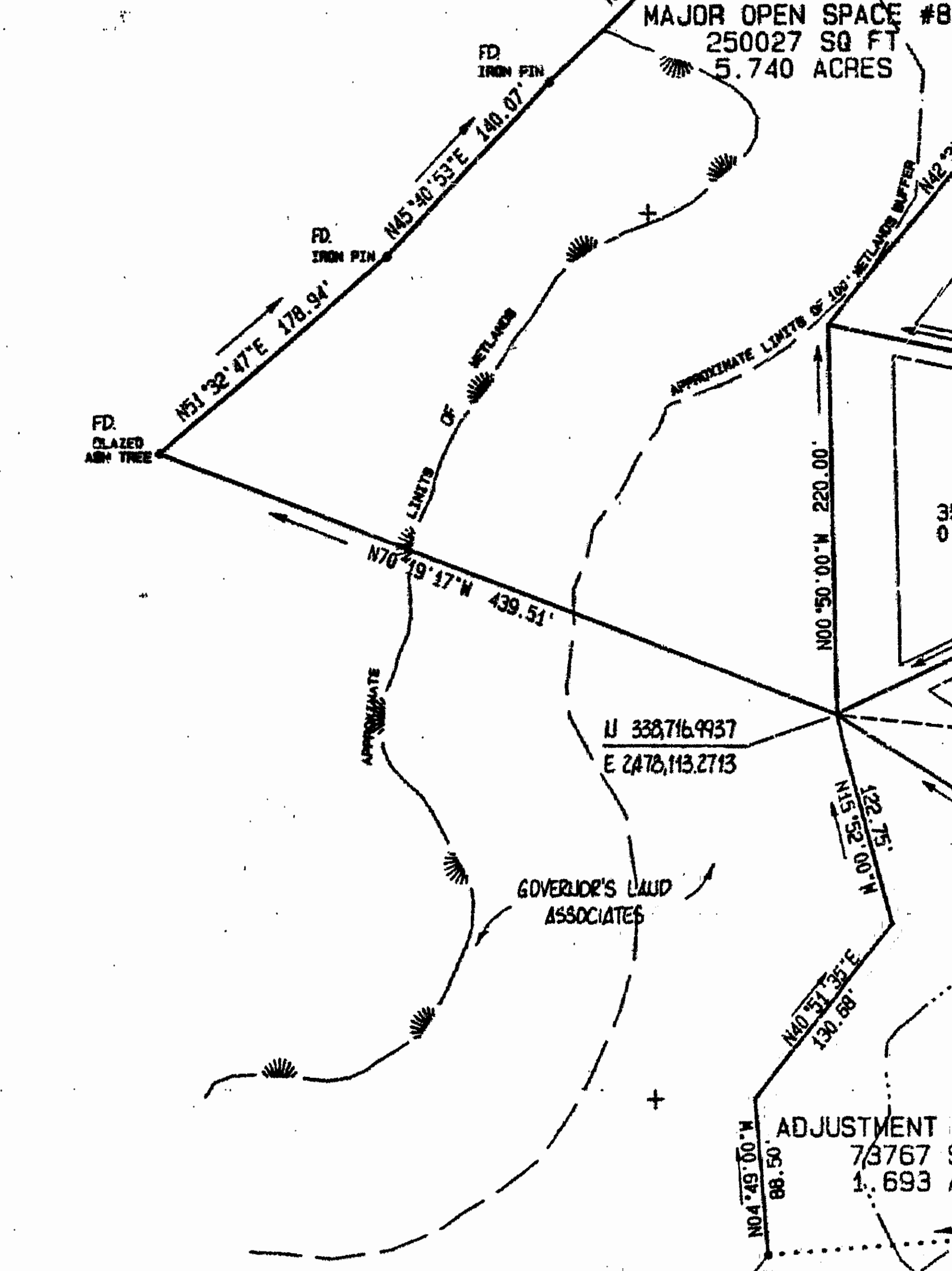


REFERENCE IS HEREBY EXPRESSLY MADE TO THE GENERAL NOTES AS THEY APPEAR ON SHEET #1 OF THIS PLAT, AND THE DECLARATION FOR THE GOVERNOR'S LAND AT TWO RIVERS FOR ADDITIONAL INFORMATION, RULES AND REGULATIONS REGARDING THIS SUBDIVISION.

RESTRICTIONS IN AREAS OF MAJOR OPEN SPACE THOSE AREAS SHOWN AND DENOTED AS "MAJOR OPEN SPACE" SHALL BE UNDISTURBED AND EXCLUSIVE OF ANY LOTS, EXCEPT FOR GOLF FAIRWAYS, UTILITIES, DRAINAGE IMPROVEMENTS, ROADS AS SHOWN GENERALLY ON THE MASTER PLAN FOR GOVERNOR'S LAND, JOGGING, NATURE, OR GOLF TRAILS OR BRIDGES, AND SIGNAGE APPROVED BY THE PLANNING COMMISSION.

NOTE: UNIMPROVED PRIVATE R/W TO BE UTILIZED AS A COMMON ACCESS EASEMENT TO LOTS 15 & 16, AND AS A DRAINAGE AND UTILITY EASEMENT. THE DEVELOPER RESERVES THE RIGHT TO EXTEND AND IMPROVE THIS PORTION OF THE PRIVATE R/W AT ANY TIME, AND POSSIBLY DEDICATE THE R/W TO VDOT.

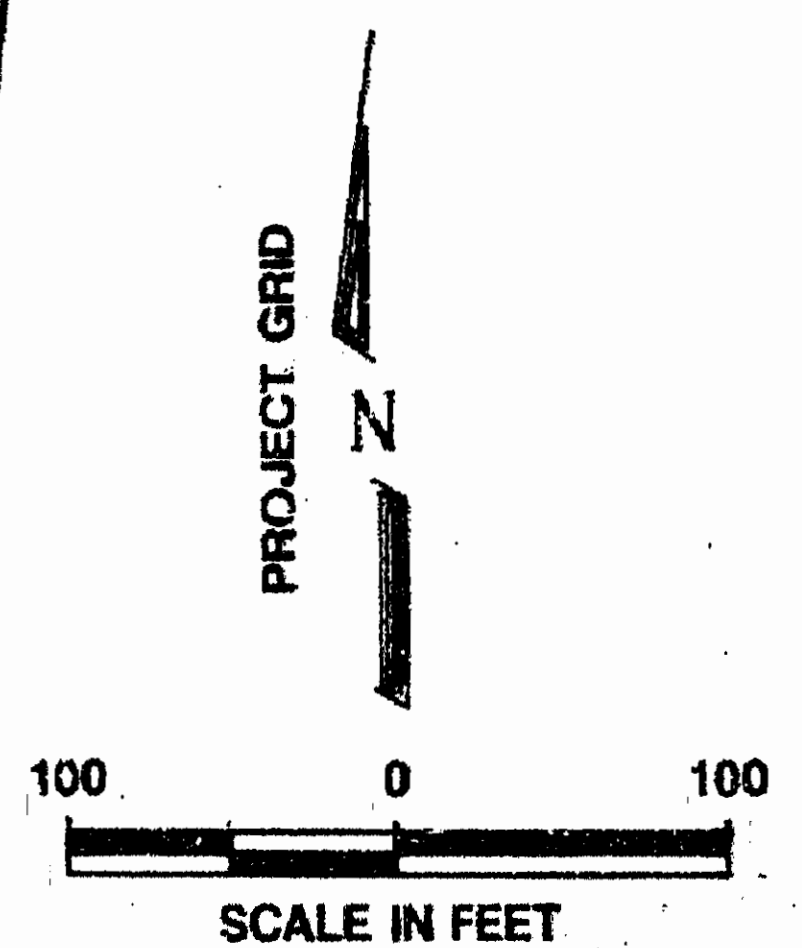


**LOT CURVE DATA TABLE**

CURVE	DELTA	RADIUS	ARC	TANGENT	CHORD	CHORD BEARING
L1	29°08'13"	325.00'	131.24'	86.53'	130.36'	S04°56'49"E
L2	07°09'42"	325.00'	40.06'	26.05'	40.03'	N13°08'08"W
L3	30°38'00"	235.00'	158.46'	92.37'	153.47'	N02°38'00"W
L4	07°24'47"	525.00'	87.90'	34.00'	87.89'	N28°41'18"W
L5	87°40'18"	25.00'	30.25'	24.00'	34.83'	N76°13'45"W
L6	30°59'47"	175.00'	119.11'	61.96'	116.82'	S79°28'59"W
L7	09°04'49"	875.00'	138.67'	69.48'	138.53'	S76°31'43"E
L8	01°20'46"	875.00'	20.56'	10.28'	20.58'	S71°18'56"E
L9	00°27'36"	875.00'	7.03'	3.51'	7.03'	N70°24'44"W
L10	20°26'52"	175.00'	62.45'	31.56'	62.12'	N59°57'30"W
L11	14°40'07"	175.00'	44.80'	22.32'	44.58'	S42°24'00"E
L12	06°39'39"	175.00'	20.34'	10.18'	20.33'	S31°14'07"E
L13	28°08'17"	175.00'	85.94'	43.86'	85.08'	N14°20'09"W
L14	96°59'40"	25.00'	42.32'	28.25'	37.45'	N48°45'30"W
L15	30°21'12"	76.50'	40.53'	20.75'	40.05'	S82°05'04"E
L16	41°35'27"	76.50'	55.53'	29.05'	54.32'	S46°06'44"E
L17	48°26'39"	76.50'	64.68'	34.42'	62.77'	S01°05'41"E
L18	40°14'08"	76.50'	53.72'	28.02'	52.62'	S43°14'43"W
L19	44°33'20"	76.50'	59.49'	31.34'	58.00'	S85°38'27"W
L20	21°14'20"	76.50'	28.36'	14.34'	28.20'	N61°27'43"W
L21	23°28'29"	273.02'	111.86'	56.73'	111.08'	N62°34'47"W
L22	15°56'58"	273.02'	76.00'	38.25'	75.76'	N82°17'31"W
L23	09°56'26"	475.00'	82.41'	41.31'	82.31'	N65°17'47"W
L24	11°58'55"	475.00'	98.33'	49.85'	99.15'	N74°20'07"W
L25	78°40'21"	25.00'	34.33'	20.48'	31.69'	S72°19'10"W
L26	37°21'37"	285.00'	165.84'	96.36'	162.56'	S69°41'23"W
L27	48°18'39"	235.00'	198.15'	105.39'	192.33'	N64°45'25"E
L28	07°37'06"	235.00'	31.25'	15.65'	31.22'	N36°47'33"E
L29	90°51'07"	25.00'	39.64'	25.37'	35.62'	N12°26'34"W
L30	11°13'50"	575.00'	112.71'	56.53'	112.53'	N62°15'12"W
L31	13°32'17"	575.00'	135.86'	68.25'	135.56'	N39°52'09"W
L32	02°12'15"	285.00'	10.96'	5.48'	10.96'	S34°05'55"W
L33	15°49'20"	285.00'	78.70'	39.60'	79.45'	S43°05'55"W
L34	03°04'59"	525.00'	27.79'	13.90'	27.79'	N23°28'00"W

**RIGHT-OF-WAY CURVE DATA TABLE**

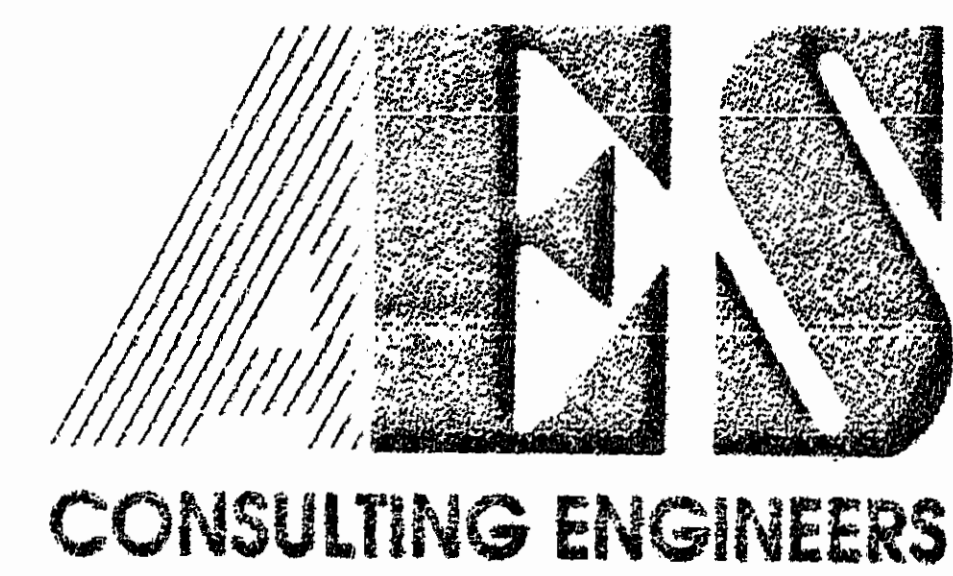
CURVE	DELTA	RADIUS	ARC	TANGENT	CHORD	CHORD BEARING
C1	02°34'07"	2147.47'	96.27'	48.14'	96.27'	S62°54'54"W
C2	30°11'55"	325.00'	171.30'	87.69'	169.32'	S01°35'02"W
C3	41°13'00"	525.00'	377.67'	197.42'	369.58'	S42°33'30"E
C4	27°08'00"	425.00'	201.02'	102.43'	199.15'	S76°43'00"E
C5	226°25'07"	76.50'	302.31'	140.62'	140.62'	S15°56'54"W
C6	39°25'27"	273.02'	187.86'	97.82'	184.18'	N70°33'16"W
C7	27°06'00"	475.00'	224.67'	114.48'	222.58'	N76°43'00"W
C8	41°13'00"	575.00'	413.64'	216.22'	404.77'	N42°33'30"W
C9	38°38'00"	285.00'	192.17'	96.90'	188.95'	N02°38'00"W
C10	24°33'09"	275.00'	117.84'	58.94'	115.94'	S04°24'25"W
C11	107°55'53"	25.00'	47.09'	34.37'	40.43'	S81°50'06"E
C12	97°10'51"	25.00'	42.40'	28.35'	37.50'	N48°19'25"E
C13	19°55'09"	425.00'	147.75'	74.63'	147.01'	S73°07'35"E
C14	19°03'09"	525.00'	174.50'	88.10'	173.78'	S53°38'25"E
C15	112°24'40"	25.00'	49.05'	37.35'	41.55'	S12°05'29"W
C16	30°38'03"	125.00'	66.83'	34.24'	66.04'	S83°36'51"W
C17	10°53'12"	825.00'	156.76'	78.61'	156.52'	N75°37'31"W
C18	69°54'56"	125.00'	152.53'	87.39'	143.24'	N35°13'28"W
C19	10°53'12"	875.00'	166.26'	83.36'	166.01'	S75°37'31"E
C20	69°54'56"	175.00'	213.54'	122.34'	200.54'	S35°13'28"W
C21	07°10'51"	425.00'	53.26'	39.77'	53.23'	N86°40'35"W
C22	11°43'15"	525.00'	107.40'	53.89'	107.21'	N36°15'13"W
C23	55°23'12"	285.00'	275.50'	149.59'	264.90'	N60°40'36"E
C24	55°23'12"	235.00'	229.39'	124.77'	220.39'	S20°56'52"W
C25	05°17'59"	575.00'	53.17'	26.60'	53.15'	N80°31'04"W
C26	05°10'39"	475.00'	42.92'	21.48'	42.91'	N65°45'20"W



NOTE: Hatched area DENOTES VIRGINIA DEPARTMENT OF TRANSPORTATION EASEMENT (THIS SHEET ONLY)

NOTE REGARDING SETBACKS  
UNLESS OTHERWISE NOTED, BUILDING SETBACKS FOR THE LOTS SHOWN ARE AS FOLLOWS:  
FRONT: 50'  
SIDE: 10'  
REAR: 40'

11:56 AM  
30th November 1999  
B. M. 592, pages 525  
Release & Mark Clerk



2548 Olde Towne Road, Suite 1  
Williamsburg, Virginia 23188  
(804) 253-0040  
Fax (804) 220-8994

PLAT OF  
**FOWLERS LAKE**  
THE  
**GOVERNOR'S LAND**  
At Two Rivers  
JAMES CITY COUNTY  
VIRGINIA



No.	DATE	REVISION / COMMENT / NOTE	BY

Designed VMB	Drawn BJU
Scale 1"=100'	Date SEPT. 1999
Project No. 7173	
Drawing No. 3 of 3	