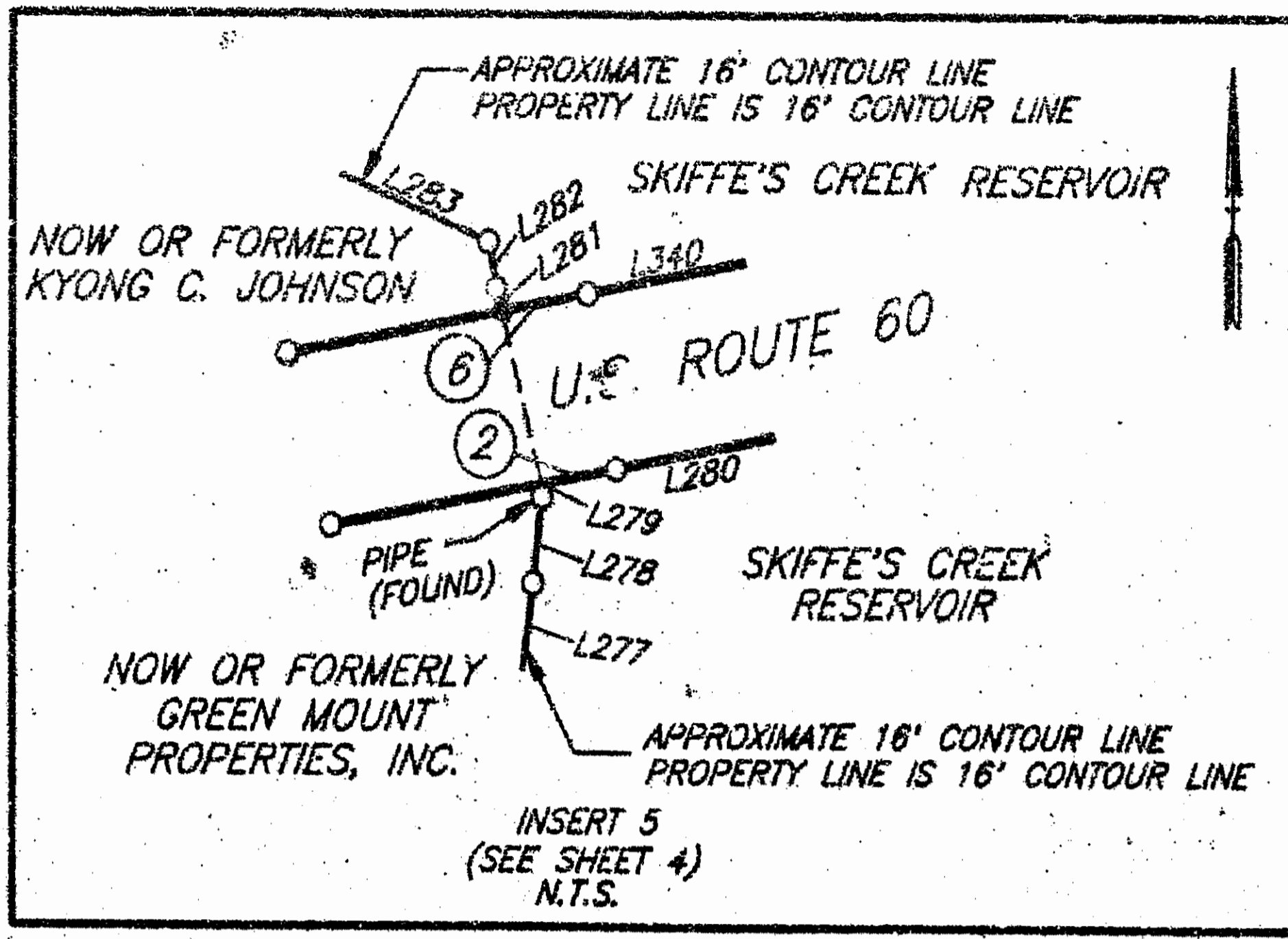
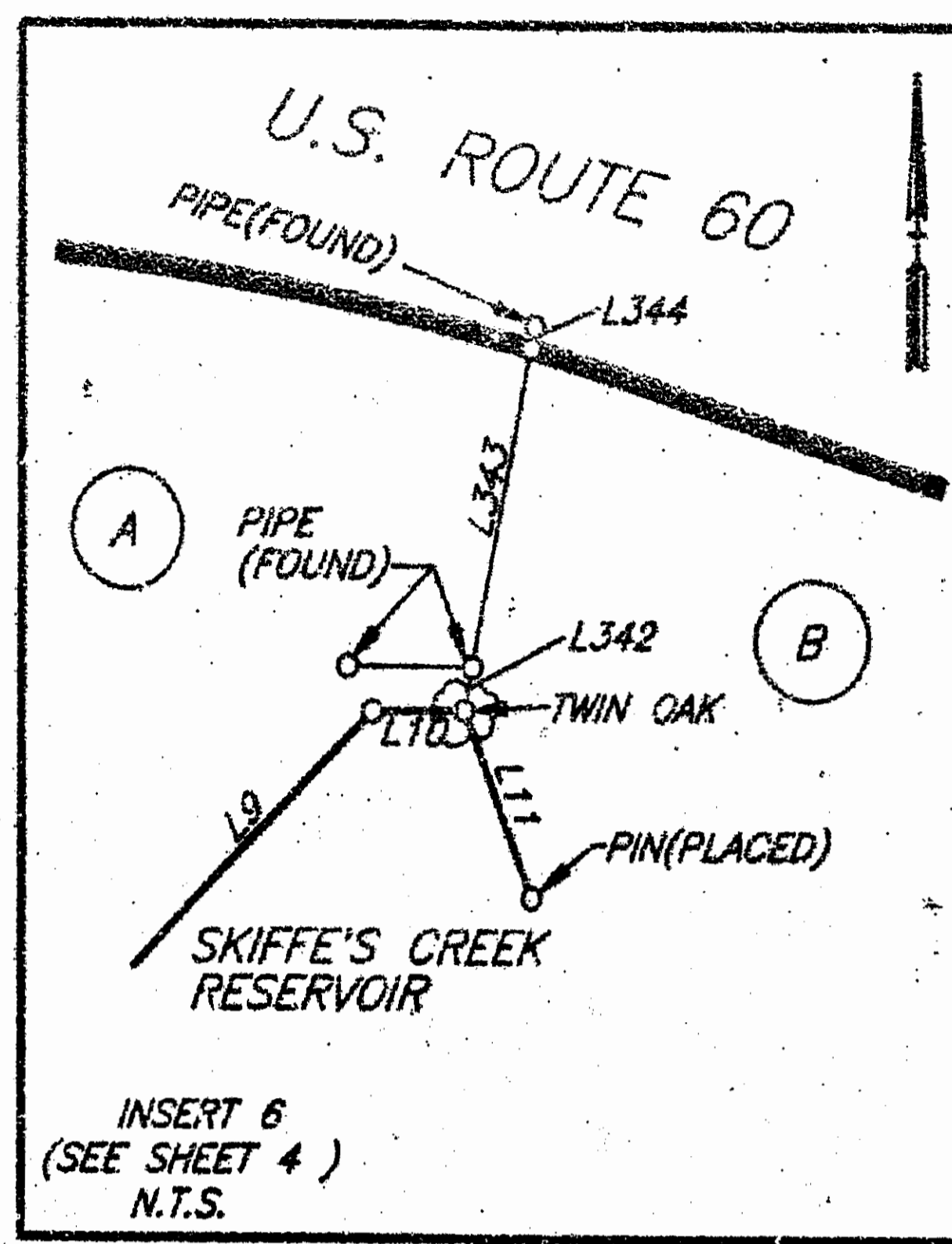


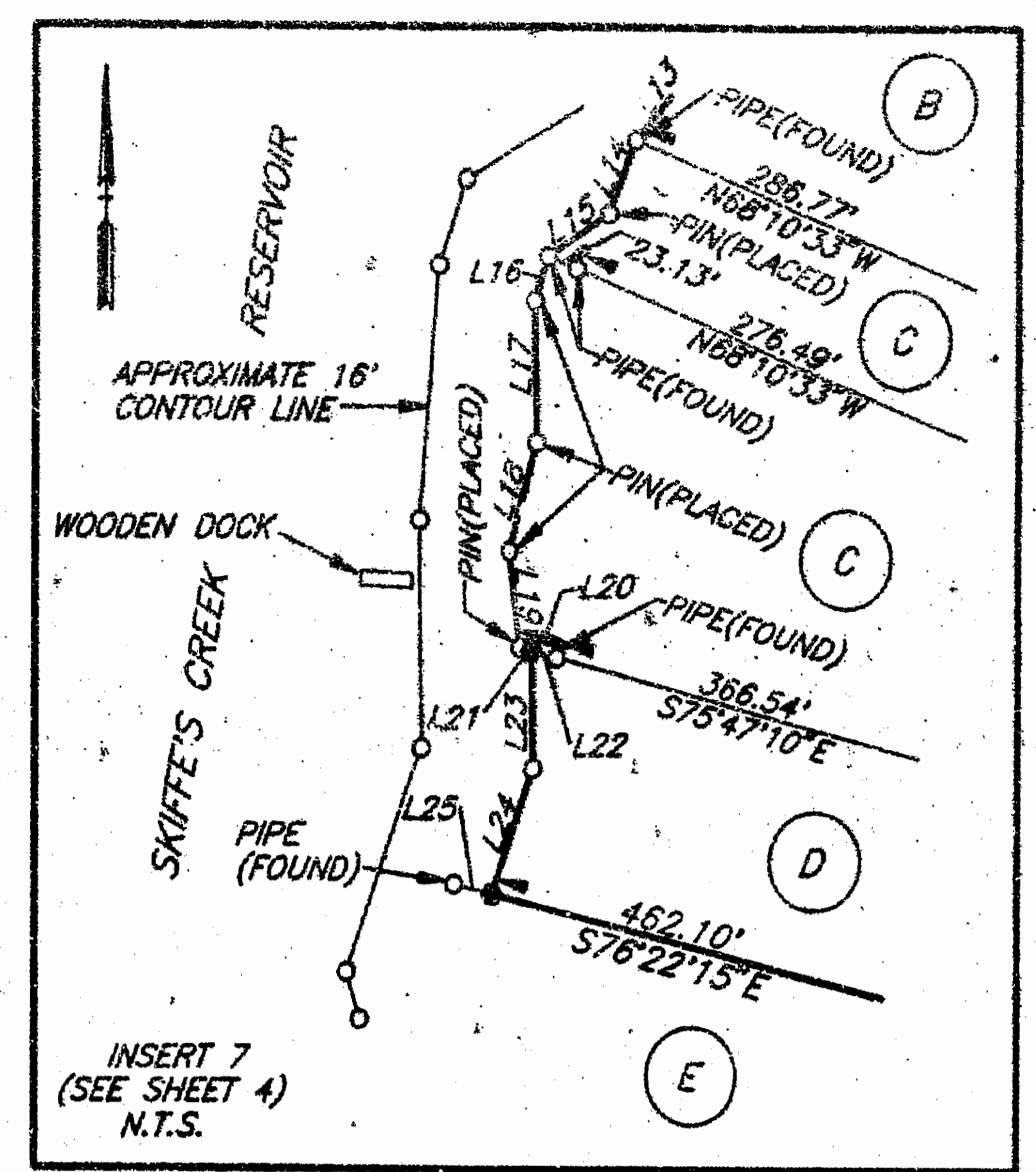
INSERT 4
(SEE SHEET 4)
N.T.S.



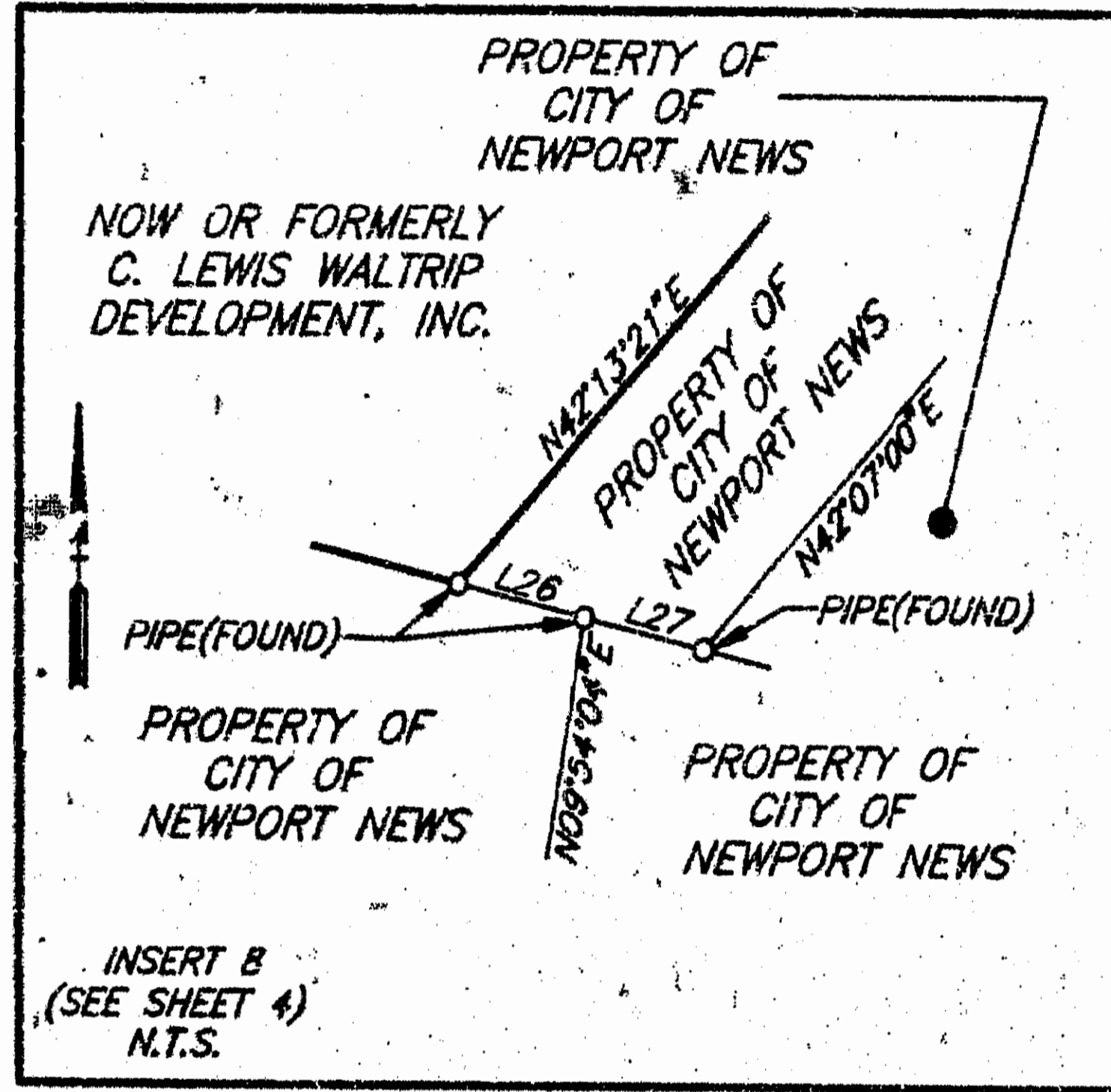
INSERT 5
(SEE SHEET 4)
N.T.S.



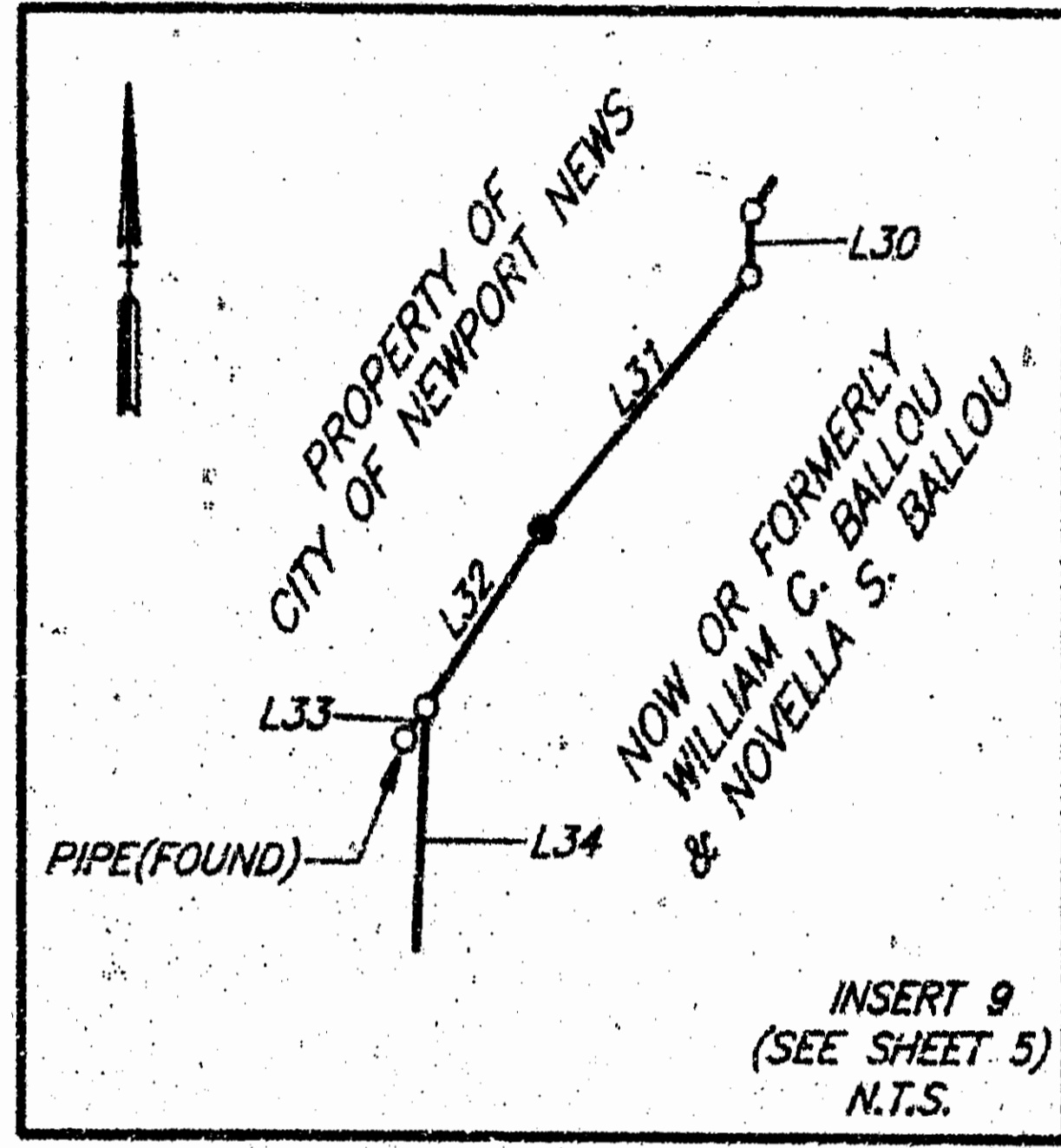
INSERT 6
(SEE SHEET 4)
N.T.S.



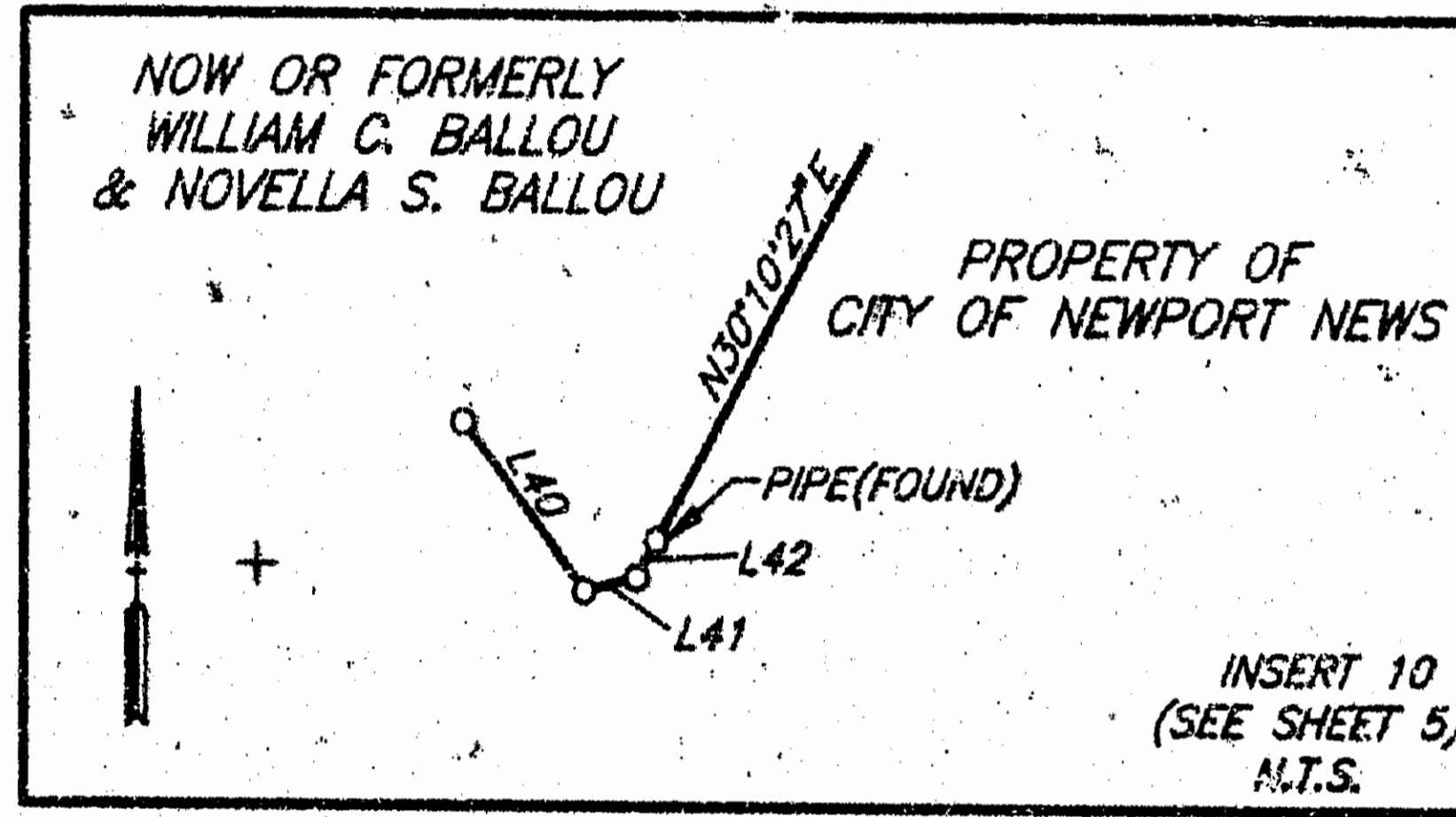
INSERT 7
(SEE SHEET 4)
N.T.S.



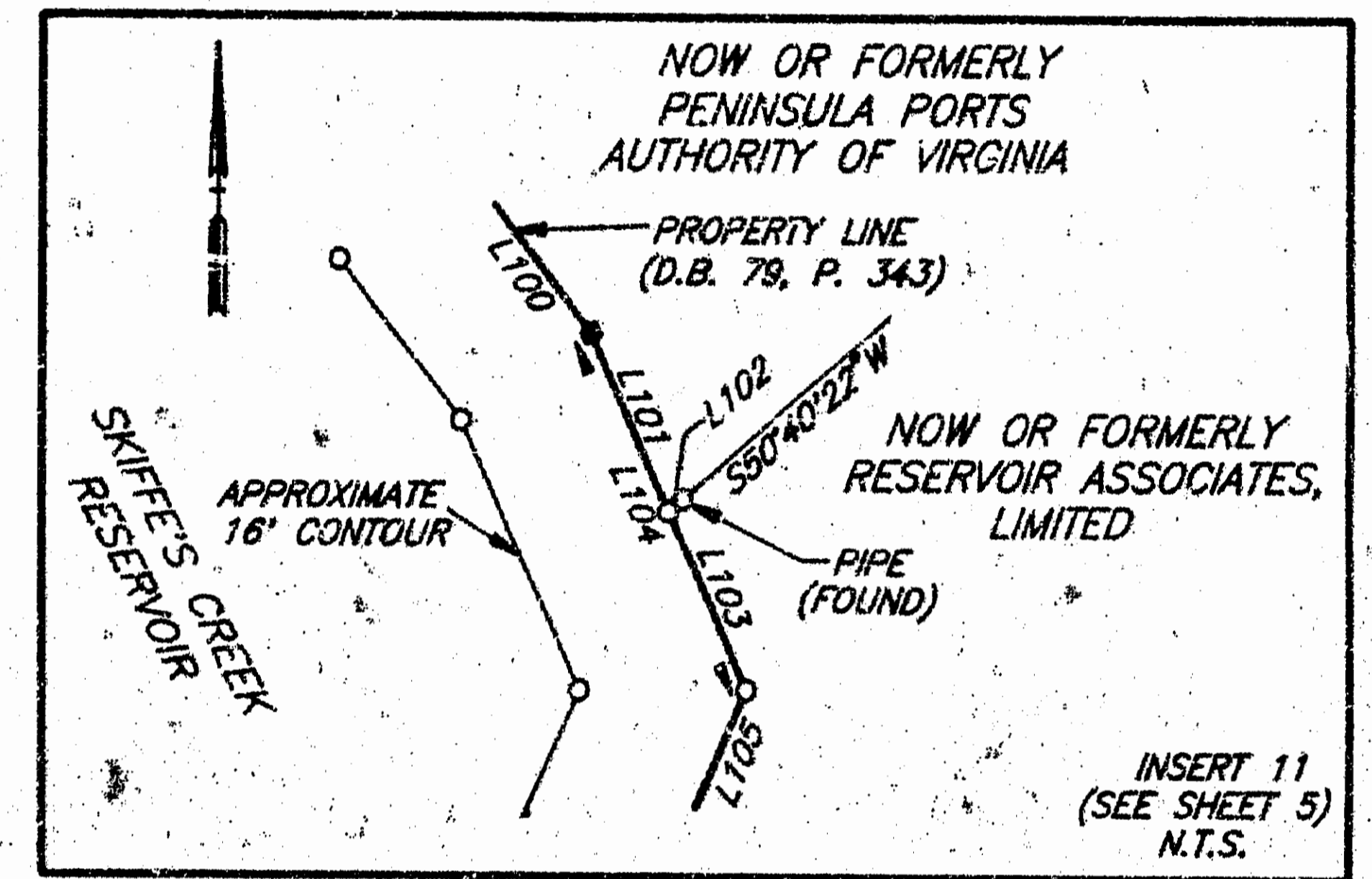
INSERT 8
(SEE SHEET 4)
N.T.S.



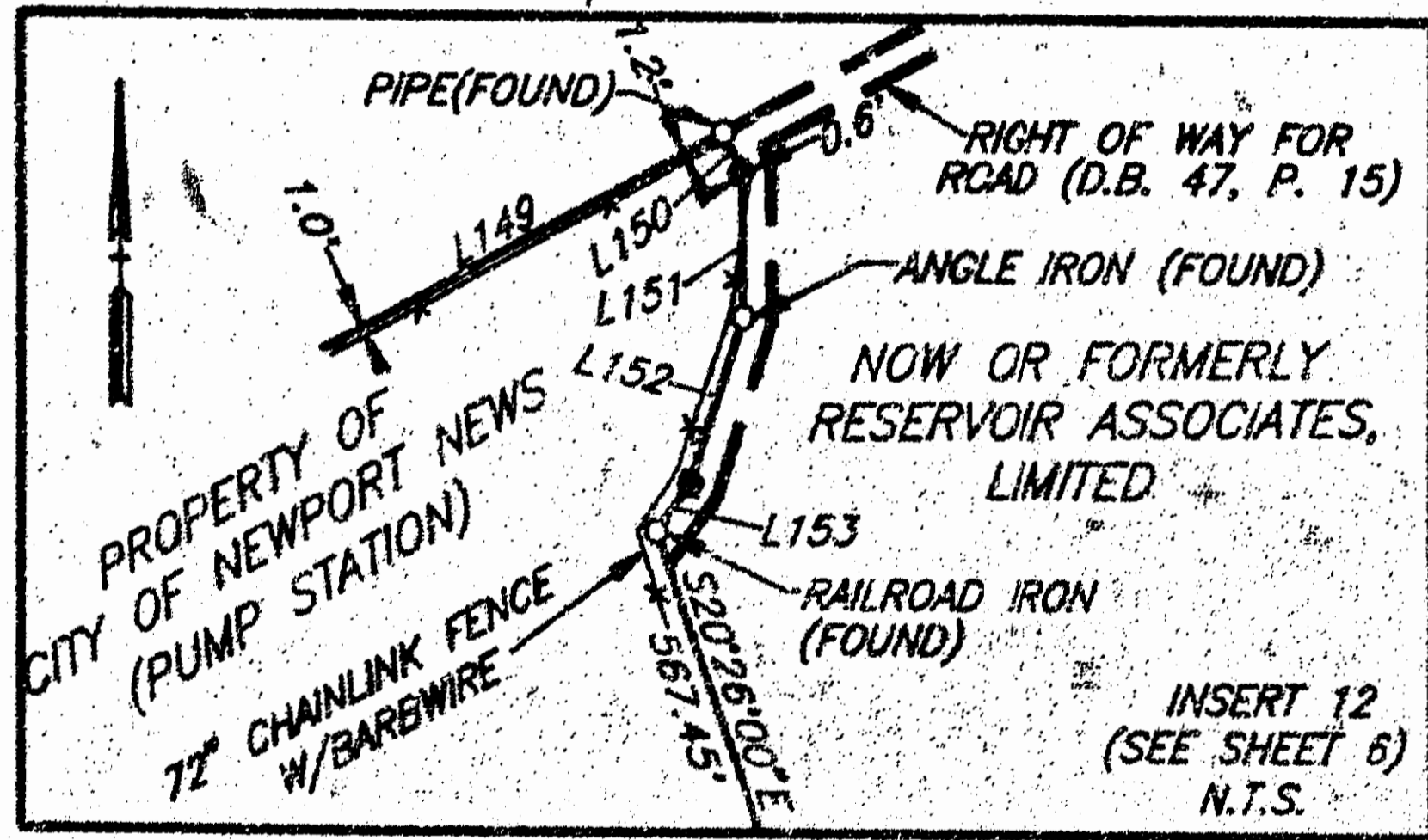
INSERT 9
(SEE SHEET 5)
N.T.S.



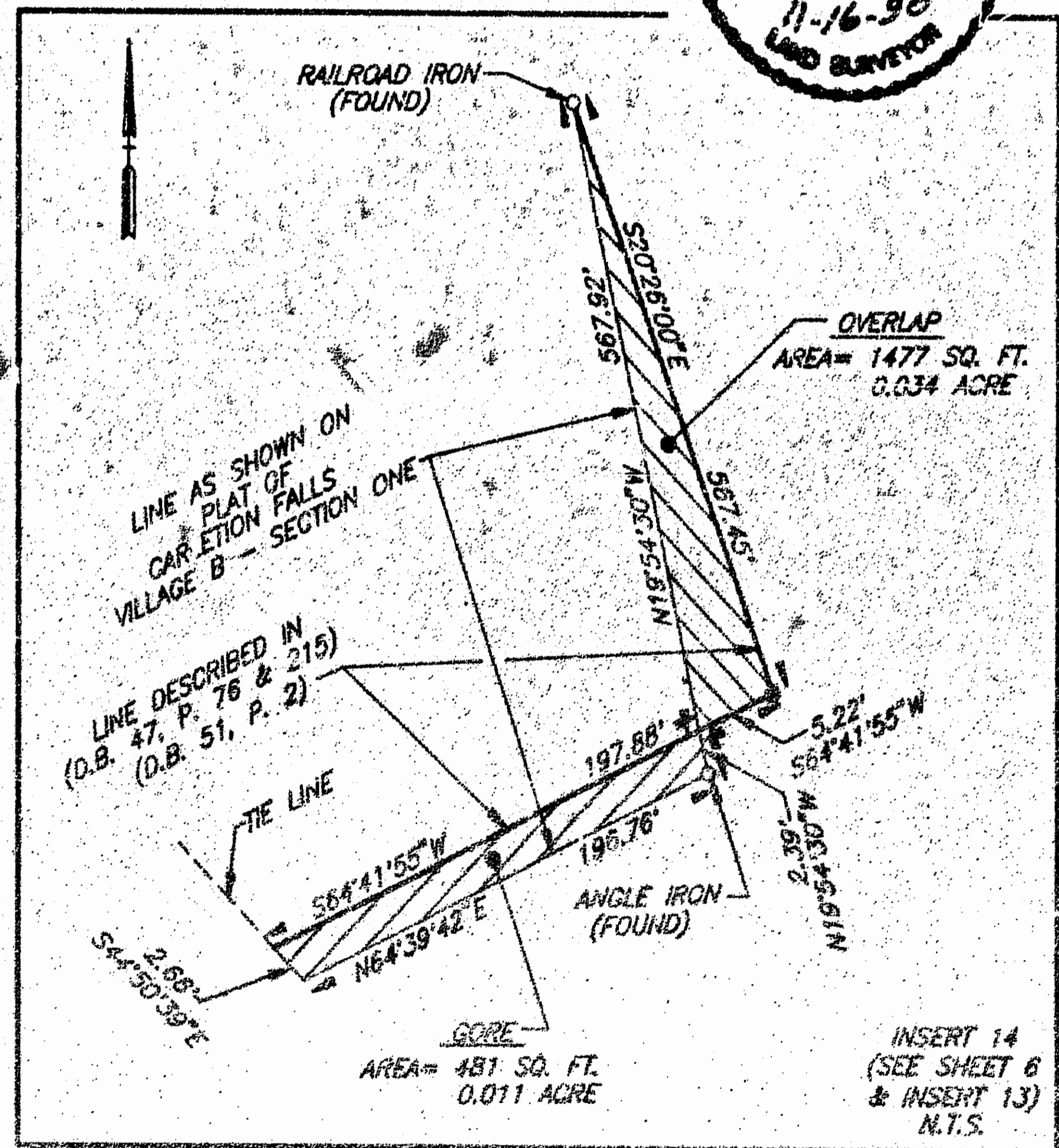
INSERT 10
(SEE SHEET 5)
N.T.S.



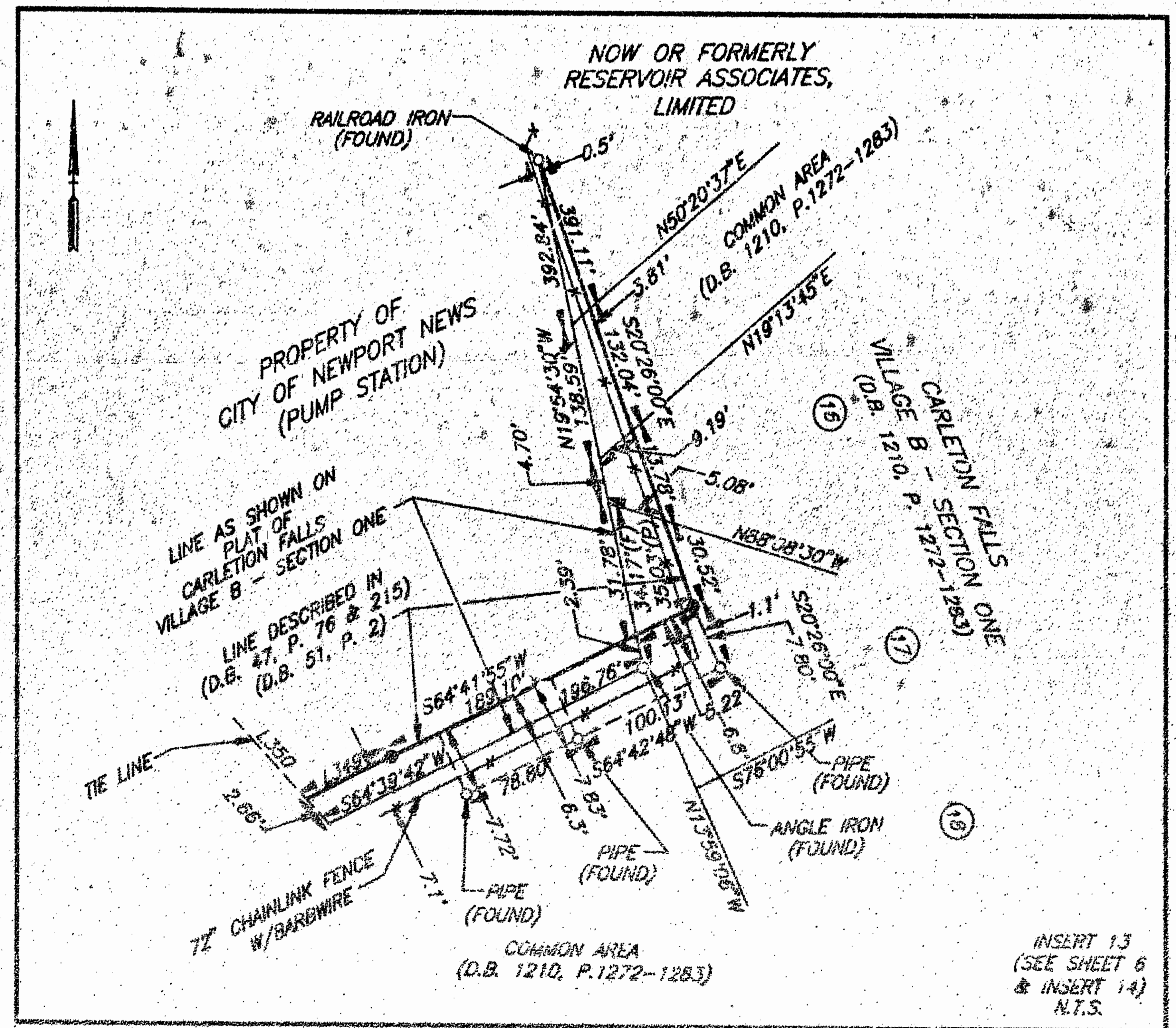
INSERT 11
(SEE SHEET 5)
N.T.S.



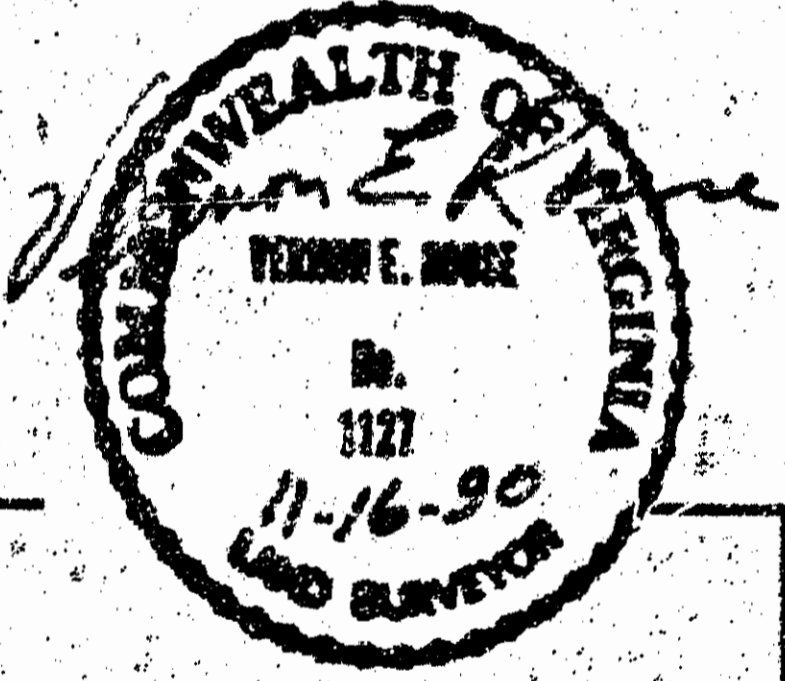
INSERT 12
(SEE SHEET 6)
N.T.S.



INSERT 14
(SEE SHEET 6 & INSERT 13)
N.T.S.



INSERT 13
(SEE SHEET 6 & INSERT 14)
N.T.S.



NOVEMBER 22, 1989
SEE SHEET 1 FOR NOTES

VIRGINIA: CITY OF NEWPORT NEWS
IN THE CLERK'S OFFICE OF THE CIRCUIT COURT FOR THE CITY OF NEWPORT NEWS, THE _____ DAY OF _____, 1990, THIS PLAT WAS PRESENTED AND ADMITTED TO RECORD AS THE LAW DIRECTS IN PLAT BOOK _____ AT PAGE _____

TESTE: _____ CLERK

CERTIFICATE OF RECORDATION

IN THE CLERK'S OFFICE OF THE CIRCUIT COURT OF JAMES CITY COUNTY, VIRGINIA, ON THE _____ DAY OF _____, 1990, THIS PLAT WAS RECEIVED AND ADMITTED TO RECORD IN PLAT BOOK _____ PAGE _____

TESTE: _____ CLERK