

DETAIL "C"  
N.T.S.

DETAIL "B"  
N.T.S.

DETAIL "A"  
N.T.S.

CARRIAGE ROAD 50' R/W

N/F MONTCASTLE LUMBER CO.

GINELLA HOLMES  
D.B. 148, PG. 511

MABLE HOBDAY  
D.B. 148, PG. 344

N/F C.R. JACKSON

N/F FRED D. MOORE

N/F BRENDA L. WILLIAMS

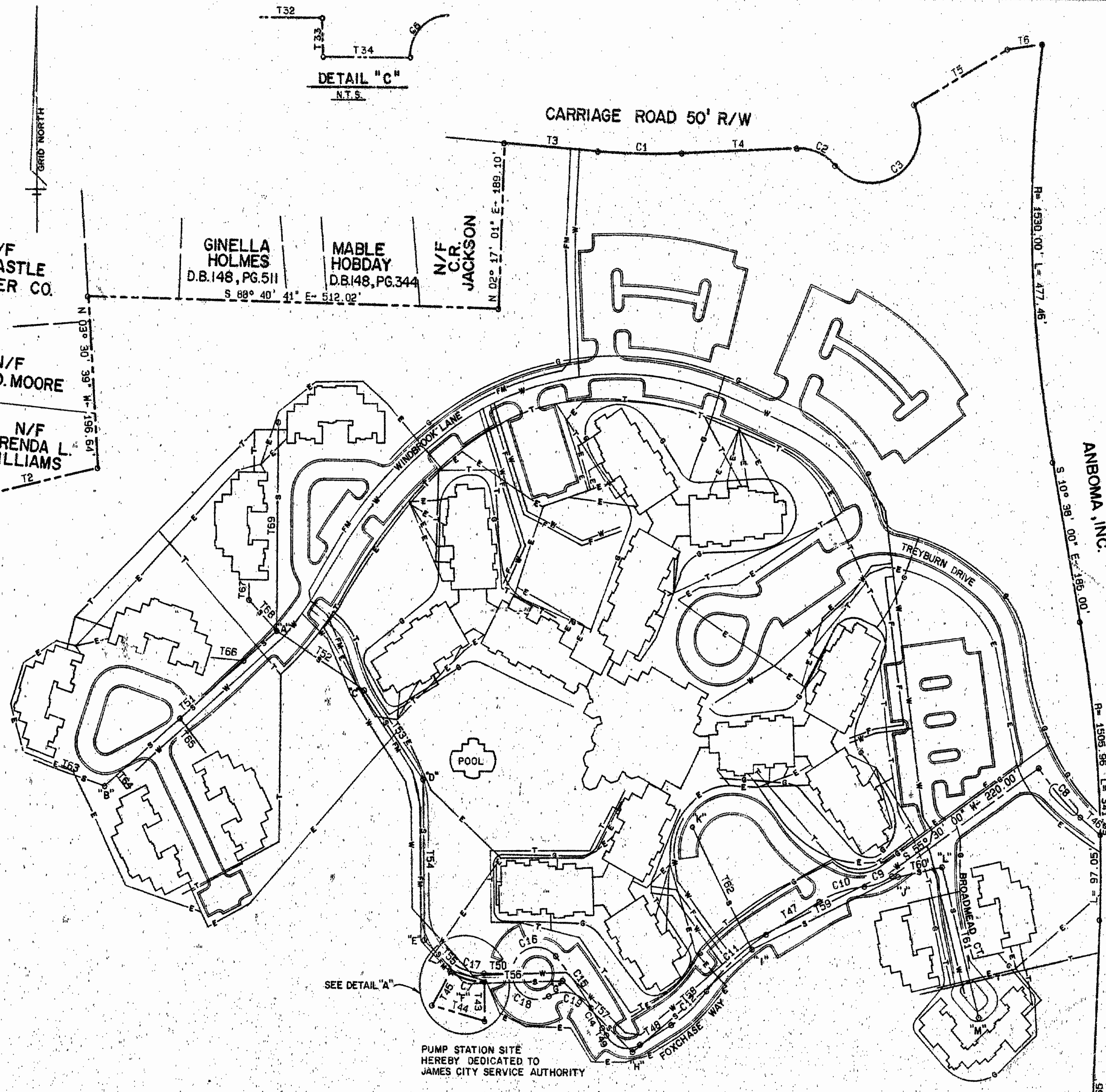
N/F CLAUDE R. NELSON

DOROTHY TAYLOR  
D.B. 139, PG. 473

CHARLES CHANDLER  
D.B. 176, PG. 665

ANBOMA, INC.

FOR INGRESS-EGRESS PLAT  
SEE DB 298, PG. 315



SEE DETAIL "A"

PUMP STATION SITE  
HEREBY DEDICATED TO  
JAMES CITY SERVICE AUTHORITY

MATCHLINE SEE SHEET 1

JAMES CITY COUNTY

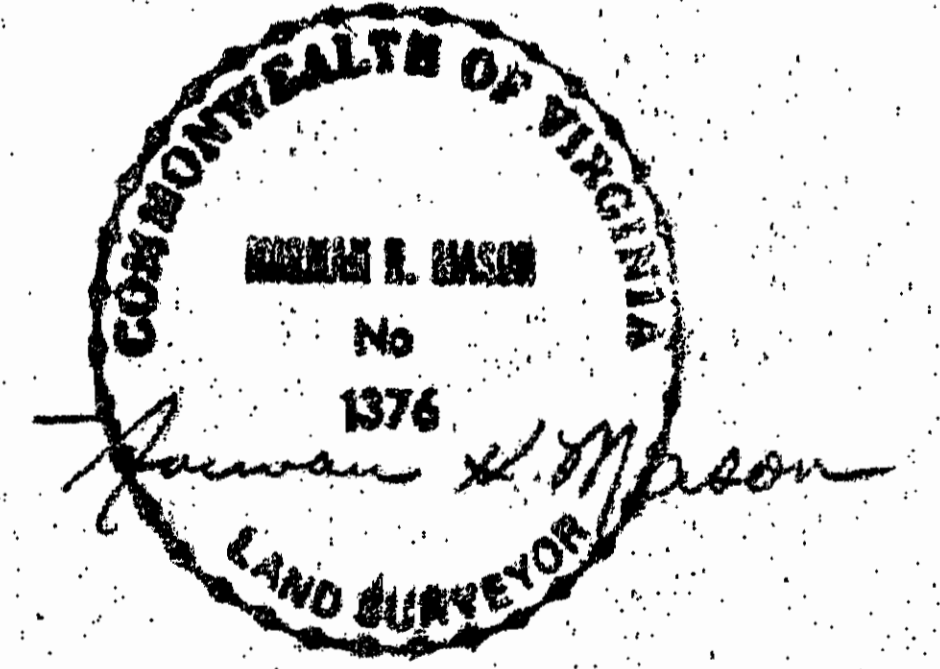
CITY OF WILLIAMSBURG

N/F COLLEGE OF WILLIAM & MARY  
"WOODLANDS" TRACT

TRAVERSE LINE (TYP)  
FOR AREA COMPUTATION ONLY.

- W- 10' WATERLINE EASEMENT HEREBY DEDICATED TO JAMES CITY SERVICE AUTHORITY (J.C.S.A.)
- F- 10' WATERLINE (FIRE) EASEMENT HEREBY DEDICATED TO J.C.S.A.
- S- 10' SANITARY SEWER EASEMENT HEREBY DEDICATED TO J.C.S.A.
- I- 20' INGRESS AND EGRESS EASEMENT HEREBY DEDICATED TO J.C.S.A.
- T- 10' C&P TELEPHONE EASEMENT
- E- VIRGINIA POWER EASEMENT
- G- VIRGINIA NATURAL GAS EASEMENT
- FM- 10' FORCE MAIN EASEMENT TO BE DEDICATED TO J.C.S.A.

MANHOLE	RIM	INV. UP	INV. DN
SANITARY MANHOLE "A"	81.90	77.40	77.36
SANITARY MANHOLE "B"	88.72	78.89	78.75
SANITARY MANHOLE "C"	86.70	76.65	75.57
SANITARY MANHOLE "D"	82.28	75.78	75.74
SANITARY MANHOLE "E"	78.01	73.58	73.52
SANITARY MANHOLE "F"	78.22	68.87	68.62
SANITARY MANHOLE "G"	77.48	69.40	69.35
SANITARY MANHOLE "H"	76.32	69.96	69.86
SANITARY MANHOLE "I"	76.25	71.01	70.94
SANITARY MANHOLE "J"	82.71	71.85	71.80
SANITARY MANHOLE "K"	76.90	71.86	71.80
SANITARY MANHOLE "L"	84.52	72.53	72.16
SANITARY MANHOLE "M"	80.26	72.89	72.82



1:07 P.M.  
Recorded 27th day of April 1992  
in  
D.B. No. 559, pages 350  
Clerk