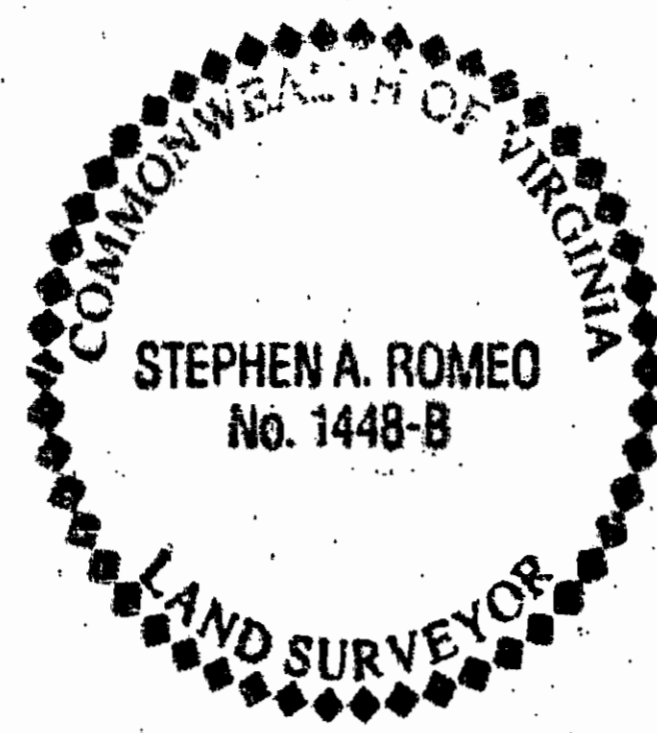


**SURVEYOR'S CERTIFICATE**

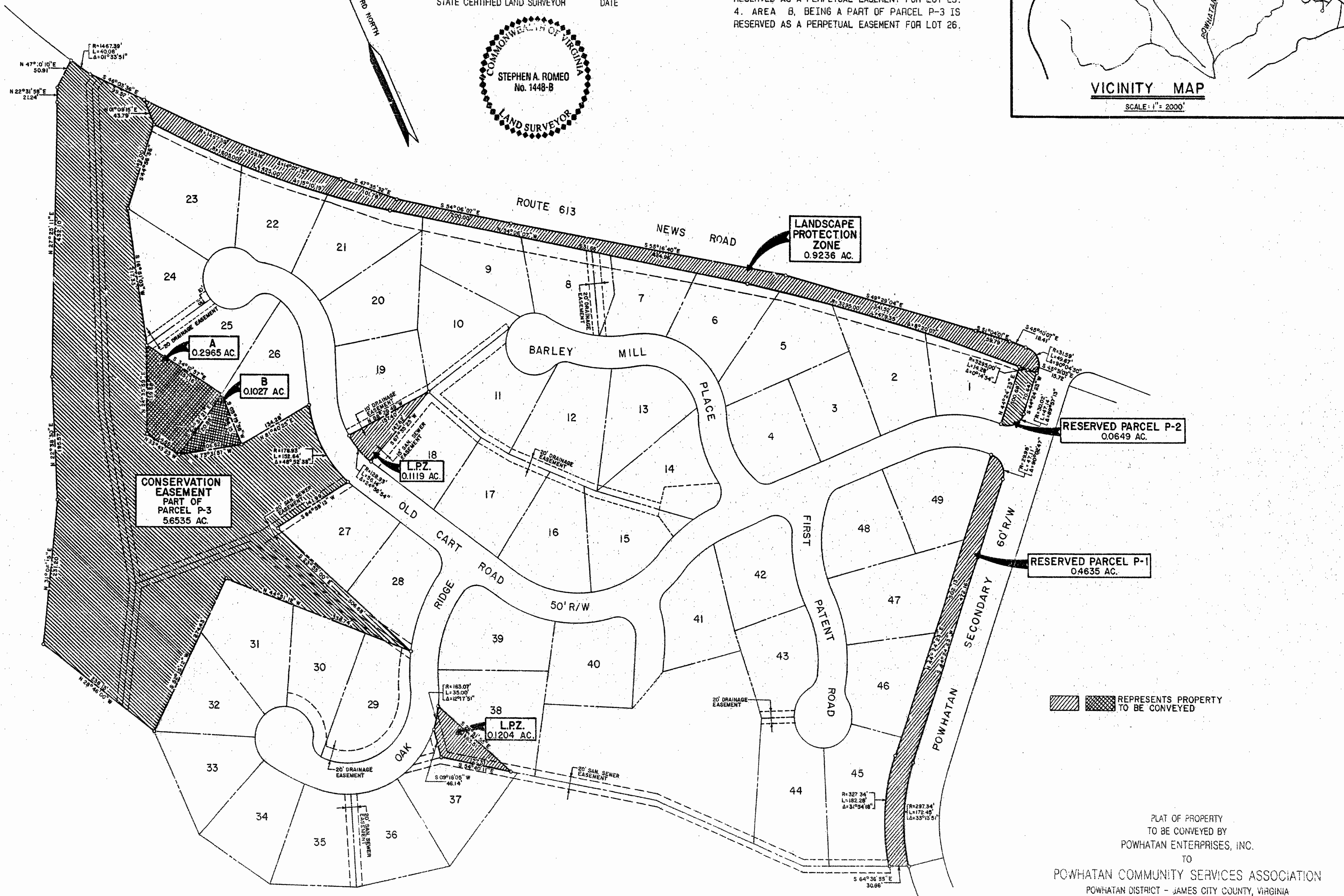
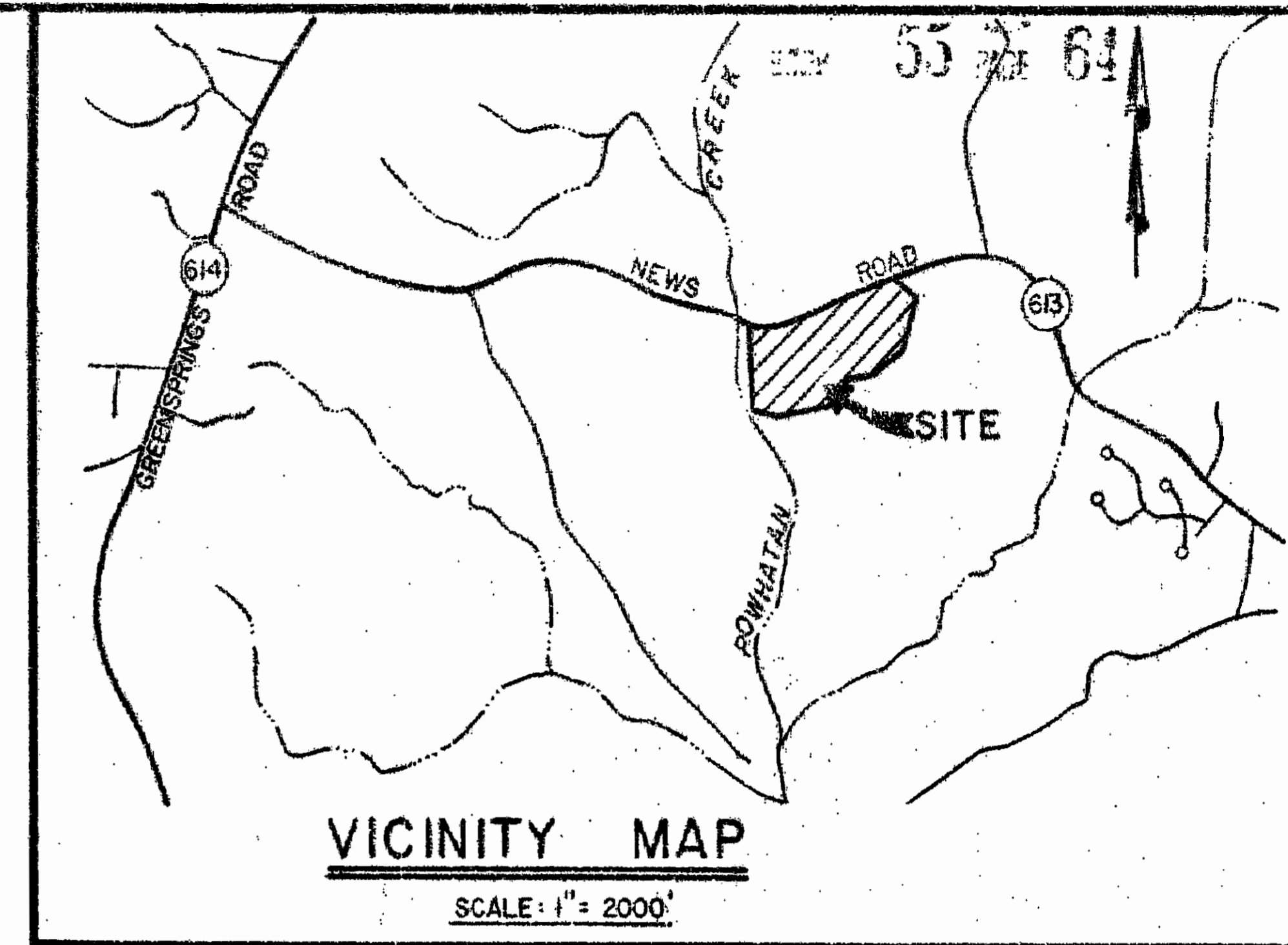
I HEREBY CERTIFY THAT TO THE BEST OF MY KNOWLEDGE AND BELIEF, THIS PLAT IS CORRECT AND COMPLIES WITH THE MINIMUM PROCEDURES AND STANDARDS ESTABLISHED BY THE VIRGINIA STATE BOARD OF ARCHITECTS, PROFESSIONAL ENGINEERS, LAND SURVEYORS AND CERTIFIED LANDSCAPE ARCHITECTS.

*Stephen Romeo* 2/2/90  
STATE CERTIFIED LAND SURVEYOR DATE



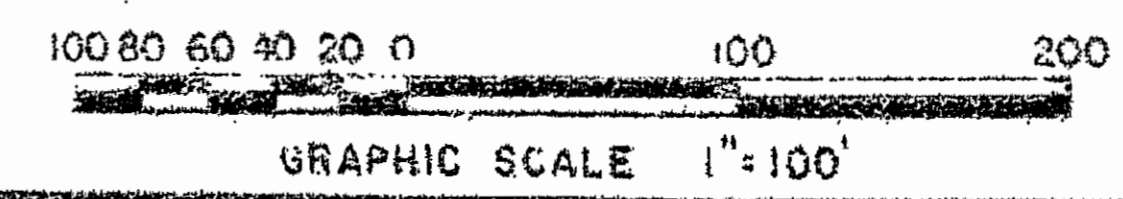
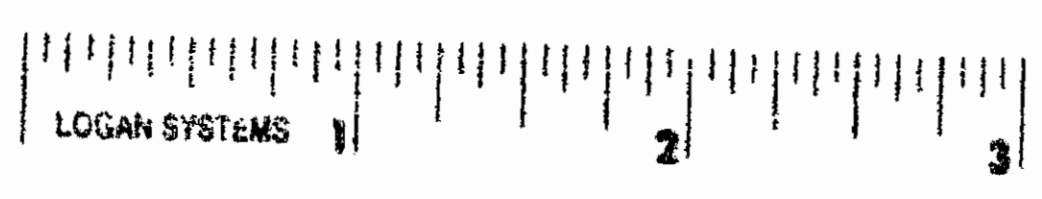
**NOTES:**

1. REFER TO PLAT OF POWHATAN OF WILLIAMSBURG PHASE I (P.B. 36, PG. 80) FOR RESERVED PARCELS AND LANDSCAPE PROTECTION ZONE (L.P.Z.).
2. REFER TO PLAT OF CONSERVATION EASEMENT (L & M INDEX 3308W) FOR CONSERVATION EASEMENT, PART OF PARCEL P-3.
3. AREA A, BEING A PART OF PARCEL P-3 IS RESERVED AS A PERPETUAL EASEMENT FOR LOT 25.
4. AREA B, BEING A PART OF PARCEL P-3 IS RESERVED AS A PERPETUAL EASEMENT FOR LOT 26.



REPRESENTS PROPERTY TO BE CONVEYED

PLAT OF PROPERTY TO BE CONVEYED BY  
POWHATAN ENTERPRISES, INC.  
TO  
POWHATAN COMMUNITY SERVICES ASSOCIATION  
POWHATAN DISTRICT - JAMES CITY COUNTY, VIRGINIA  
SCALE: 1" = 100' 7/31/90  
LANGLEY and McDONALD  
A PROFESSIONAL CORPORATION  
ENGINEERS-PLANNERS-SURVEYORS  
VIRGINIA BEACH & WILLIAMSBURG, VIRGINIA



1200  
revised 10/24  
revised April 1992  
B.B. No. 557  
W.L. McDonald